

Investing ARPA Funds in Behavioral Health Crisis Response

February 22, 2022

Stronger Counties. Stronger America.





LaTrina Foster

.....

Director, Department of
Behavioral Health, Fulton
County, Ga.



Sara Hoyle

.....

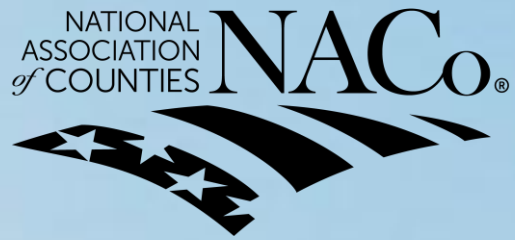
Director, Department of
Human Services, Lancaster
County, Neb.



Jewel Denne

.....

Assistant Deputy Director,
Bureau of Mental Health
Services, Allegheny County,
Pa.



AMERICAN RESCUE PLAN FISCAL RECOVERY FUND: OVERVIEW OF BEHAVIORAL HEALTHCARE ELIGIBLE USES



COVID-19 Recovery Clearinghouse (naco.org)

COVID-19 RECOVERY CLEARINGHOUSE

In a major victory for America's counties, the State and Local Coronavirus Fiscal Recovery Funds legislation, part of the American Rescue Plan Act, was signed into law by President Biden on March 11. The legislation includes \$65.1 billion in direct, flexible aid to every county in America, as well as other crucial investments in local communities.



State & Local Fiscal Recovery Funds

Find Treasury guidance, FAQs, NACo's analysis and more

LEARN MORE

Untold Stories

Join us in highlighting how counties are making incredible differences in the lives of our residents through the American Rescue Plan Act

LEARN MORE

Local Government ARPA Investment Tracker

The Local Government ARPA Investment Tracker, powered by NACo, Brookings Metro and National League of Cities provides a detailed local investment picture of American Rescue Plan Act funding

ACCESS TRACKER

COVID-19 Vaccine Distribution

Explore key considerations for counties in COVID-19 vaccine distribution

LEARN MORE

OVERVIEW OF PUBLIC HEALTH CATEGORY

BEHAVIORAL HEALTH CARE

Treasury clarifies this eligible use category covers an expansive array of services for prevention, treatment, recovery, and harm reduction for behavioral and mental health services, including:

- Behavioral health facilities and equipment
- Prevention, outpatient treatment, inpatient treatment, crisis care, diversion programs
- Enhanced behavioral health services in schools
- Services for pregnant women or infants born with neonatal abstinence syndrome
- Support for equitable access to reduce disparities in access to high-quality treatment
- Peer support groups, costs for residence in supportive housing or recovery housing, the 988 National Suicide Prevention Lifeline
- Expansion of access to evidence-based services for opioid use disorder prevention, treatment, harm reduction and recovery

OVERVIEW OF PUBLIC HEALTH CATEGORY

BEHAVIORAL HEALTH CARE- VIOLENCE PREVENTION

- Evidence-based practices like focused deterrence, street outreach, violence interrupters, and hospital-based violence intervention models
- Wraparound services such as behavioral therapy, trauma recovery, job training, education, housing and relocation services, and financial assistance
- Capacity-building efforts at community violence intervention programs
- Strategies to reduce gun violence

“Given the increased rate of violence during the pandemic, Treasury has determined that this enumerated eligible use is responsive to the impacts of the pandemic in all communities..”

OVERVIEW OF PUBLIC HEALTH CATEGORY

CAPITAL EXPENDITURES

Treasury clarifies the following are examples of capital expenditure projects for the public health response:

- Improvements or construction of:
 - COVID-19 testing sites and laboratories & equipment purchase
 - COVID-19 vaccination sites
 - Medical facilities for COVID-19 treatment and mitigation
 - Emergency operation centers/ equipment purchase
 - Adaptations to congregate living facilities
 - Mitigation measures in small businesses, nonprofits & impacted industries

QUESTIONS?

Brett Mattson

Associate Legislative Director – Justice & Public Safety

bmattson@naco.org or 202.942.4234



STRONGER COUNTIES. STRONGER AMERICA.

National Association of Counties
660 North Capitol Street, N.W. | Suite 400
Washington, D.C. 20001
202.393.6226 • www.NACo.org

fb.com/NACoDC
[@NACoTweets](https://twitter.com/NACoTweets)
youtube.com/NACoVideo
linkedin.com/company/NACoDC

NATIONAL ASSOCIATION OF COUNTIES - FULTON COUNTY FOCUS “HOW ARPA FUNDING CAN MAKE A DIFFERENCE”

BEHAVIORAL HEALTH CRISIS CENTER

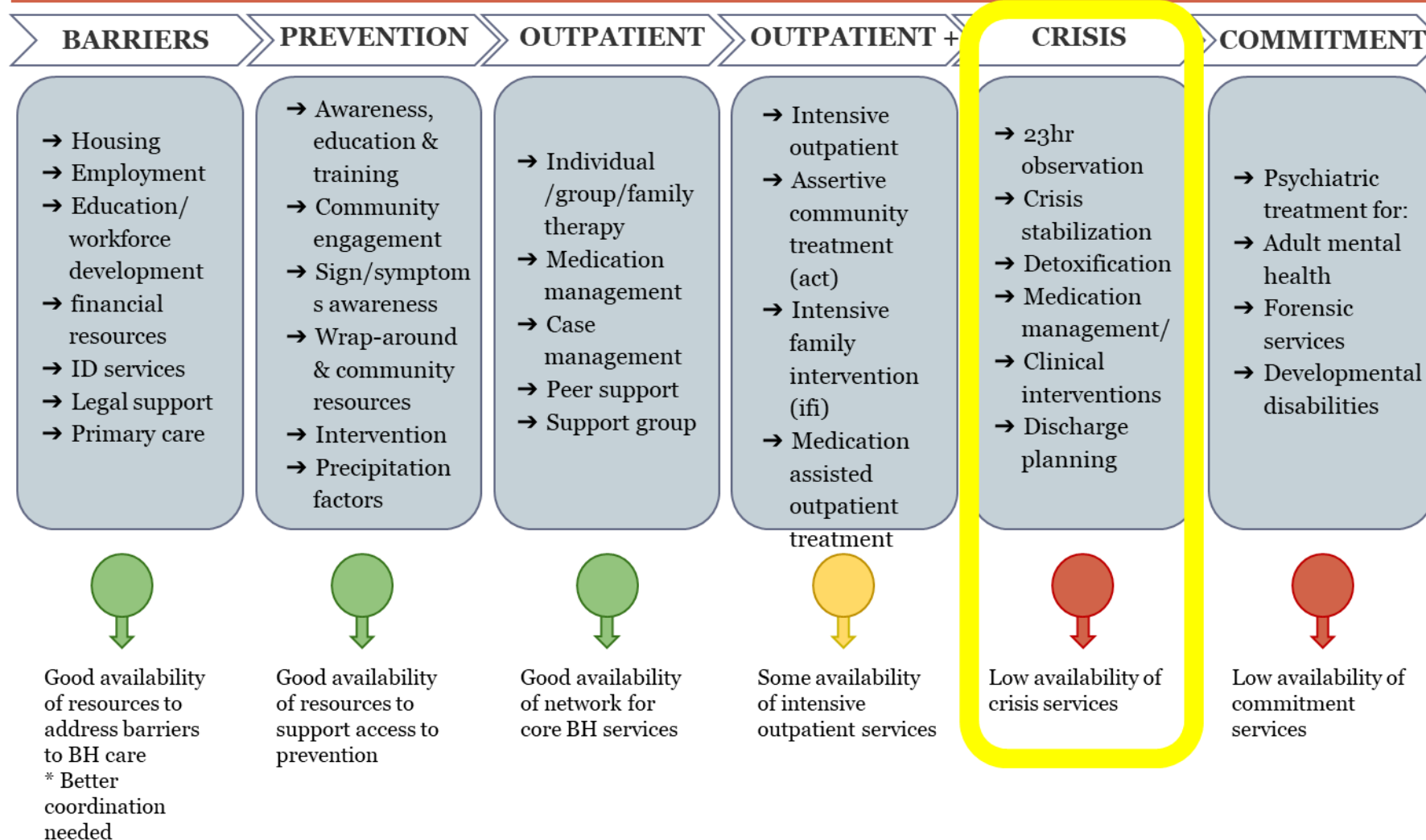


- **WHAT** problem are we trying to solve?
- **WHO** would the county target for treatment?
- **HOW** can Fulton address the needs of the target population?
- **WHERE** should we locate the Center?
- **WHEN** can it be done?



WHAT PROBLEM ARE WE TRYING TO SOLVE?

BEHAVIORAL HEALTH CONTINUUM OF CARE



WHO WOULD THE COUNTY TARGET FOR TREATMENT?

1 ADULTS & ADOLESCENTS IN MENTAL HEALTH CRISIS

Any situation in which a person's actions, feelings, and behaviors can lead to them **hurting themselves or others**, and/or put them **at risk of being unable to care for themselves or function** in the community in a healthy manner.

2 ADULTS & ADOLESCENTS WHO REQUIRE DETOXIFICATION

Medical required treatment of an alcoholic or drug addiction involving abstinence from drugs or alcohol until the bloodstream is free of toxins. Not equivalent to a sobering center.

3 ADULTS & ADOLESCENTS WHO NEED CORE BEHAVIORAL HEALTH **OUTPATIENT & WRAP AROUND SERVICES**



HOW CAN FULTON ADDRESS TARGETED NEEDS?

FULTON COUNTY BEHAVIORAL HEALTH CRISIS CENTER

CRISIS SERVICES OPERATING MODEL

GOALS	RESPONSE MODEL	ADMISSION CRITERIA
<ol style="list-style-type: none">1. Expand access to mental health/substance abuse crisis care2. Prevent suicide3. Relieve regional emergency departments	<p>Provide 24/7 access to psychiatric stabilization, detoxification, & immediate treatment for individuals experiencing a mental health &/or addiction crisis.</p> <p>Serve as a residential alternative to/or diversion from inpatient hospitalization, offering psychiatric stabilization & withdrawal management services. The program provides medically monitored residential services.</p>	<ul style="list-style-type: none">▪ Lower level treatment care was attempted/considered.▪ Individual experiencing a severe situational crisis.▪ Individual presents a substantial risk of harm.▪ Individual has insufficient resources or skills cope.▪ Individual meets diagnostic criteria for substance use, and can be expected to respond to withdrawal management treatment.



WHERE SHOULD WE LOCATE THE CRISIS CENTER?

2 Alternatives for a 50,000 Sq. Ft Facility

NEW CONSTRUCTION ESTIMATE

\$350 PER SQ. FT.	\$17,500,000
Design Services @ 10%	\$1,750,000
FFE @14%	\$2,450,000
Contingency @14%	\$2,450,000
TOTAL	\$24,150,000

OR

RENOVATION ESTIMATE

\$150 PER SQ. FT.	\$7,500,000
Design Services @ 10%	\$750,000
FFE @14%	\$1,050,000
Contingency @25%	\$1,875,000
TOTAL	\$11,175,000

RECOMMENDATION

RENOVATE OAK HILL CHILD & ADOLESCENT FAMILY CENTER



PROS

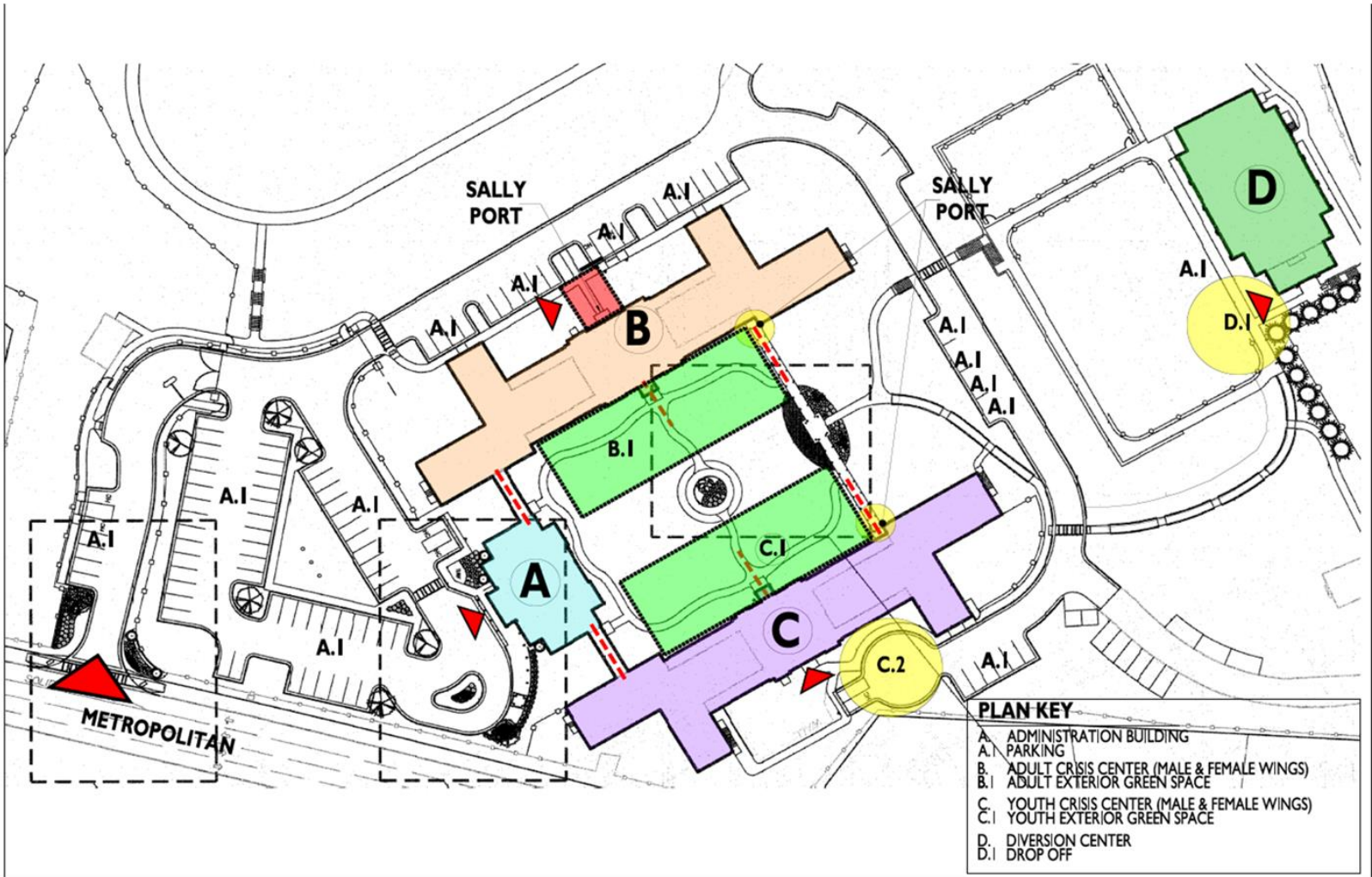
- Expedited delivery time:
Approx. 48K sq. ft. owned property in good condition
- Renovate v. build
- Originally designed for BH
- Space for diversion and all other program needs

CONS

- Need to shuffle Board Of Health services
- Realignment of Community programs
- Temporarily relocate Behavioral Health Outpatient services



CONCEPTUALS: MASTER PLAN



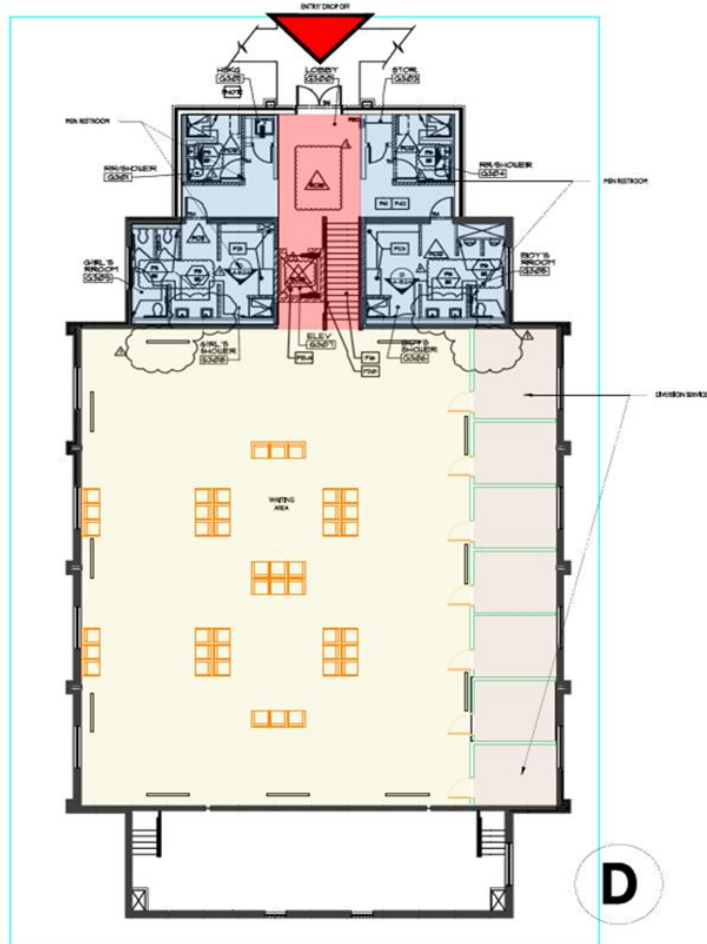
**FULTON
COUNTY**

CONCEPTUALS: ADULT CRISIS CARE

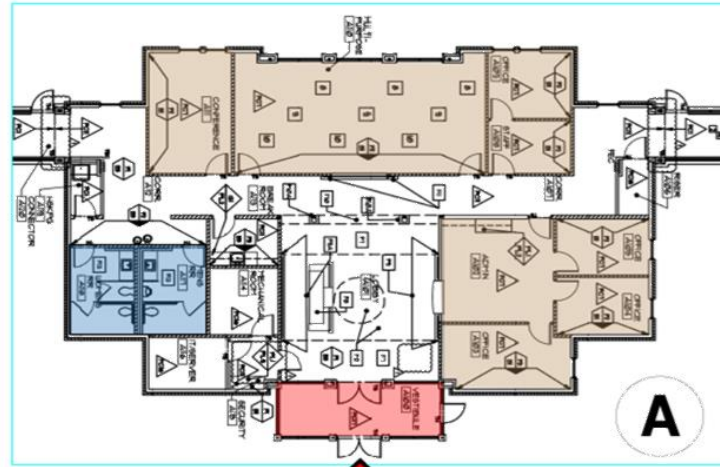


FULTON
COUNTY

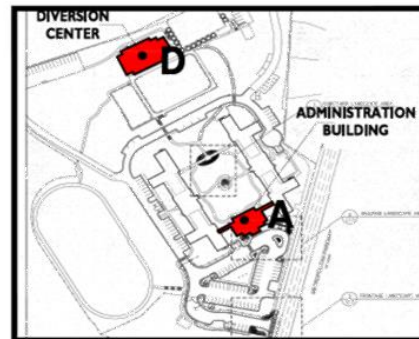
CONCEPTUALS: ADMINISTRATION



DIVERSION CENTER
SCALE: $\frac{1}{8}" = 1'-0"$



ADMINISTRATION BUILDING
SCALE: $\frac{1}{8}" = 1'-0"$



SITE PLAN



Lancaster County Investment in Behavioral Health Services with ARPA Funding



SARA HOYLE, DIRECTOR OF LINCOLN AND LANCASTER COUNTY HUMAN SERVICES

ARPA Focus Areas for Human Services



- ▶ Youth Crisis Response
- ▶ Racial Equity
- ▶ Youth and Adult Behavioral Health
- ▶ Basic Needs
- ▶ Victim Safety & Violence Prevention

Youth Crisis Response



- ▶ Data
- ▶ Community Needs Assessment
- ▶ Stakeholders
- ▶ Outside Consultant
- ▶ Community Engagement
- ▶ Research/Site Visits
- ▶ Common Vision/Mission
- ▶ Shared Terminology
- ▶ Solid Plan
- ▶ Sustainability Outline



Community Based Support through ARPA Funding Grant Solicitation



- Identify basis of need or negative impact of the COVID-19 public health emergency to your organization.
- Describe how this proposed project will respond to the coronavirus public health emergency or its negative impacts.
- Provide data demonstrating how the proposed target population was disproportionality impacted by the coronavirus pandemic.

Performance Reporting and Data Collection



- ▶ Partnership with University
- ▶ Centralized system to collect data related to ARPA allocations
- ▶ Reporting demographical information
- ▶ Did the service address the needs as the result of the COVID-19 public health emergency





Allegheny County
Department of
Human Services

Allegheny County

Pennsylvania

Investing ARPA Funds in Behavioral Health Crisis Response
National Association of Counties
2.22.22



Allegheny County

- 1.2 million residents
 - White 79%
 - Black 13%
 - Asian 4%
- 744 square miles
- 130 self-governed municipalities
- 120 police departments
- 43 school districts

Allegheny County Department of Human Services 2020 Snapshot

Total

- 200K people served
- 405 Contracted Providers
- \$1.1B Budget
- 68 funding sources

Office of Behavioral Health

- 59K persons served
- 140 contracted providers
- \$148M Budget
 - 94% allocated to contracted providers

2020 Mental Health Crisis Numbers

- **Telephone Contacts**
 - 96,000+
 - ~67,000 incoming
- **Residential**
 - ~1,800
- **Walk-in**
 - ~6,100
- **Mobile**
 - ~9,000

ARPA Funds:

Mobile Crisis Expansion and Peer Run Respite

- Crisis Stakeholder Workgroup
 - 30 stakeholders across crisis systems
 - Sixteen recommendations
 - (2) Expanding mobile options and functions
 - (8) Increase availability of easy access, low barrier respite centers, and similar models
 - (9) Launch co-response teams to respond to 911 calls
 - (11) Increase availability of preventative and proactive outreach supports to prevent a crisis before it occurs.
- Mobile Crisis Expansion
 - 400 police dispatches a day may involve individuals with unmet behavioral health needs
 - Highest rates of 911 behavioral health dispatches are communities of color
- Peer Run Respite
 - Easily accessible
 - Low barrier
 - Short-term overnight
 - Non-clinical alternative to hospitalization

Contact Information

Jewel Denne
Assistant Deputy Director
Allegheny County Department of Human Services
412.350.5747
jewel.denne@alleghenycounty.us



Questions?



THANK YOU!

The National Association of Counties

660 N. Capitol Street NW | Suite 400

Washington, D.C. 20001 | 202.393.6226 | www.naco.org

fb.com/NACoDC | twitter.com/NACoTWEETS

youtube.com/NACoVIDEO | naco.org/linkedin

