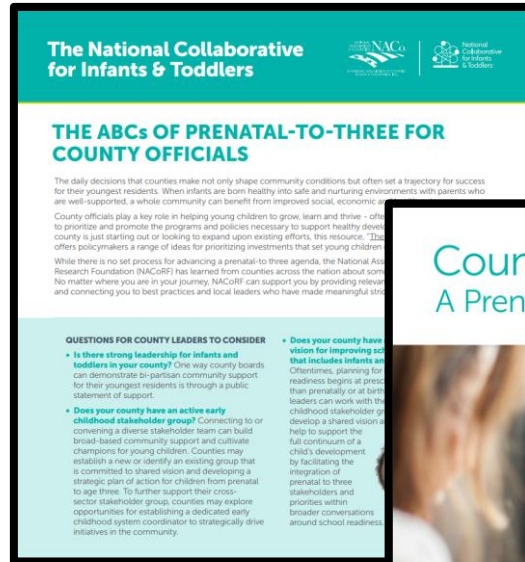


Counties for Kids

Resources



www.countiesforkids.org



I am a **Counties
for Kids**
champion.

www.countiesforkids.org



Counties invest \$63 billion
annually in federal, state and
local funds in **vital
services for
children and
families.**

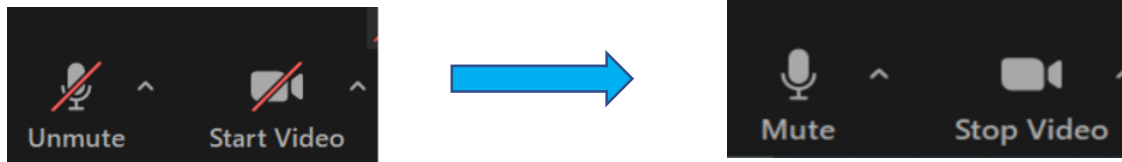
Source: NACo Analysis

www.countiesforkids.org

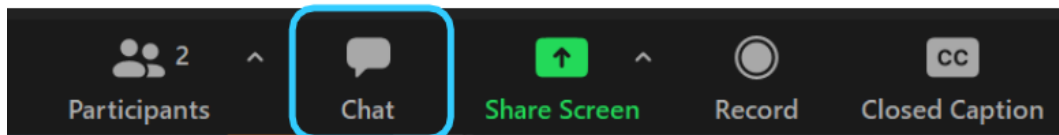


Instructions

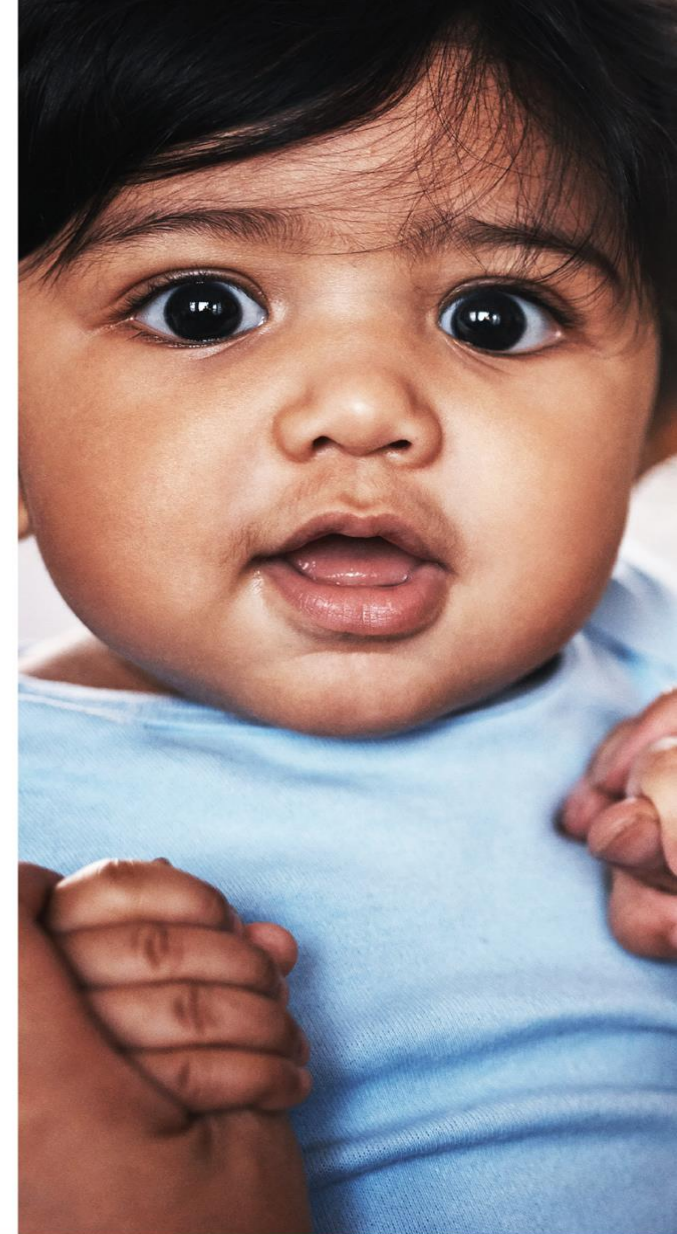
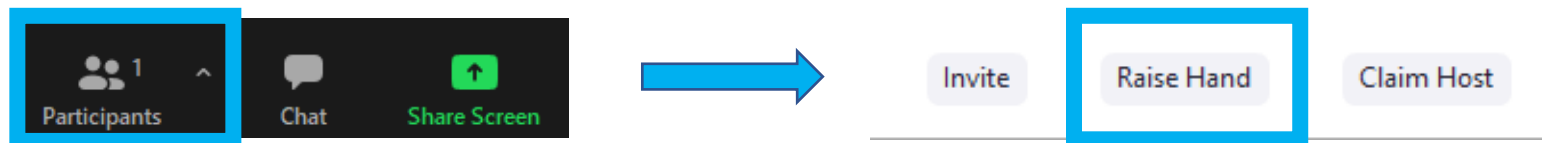
To mute/unmute and start/stop video:



To access the chat box:



To raise/lower your hand:



Agenda

Suburban PN-3 Peer Learning Network: Creating Public-Private Partnerships with Local Foundations on Prenatal-to-Three

- Welcome
- County Speaker – Guilford County, N.C.
- Questions & Interactive Discussion
- Conclusion



County Speakers



CHARRISE HART

Chief Executive Officer, Ready for School, Ready for Life



MICHELLE CHAPIN

Project Manager, Ready for School, Ready for Life

Building a System of Care



Charrise Hart, CEO
Michelle Chapin, Project Manager

April 14, 2021

Our mission

Ready for School, Ready for Life

is collaborative effort to build a connected, innovative system of care for Guilford County's youngest children and their families.

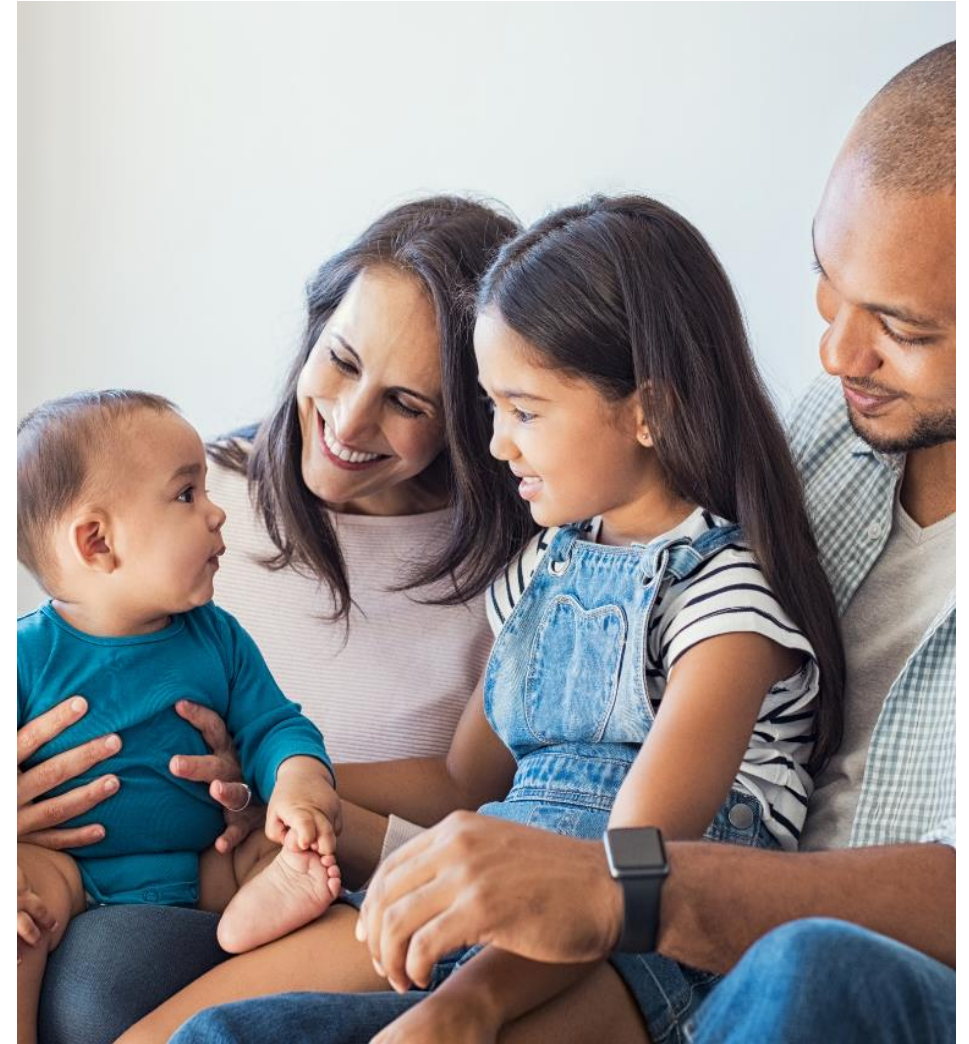


Why

80% of a child's brain development happens by age three.

50% of Guilford's children arrive at kindergarten unprepared.

These children may not be reading at **grade level in third grade.**



Ready Ready History: Creating Public-Private Partnerships with Local Foundations

2014: Grassroots effort that grew out of an initiative funded locally guided by **family engagement**

2016: Early childhood summit with local funders, community leaders, **families**

2017: The Duke Endowment investment and partnership

2018: Blue Meridian Partners investment

2020: Pritzker Children's Initiative Community Innovation Grant

2021: Two bills introduced into NC General Assembly

Guilford County by the Numbers

55.8% White

33.8% Black/African American

4.9% Asian alone

0.5% American Indian/Alaskan native alone

2.6 % Other

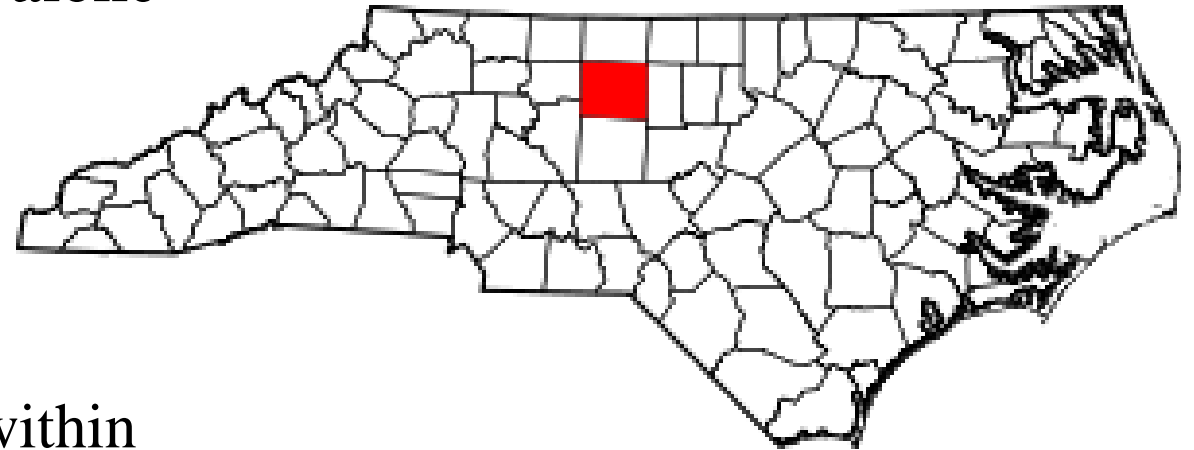
2.5% Two or more races

7.8% Hispanic/Latino of any race

100+ languages and dialects are spoken within
the public-school system

523,582 est. population 2018

52.2% of children ages 5 and under
living under 200% federal poverty line



American Community Survey 5-Year Estimates, 2018.

Are Guilford County children prepared for Kindergarten?

Kindergarten beginning of year English language/communication proficiency (At or above benchmark)*				
Year	All Students	White	Black	Hispanic
2015-2016	63%	75%	63%	45%
2016-2017	59%	69%	57%	42%
2017-2018	54%	67%	51%	34%
2018-2019	50.7%	63.4%	47%	32.5%

**Dynamic Indicators of Basic Early Literacy Skills (DIBELS) KPI Update, Guilford County Schools*

Our aim: Population-level change

Planned and
well-timed
pregnancies

Healthy births

On-track
development
at 12, 24, and
36 months

School
readiness by
kindergarten

Success by
third grade



Elimination of disparities

Ready for School, Ready for Life Phases

	Phase 1 2019* 2020 2021	Phase 2 2022 2023 2024 2025	Phase 3 2026 2027	Phase 4 2028 2029 2030
Prenatal to 3				
Ages 3 to 5	Initial	Full		
Ages 5 to 8	Piloting	Initial	Full	
	Planning	Piloting	Initial	Full

Our priorities



**Implement
Navigation
System**



**Expand
Proven
Programs**



**Drive
Continuous
Quality
Improvement**



**Build
Enabling
Technology**



**Evaluate
for Learning and
Impact**



**Expand
Early
Literacy**



**Enhance
High Quality
Care and
Education**



**Improve
PreK to K
Transition**



**Build
Public
Will**



**Engage
Family Voice**

Implement navigation system



- Many families and providers face challenges in connecting with services.
- Navigation creates a system that helps families plot a course to access the best of a wide variety of programs available to them in Guilford County.
- Guilford County Health Department staff serve on the Navigation Steering Committee, its workgroups; Health Dept. programs are critical to coordination of care.

Expand proven programs



PEDIATRIC CARE • SUPPORTING • PARENTING
A Program of ZERO TO THREE

- These proven programs have improved service delivery to influence our targeted outcomes. Family Connects sits within the Guilford County Health Department.
- These three programs have documented causal impacts on child well-being through rigorous research.
- Program Integration components: program-based navigation, shared branding, cross-program handoffs, and efficient service delivery.
- In 2020 these three programs collectively served nearly 15,000 Guilford county children.

The Basics Guilford



**Maximize Love,
Manage Stress**



**Talk, Sing and
Point**



**Count, Group
and Compare**



**Explore through
Movement and
Play**



**Read and
Discuss Stories**

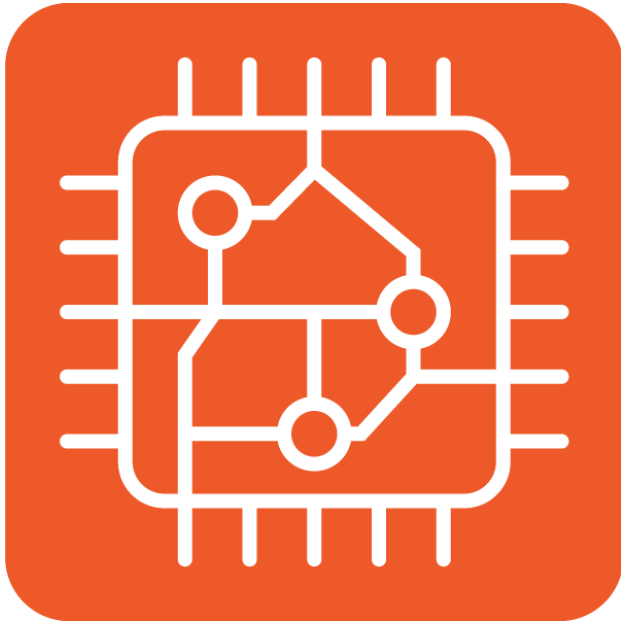
www.guilfordbasics.org

Build Continuous Quality Improvement Culture



- During 2018-2020 13 early childhood programs participated in a continuous quality improvement effort including five from the GC Health Department.
- Guilford County staff served on the CQI Workgroup.
- Coaches identified ways programs could improve collecting, analyzing, and using data to provide higher quality services and improve outcomes.
- Currently, we are collaborating with UNC-Chapel Hill's National Implementation Research Network (NIRN) to develop our 2021-22 strategy.

Build Enabling Technology



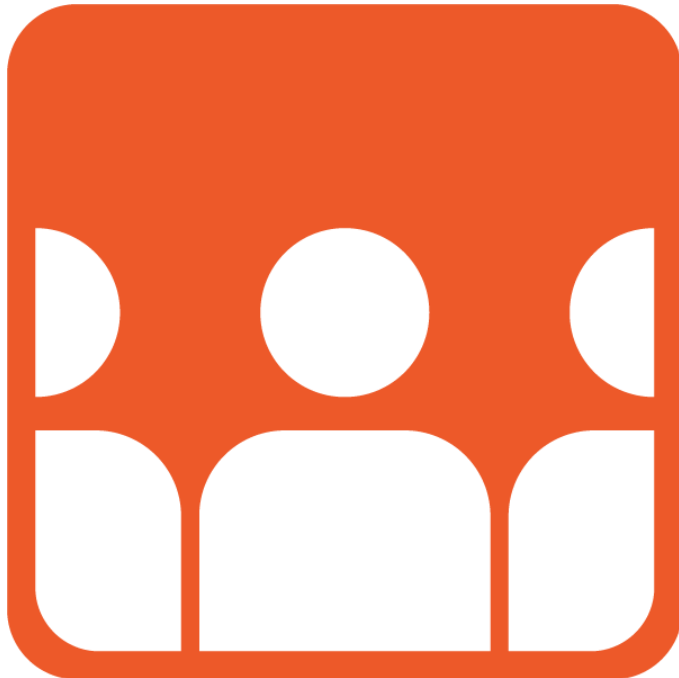
- Ready Ready and its partner organizations are developing an innovative integrated data system (IDS).
- Guilford County staff representation on an initial advisory council and currently supports the work.
- IDS will enable care coordination, service monitoring, and outcomes tracking for more than 30,000 young children and families in Guilford County.
- Families will own their data and have control over when to share and with which programs.

Conduct rigorous evaluation



- A small team, facilitated by MDRC, continues to revise our initiatives Theory of Change, based on what has been learned through our work over the past three years.
- Developed Values & Principles with community partners, including families, Guilford County Health Dept. staff and UNC Chapel-Hill NIRN.
- Current work is focused on systems change that will impact birth outcomes and detailing how the Ready Ready priorities will generate improvement.
- IDS will provide data we need to evaluate our work.

Build public will



- The Public Policy Committee has two subcommittees to advance this work:
 - Legislative Action
 - Communications/Public Will Building
- Two legislative asks have been developed – to support IDS and a project to improve the Early Childhood Workforce (ECW). NC Legislators have been supportive of our requests.
- Ready Ready is among 41 organizations nationally to sign the Federal Think Babies Policy Solutions for 2021. Ready Ready is among the TBNC Alliance leadership organizations leveraging this work to support healthy beginnings, supported families, and early care and learning.



Stay in touch!

1

Sign up for our monthly newsletter

<https://readyready.link/NewsSignup>

2

Visit our website

www.getreadyguilford.org/

3

Get trained in The Basics

<https://readyready.link/BasicsTrain>

Thanks!

Discussion Questions

- How have you or your county made the case for PN-3 as a key issue in your community?
- Do you have similar efforts with private partners who are collaborating on your PN-3 strategic or policy making efforts?
- How are you leveraging private partners or local funders to help fill equity gaps and target the unique needs of families in our community? How have foundations supported your equity work?
- Have you been able to use private funding to help finance your PN-3 systems and services?
- Have you been able to leverage philanthropic dollars to increase local investments for your county's PN-3 services, collective impact or systems building efforts?
- What role have local foundations played during COVID-19?
- What is your county doing to support young children with the American Rescue Plan funds?



CONTACT US

www.countiesforkids.org
info@countiesforkids.org

Arabella Pluta-Ehlers, Program Manager
202.942.4227 | aplutaehlers@naco.org



Thank you!



© NATIONAL ASSOCIATION OF COUNTIES
RESEARCH FOUNDATION, INC.

660 North Capitol St. NW | Suite 400 | Washington, D.C. 20001
202.393.6226 | www.NACo.org

fb.com/NACoDC | [@NACoTweets](https://twitter.com/NACoTweets)
youtube.com/NACoVideo | www.NACo.org/LinkedIn