

... { NACo's **WESTERN INTERSTATE REGION** 2018 CONFERENCE



BLAINE COUNTY / SUN VALLEY, IDAHO **MAY 23–25, 2018**



NACo's **WESTERN INTERSTATE REGION** 2018 CONFERENCE

THE **STEPPING UP** INITIATIVE



Justice Center
THE COUNCIL OF STATE GOVERNMENTS

AMERICAN
PSYCHIATRIC
ASSOCIATION
FOUNDATION

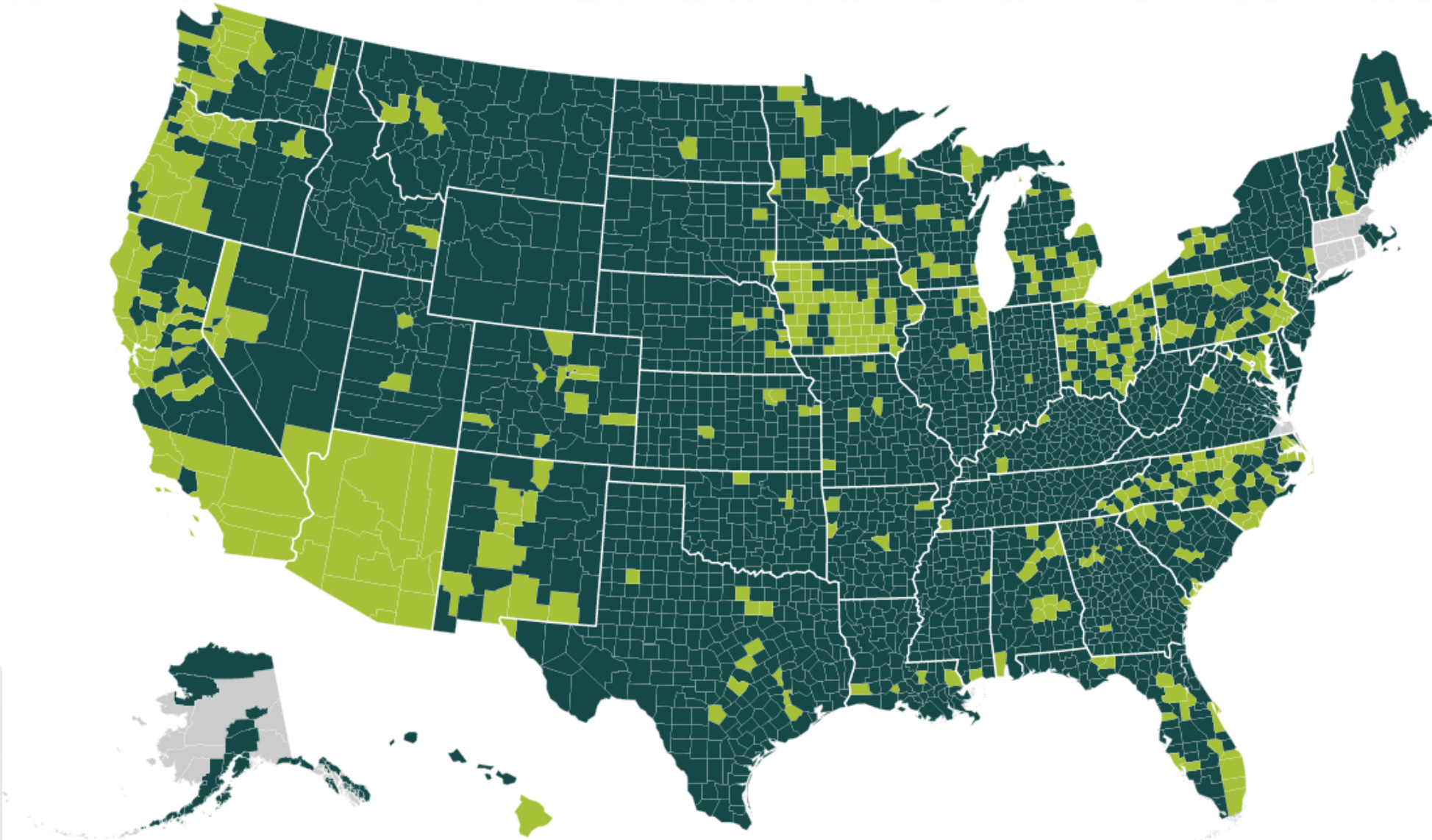


BLAINE COUNTY / SUN VALLEY, IDAHO **MAY 23-25, 2018**



Stepping Up: Collecting Accurate and Timely Data on People with Mental Illnesses in Your Jail

NACo's **WESTERN INTERSTATE REGION** 2018 CONFERENCE



BLAINE COUNTY / SUN VALLEY, IDAHO **MAY 23-25, 2018**

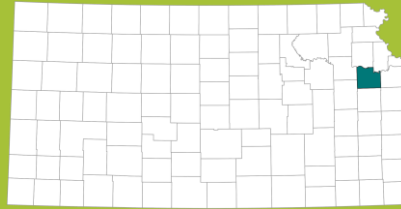


NACo's **WESTERN INTERSTATE REGION** 2018 CONFERENCE

Stepping Up Innovator Counties



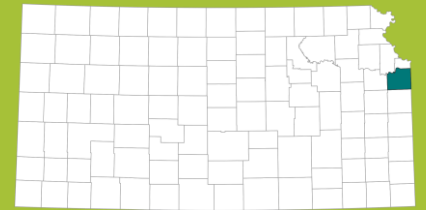
Calaveras County, Calif.



Douglas County, Kan.



Pacific County, Wash.



Johnson County, Kan.



Champaign County, Ill.



Franklin County, Ohio



Miami-Dade County, Fla.

BLAINE COUNTY / SUN VALLEY, IDAHO MAY 23–25, 2018



..... { NACo's **WESTERN INTERSTATE REGION** 2018 CONFERENCE



The Honorable Roy Charles Brooks
Commissioner, Tarrant County, Texas
President, National Association of Counties



Dan Gillison
Executive Director
American Psychiatric Association Foundation



Justice Center
THE COUNCIL OF STATE GOVERNMENTS

Richard Cho, PhD
Behavioral Health Director
Council of State Governments Justice Center

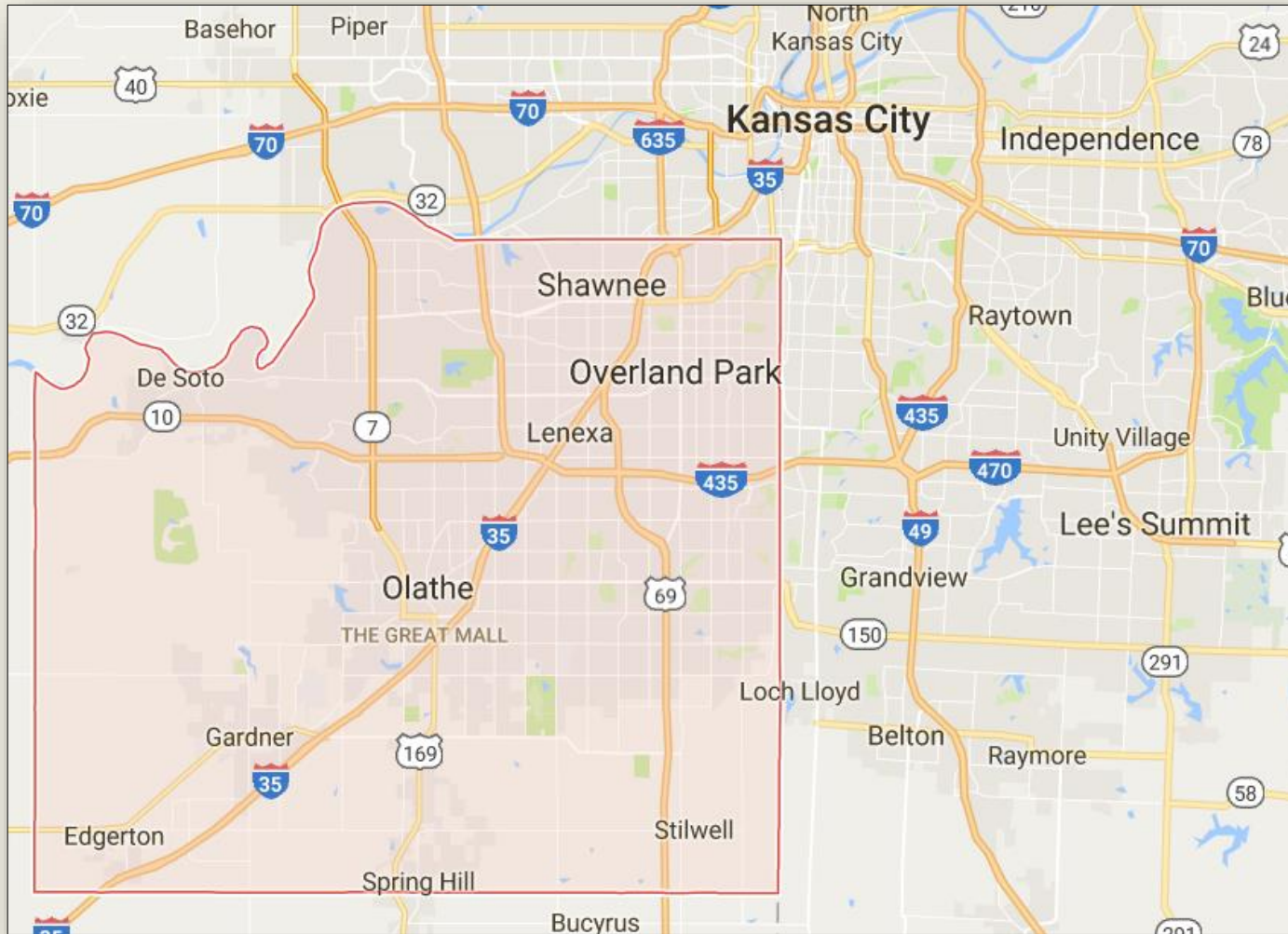
BLAINE COUNTY / SUN VALLEY, IDAHO MAY 23-25, 2018





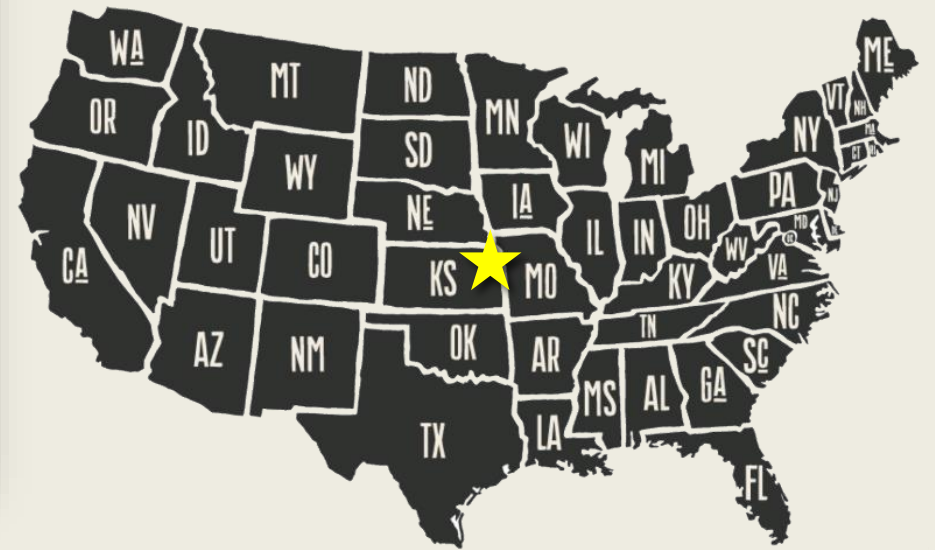
THE
STEPPING UP
INITIATIVE





KC metro population
2.3 million

Johnson Co. population
585,000



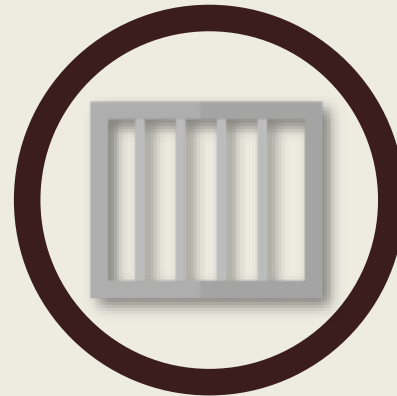
About Johnson County, KS



20
cities



17
municipal
& county law
enforcement
agencies



1,100
beds



760
avg. daily
population

Justice Information Management System (JIMS)



My Resource Connection

*Collaborating
for Success*



Brief Jail Mental Health Screen

BRIEF JAIL MENTAL HEALTH SCREEN

Section 1
Name: _____ Detainee #: _____ Date: ____/____/____ Time: ____ AM/PM

Section 2

Questions	No	Yes	General Comments
1. Do you currently believe that someone can control your mind by putting thoughts into your head or taking thoughts out of your head?			
2. Do you currently feel that other people know your thoughts and can read your mind?			
3. Have you currently lost or gained as much as two pounds a week for several weeks without even trying?			
4. Have you or your family or friends noticed that you are currently much more active than you usually are?			
5. Do you currently feel like you have to talk or move more slowly than you usually do?			
6. Have there currently been a few weeks when you felt like you were useless or sinful?			
7. Are you currently taking any medication prescribed for you by a physician for any emotional or mental health problems?			
8. Have you ever been in a hospital for emotional or mental health problems?			

Section 3 (Optional)
Officer's Comments/Impressions (check all that apply):
☐ Language barrier ☐ Under the influence of drugs/alcohol ☐ Non-cooperative
☐ Difficulty understanding questions ☐ Other, specify: _____

Referral Instructions: This detainee should be referred for further mental health evaluation if he/she answered:
• YES to item 7; OR
• YES to item 8; OR
• YES to at least 2 of items 1 through 6; OR
• If you feel it is necessary for any other reason

☐ Not Referred
☐ Referred on ____/____/____ to _____
Person completing screen _____

INSTRUCTIONS ON REVERSE ©2003 Policy Research Associates, Inc.

- Conducted by jail staff at intake
- It is not considered protected health information (a person cannot self diagnose)
- We attempt to screen every detainee booked

Brief Jail Mental Health Screen

Long Form Booking

Main Page-2 SMT's Page-4 Mental Health Screen

No.	Questions	Yes	No	Refused	General Comments
1.	Do you CURRENTLY believe that someone can control your mind by putting thoughts into your head or taking thoughts out of your head?	<input type="radio"/>	<input checked="" type="radio"/>	<input type="radio"/>	
2.	Do you CURRENTLY feel that other people know your thoughts and can read your mind?	<input type="radio"/>	<input checked="" type="radio"/>	<input type="radio"/>	
3.	Have you CURRENTLY lost or gained as much as two pounds a week for several weeks without even trying?	<input checked="" type="radio"/>	<input type="radio"/>	<input type="radio"/>	LOST
4.	Have you or your family or friends noticed that you are CURRENTLY much more active than you usually are?	<input checked="" type="radio"/>	<input type="radio"/>	<input type="radio"/>	
5.	Do you CURRENTLY feel like you have to talk or move more slowly than you usually do?	<input type="radio"/>	<input checked="" type="radio"/>	<input type="radio"/>	
6.	Have there CURRENTLY been a few weeks when you felt like you were useless or sinful?	<input checked="" type="radio"/>	<input type="radio"/>	<input type="radio"/>	
7.	Are you CURRENTLY taking any medication prescribed for you by a physician for any emotional or mental health problems?	<input type="radio"/>	<input checked="" type="radio"/>	<input type="radio"/>	IN THE PAST FOR SCHIZOPHRENIA/BIPOLAR
8.	Have you EVER been in a hospital for emotional or mental health problems?	<input type="radio"/>	<input checked="" type="radio"/>	<input type="radio"/>	

Officer's Comments/Impression (check ALL that apply):

☐ Language barrier

☐ Under the influence of drugs/alcohol

☐ Non-cooperative

☐ Refused Screening

☐ Difficulty understanding questions

☐ Other, specify:

Prior to BJMHHS

One-way match



Prior to BJMHS

Two key problems:

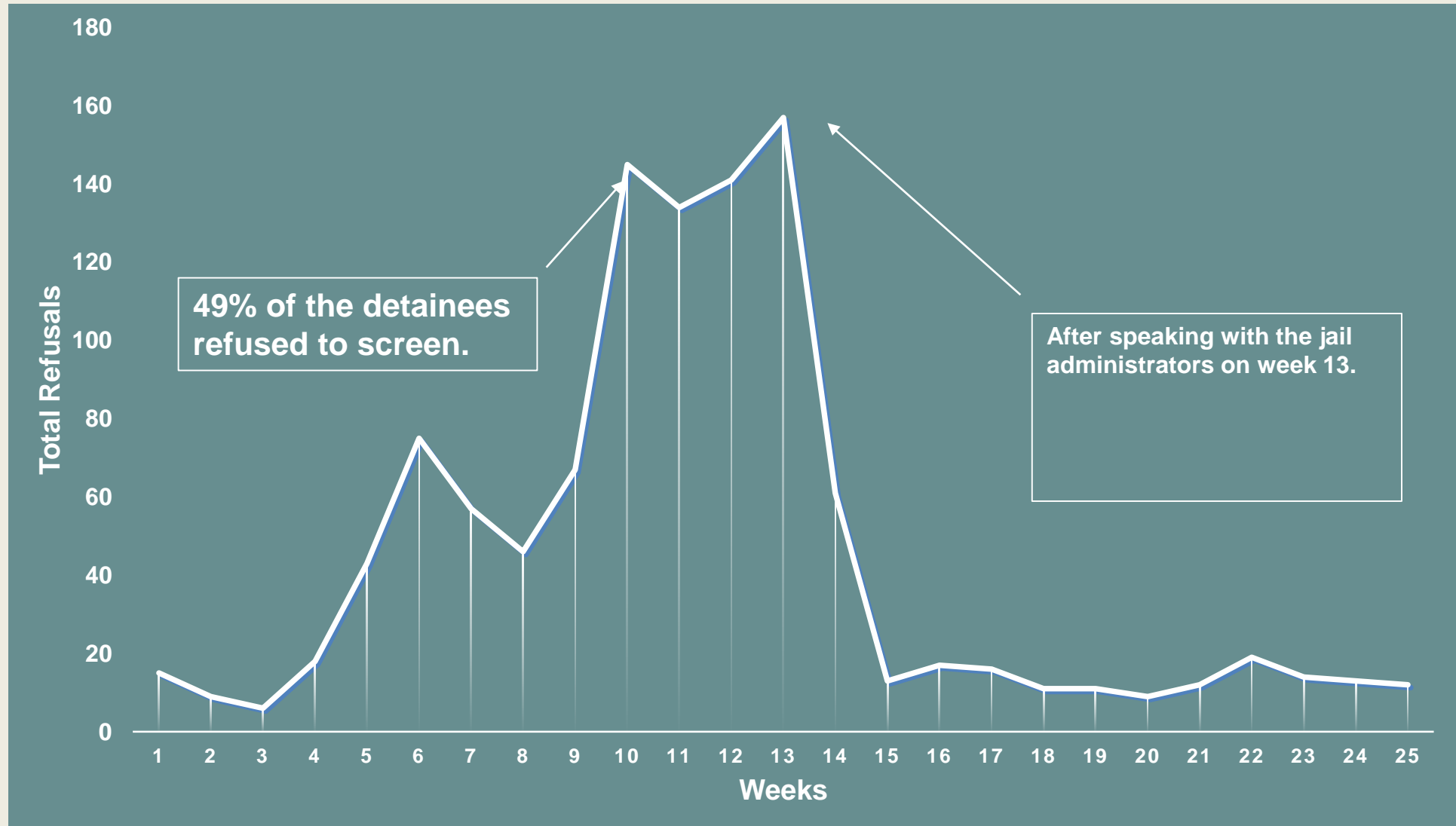


Only captures
**the most
vulnerable
population**



Of our detainees
**are released
in 48 hours
or less**

BJMHS refusals



Our review of data found



The county's
current
**prevalence
rate**



One third of our detainees
**had a subsequent booking
within the last 12 months**

Leverage BJMHS with other data

We have the ability to:



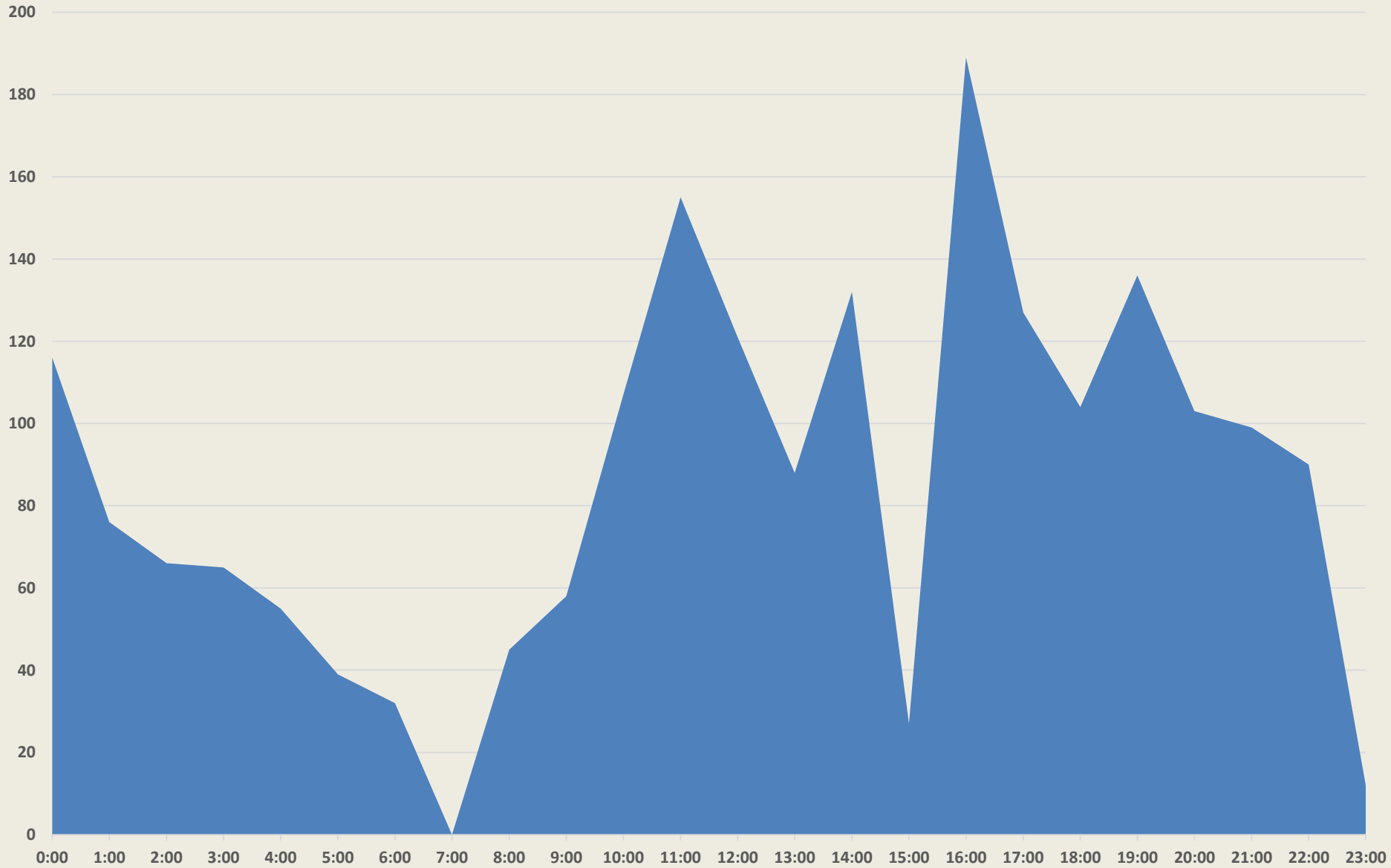
Compare the
**length of stay for
detainees with mental
illness symptoms**



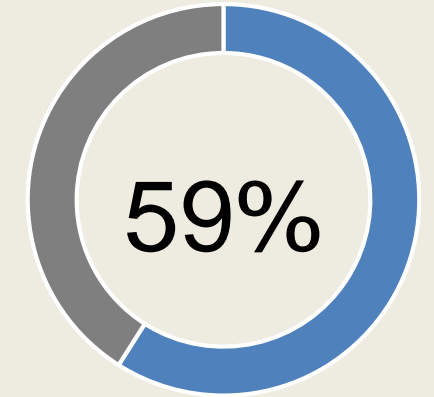
Look at
**peak booking/release
times for detainees
with mental illness**

All Flagged Population

Booking Times (~ 10 per day)



Johnson County Residents





Break down
data
**from each
police
dept.**

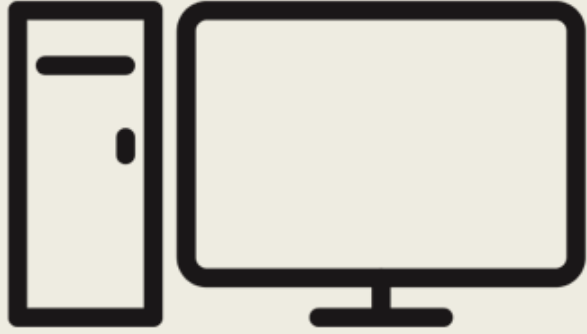


Compare
**booking
types**



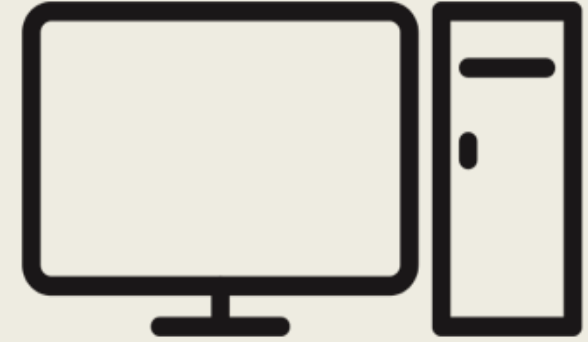
Review
**charge
descriptions**

Booking processes



Screen results
entered in JIMS
**by the
Sheriff's Office**

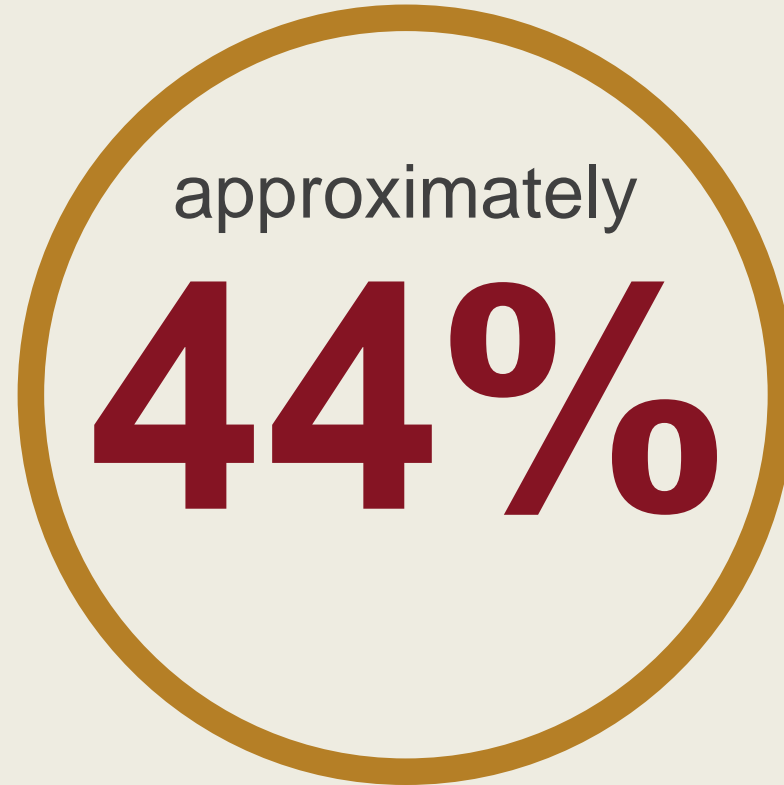
JIMS sends email
**to Johnson
County Mental
Health staff daily**



Mental health staff
**look up each
person in
Electronic Record**

Early Results

Percent of
persons contacted
within 72 hours



Data from the Mar - Dec 2017

Robert A. Sullivan, Jr.
Director

Department of Corrections
588 E. Santa Fe, Suite 3000
Olathe, Kansas 66061

Direct (913) 715-4525 | Office (913) 715-4500



Douglas County, Kansas

Mike Brouwer, Reentry Director
Douglas County Sheriff's Office



Douglas County Corrections Facility

About Douglas County, KS



120,000

citizens



5,500

annual
bookings



186

beds



231

avg. daily
population



Douglas County Corrections Facility

Utilizing Screening to Divert from Jail back into the Community

- Informed Decision Making
 - Public Safety
 - Early Intervention Leads to Better Outcomes
- Putting These Decisions Into Action
 - Engaging the right service/s
 - Providing Case Management to fill the Gap

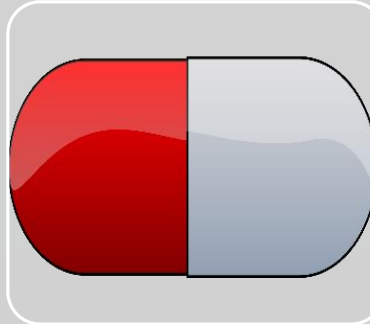


Douglas County Corrections Facility

Screening



Brief Jail
Mental
Health
Screen



SBIRT
Audit C
Dast 10



**Brief
Trauma**
Question-
naire



LSIR-SV
Level of
Service
Inventory



Douglas County Corrections Facility

Assessment



Douglas County Corrections Facility

Data Drives the Decisions

- Data Kept Electronically
 - BJMH Screen Generates an “Alert Code”
 - SMI Assessment determines “Alert Code” in Medical Tab
 - Data can be De-identified and Analyzed
- Share Success Stories with Data Presentations
- Join the Data Driven Justice Initiative



Douglas County Corrections Facility

Challenges

- Timeliness of Services
- DIVERT was a dirty word
- Storing Data - HIPAA
- Information Sharing
 - Community Mental Health in the Building
 - Release of Information
 - Importance of Shared Definitions



Douglas County Corrections Facility

Contact

Mike Brouwer, M.Ed.

Reentry Director

785-830-1001

mbrouwer@dgso.org

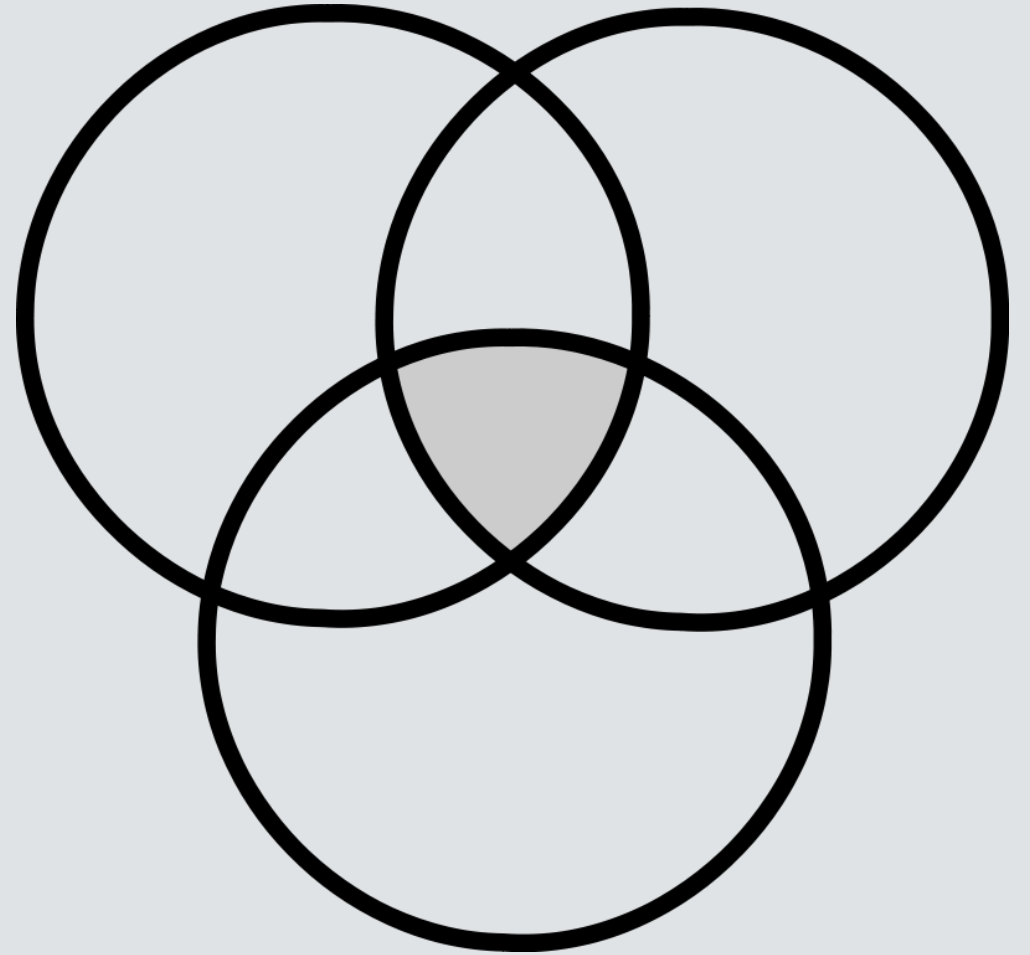


Douglas County Corrections Facility

Another Perspective Into Reducing the Number of People with Mental Illness in Jail



Smart Justice is at
the intersection of
Public Safety,
Economic
Development, and
Social Justice





About Franklin County, Ohio



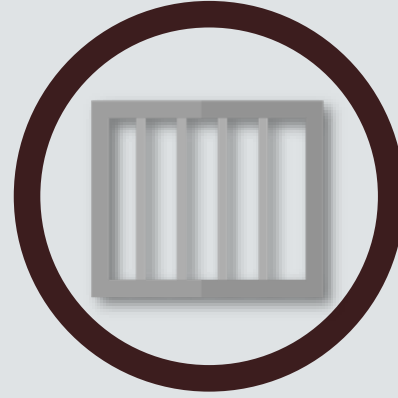
43

cities,
villages,
townships



28

law enforcement
agencies



2330

beds



2150

avg. daily
population



THE JAIL ISSUES

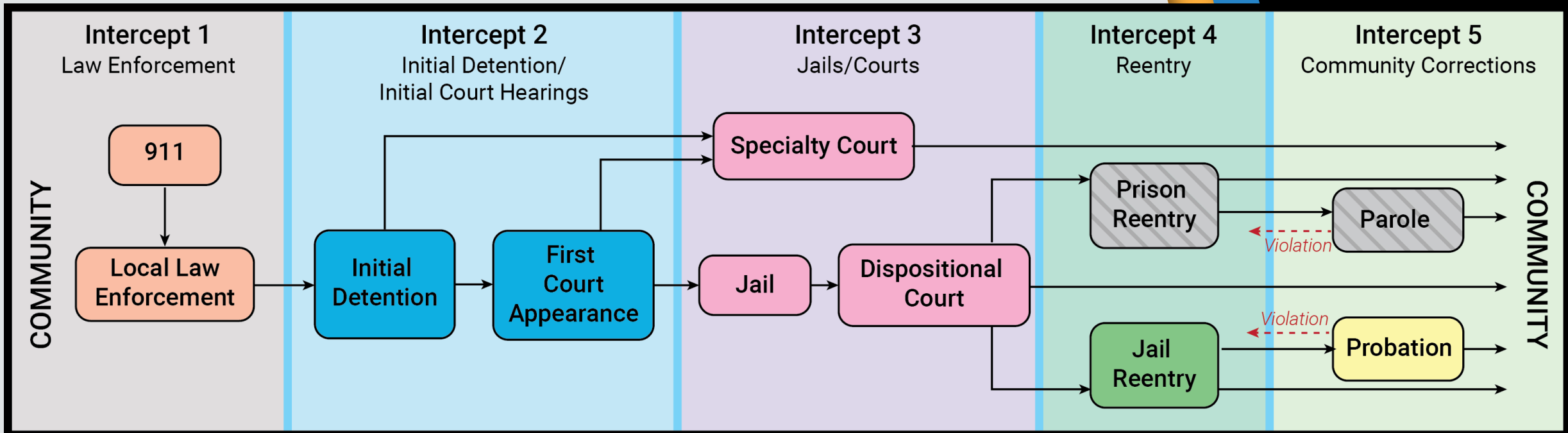
- Jail is *de facto* mental health treatment facility
- Jail is *de facto* detox and AOD treatment facility
 - Jail is *de facto* homeless shelter
 - Many underserved Veterans
- Disproportionate impact to communities of color, communities of poverty, immigrants, and marginalized groups
 - Women are fastest growing population
- Many are pre-trial and not yet convicted of any crime

BUT JUST HOW BIG ARE THE PROBLEMS?

- What resources are needed to address them?
- Who will pay for it and how much will it cost?
 - What happens if we do nothing?

WHAT IT'S ALREADY COSTING THE COMMUNITY

- Emergency Room - \$1,520/visit
- Jail - \$100/day - \$3,000/month
- Homeless shelter - \$75/day - \$2,250/month/person
- Police response - \$150/run
- EMS/Fire response - \$375/run



Common Definitions

A graphic of a license plate with a black border and a light beige background. The text "#WORDSMATTER" is written in a bold, black, sans-serif font. The plate has small circular details on the left and right sides, resembling mounting holes.

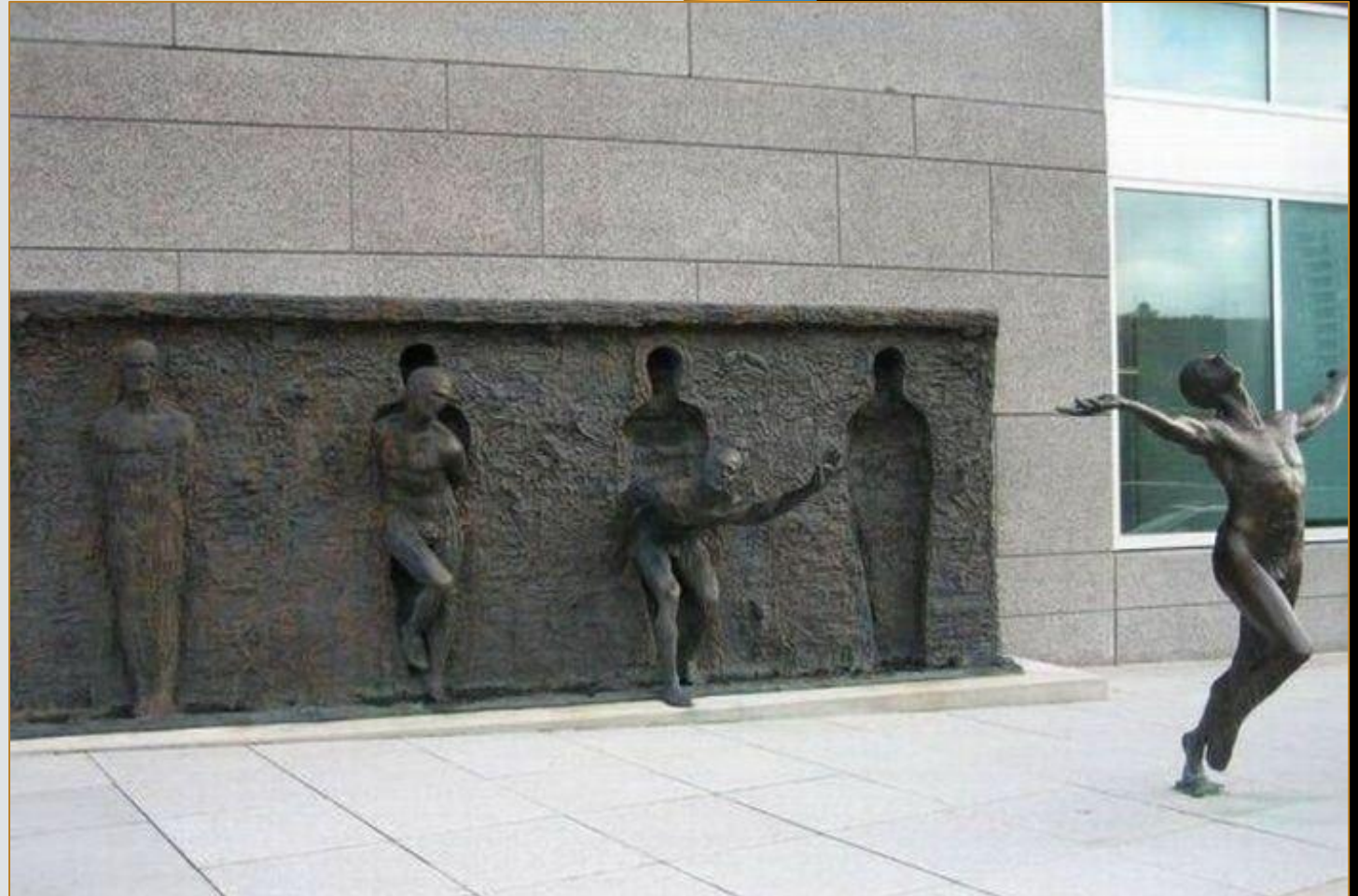
- **Severe Mental Illness:** A mental, behavioral, or emotional disorder of an individual age 18 or older (excluding developmental, neurocognitive, and substance use disorders) that is currently diagnosable or has been diagnosed in the past year, of sufficient duration to meet diagnostic criteria specified within the most recent version of the Diagnostic and Statistical Manual of Mental Disorders (DSM) and resulting in **serious functional impairment which interferes with one or more major life activities**. Such disorders would include but not be limited to: **Schizophrenia** spectrum and other psychotic disorders; **Bipolar** disorders; **Major depressive** disorders of at least moderate severity or with psychotic features; **Obsessive-compulsive** disorders; **Panic** disorder; or **Post-traumatic stress** disorder. These conditions may exist with co-occurring developmental, neurocognitive and/or substance use disorders.
- **Recidivism:** Recidivism is any conviction for a jailable offense, when the offense occurs within three years of conviction, release from a prison or jail sentence imposed for a conviction, or release from community control or post-release control, whichever is the later date.
- **Return to Jail Rate:** Return to jail is any return to incarceration, including re-arrest, violation of probation or parole, or order-in for failure to appear that occurs within three years of an original jailable offense.

What we now do:

Month	Bookings	MH Assess	% Assess	MH Sick Calls	% Sick Calls	COWS	% COWS	Streets of Columbus	% Streets	Veterans	% Veterans
Jun-17	2375	1991	84%	317	13%	182	8%	126	5%	105	4%
Jul-17	2381	2231	94%	452	19%	213	9%	128	5%	103	4%
Aug-17	2519	2603	103%	627	25%	267	11%	141	6%	105	4%
Sep-17	2289	2322	101%	650	28%	292	13%	129	6%	62	3%
Oct-17	2354	2397	102%	733	31%	306	13%	109	5%	92	4%
Nov-17	2370	2368	100%	738	31%	291	12%	110	5%	99	4%
Dec-17	2228	2255	101%	713	32%	262	12%	88	4%	76	3%
				*							
						Clinical Opiate Withdrawal Scale					
2017 full year:						Jail management system provides bookings, age, gender, race, address					
28,943 bookings						Objective classification system provides veteran status					
22,020 men						Medical records system provides MH assessments, MH sick calls, COWS, medication info					
6,923 women		24%									
				Census data		Note that this is not a pre-generated report; we are still collating data					
13,886 Black		48%		23%		by hand until we can get interfaces built for automatic report generation					
512 Latinx		2%		5%							
114 Asian		0%		5%		JMS new - live since mid-Jan 2018					
14,431 White		50%		69%		ObjClass live since Sep 2017					
						TechCare live since Jul 2017					
						*anything they think is serious enough for followup					
						we need to start tracking specifically SPMI					

What's the Current Goal?

- 30% reduction in jail population overall
- 50% reduction in MH/AOD jail residents
- 50% reduction in disparities



This is Miss Stella

40 years in and out of the system, 4 trips to prison, dozens of jail stays, hundreds of arrests.

1 new apartment

1 new life



Thank You

Michael Daniels

Michael.Daniels@franklincountyohio.gov

614.525.2197



NACo's **WESTERN INTERSTATE REGION** 2018 CONFERENCE



Robert Sullivan
Director of Corrections
Johnson County, Kan.



Michael Daniels
Justice Policy Coordinator
Franklin County, Ohio



Mike Brouwer
Reentry Director, Sheriff's Office
Douglas County, Kan.



Jay Davis
Captain, Sheriff's Office
Blaine County, Idaho

BLAINE COUNTY / SUN VALLEY, IDAHO **MAY 23-25, 2018**



..... { NACo's **WESTERN INTERSTATE REGION** 2018 CONFERENCE

THE
STEPPINGUP
I N I T I A T I V E

www.StepUpTogether.org

BLAINE COUNTY / SUN VALLEY, IDAHO **MAY 23-25, 2018**

