

# Stepping Up and Data-Driven Justice: Using and Sharing Data Across Health, Human Services and Justice Systems to Improve Responses for People Who Have Mental Illnesses

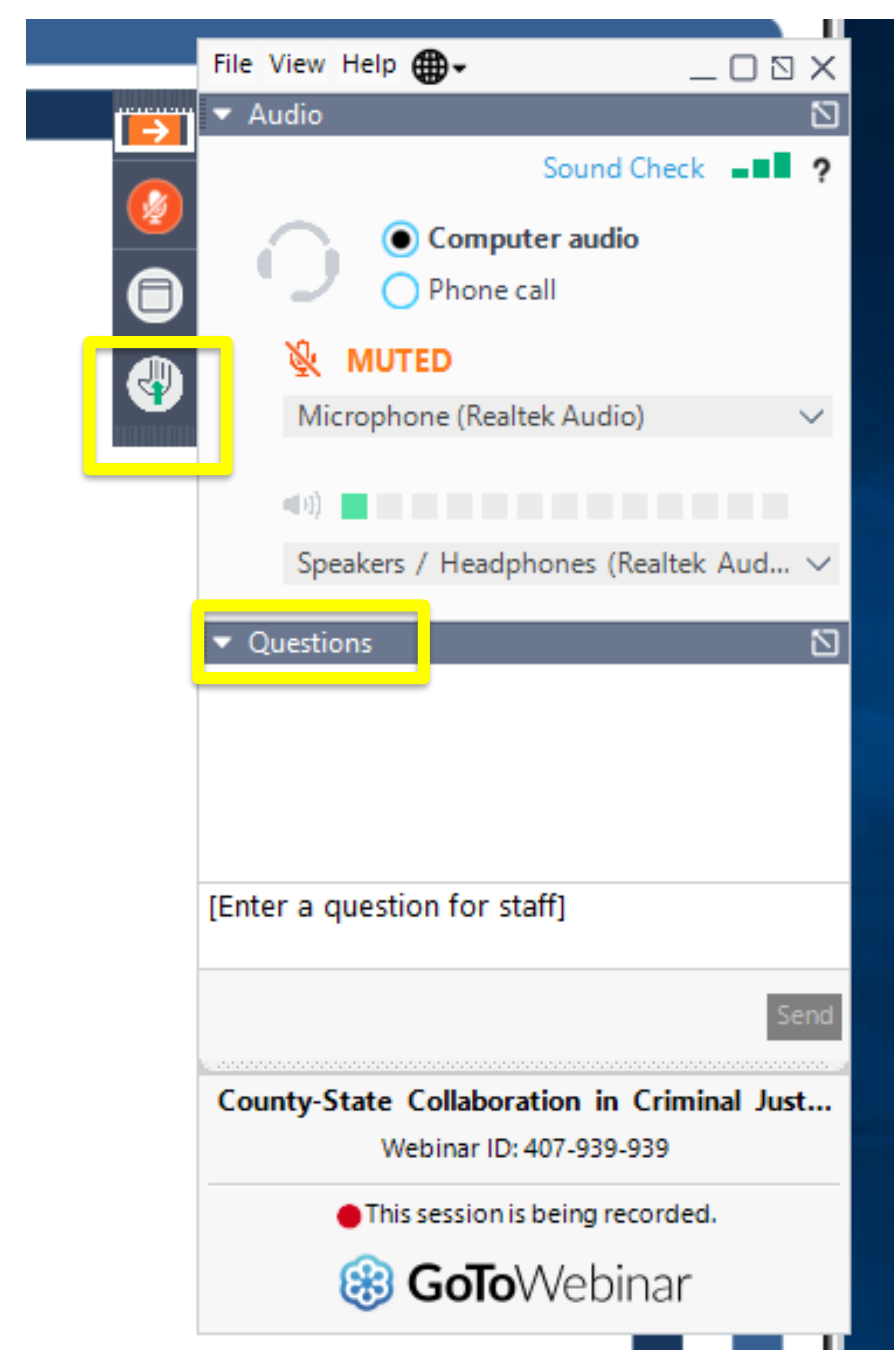
October 10, 2019

**Stronger Counties. Stronger America.**



# Logistics

- The questions box and buttons are on the right side of the webinar window.
- This box can collapse so that you can better view the presentation. To unhide the box, click the arrows on the top left corner of the panel.
- If you are having technical difficulties, please send us a message via the questions box. Lindsey or myself will reply to you privately and help resolve the issue.



THE  
**STEPPINGUP**  
I N I T I A T I V E

**Stepping Up** is a national initiative to reduce the number of people with mental illnesses in jails.



**Justice Center**  
THE COUNCIL OF STATE GOVERNMENTS



**#StepUp4MentalHealth**  
**[www.StepUpTogether.org](http://www.StepUpTogether.org)**

THE  
**STEPPINGUP**  
INITIATIVE

**500**  
COUNTIES  
AND COUNTING

Hundreds of counties across **43** states have joined Stepping Up to reduce the prevalence of mental illness in jails.



**47%**  
of the U.S. population lives in a Stepping Up county.



Approximately **2 million** times each year, people who have serious mental illnesses are admitted to jails.



**15** Innovator Counties are blazing the trail in data collection.



**More than 10** states have held statewide Stepping Up summits to advance their counties' work.



# Resources Toolkit



Monthly webinars and networking calls



Educational workshops at NACo and partner conferences



Quarterly calls of smaller networking groups of rural, mid-size and large/urban counties that have passed Stepping Up resolutions



A project coordinator handbook



Guidance on measuring the number of people with mental illnesses in jail



Written and online tools that are companions to the *Six Questions* report that present the latest research and case studies for county officials

[www.StepUpTogether.org/Toolkit](http://www.StepUpTogether.org/Toolkit)

# Contact Stepping Up

Nastassia Walsh, MA  
Associate Program Director for Justice  
National Association of Counties  
E: [nwalsh@naco.org](mailto:nwalsh@naco.org)  
P: 202.942.4289

Risë Haneberg, MPA  
Deputy Division Director, County Initiatives  
Council of State Governments Justice Center  
E: [rhaneberg@csg.org](mailto:rhaneberg@csg.org)  
P: 941.251.7175

Christopher Seeley, M.S.W.  
Program Director, School and Justice Initiatives  
American Psychiatric Association Foundation  
E: [cseeley@psych.org](mailto:cseeley@psych.org)  
P: 703.907.7861

[www.StepUpTogether.org](http://www.StepUpTogether.org)  
[info@stepuptogether.org](mailto:info@stepuptogether.org)



## Speaker: Maria Fryer



Maria Fryer  
Policy Advisor: Substance Abuse and  
Mental Health  
Bureau of Justice Assistance  
Office of Justice Programs  
U.S. Department of Justice



**BJA**  
Bureau of Justice Assistance  
U.S. Department of Justice

## Data-Driven Justice

The **Data-Driven Justice (DDJ)** project aims to break the cycle of incarceration by using data-driven strategies to improve how the justice system responds to frequent utilizers of jails, emergency rooms, shelters and other crisis services.



**Arnold  
Ventures**

[www.naco.org/datadrivenjustice](http://www.naco.org/datadrivenjustice)

[#DataDrivenJustice](https://twitter.com/DataDrivenJustice)



# Data-Driven Justice

## “Frequent Utilizers”

Chronic physical conditions  
Mental illness  
Substance abuse  
Homeless



## Fragmented and sporadic care

Hospitals and EDs  
Walk-in clinics  
Crisis centers  
Homeless shelters  
Detox facilities  
Treatment providers  
Criminal justice system

# Data-Driven Justice: Resources



**Playbook** with guidance on steps for developing a system of diversion, examples of interventions and strategies to divert frequent utilizers and case studies highlighting county innovations



Online **resource library** with information developed by counties and partners illustrating how to build community support, identify frequent utilizers, use and share data and identify diversion options



Quarterly **webinars** to share best practices and support peer-to-peer learning



Virtual **training sessions** and **workshops** for community leaders



Educational **workshops** at NACo conferences and partner meetings



Examples of **data-sharing agreements**, including MOUs and BAAs

# Data-Driven Justice: Contact

The background of the slide features a blurred image of hands typing on a laptop keyboard. Overlaid on this image is a faint, light blue network diagram consisting of nodes and connecting lines, suggesting a data-driven or digital theme.

Sharon Ondeje  
Program Manager, Justice  
National Association of Counties  
E: [sondeje@naco.org](mailto:sondeje@naco.org)  
P: 202.661.8868

## Speaker: Harrison Crist



Harrison Crist  
Criminal Justice Analyst  
Arnold Ventures



**Arnold  
Ventures**

## **Speaker: Philadelphia, Pa.**

Barbara Bunkle, PhD

Director of Enterprise Data Services  
Department of Behavioral Health and  
Intellectual disAbility Services  
City of Philadelphia

Charles McCrea, MHS

Assistant Manager  
Department of Behavioral Health and  
Intellectual disAbility Services  
City of Philadelphia





# DATA AND INFORMATION IN PHILADELPHIA'S BEHAVIORAL HEALTH AND CRIMINAL JUSTICE SYSTEMS

Stepping Up/DDJ Webinar

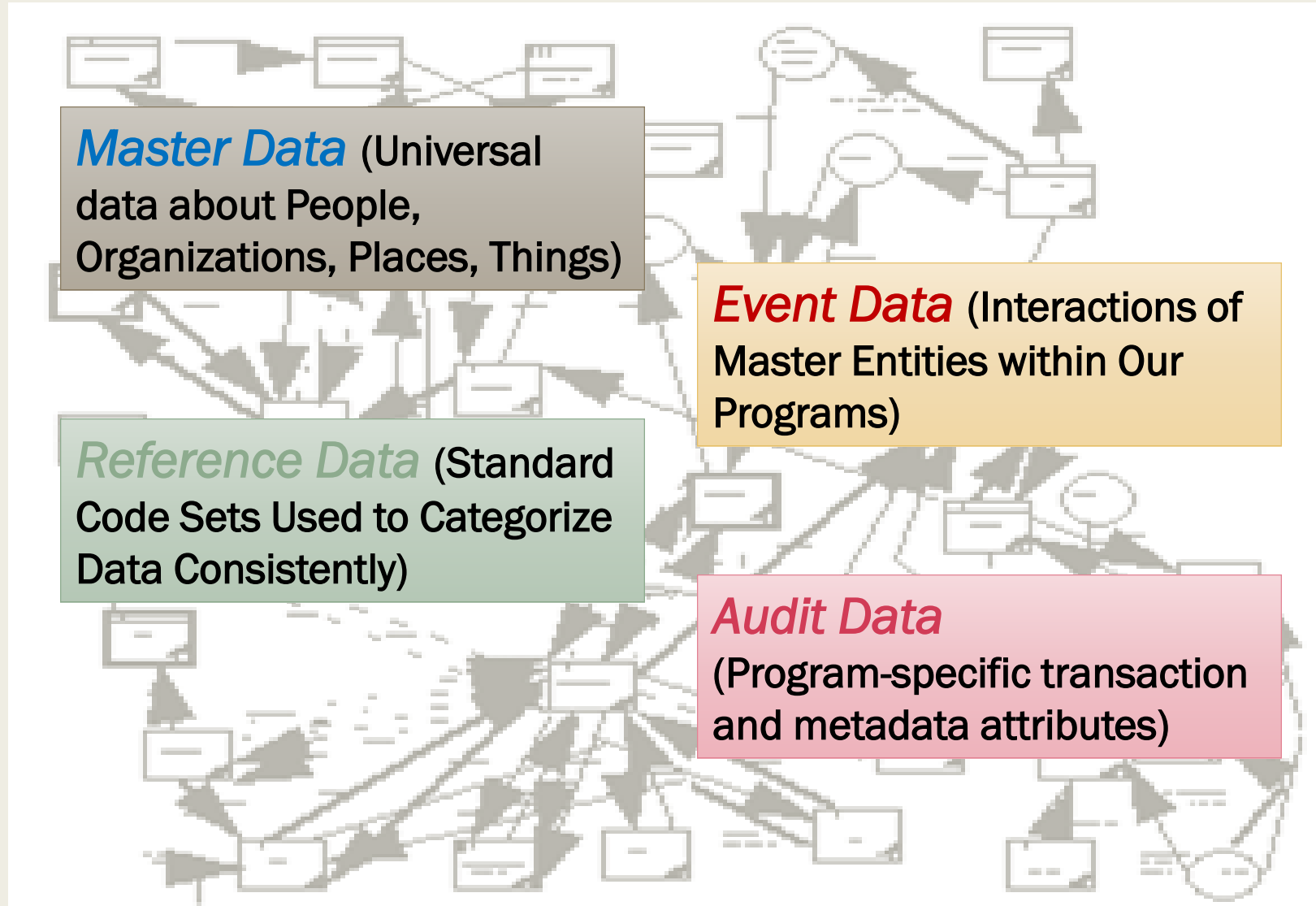
October 10, 2019

*Barbara Bunkle, PhD & Charles McCrea, MHS*

# Department of Behavioral Health and Intellectual disAbility Services (DBHIDS)



# Within That Spaghetti...

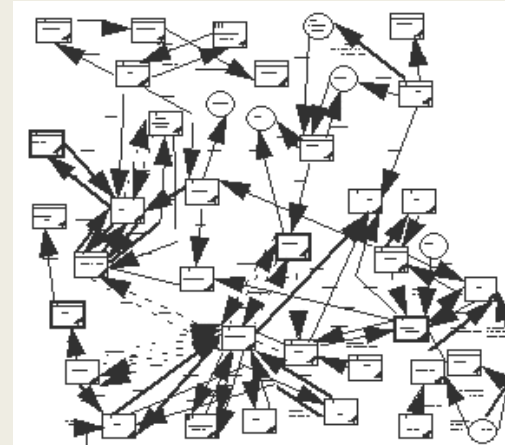




# We want *Data Reusability*, not *Data Sharing*.

Data sharing, as traditionally practiced, creates more problems than it solves. It provides a false sense of economy, security, and efficiency. Each sharing of data...

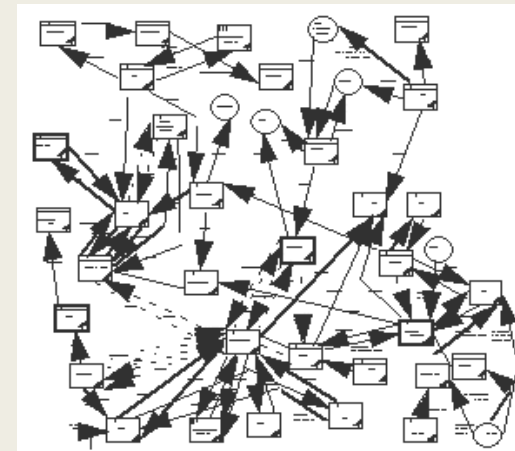
- Involves one-off mapping of the data being shared, and this **effort is repeated** every time the same data is shared with a new organization;
- Is based upon the needs of the two business units but uses data as defined by only one of the business units, leading to data quality issues due to **inconsistent data definitions**;
- Reduces the data quality of the organization, as unmanaged versions of the same data exist in multiple locations, **without any process** for resolving data quality or definition issues;



# We want *Data Reusability*, not *Data Sharing*.

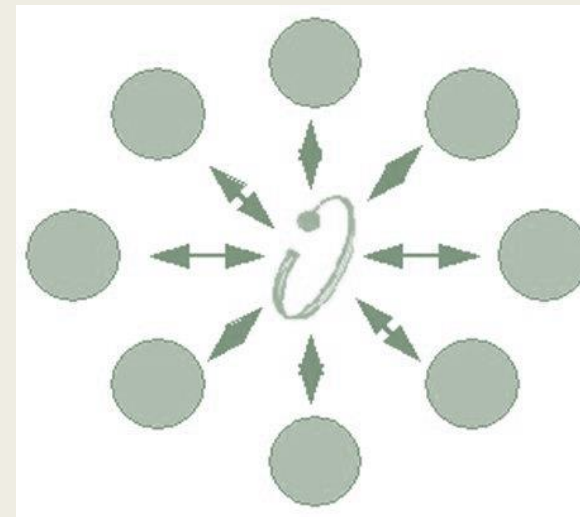
Each sharing of data...

- Creates **pressure on the source system staff** to provide the requested data; the more popular the data, the more work for the source system staff;
- Creates **pressure on the source system** itself to provide the requested data; the more popular the data, the more performance impact on the source system; and,
- Introduces **security concerns**, as once the data has been shared, tracking of how that data is used is limited or non-existent.

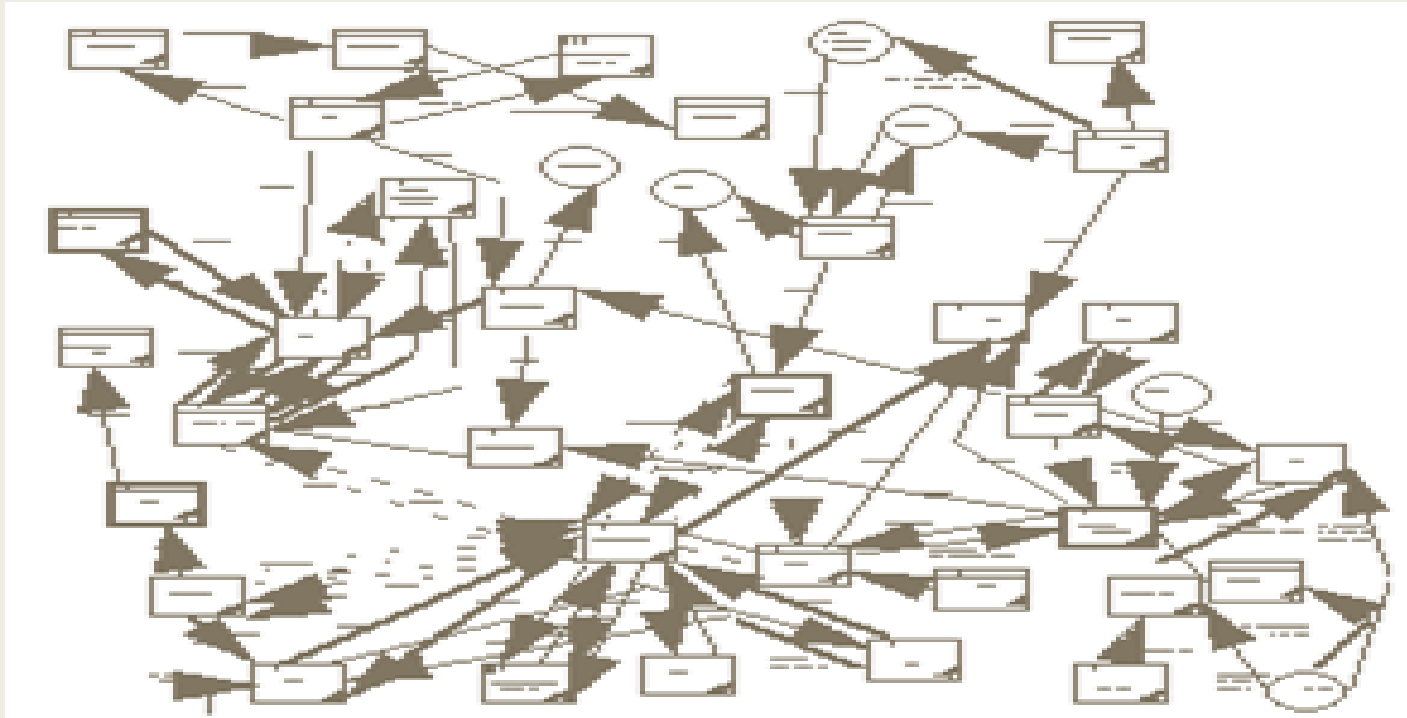


# Data Reusability Is Better!

- Data Reusability is the commitment to collecting, managing and storing data to enhance the quality, understanding and value of that data, to promote the efficient use of that data between agencies and applications, and to minimize redundancy and conflicting definitions.
- Data Reusability leads to “information sharing”, not “data sharing”.



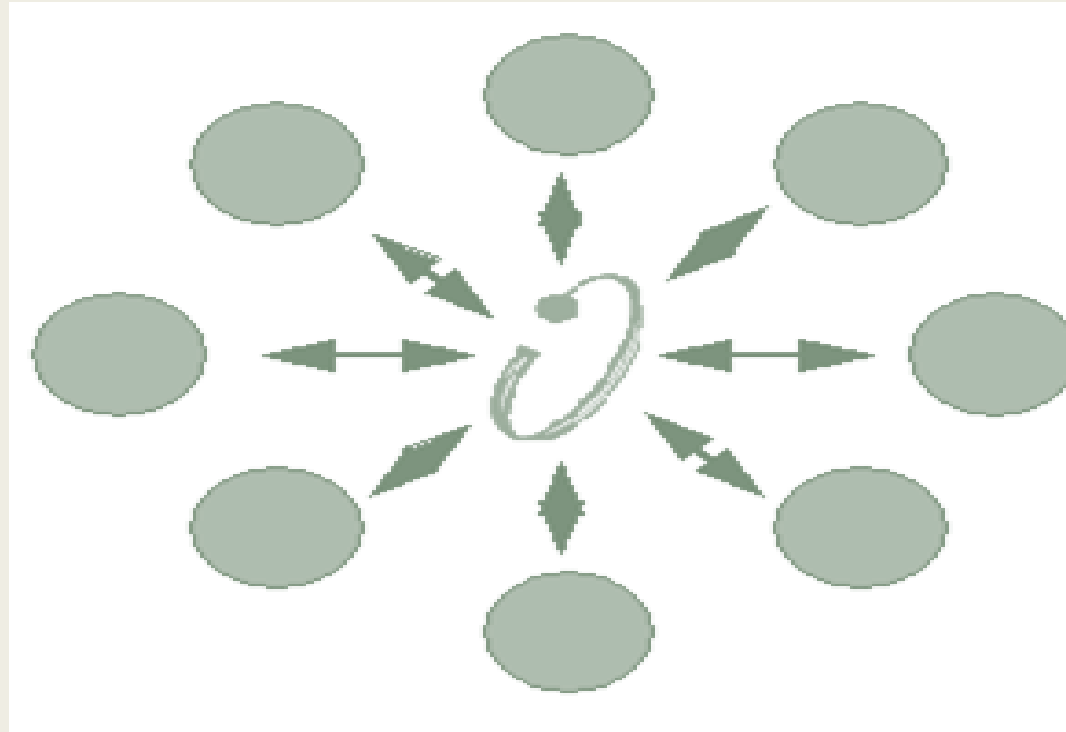
# Our Goal




**We want to get from this.....**

# Our Goal

A Hub & Spokes Design for Data Reusability



.....to this.



# DBHIDS FORENSIC 360

Utilization and Practical Applications



# Forensic 360

- Nexus of incarceration and treatment contact data.
- Able to survey thousands of individuals in a repeatable and reliable manner.
  - *Easily filter individuals who do not meet the cohort criteria.*
    - Can be filtered by any of the data points available
  - *Save and reuse the same filter or the same cohort.*
- Reports are easily updated with new data

# The Transactional Method

- Create a scope of work to include:
  - *Detailed description of the request*
  - *Data points requested*
  - *Frequency of data sharing*
- Gain executive and legal approval
- Meet with subject matter experts
- Refine requested data points
  - *Maybe seek new executive and legal approval*
- Merge and clean data
- **Begin analysis**

For Each Data Source!



# Information Sharing Framework

- MOU took two years and only allowed sharing some information in a single direction.
  - *Enhanced inmate consent form covered behavioral health and substance use PHI in both directions.*
    - Consents are signed at intake and those who do not sign are not included in the data feed.
- Focus shifts to analysis.
- Meetings become collaborative investigations.
- Discussions shift from process to outcomes.
- Information can be generated when the Business Unit *actually needs it*.

# External Utilization and Possible Applications

- Forensic 360 was originally designed for the Philadelphia Department of Prisons (PDP) mental health provider.
  - *Several initiatives incorporate the PDP SMI flag.*
    - Increasing the accuracy of the SMI flag benefits everyone!
- Probation and Parole (APPD)
  - *PO gain informed decision making when working with an individual who has a behavioral health issue and seek alternatives to violations.*
    - Connect and coordinate with active treatment providers.
- Philadelphia Police Department (PPD)
  - *Referrals to diversionary programs.*
  - *Incorporate Crisis Intervention Trained officers earlier in the process.*

# Internal Utilization

- Stepping Up Initiative
  - *Baseline analysis and 4 comparison cohorts.*
- Hi-Five
  - *Constant updating of who in the cohort was incarcerated.*
  - *Cohort expansion to include Opioid Use Disorders.*
- Initiative Outcomes
  - *Can be measured against the Stepping Up framework*

# CONTACT INFORMATION

Barbara Bunkle, PhD  
Director of Enterprise Data Services  
City of Philadelphia  
Department of Behavioral Health and  
Intellectual disAbility Services  
[barbara.bunkle@phila.gov](mailto:barbara.bunkle@phila.gov)

Kate Reed, MPsy, LPC  
Stepping Up Initiative Supervisor  
City of Philadelphia  
Department of Behavioral Health and  
Intellectual disAbility Services  
[kate.reed@phila.gov](mailto:kate.reed@phila.gov)

Charles McCrea, MHS  
Assistant Manager  
City of Philadelphia  
Department of Behavioral Health and  
Intellectual disAbility Services  
[charles.mccrea@phila.gov](mailto:charles.mccrea@phila.gov)

Danielle Walsh, Esq.  
Stepping Up Project Manager  
City of Philadelphia  
Managing Director's Office  
[danielle.walsh@phila.gov](mailto:danielle.walsh@phila.gov)

## Speaker: McLean County, Ill.



Trisha Malott  
Behavioral Health Coordinating Council  
Supervisor  
McLean County Administrator's Office



Camille Rodriguez  
County Administrator  
McLean County



# Stepping Up & Data-Driven Justice

---

MCLEAN COUNTY, ILLINOIS

# Intersection of Justice & Behavioral Health Systems

---



We wanted to improve our understanding of the existing intersection of the justice system and behavioral health systems in McLean County



We needed to establish each agency's responsibility in improving the systemic response to our mental health crises

# How? Through data-driven initiatives

---



In 2013, the National Institute of Corrections (NIC) studied McLean County's systems, noting a direct connection between deficiencies in the coordination of BH systems and the increase in jail detainees with BH issues



Since then, we have worked to address provisions for people with behavioral health issues post-arrest, with intent to decrease the number of people with mental illness who enter the criminal justice system



We want to intercept and direct people at the earliest point possible toward community treatment versus incarceration



# Data Driven Activities in McLean County

Contracting	Contracting with Illinois State University's Stevenson Center
Participating	Participating (in 2016) as a member of the White House Data Driven Justice Initiative
Entering	Entering into a data-sharing agreement with the University of Chicago's Center for Data Science and Public Policy (DSaPP)
Maintaining	Maintaining regular dialogue with the Illinois Criminal Justice Information Agency and the newly-formed Illinois Department of Innovation and Technologies (DoIT)

## Data Matching and Partnerships

We have data and we need to better understand it

- How do we best serve high utilizers of services?
- What can we do long-term if we do shift how we serve them?
- How do we identify them objectively?
  
- Corporation for Supportive Housing (CSH)
- University of Chicago
- Arnold Ventures

# Justice & Housing Data Integration Tool

---

## Partners

- Corporation for Supportive Housing (CSH)
- University of Chicago
- Arnold Ventures

## Local Data

- McLean County comprehensive justice data
- HMIS (Homeless Management Information System) data

# FUSE (Frequent Users System Engagement)

---



A proven model identifying frequent users of jails, shelters, hospitals and/or other crisis public services and then improving lives through supportive housing.



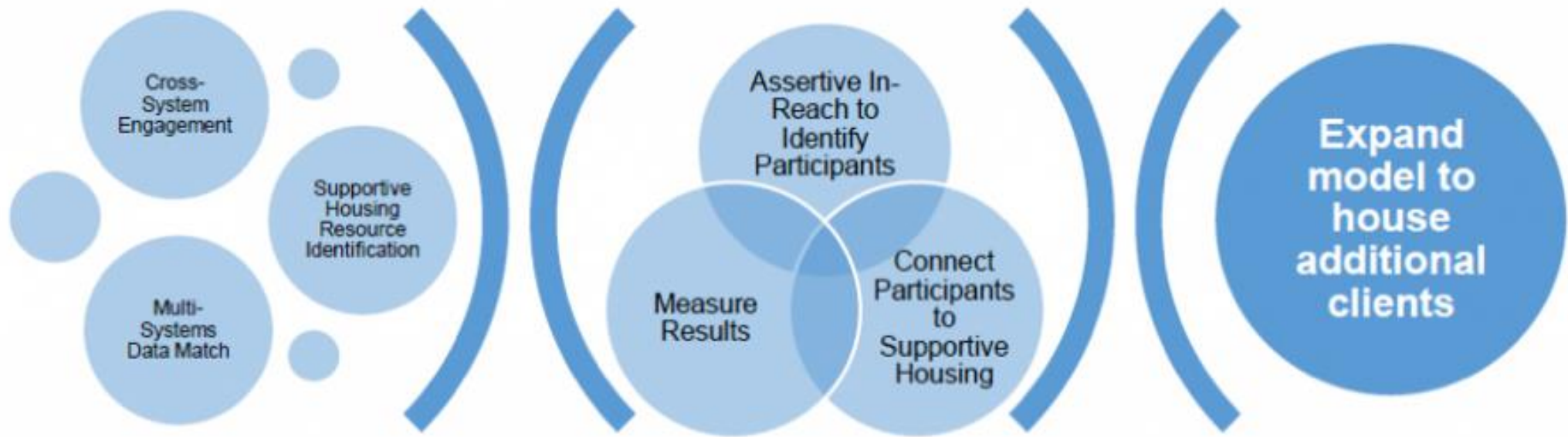
Supportive housing is an evidence-based solution that leads to better health and other good outcomes for the homeless and disabled.



Tenants receive access to affordable housing with wraparound support services, which stabilizes their lives and significantly reduces returns to jail and homelessness, reliance on emergency health services, and improves their quality of life.



FUSE varies by community



# FUSE Roadmap

---

# What Does Our Data Look Like?

Intersection of justice and homeless data

Sorted by justice identified mental health indicators

Evaluating total contacts

- Most recent shelter contact

Contacts for most recent 18 months

“Top 20”

- 8+ total justice and shelter contacts
- Most individuals are under the age of 40

# What Does Our Data Not Show?

## Health Data

- No Business Associate Agreements or Confidentiality Agreements with either local hospital
- Illinois Mental Health Statute more limiting than HIPAA
- No diagnostic information

## EMS transports

Current location for individuals

Current service involvement

# How Do We Overcome Data Challenges?

Have	Have participants sign releases/exchanges of information <ul style="list-style-type: none"><li>• Acquire health data after</li></ul>
Build	Build community partnerships to connect to possible participants
Provide	Provide referral forms to agencies and departments such as Probation
Seek	Continuously seek new ways to integrate data



# How Else Are We Meeting the Needs of the Justice Involved with Behavioral Health Concerns?



## McLean County Triage Center

24-hours, 7 days a week, 365 days per year

Walk-in facility for individuals with behavioral health crisis

Law enforcement drop-off diversion option



## Same psychiatrist for inmate psychiatric care and for FUSE Program



## Partner in NYU Criminal Justice Lab pilot project

Law enforcement screening tool for mental health, homelessness, and substance use concerns



## Bureau of Justice Assistance grant award

Establish a Comprehensive Assessment Team for youth and adolescents who have justice contact and high needs for wrap-around case planning and interventions

# Steps for Success



Get leadership “buy in”



Establish partnerships

CJCC, BHCC, JJCC



Build relationships

Funding partners  
Business leaders in community  
Research bodies/entities



Evaluate existing data

Can new data be acquired?  
What does the data tell you?



Be strategic

Think long-term  
Focus on sustainability  
Start small, if needed

# Thank you!

---

For more information and/or to visit, contact us at

Trisha Malott [Trisha.Malott@mcleancountyil.gov](mailto:Trisha.Malott@mcleancountyil.gov)

Camille Rodriguez  
[Camille.Rodriguez@mcleancountyil.gov](mailto:Camille.Rodriguez@mcleancountyil.gov)



McLean County Administration  
115 East Washington Street, Room 401  
Bloomington, IL 61702

The background of the slide features a faded, light gray American flag with stars and stripes, positioned behind the central text.

**| Questions?**

The background of the slide features a faded, light gray American flag with stars and stripes, positioned behind the main text.

# | Polling Questions

# **| Upcoming Events**

**Using Data to Identify and Serve People who Frequently Utilize Health, Human Services and Justice Systems**

**December 5<sup>th</sup>, 2-3:15pm ET**

[www.stepuptogether.org/toolkit](http://www.stepuptogether.org/toolkit)

[www.naco.org/events/data-driven-justice](http://www.naco.org/events/data-driven-justice)

# Contact Information

For questions about Stepping Up:

Nastassia Walsh, MA  
Associate Program Director for Justice  
National Association of Counties  
E: [nwalsh@naco.org](mailto:nwalsh@naco.org)  
P: 202.942.4289

Risë Haneberg, MPA  
Deputy Division Director, County Initiatives  
Council of State Governments Justice Center  
E: [rhaneberg@csg.org](mailto:rhaneberg@csg.org)  
P: 941.251.7175

Christopher Seeley, M.S.W.  
Program Director, School and Justice Initiatives  
American Psychiatric Association Foundation  
E: [cseeley@psych.org](mailto:cseeley@psych.org)  
P: 703.907.7861

For questions about Data-Driven Justice:

Sharon Ondeje  
Program Manager, Justice  
National Association of Counties  
E: [sondeje@naco.org](mailto:sondeje@naco.org)  
P: 202.661.8868