

NACo WEBINAR PANEL DISCUSSION

How can we build a justice system that works for everyone?

A post-pandemic legacy

Stronger Counties. Stronger America.



Meet the panel



**Nastassia
Walsh**

Associate
Program Director
for Community
Health and
Justice, National
Association of
Counties

HOST



**Karen
Gorham**

Superior Court
Administrator,
New Hampshire
Judicial Branch



**Tamara
Pogue**

Commissioner,
Summit County,
Colorado



**Samuel A.
Thumma**

Judge, Arizona
Court of Appeals



**Selen
Ustun**

Director,
Partnerships and
Alliances,
Thomson Reuters

Panel discussion



1.

Public confidence
in a healthy county
ecosystem



2.

A paradigm shift:
The court as a
service, not a
building



3.

Smoother working
practices among
agencies



4.

Targeted, timely
action for long-
term results



Stronger Counties. Stronger America.

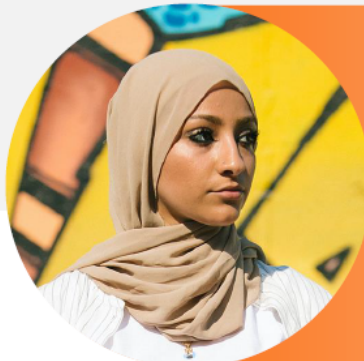


Our Purpose



OUR REASON FOR BEING

At Thomson Reuters, our purpose is to **inform the way forward** to a more understanding, trusting world for all.



Justice, Truth and Transparency



Together with the professionals and institutions we serve, we help uphold the rule of law, turn the wheels of commerce, catch bad actors, report the facts, and provide trusted, unbiased information to people all over the world.

Our role at Thomson Reuters is to serve our customers, pursuing justice, truth, and transparency.

**INFORM
THE WAY
FORWARD** ●





Stronger Counties. Stronger America.



Why SMART? An Overview

SMART Responds to public safety calls throughout Summit County that involve an individual experiencing a mental health crisis.

SMART provides all aspects of mental health crisis stabilization on-scene, with a desired outcome of diverting individuals from costly and disruptive facilities like emergency rooms.

Tamara Pogue
Summit County Commissioner

Solving the Cost of a Crisis

Current Costs of a Crisis in Summit County

Law Response (2+ Hrs)	\$75/hr
Fire Response (1hr)	\$300/hr
EMS (1hr)	\$200/hr
Ambulance	\$2,000+
ER Hospitalization	\$7,100
Facility Placement	\$21,000
Outpatient Sessions (6)	\$100/hr
Criminal Justice System	\$5,000

Total Cost: \$35,350 per crisis

Tamara Pogue
Summit County Commissioner

Solving the Cost of a Crisis

SMART: Less Disruptive and Lower Cost

Law Response (1/2 hr)	\$38
SMART Response (4 hrs)	\$125/hr
Outpatient Sessions (6)	\$100/hr

Total Cost: \$1138 per crisis

Benefit:

Clients are connected with treatment providers, leading to significant savings in community resources and cost to client

Tamara Pogue
Summit County Commissioner

Solving the Cost of a Crisis



Stronger Counties. Stronger America.

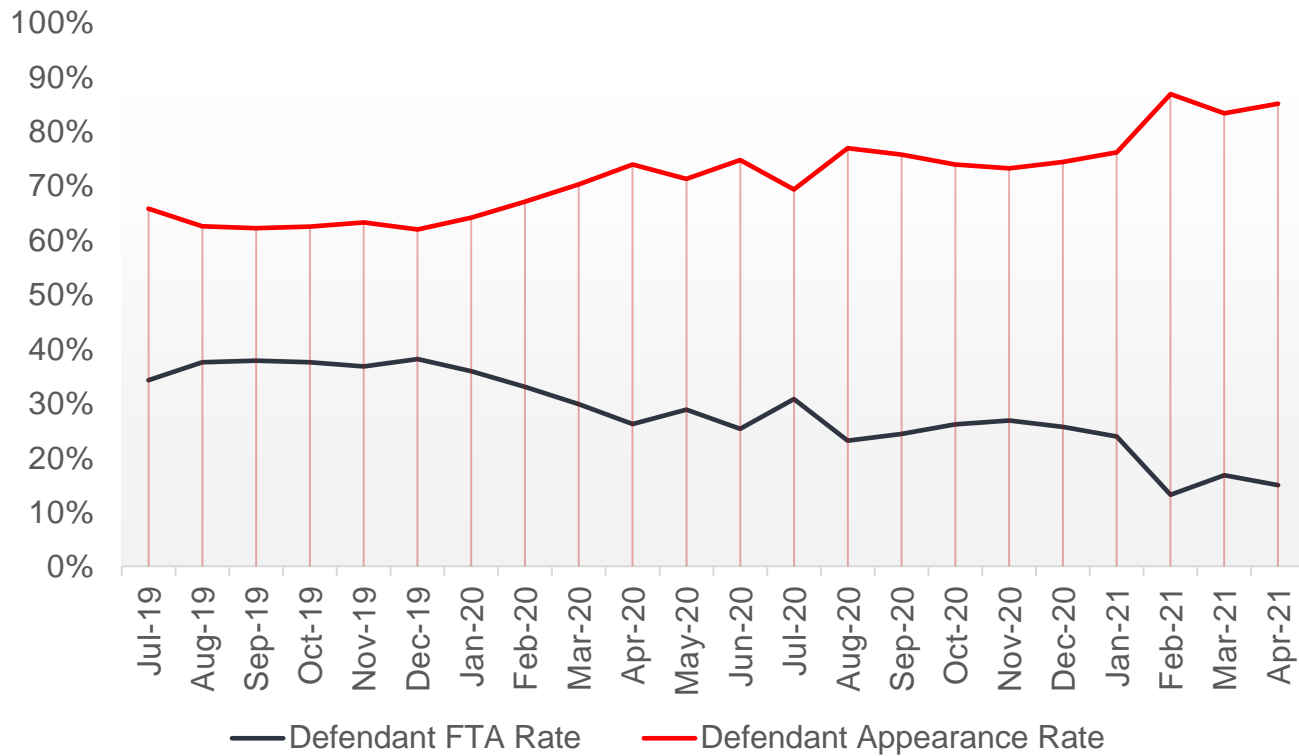


Arizona's Post-Pandemic Vision

- “To the extent possible, we should be seeing the court as a service and not a location.”
- “Litigants like [being able to appear remotely] because it reduces cost for travel time and time off work. Attorneys like it because it reduces the problems associated with having to be in multiple courts on any given morning.”
- “Excellent opportunity to dramatically expand access to justice!”
- “We cannot and should not bring back hearings to in-person just because that’s always how we’ve done things.”

Post-pandemic Recommendations: COVID-19 Continuity of Court Operations During a Public Health Emergency Workgroup, 75 SMU LAW REVIEW FORUM 1 (Jan. 2022) <https://smulawjournals.org/smulrforum/>

Defendant Appearance Rates in Evictions Actions Maricopa County Justice Courts



Access to Justice:

Change in Appearance Rates When Remote Appearances Are Allowed



Stronger Counties. Stronger America.



Thank you



THOMSON REUTERS

NACo gratefully acknowledges Thomson Reuters for
its support in delivering this webinar.

Stronger Counties. Stronger America.

