



Leveraging New County Health Rankings Data to Improve Community Health

April 19, 2023

NATIONAL
ASSOCIATION
of COUNTIES

NACo



County Health
Rankings & Roadmaps

Building a Culture of Health, County by County

COUNTY HEALTH RANKINGS

April 19, 2023

countyhealthrankings.org



Support
provided by



Robert Wood Johnson
Foundation

County Health Rankings & Roadmaps

Building a Culture of Health, County by County



Kiersten Frobom

Senior Evidence
Analyst
CHR&R



Molly Burdine

Data Analyst
CHR&R

GROWING COMMUNITY POWER TO IMPROVE HEALTH EQUITY





Demographics

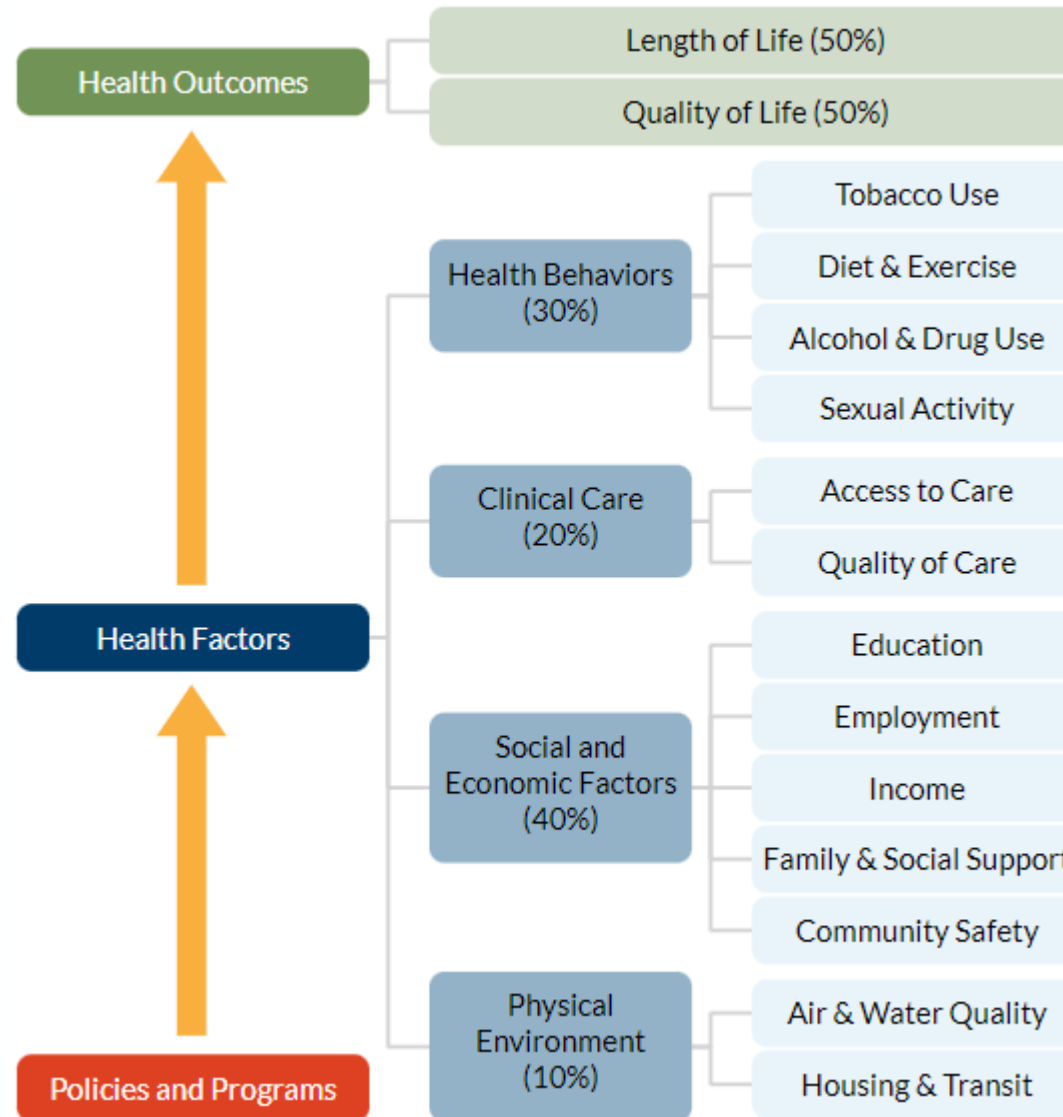
What we know about the community

Health Outcomes

How long and how well people live

Health Factors

- ▶ Health behaviors
- ▶ Clinical care
- ▶ Social and economic
- ▶ Physical environment



A close-up photograph of a person with dark skin, wearing an orange t-shirt, shouting into a white megaphone with a red rim. The person's mouth is wide open, showing their teeth. The megaphone has a black strap and a small orange circle on its side. The background is a blurred outdoor setting.

2023 RANKINGS

CULTIVATING CIVIC
INFRASTRUCTURE
& PARTICIPATION FOR
HEALTHIER
COMMUNITIES

Civic Infrastructure Creates Opportunities for Civic Participation

Civic health starts in our local communities and is the cornerstone of our democracy, representing promise, opportunity, belonging and shared responsibility.



Civic Spaces to Connect, Learn & Collectively Act

Civic spaces include parks, libraries, schools, community centers, sidewalks, public transportation and the internet. Civic spaces are where we gather, connect and organize. Town hall meetings, community events and protests often take place in civic spaces.

Civic spaces are also where we learn, stay informed, get connected and come to understand how decisions are made so that we can advocate for our community's needs. Schools, libraries and community centers are civic spaces that often offer civic education, leadership programs, service learning and access to information. Information comes through local newspapers and other virtual and physical news outlets, virtual forums or social media, all of which help us understand how decisions are made and what is happening locally.

Governance & Resources

How we govern determines who has a say, what is prioritized and how resources are allocated. Components of governance include voter registration laws, redistricting, commissions, open meetings, community advisory boards and their processes such as participatory budgeting and investment procedures from community and economic development organizations. Policies, laws, ordinances and practices determine how easy it is to participate in civic life and for whom, as well as how resources are invested in civic infrastructure to support participation.

Social Networks & Shared Culture

We can use our power in many ways to achieve common goals. Volunteering, joining a social group and helping neighbors connects us, fosters belonging and supports a shared purpose.

Cultivating Civic Infrastructure & Participation for Healthier Communities

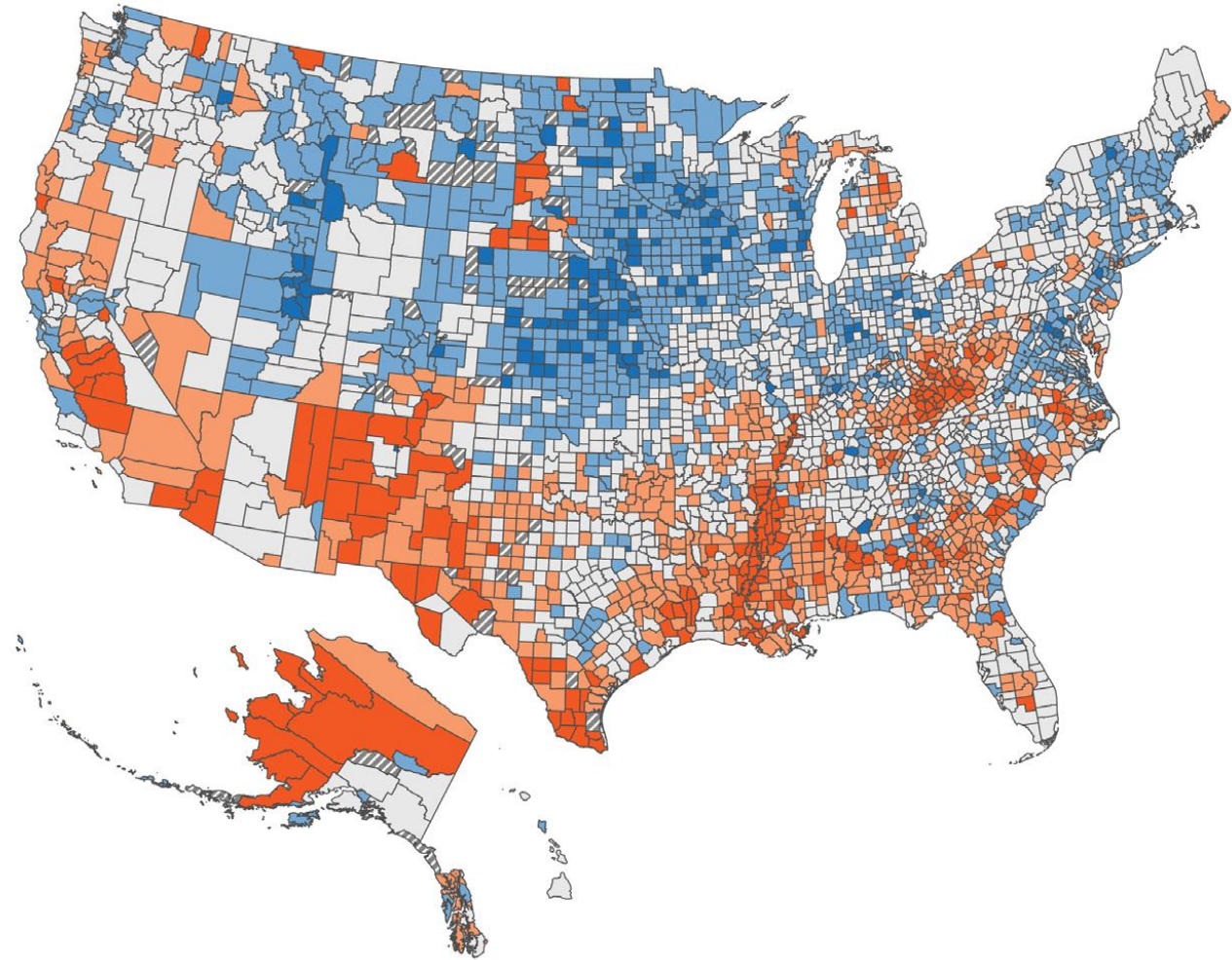
Key Findings

Variation in Socioeconomic Opportunity Among U.S. Counties

Civic infrastructure and the opportunity to live long and well varies across U.S. counties.

Opportunities through:

- Education
- Employment
- Income
- Family and Social Support



Social & Economic Health Factors



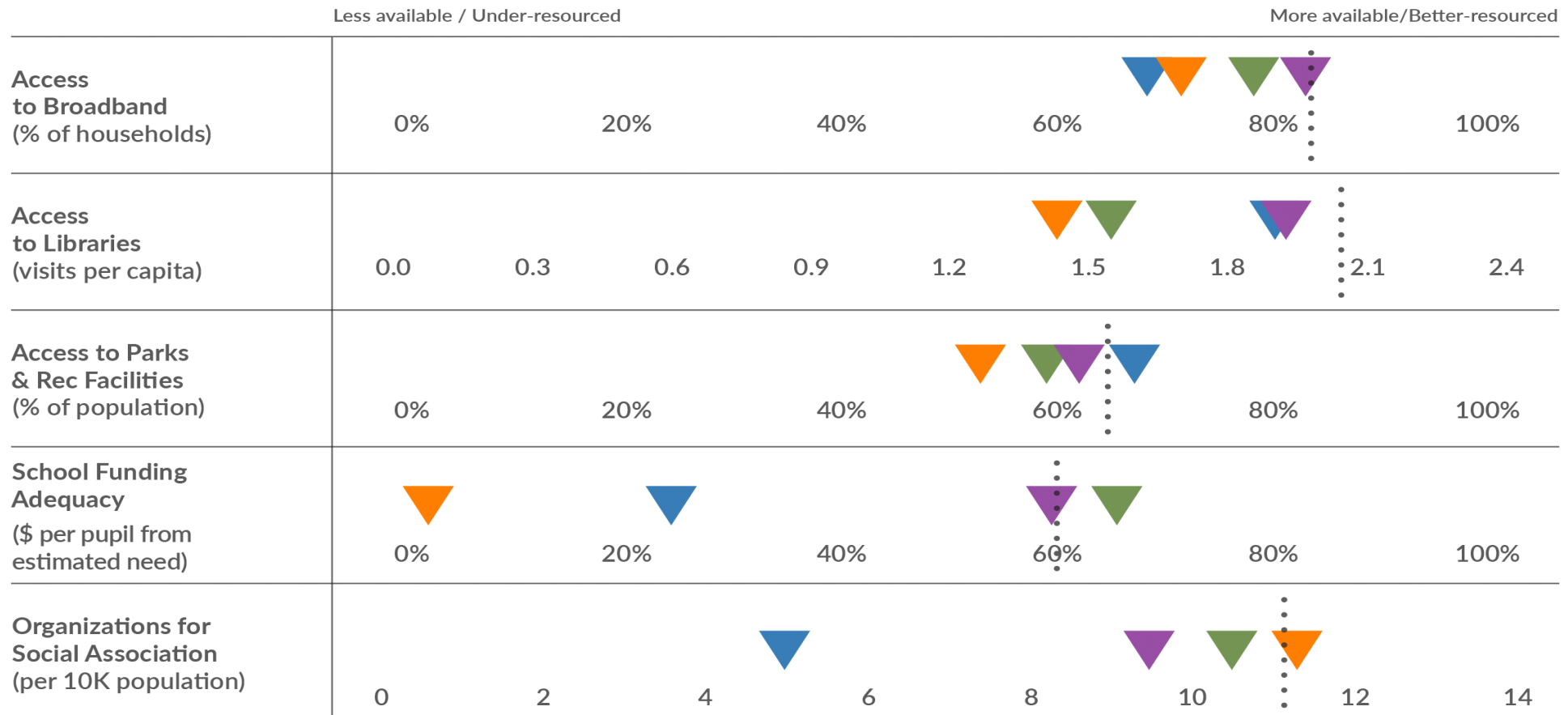
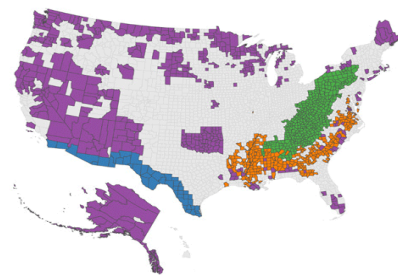
Better

Worse

Missing

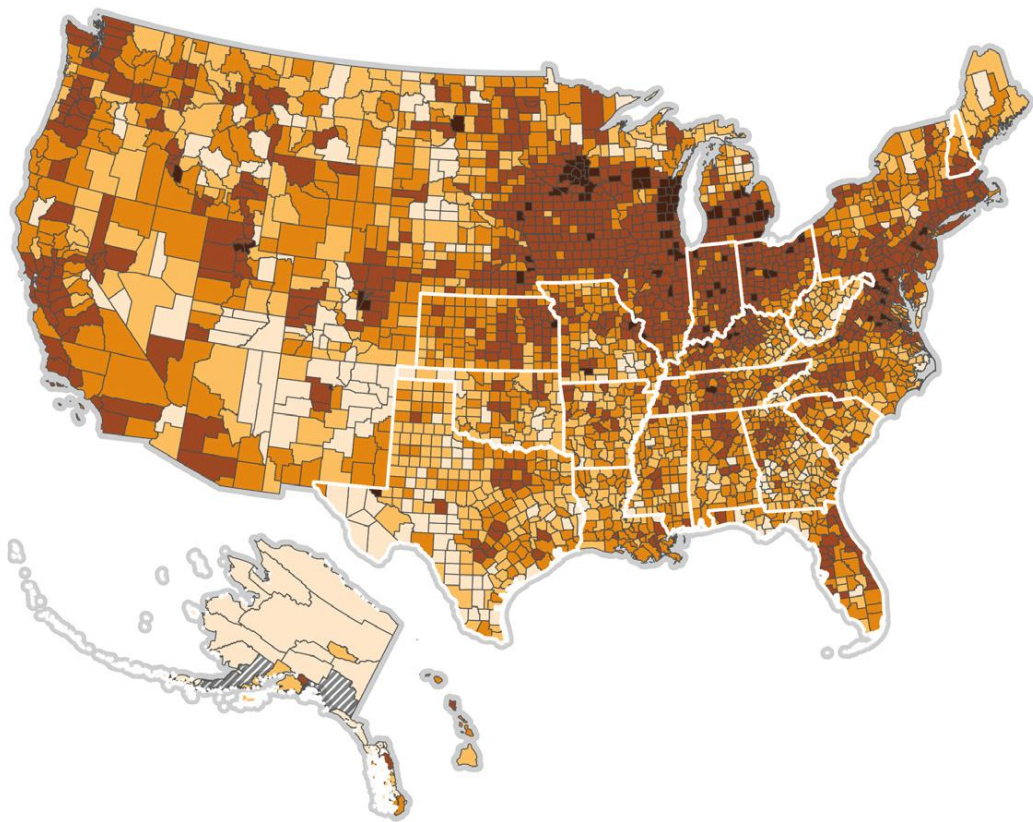
Data source: 2023 CHR&R Social & Economic Factors

Variations in Measures of Civic Infrastructure Among Regions with Types of Long-standing Discrimination and Disinvestment



Data sources: American Community Survey; Public Libraries Survey; Environmental Public Health Tracking Network; School Financial Indicators Database; County Business Patterns

Census Participation Across U.S. Counties and Among States with More Barriers to Civic Health

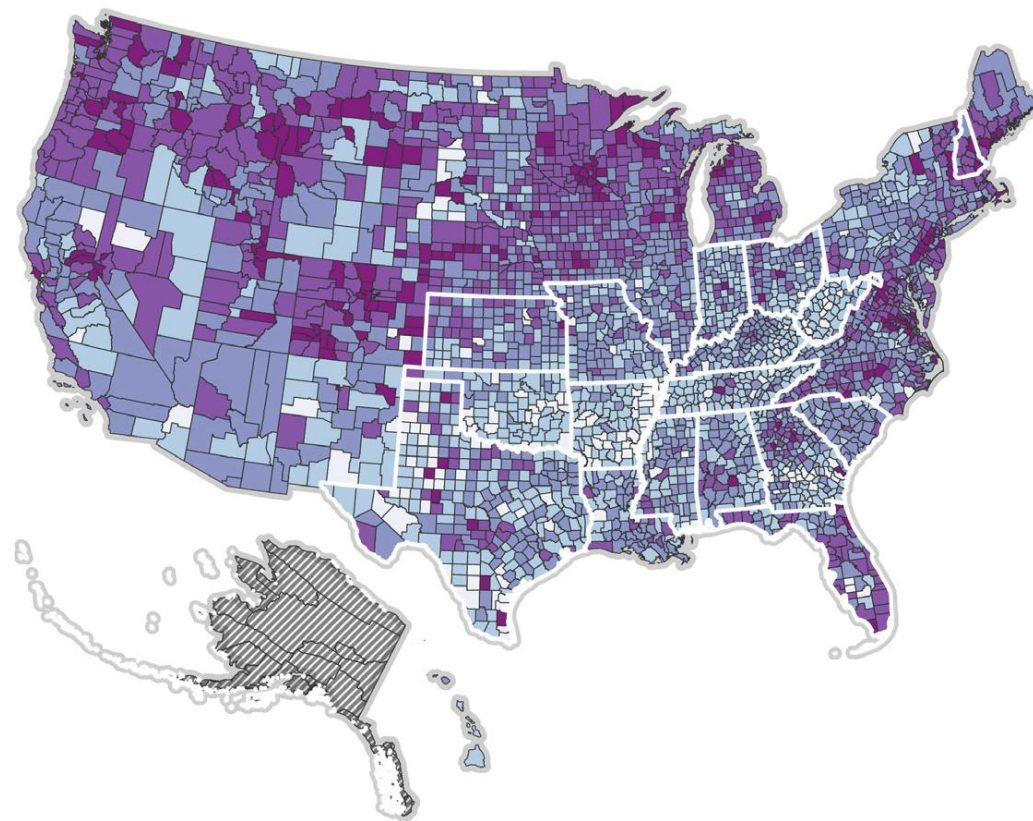


Percentage of all households that self-responded to the 2020 Census (%)

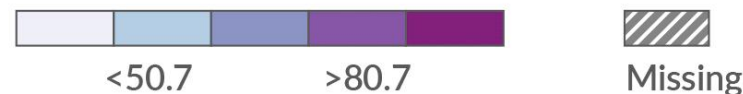


Data source: 2023 CHR&R Social & Economic Factors

Voter Turnout Across U.S. Counties and Among States with More Structural Barriers to Civic Health



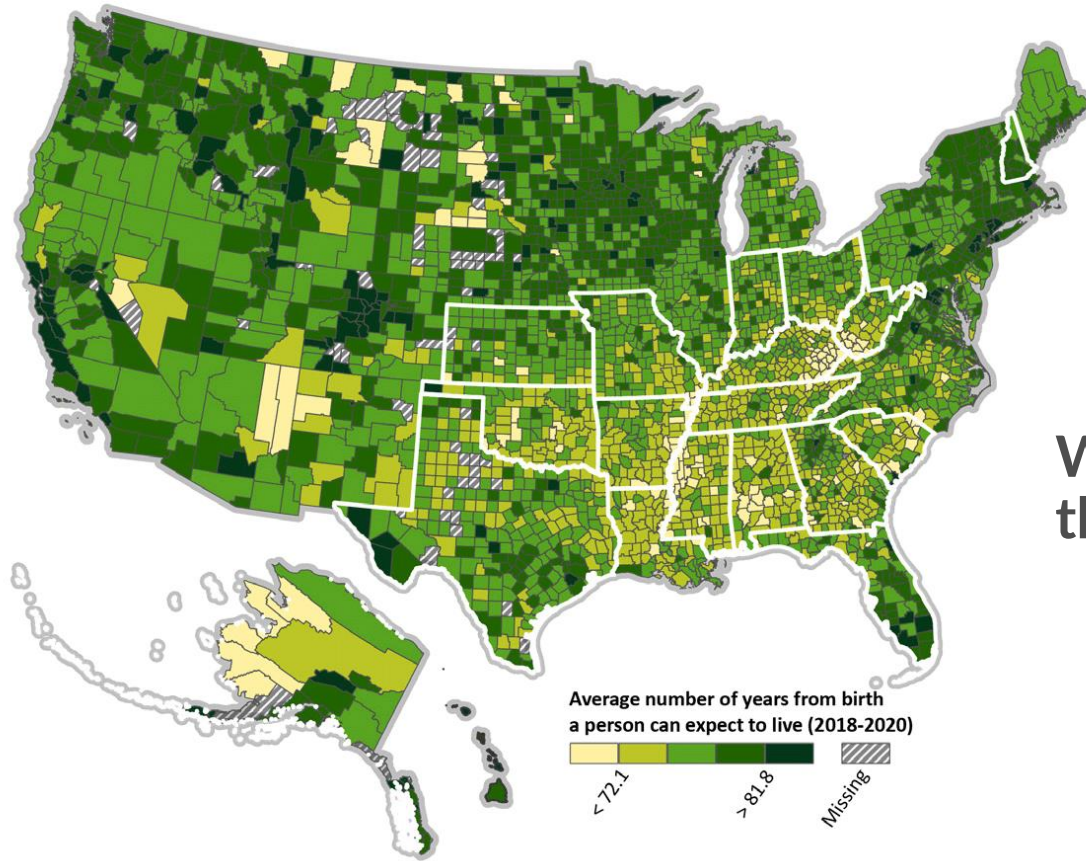
Percentage of citizen population aged 18 or older who voted in the 2020 U.S. Presidential election (%)



Data source: 2023 CHR&R Social & Economic Factors

**Areas with well-resourced civic infrastructure have more civic participation.
Both are tied to how well and how long we live.**

Life Expectancy Across U.S. Counties and Among States with More Structural Barriers to Civic Health



A familiar geographic pattern.

Where there are structural barriers to civic health, these overlap with:

signs of diminished civic participation, fewer social and economic opportunities, and worse health outcomes.

Average number of years from birth a person can expect to live (2018-2020)



<72.1

>81.8

Missing



What's new in 2023?

- Updated Rankings
- Improved Website Features
- New Measures
- New What Works for Health Strategies

2023 NEW MEASURE

Census Participation

Influences the distribution of power through government representation, allocation of resources, and public health planning.

Definition:

Percentage of all households that self-responded to the 2020 census (by internet, paper questionnaire or telephone)

Data Source:

U.S. Census Bureau, Census Operational Quality Metrics



2023 NEW MEASURE

Voter Turnout

Communities that vote more tend to be healthier, and healthier communities vote more.

Definition: Percentage of citizen population aged 18 or older who voted in the 2020 U.S. presidential election.

Data Source: MIT Election Data and Science Lab; American Community Survey



PLEASE NOTE:

Measures using same data as 2022 Rankings:

- Premature Death (YPLL)
- Premature Age-Adjusted Mortality
- Life Expectancy
- Child Mortality
- Infant Mortality
- Homicides
- Suicides
- Injury Deaths
- Teen Births
- Low Birthweight

PLEASE NOTE:

Measures retired in 2023:

- Violent Crime (*ranked measure*)
- Residential Segregation - (White/non-White)
- COVID-19 Age-Adjusted Mortality

Explore Health Rankings

The annual Rankings provide a revealing snapshot of how health is influenced by where we live, learn, work, and play. They provide a starting point for change in communities.

Find Data by Location

Search by county, state or ZIP code

[Search](#)

Find Data by Topic

Explore measures within our model of health



[Explore](#)

Find Data Sets and Documentation: [Download state and national data sets](#)

[Downloads](#)

Children in Poverty



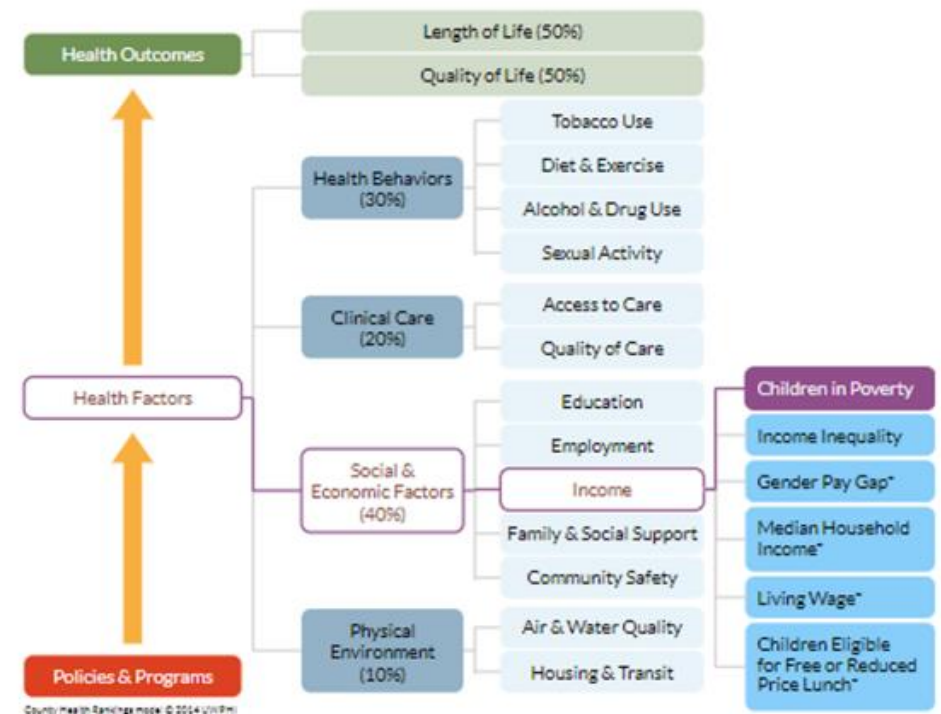
[An Income measure](#)

About

Percentage of people under age 18 in poverty. The 2023 County Health Rankings used data from 2021 for this measure.

Children in Poverty captures an upstream measure of poverty that assesses both current and future health risk. Poverty and other social factors contribute a number of deaths comparable to leading causes of death in the United States like heart attacks, strokes, and lung cancer.¹ While repercussions resulting from poverty are present at all ages, children in poverty may experience lasting effects on academic achievement, health, and income into adulthood. Children living in low-income households have an increased risk of injury as a result of unsafe environments and are susceptible to more frequent and severe chronic conditions and their complications, such as asthma, obesity, diabetes, ADHD, behavior disorders, and anxiety, than children living in high income households.²⁻⁴

[Find strategies to address Children in Poverty](#)



County Health Rankings Model

Use County Health Rankings' model of health to explore the measures that influence how long and how well we live. Select a measure in the diagram or [browse the list of all measures](#).

COUNTY

Madison, AL

2022 | v

Search by county, state or ZIP code

Search

Go

Rank #4 of 67 counties in [Alabama](#)

[Download Alabama data sets](#)

Health Outcomes

Health outcomes represent how healthy a county is right now, in terms of length of life but quality of life as well.

Madison (MD) is ranked among the healthiest counties in Alabama (Highest 75%-100%).




Health Factors




Health Factors represent those things we can modify to improve the length and quality of life for residents.

Madison (MD) is ranked among the healthiest counties in Alabama (Highest 75%-100%).






County Snapshot

Show areas to explore Show areas of strength  Trends Available

Health Outcomes					
Length of Life		Madison (MD) County	Alabama	United States	—
Premature Death		8,400	10,400	7,300	∨
Quality of Life		Madison (MD) County	Alabama	United States	—
Poor or Fair Health		18%	21%	17%	∨
Poor Physical Health Days		4.0	4.8	3.9	∨
Poor Mental Health Days		4.9	5.6	4.5	∨
Low Birthweight		10%	10%	8%	∨
Additional Health Outcomes (not included in overall ranking)					+
Health Factors					
Health Behaviors		Madison (MD) County	Alabama	United States	—
Adult Smoking		16%	21%	16%	∨
Adult Obesity		33%	36%	32%	∨
Food Environment Index		7.4	5.3	7.8	∨
Physical Inactivity		28%	31%	26%	∨
Access to Exercise Opportunities		68%	57%	80%	∨
Excessive Drinking		18%	15%	20%	∨
Alcohol-Impaired Driving Deaths		33%	26%	27%	∨
Sexually Transmitted Infections		762.9	636.9	551.0	∨

County Health Rankings & Roadmaps

Building a Culture of Health, County by County

High School Completion		92%	87%	89%	▼
Some College		75%	62%	67%	▼
Unemployment		4.6%	5.9%	8.1%	▼
Children in Poverty		14%	21%	16%	▲

County Health Rankings & Roadmaps

Building a Culture of Health, County by County

High School Completion	92%	87%	89%	▼
Some College	75%	62%	67%	▼
Unemployment	4.6%	5.9%	8.1%	▼
Children in Poverty	14%	21%	16%	▲

Percentage of people under age 18 in poverty.
 In Madison County, Alabama, 14% of children lived in poverty.
 Error margin: 9-18%
 Years of data used: 2020

- Learn more about this measure's [methods and limitations](#).
- [Find strategies](#) to address Children in poverty.
- [View map](#) of children in poverty in Alabama counties.

Disaggregation

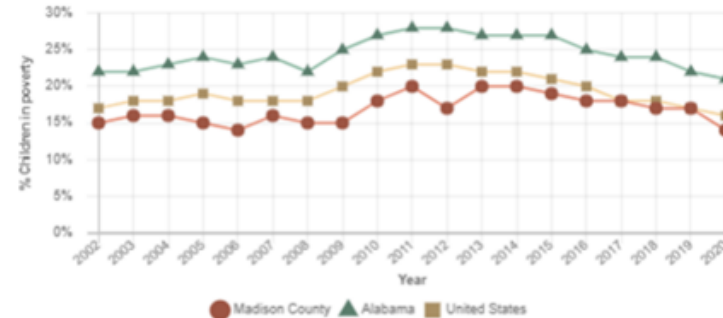
Disaggregated by Race	Value	Error Margin
% Children in Poverty	14%	9-18%
American Indian & Alaska Native	4%	
Asian	1%	
Black	31%	
Hispanic	37%	
White	7%	

Trends

Download

Children in poverty in Madison County, AL County, state and national trends

No significant long term trend was found in Madison County for this measure. However, in recent years the trend has improved.



County Health Rankings & Roadmaps

Building a Culture of Health, County by County

High School Completion	92%	87%	89%	▼
Some College	75%	62%	67%	▼
Unemployment	4.6%	5.9%	8.1%	▼
Children in Poverty	14%	21%	16%	▲

Percentage of people under age 18 in poverty.
 In Madison County, Alabama, 14% of children lived in poverty.
 Error margin: 9-18%
 Years of data used: 2020

- Learn more about this measure's [methods and limitations](#).
- [Find strategies](#) to address Children in poverty.
- [View map](#) of children in poverty in Alabama counties.

Disaggregation

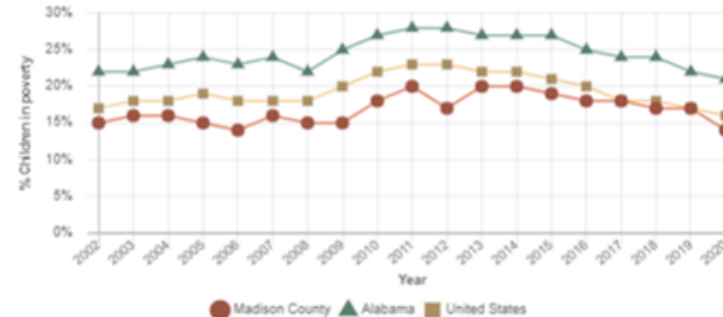
Disaggregated by Race	Value	Error Margin
% Children in Poverty	14%	9-18%
American Indian & Alaska Native	4%	
Asian	1%	
Black	31%	
Hispanic	37%	
White	7%	

Trends

Download

Children in poverty in Madison County, AL County, state and national trends

No significant long term trend was found in Madison County for this measure. However, in recent years the trend has improved.



County Health Rankings & Roadmaps

Building a Culture of Health, County by County

High School Completion	92%	87%	89%	▼
Some College	75%	62%	67%	▼
Unemployment	4.6%	5.9%	8.1%	▼
Children in Poverty	14%	21%	16%	▲

Percentage of people under age 18 in poverty.
 In Madison County, Alabama, 14% of children lived in poverty.
 Error margin: 9-18%
 Years of data used: 2020

- Learn more about this measure's [methods and limitations](#).
- [Find strategies](#) to address Children in poverty.
- [View map](#) of children in poverty in Alabama counties.

Disaggregation

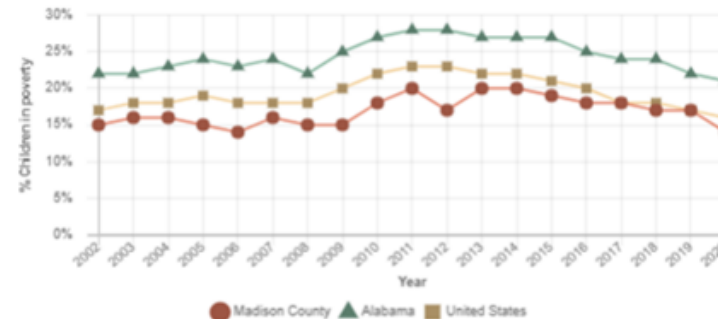
Disaggregated by Race	Value	Error Margin
% Children in Poverty	14%	9-18%
American Indian & Alaska Native	4%	
Asian	1%	
Black	31%	
Hispanic	37%	
White	7%	

Trends

Download

Children in poverty in Madison County, AL County, state and national trends

No significant long term trend was found in Madison County for this measure. However, in recent years the trend has improved.



STATE

Alabama 2022

Search by county, state or ZIP code

Search

Go

[Download Alabama data sets](#)

Data by County

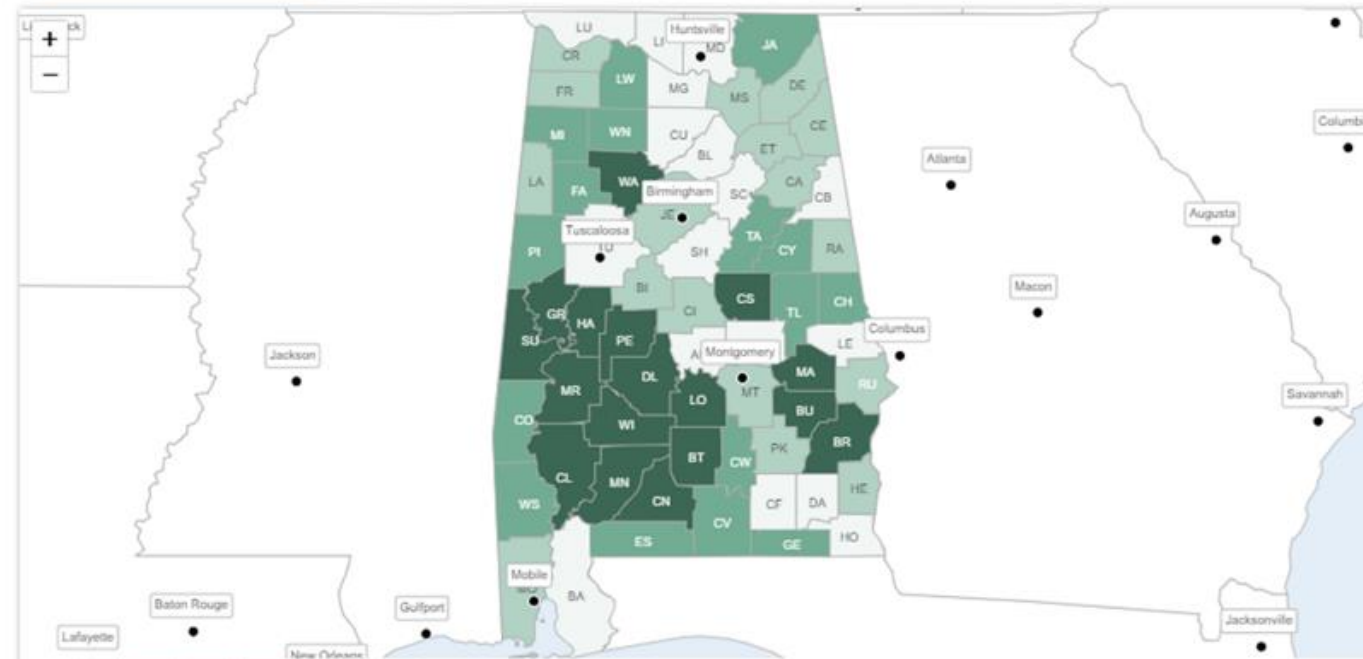
Select a topic below to explore the health of counties across Alabama or view [County Health Rankings Model](#).

Health Outcomes

Health Outcomes represent how healthy a county is right now. They reflect the physical and mental well-being of residents within a community through measures representing not only the length of life but quality of life as well.

Map

Rankings



Compare Counties

Select from all counties or choose based on demographic, social and economic indicators.



Print

Select year: 2023 | v

To add any additional locations, an existing selection will need to be removed.

Ranked

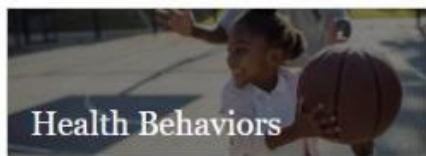
Additional

	Madison, AL <input type="checkbox"/>	Alachua, FL <input type="checkbox"/>	Chatham, GA <input type="checkbox"/>	Guilford, NC <input type="checkbox"/>	
Health Outcomes					
Length of Life	Madison, AL	Alachua, FL	Chatham, GA	Guilford, NC	—
Premature Death <input type="checkbox"/>	8,400	7,300	8,500	8,200	v
Quality of Life	Madison, AL	Alachua, FL	Chatham, GA	Guilford, NC	—
Poor or Fair Health	15%	15%	15%	13%	v
Poor Physical Health Days	3.1	3.6	3.5	2.9	v
Poor Mental Health Days	4.8	5.3	4.8	4.3	v
Low Birth Weight	10%	10%	10%	10%	v

What Works for Health

Evidence matters. Our What Works for Health tool will help you find policies and programs that are a good fit for your community's priorities.

Find Strategies by Topic



Health Behaviors

- [Alcohol and Drug Use](#)
- [Diet and Exercise](#)
- [Sexual Activity](#)
- [Tobacco Use](#)



Clinical Care

- [Access to Care](#)
- [Quality of Care](#)



Social & Economic Factors

- [Community Safety](#)
- [Education](#)
- [Employment](#)
- [Family and Social Support](#)
- [Income](#)



Physical Environment

- [Air and Water Quality](#)
- [Housing and Transit](#)

New and updated strategies



**Civic Spaces to Connect, Learn
& Collectively Act**

New and updated strategies



Governance & Resources

New and updated strategies



**Social Networks & Shared
Culture**



Katy Smith

Greater Good
Greenville

GREENVILLE COUNTY, S.C.





[SIMPLE CIVICS: GREENVILLE COUNTY](#)

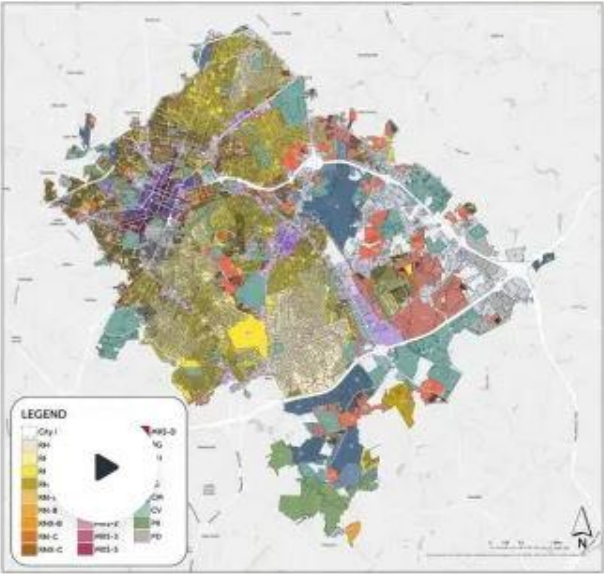
An Inside Look at Greenville County's \$650 Million Budget Process with Finance Committee Chairman Butch Kirven



[SIMPLE CIVICS: GREENVILLE COUNTY](#)

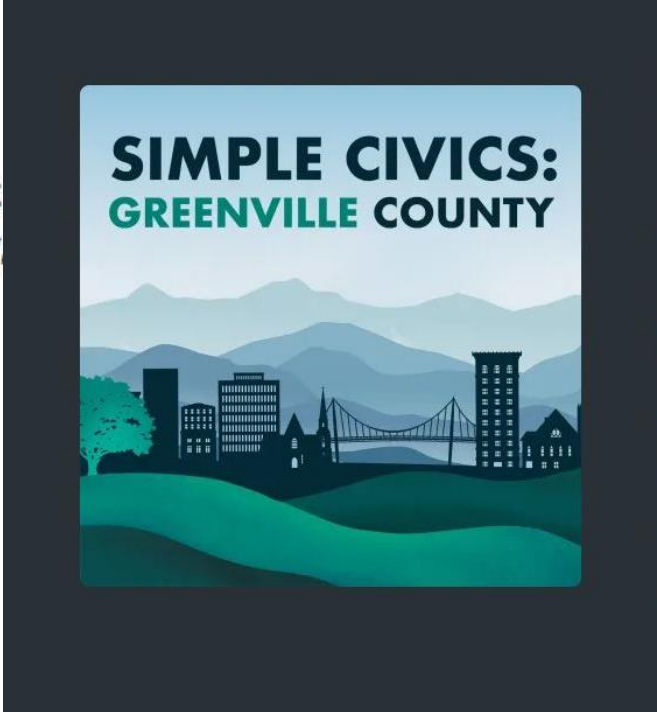
Parliamentary procedure is exciting! – and supports decision making

PROPOSED ZONING 01/23/2023



[SIMPLE CIVICS: GREENVILLE COUNTY](#)

Exploring the New Greenville Development Code: Understanding How it Will Impact Your Community Neighborhood, and Greenville





#CountyHealth



Leveraging Data to Improve Community Health in Waukesha County

Discussing Waukesha County's use of the rankings report to inform focus areas and strategies for the Community Health Assessment and Improvement Plan



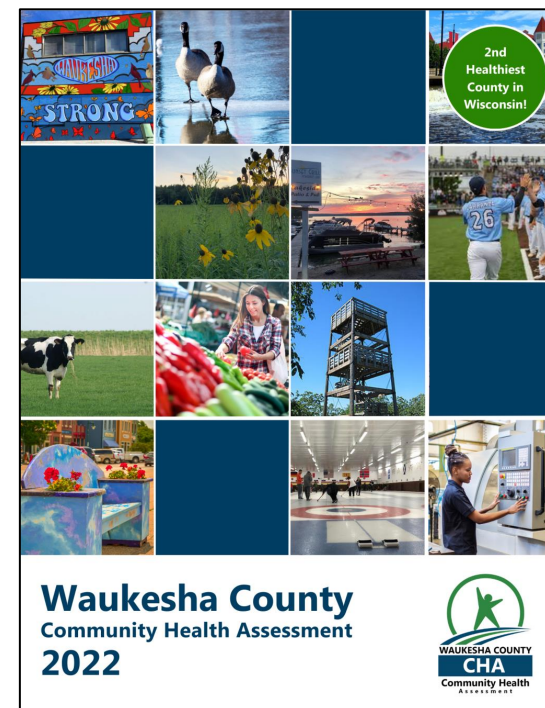


Frances Thomas

Public Health Strategy Supervisor

Waukesha County Health and Human Services

Fthomas@waukeshacounty.gov



About Waukesha County

408,756
Total Population

White alone: 91.8%

Black or African American alone: 2.0%

American Indian and Alaska Native alone: 0.3%

Asian alone: 4.1%

Native Hawaiian and Other Pacific Islander alone: 0.1%

Two or more races: 1.8%

Hispanic or Latino: 5.3%

White alone, not Hispanic or Latino: 87.0%

**Ranked the 2nd
healthiest county
in Wisconsin!**



The County Health Rankings data helps us tell the story of health in Waukesha County

County Health Rankings & Roadmaps

Building a Culture of Health, County by County

\$49.34

Living Wage

The hourly wage needed to cover basic household expenses plus all relevant taxes for a household of one adult and two children

Voter Turnout
87.1%

(US: 67.9%)

Median Household Income

\$94,500

(US: \$69,700)

AIAN: \$90,800
Asian: \$131,300
Black: \$57,900
Hispanic: \$81,100
White: \$94,200

High School Degree or Higher

96%

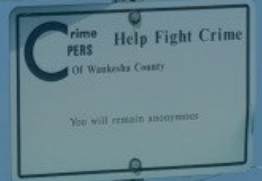
(US: 87%)

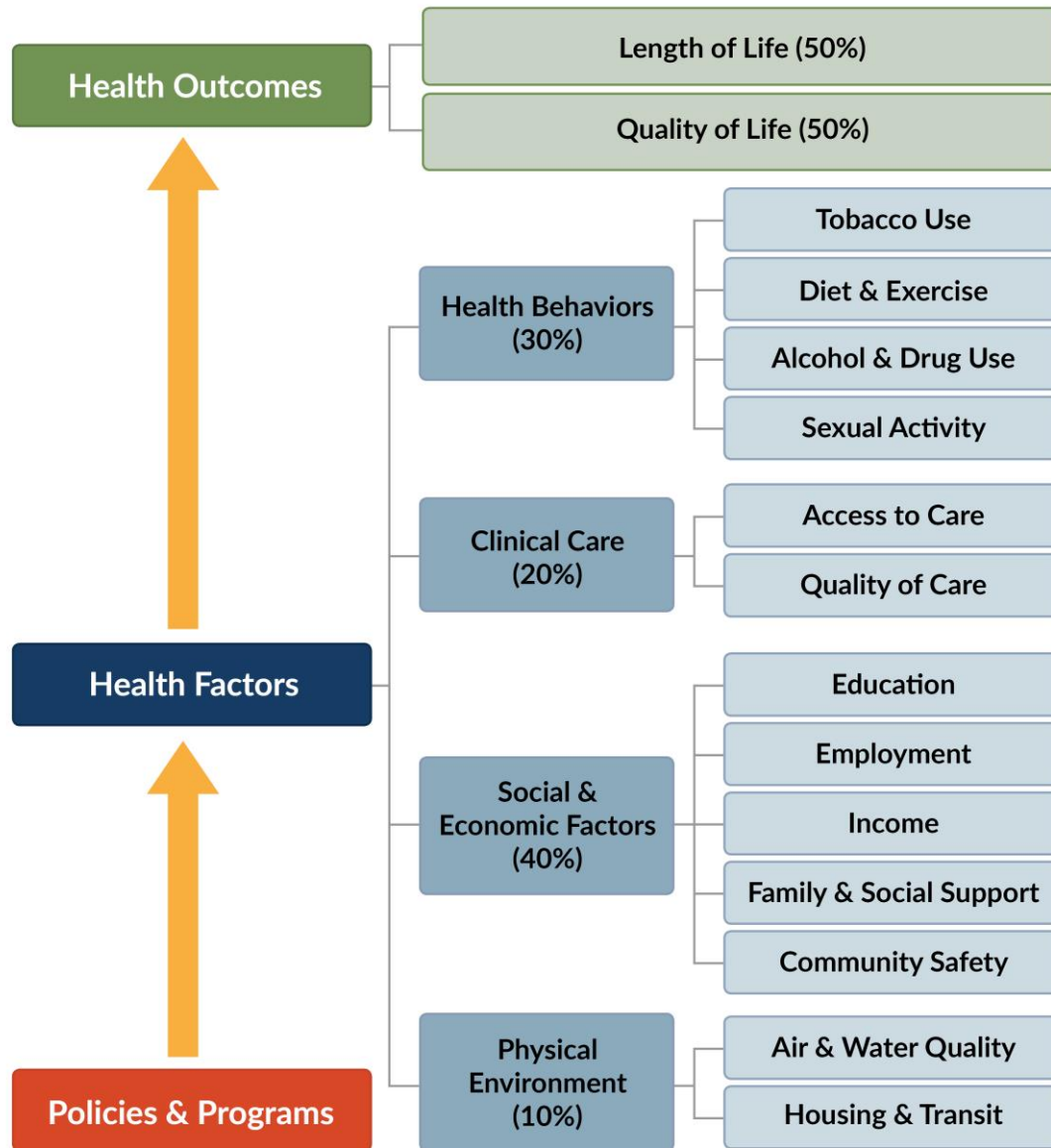
5%

Children in Poverty

Asian: 1%
Black: 24%
Hispanic: 18%
White: 5%

(County Health Rankings 2023)





When data is...
 Reliable
 Accurate
 Timely

Counties can...
 Find Root Causes
 Be Accountable
 Improve Outcomes



The Community Health Assessment (CHA) is a vital tool that Waukesha County utilizes to gain a comprehensive understanding of the health and well-being of our community.

By gathering and analyzing relevant data, the CHA paints a vivid picture of the health needs, challenges, and strengths in Waukesha County.

Waukesha County
Community Health Assessment
2022





Health Behaviors

Health behaviors are actions individuals take that affect their health. Actions that lead to improved health may include eating well and being physically active. Actions that increase one's risk of disease may include smoking, excessive alcohol intake, and risky sexual behavior.

Leading Causes OF DEATH in Waukesha County in 2020

1. Heart Disease
2. Cancer
3. COVID-19

Note: This data is from County Health Rankings, Data in these categories spans several years and the most recent data is used.

(Waukesha Wisconsin County Health Rankings 2022)

(Wish query: Mortality module - broad groups 50 cause-of-death categories 2020)

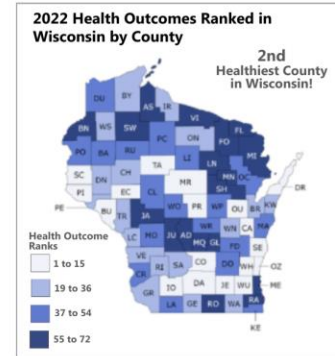
- Physical Inactivity: 19%**
Adults reporting no physical activity (WI: 23%)
- Adult Obesity: 30%**
Percent of adults with BMI 30+ (WI: 30%)
- Sexually Transmitted Infections Rate: 212.3**
per 100,000 residents (WI: 161.8 per 100,000)
- Teen Birth Rate: 4 per 1,000**
Number of births per 1,000 female population ages 15-19 (WI: 11 per 1,000)
- Adult Smoking: 13%**
Percent of adults who smoke (WI: 15%)
- Alcohol Impaired Driving Deaths: 32%**
Percentage of driving deaths with alcohol involvement. (WI: 10%)
- Drug Overdose Deaths Rate: 19 per 100,000**
Number of drug poisoning deaths per 100,000 population (WI: 22 per 100,000)
- Excessive Drinking: 27%**
Percent of adults binge drinking (WI: 25%)
- Motor Vehicle Crash Death Rate: 6 per 100,000**
Number of motor vehicle crash deaths per 100,000 population (WI: 10 per 100,000)



Health Outcomes & Behaviors

Health Outcomes

Health Outcomes measure the well-being of a community by evaluating life expectancy and the quality of life of its residents. The ranking takes into account multiple factors that impact health, such as access to quality medical care, employment opportunities, clean water, and affordable housing.



(Wisconsin Health Outcome Rankings 2022)

In 2022, Waukesha County was recognized as the 2nd healthiest county in Wisconsin and the 22nd healthiest community in the United States, according to County Health Rankings & Roadmaps.

Health Outcomes Indicator	Waukesha County	WI	Rank in WI
Premature Death <small>Years of potential life lost before age 75 per 100,000 population (age-adjusted)</small>	4,900 years	6,600 years	7
Poor or fair health <small>(% of total adult population)</small>	11%	15%	2
Poor physical health days <small>(average last 30 days, adults)</small>	2.8	3.6	2
Poor mental health days <small>(average last 30 days, adults)</small>	3.7	4.4	1
Low birthweight <small>(Percentage of live births with low birthweight < 2,500 grams)</small>	6%	8%	24
Child mortality <small>Deaths among residents under age 18 per 100,000 population</small>	40	50	37
Diabetes prevalence <small>(% of total adult population)</small>	7%	7%	4
HIV prevalence <small>(rate per 100,000)</small>	46	132	31

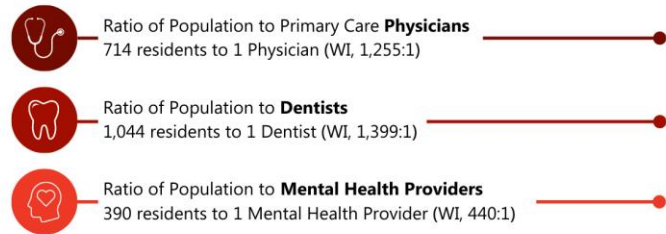
(Salgado. Waukesha County ranks as one of the healthiest communities in the country, according to U.S. News & World Report 2022), and (Waukesha Wisconsin County Health Rankings 2022)



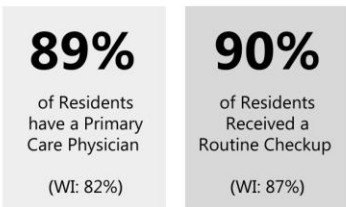
Health Care and Quality

Health Care and Quality represents the connection between people's **access** to and **understanding** of health services related to their own health. Factors that improve access and understanding of health care in the community are having enough medical providers, health insurance coverage, health literacy and more.

Waukesha County has a large number of health care providers and ranks highly in Population to Provider ratios in primary care, dentistry, and mental health when compared to other Wisconsin counties. Having enough providers where people live, work, and play is one of many factors that improve access to healthcare.



In 2019, Waukesha County had more than 560 Primary Care Physicians, one Primary Care Physician for every 714 residents. In Wisconsin, this Population to Primary Care Physician ratio is behind only Ashland, Wood, and La Crosse Counties.



(Waukesha Wisconsin County Health Rankings 2022), and (Social Determinants of Health)



Neighborhood and Built Environment

Neighborhood and Built Environment represents the connection between where a person lives – housing, neighborhood, and environment – and their health and wellbeing. Factors that improve a person's neighborhood and built environment include quality of housing, access to transportation, availability of healthy foods, air and water quality, and neighborhood crime and violence.

- Severe Housing Problems: 11% (WI: 14%)**
Percentage of households with at least 1 of 4 housing problems: overcrowding, high housing costs, lack of kitchen facilities, or lack of plumbing facilities.
- Driving Alone to Work: 83% (WI: 80%)**
Percentage of the workforce that drives alone to work. The choices for commuting to work can include walking, biking, taking public transit, carpooling, or individuals driving alone.
- Broadband access: 91% (WI: 85%)**
Percentage of households with broadband internet connection. Reliable, high-speed broadband internet improves access to education, employment, health care opportunities and increased economic development.
- Food Environment Index: 9.2 (WI: 8.7) out of 10**
Scale is from 0 (worst) to 10 (best)
Food Environment Index measures the factors that contribute to a healthy food environment, from 0 (worst) to 10 (best) that account for both proximity to healthy foods and income. There is strong evidence that food deserts are correlated with high prevalence of overweight, obesity, and premature death as supermarkets traditionally provide healthier options than convenience stores or smaller grocery stores.
- Access to Exercise Opportunities: 91% (WI: 78%)**
Percentage of population with adequate access to locations for physical activity. Increased physical activity is associated with lower risks of type 2 diabetes, cancer, stroke, hypertension, cardiovascular disease, and premature mortality, independent of obesity. The role of the built environment is important for encouraging physical activity. Individuals who live closer to sidewalks, parks, and gyms are more likely to exercise.

(Waukesha Wisconsin County Health Rankings 2022)

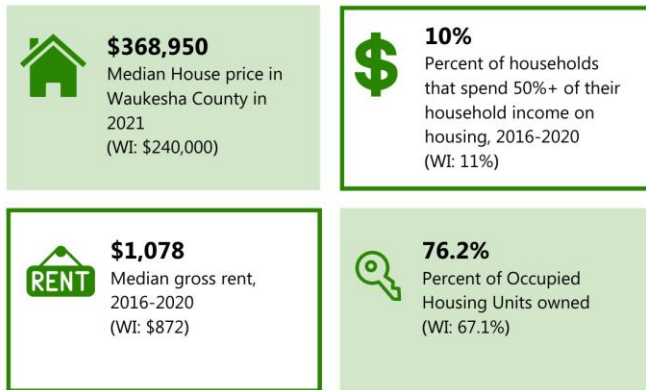


\$ Economic Stability

The cost of living is high in Waukesha County.

When families have to spend a large part of their income on housing, they may not have enough money to pay for things like healthy food or health care.

This is linked to increased stress, mental health problems, and an increased risk of disease. Expanding policies that make housing more affordable can help reduce the proportion of families that have a severe housing cost burden.



(Waukesha Wisconsin County Health Rankings 2022)

“Overall, there is not affordable housing in Waukesha County. The county is a great place to live, but there is not enough housing stock or affordable options for renting. It makes it very difficult to set down roots in the community.

(Waukesha County Quality of Life Survey 2022)



Education Access and Quality

Education access and quality is the connection of education to health and wellbeing. Factors that improve education access and quality include graduating from high school, enrollment in higher education, educational attainment in general, language and literacy, and early childhood education and development.

96% (WI: 90%) High School Completion

96% of adults ages 25 and over in Waukesha County have a high school diploma or equivalent. The relationship between education and improved health outcomes is well known, with a high school degree correlating strongly with higher life expectancies and improved quality of life. Waukesha County is highly educated population with 44.8% of residents having a bachelor's degree or higher, the third highest in the State.

"The schools are filled with staff who want to see academic, social, physical, and emotional growth among our young community members. However, budget cuts due to enrollment funding, will make growth of the whole child more challenging."

(Waukesha County Quality of Life Survey 2022)

Reading scores: 3.4 (WI: 3.0)



In Waukesha County, Wisconsin, third grade students scored, on average, 3.4 on a standardized test for English language arts. A score of 3.0 indicates students performed at grade-level.

Math scores: 3.6 (WI: 3.0)



In Waukesha County, Wisconsin, third grade students scored, on average, 3.6 on a standardized test for math. A score of 3.0 indicates students performed at grade-level.

(Waukesha Wisconsin County Health Rankings 2022), and (Social Determinants of Health)



Social and Community Context

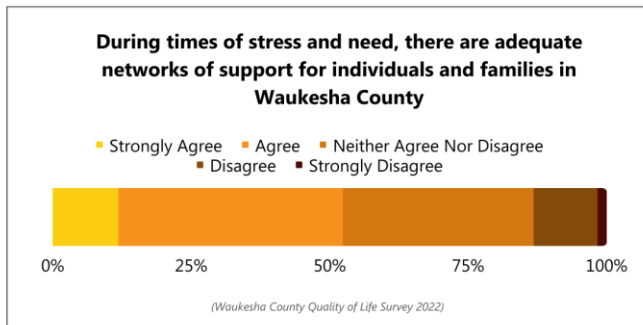
Social and community context is the connection between where people live, learn, work, and play, and their health and wellbeing. Factors that improve social and community context include cohesion within a community, civic participation, discrimination, conditions in the workplace, and incarceration.

(Waukesha Wisconsin County Health Rankings 2022), and (Social Determinants of Health)

Social associations: 11.2
(WI: 11.4)
Number of membership associations per 10,000 population.

Disconnected Youth: 3%
(WI: 5%)
Percentage of teens ages 16-19 who are neither working nor in school.

According to the 2022 Waukesha County Perception of Quality of Life Survey, 52% of residents said that they have adequate networks of support in Waukesha County. Survey takers noted that in certain circumstances, like the Waukesha County Parade Tragedy, there was a lot of community support, where in other challenging times, like the COVID-19 pandemic, they felt less supported.



The County Health Rankings data helps us tell the story of health in Waukesha County



Waukesha County
Community Health Assessment
2022



Healthy Aging

Life Expectancy
81.1 (WI: 78.9)

Premature Age-Adjusted Mortality
240 (WI: 320)

Injury Deaths
88 (WI: 89)

Preventable Hospital Stays
2536 (WI:2559)

Severe Housing Cost Burden
10% (WI: 11%)

Mental Health

Poor Mental Health Days
3.8 (WI: 4.4)

Frequent Mental Distress
12% (WI 13%)

Mental Health Providers
370:1 (420:1)

Social Associations
11.4 (WI: 11.2)

Disconnected Youth
3% (WI:5%)

Substance Use

Excessive Drinking
26% (WI:26%)

Alcohol- Impaired Driving Deaths
32% (WI: 36%)

Drug Overdose Deaths
19 (WI: 22)

Strategic Health Priorities (2022- 2026)

What can you do?



Advocate for the collection and use of high quality data



Use data to drive decision and policy making



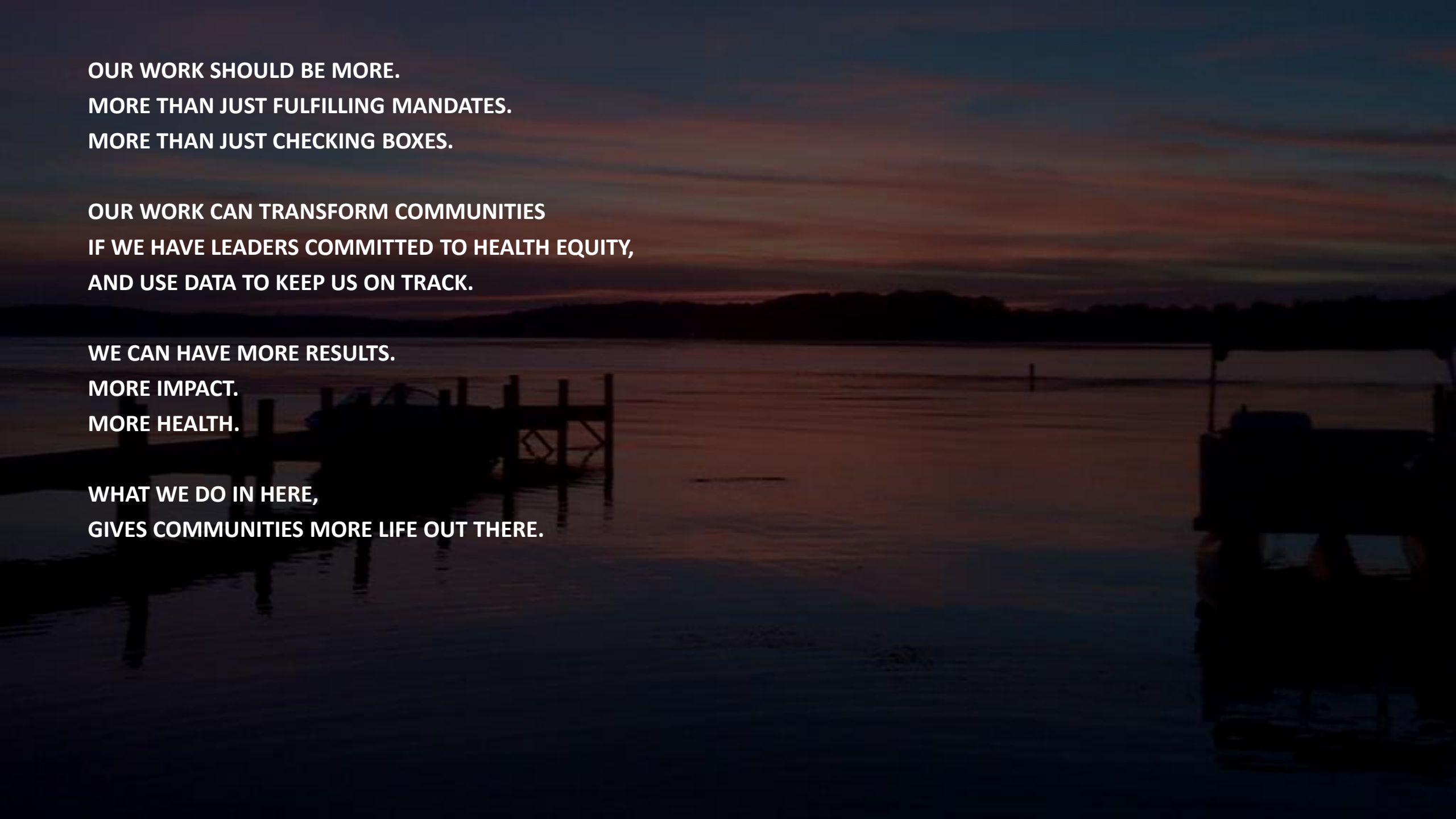
Use data to improve health equity



Use data to hold your community accountable



Be cautious of data deeping bias



**OUR WORK SHOULD BE MORE.
MORE THAN JUST FULFILLING MANDATES.
MORE THAN JUST CHECKING BOXES.**

**OUR WORK CAN TRANSFORM COMMUNITIES
IF WE HAVE LEADERS COMMITTED TO HEALTH EQUITY,
AND USE DATA TO KEEP US ON TRACK.**

**WE CAN HAVE MORE RESULTS.
MORE IMPACT.
MORE HEALTH.**

**WHAT WE DO IN HERE,
GIVES COMMUNITIES MORE LIFE OUT THERE.**



Waukesha County
Public Health Annual Report
2022



Waukesha County Public Health is a Division of
Waukesha County Health & Human
Services Department

Social Media Resources

@WaukeshaCountyPublicHealth



**Waukesha County Health &
Human Services**



@WaukeshaCoHHS



**Waukesha County Health & Human
Services**



Learn more about Waukesha County
Public Health on our [website!](#)



STRONGER COUNTIES. STRONGER AMERICA.

National Association of Counties
660 North Capitol Street, N.W. | Suite 400
Washington, D.C. 20001
202.393.6226 • www.NACo.org

[fb.com/NACoDC](https://www.facebook.com/NACoDC)

[@NACoTweets](https://twitter.com/NACoTweets)

[youtube.com/NACoVideo](https://www.youtube.com/NACoVideo)

[linkedin.com/company/NACoDC](https://www.linkedin.com/company/NACoDC)