

2018 NACo
**ANNUAL
CONFERENCE
& EXPOSITION**



DAVIDSON COUNTY / JULY
NASHVILLE, TENNESSEE 13-16



ANNUAL CONFERENCE & EXPOSITION



NASHVILLE / DAVIDSON COUNTY TENNESSEE

Healthy Counties Advisory Board Meeting

8:30 a.m. – 10:00 a.m.

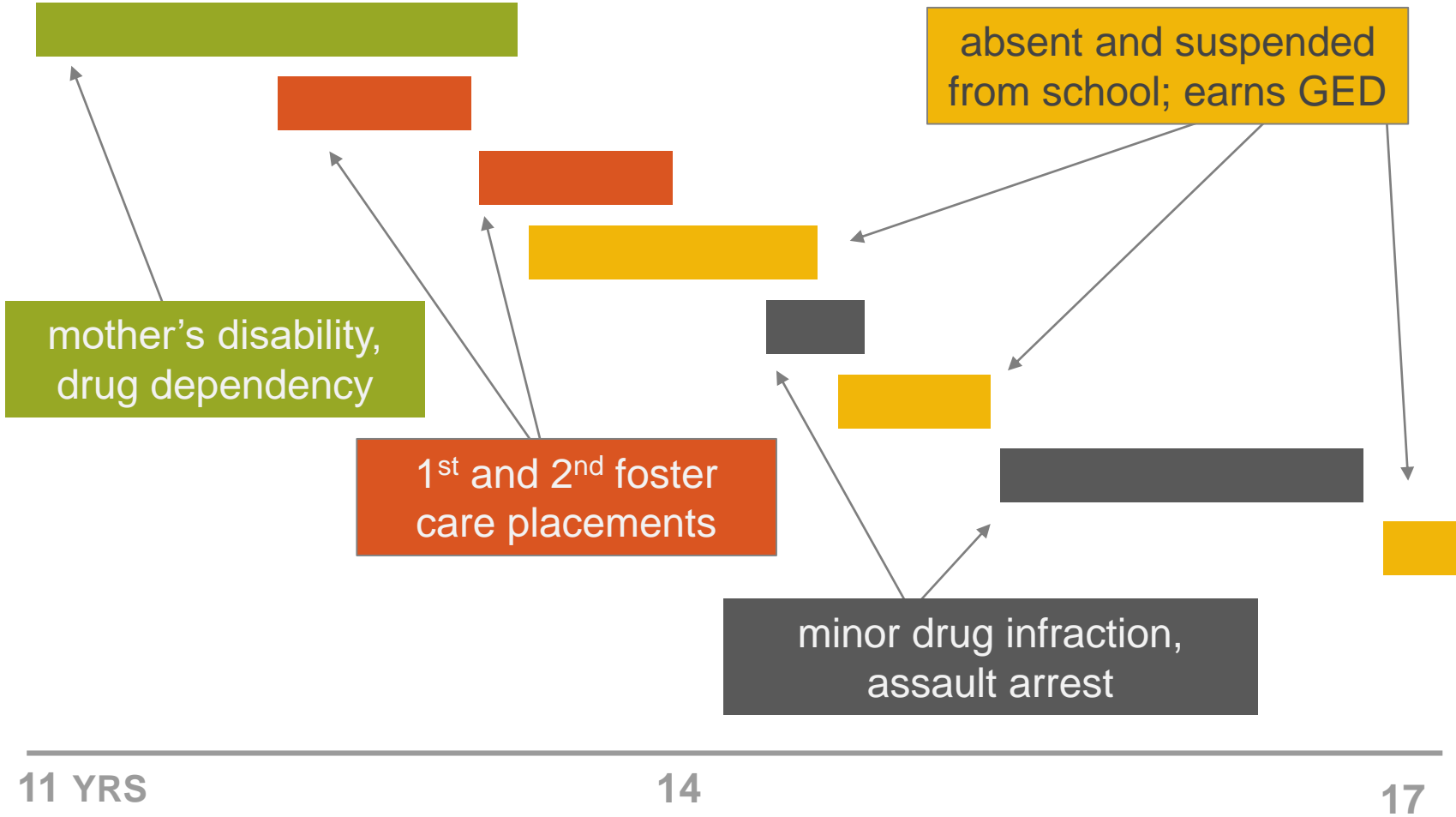


serving the underserved

July 14, 2018

THE ANNIE E. CASEY FOUNDATION

Teenage Years



Program Data Is Siloed



Child Welfare Services



Health



Juvenile Justice



What Is an Integrated Data System?



Meeting the needs of kids facing challenges in our communities can be a tough nut to crack

What Kind of Bet Is IDS for a County?

~~Technology Project~~

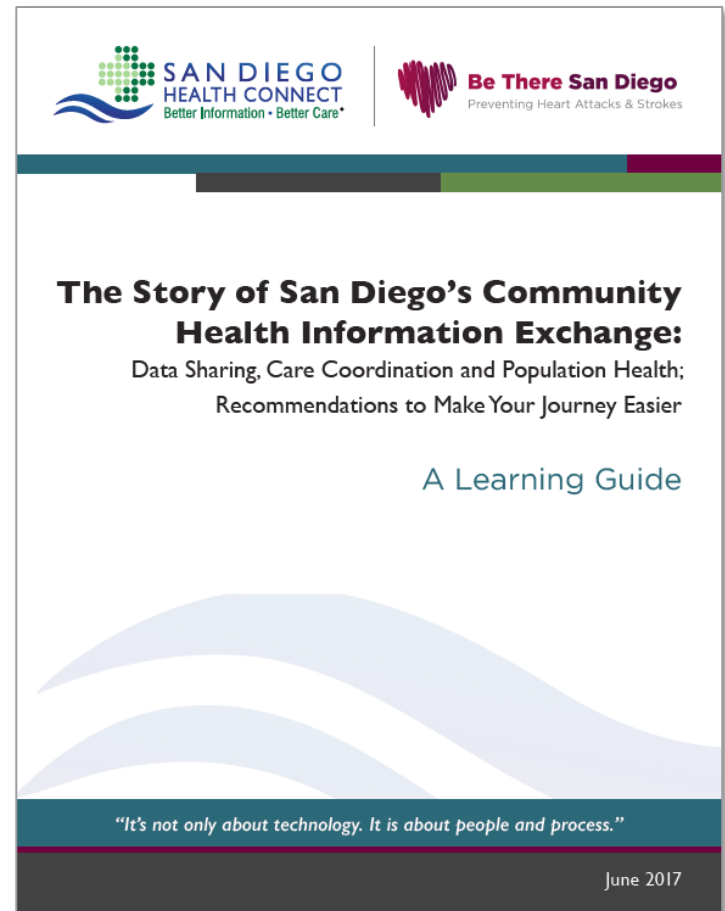


“Business Intelligence” — But for Social Policy



IDS Example: San Diego Health Connect

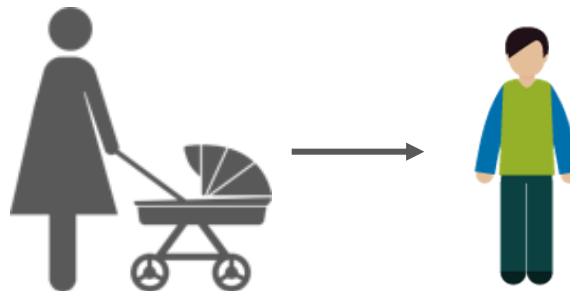
- Includes 99% of patients in San Diego and Imperial counties
- Processes 20 million transactions per month
- Provides EMS with client medical history, allergies, medications
- Rapid response to public health crisis



IDS Example: Pre-K Expansion in Philadelphia

Pennsylvania Vital Statistics
birth record
(CY 2003 – CY 2016)

- Inadequate prenatal care
- Low maternal education
- Teen mother
- Low birth weight/ preterm birth



Public Health
Lead Exposure
(CY 2003 – CY 2016)

- Lead exposure

Child Protective Services
(CY 2003 – CY 2016)

- Substantiated case of abuse or neglect

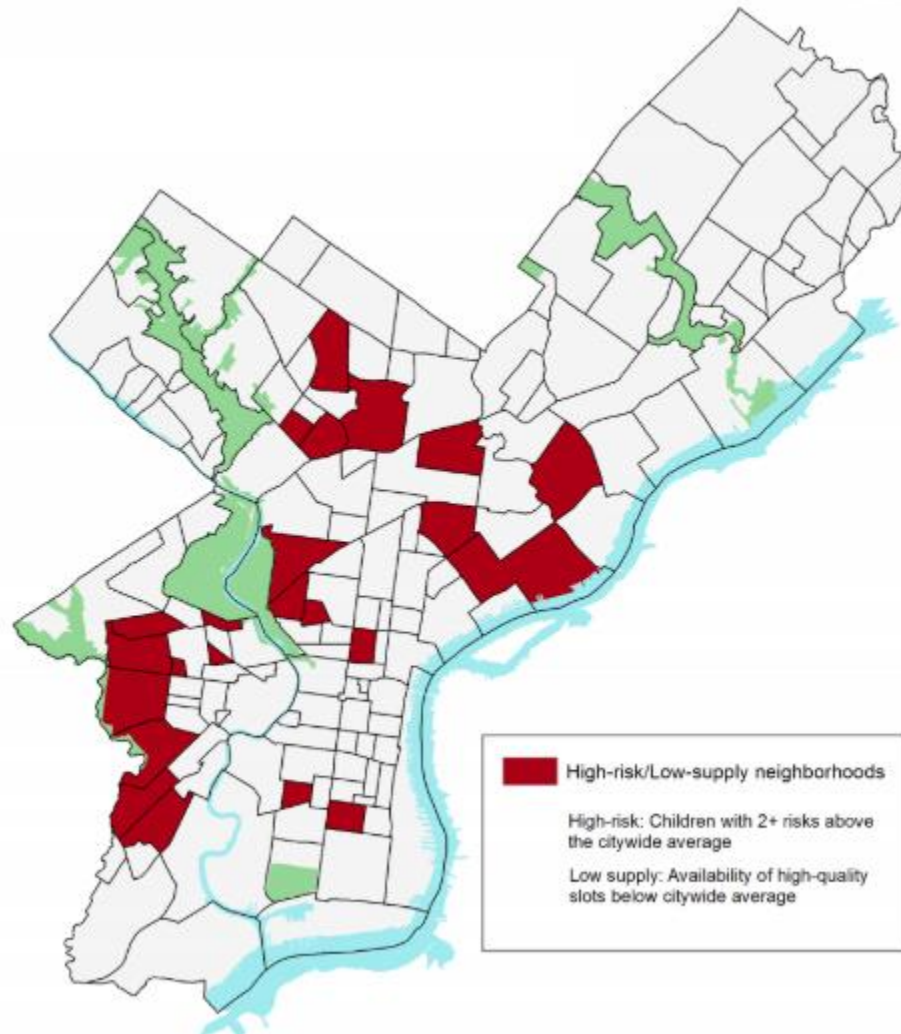
Supporting Housing
Emergency Shelter
(CY 2003 – CY 2016)

- Entered emergency shelter

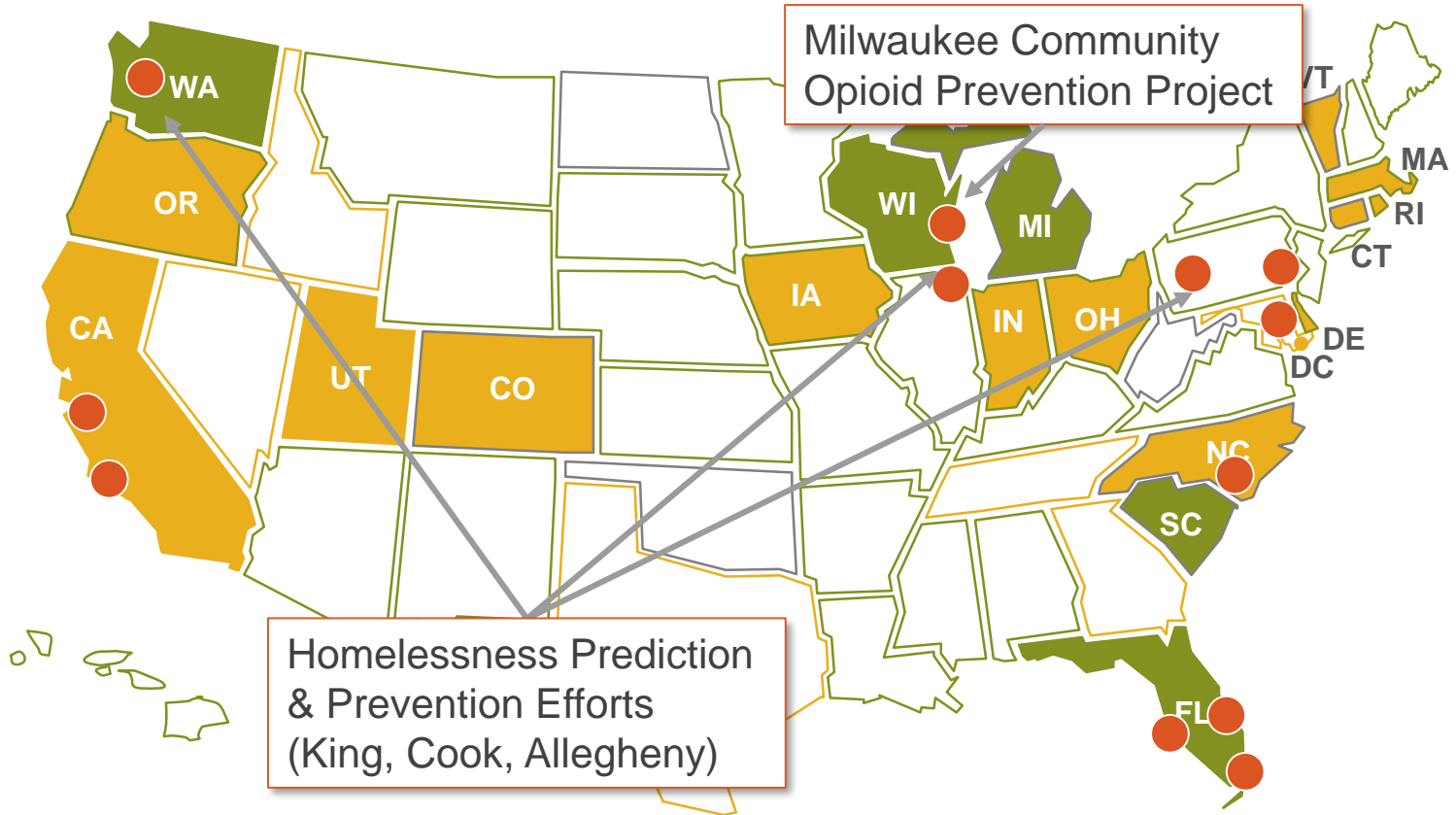
IDS Example: Pre-K Expansion in Philadelphia

- *Primary indicator:*
High risk, low supply

- *Secondary indicator:*
Supply for area met citywide average, but risk population exceeds supply



National IDS Network



Milwaukee Community Opioid Prevention Project

Homelessness Prediction & Prevention Efforts (King, Cook, Allegheny)

- County IDS
- State – Established IDS
- State – In Progress

“Getting Big Data to the Good Guys”



Child Welfare Services



Health



Juvenile Justice



Discussion

- When you think about the “unconnected” and trying to improve health in your counties, what populations are urgent and important?
- In what ways are data and shared information a tool for counties to close those “gaps” clients and families fall into? (Conversely, when is gathering data a costly compliance chore?)
- Where are there opportunities for innovation?
- What are you already doing to integrate data across key agencies? What more are you working to do?
- What barriers would you need removed to share and use information in these ways?