

Someone to Respond to a Behavioral Health Emergency: Mobile Crisis Teams

March 9, 2022

Stronger Counties. Stronger America.





Alexandra Martinez

.....

Director, Crisis Center,
Alachua County, Fla.

Robert Udell

.....

Sheriff, Yakima County, Wash.

Kurtis Young

.....

Operations Administrator –
Acute Psychiatric Services,
Parkland, Dallas, Texas



YAKIMA COUNTY SHERIFF

**DESIGNATED CRISIS RESPONDER (DCR)
PROGRAM**

Sheriff Robert Udell

Historical Yakima Co Sheriff's Office Response to Mental Health Crisis

- ▶ Deputy responded often alone. Yakima County very large!
- ▶ Deputy would evaluate the situation, with emphasis on safety
- ▶ Additional resources, most commonly an ambulance and fire, possibly called
- ▶ If needed, a Mental Health Professional (MHP), would be contacted and subject transported to hospital or mental health facility
- ▶ MHPs often in short supply, requiring deputy to often wait for hours
- ▶ Subject could be in far different place by the time MHP arrival
- ▶ In many cases, no MHP, no services, and no bed
- ▶ **Worst case scenario: Subject booked into jail due to no other alternative**

The start of something new...

- ▶ Comprehensive Healthcare, with support of *Trueblood* Grant, proposes DCRs
- ▶ DCR to be embedded in patrol cars, deputies provide safety
- ▶ DCR would take advantage of law enforcement first contact with those in mental health crisis
- ▶ On-scene assessment
- ▶ Promise of much quicker mental health assistance for the deputy
- ▶ *Trueblood* Grant offered funding for at least three years
 - ▶ *Trueblood* funds result of WA state settlement of lawsuit reference inadequate timely evaluation of certain people in crisis

Initial reaction to a DCR in the cars

- ▶ Deputies resisted a rider: the car is their office
- ▶ Lack of trust that a new program will work
- ▶ Hesitance in working with unknown DCR in the field
- ▶ Expectation of same old response, with minimal results

▶ But what did happen?

It worked!

- ▶ DCRs immediately proved their worth
- ▶ Their expertise brought about quicker resolutions, access to services
- ▶ Many subjects react better to DCRs than uniformed deputies
- ▶ DCRs could continue with interactions, allowing deputies to clear for other calls
- ▶ Help for mental health crisis became immediate
- ▶ DCRs come with long list of resources and provide follow up beyond any law enforcement
- ▶ Plus DCRs worked their magic on homeless, senior citizen issues, family problems, etc
- ▶ DCRs offer opportunity for diversion programs, great alternative to confinement

Program continues to expand and improve

- ▶ DCRs have option of driving agency vehicles
- ▶ Interagency training program being developed to further support the DCR riding in patrol vehicle
- ▶ Deputy mental health benefits to having DCRs available
- ▶ Trueblood Grant coming to end, but new County mental health tax providing revenues to continue and expand
- ▶ Goal to have two DCRs on in County 24/7

Best mental health program involving law enforcement in my 32 years!



City of Dallas

RIGHTCare

P R O G R A M



Kurtis Young, LCSW
Operations Administrator
Behavioral Health Services
Parkland Health

R.I.G.H.T. Care Program



- The Rapid Integrated Group Healthcare Team (RIGHT) Care Program is a mental health response team.
- The purpose of this team is to respond to members of the community experiencing mental health crisis, and to divert them from jail or hospitalization and to provide them with connectivity to prevention and intervention services.
- Launched as a pilot program in South Central Dallas in January 2018



Team Members



Assists in identifying behavioral health calls. Provides telephonic consultation to the reporting person to determine the behavioral health intervention.



Field assessment, physical exam, and vital signs. Assess the need for medical transport.



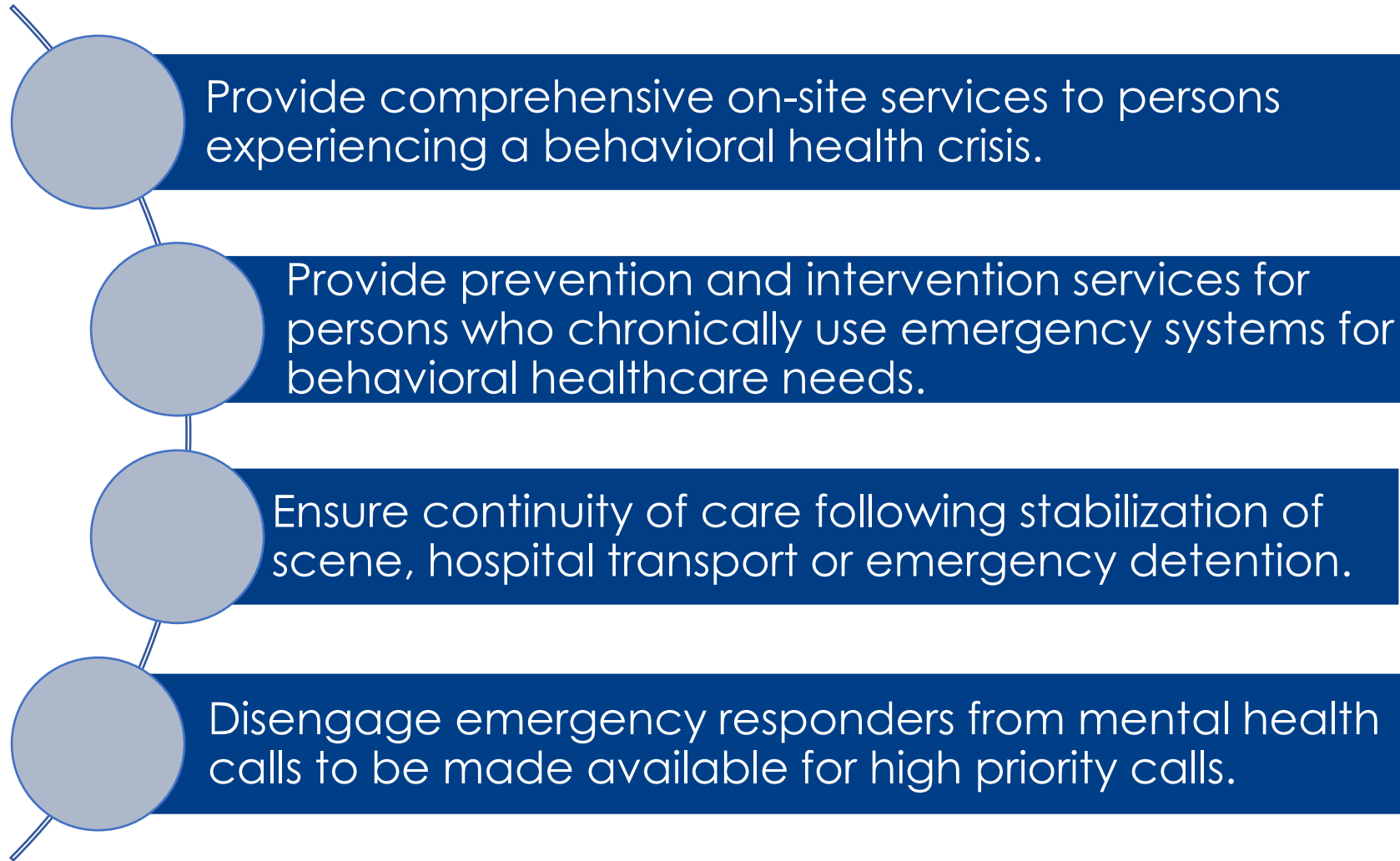
Scene security and assessing for victimization. Addressing law enforcement issues.



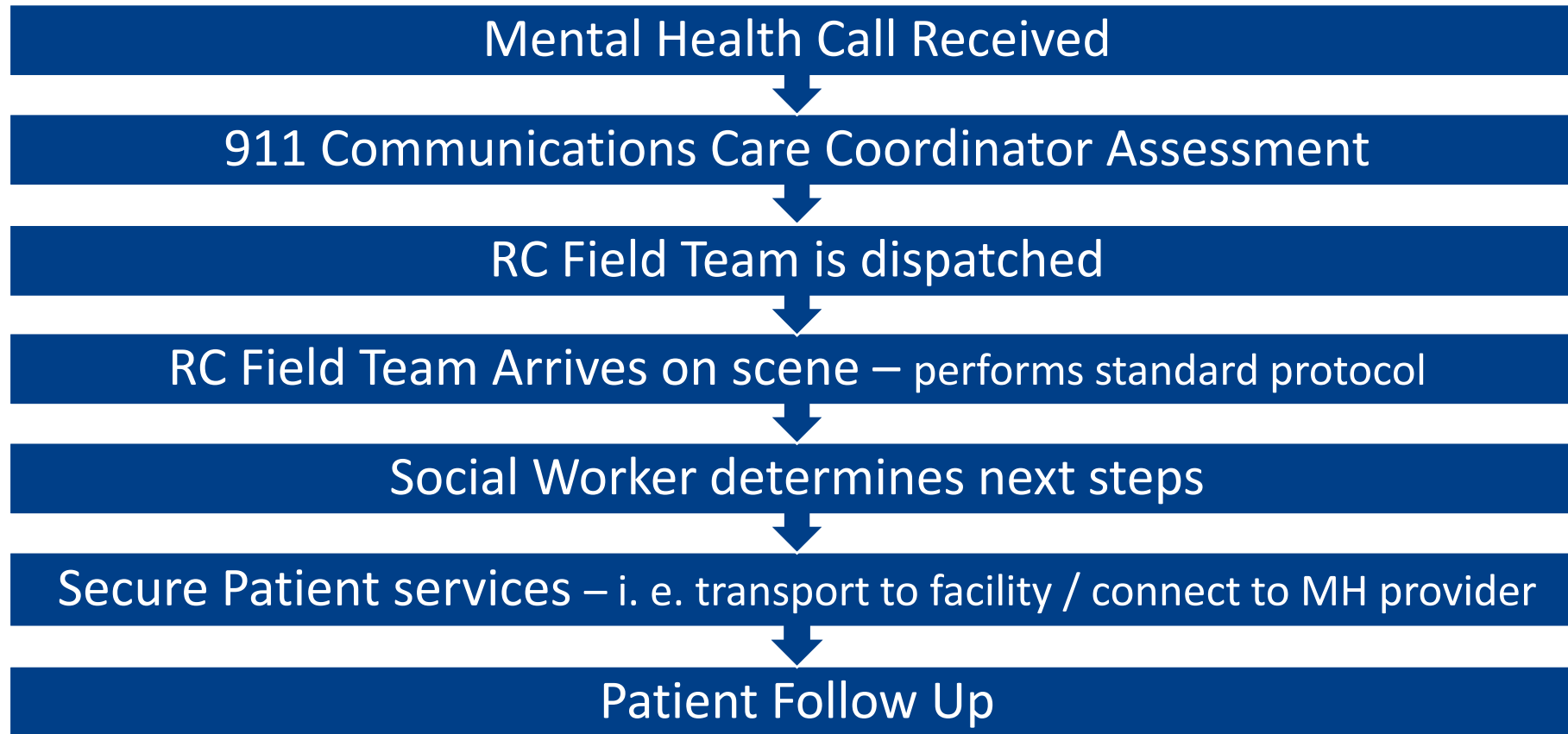
Parkland
Mental health evaluation, determine immediate and long-term care needs, and link to community-based services.



Program Objectives



Workflow Process



Parkland



Operations



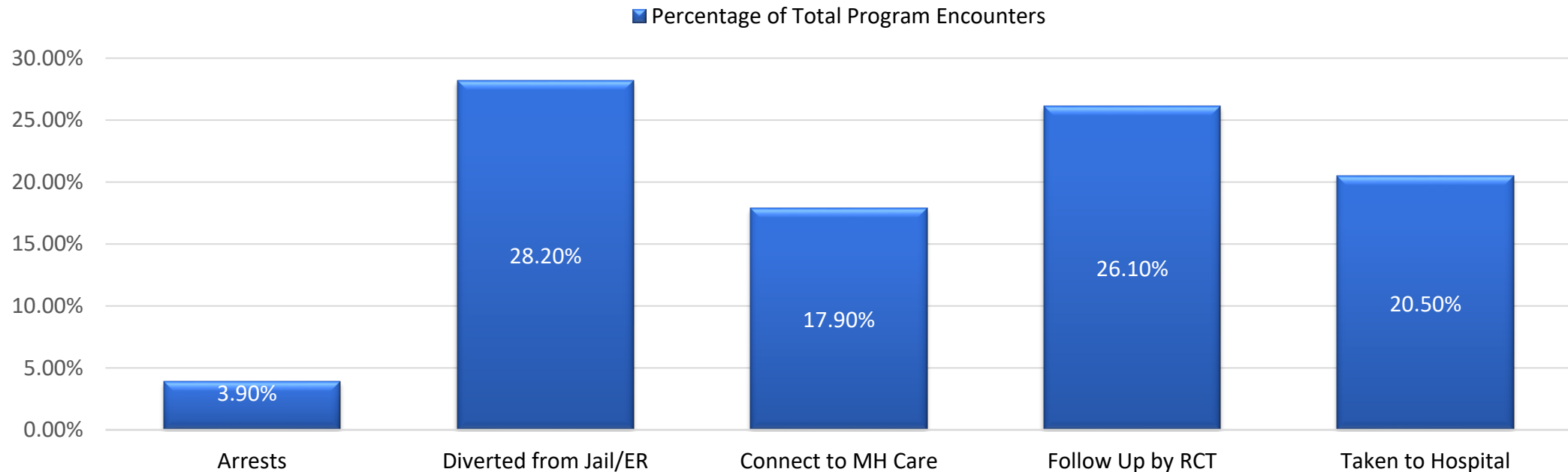
- There are currently **7** teams providing citywide coverage
- Operational hours: 7 days/week, 16 hours, 2 shifts.
 - 2nd Shift 7:00am – 3:00pm
 - 3rd Shift 3:00pm – 11:00pm
- Dial 9-1-1 to contact the RIGHT Care Team



Data



- Team responds to 52% of all mental health 911 calls
- Parkland has seen Emergency Detentions decline by ~20% year over year since expansion.



**Percentages will not add up to 100% as data does not represent all possible outcomes.





Questions?



THANK YOU!

The National Association of Counties

660 N. Capitol Street NW | Suite 400

Washington, D.C. 20001 | 202.393.6226 | www.naco.org

fb.com/NACoDC | twitter.com/NACoTWEETS

youtube.com/NACoVIDEO | naco.org/linkedin

