

LOCAL GIS COLLABORATION

Why??

Some Driving Forces


Larry Stipek – Loudoun County

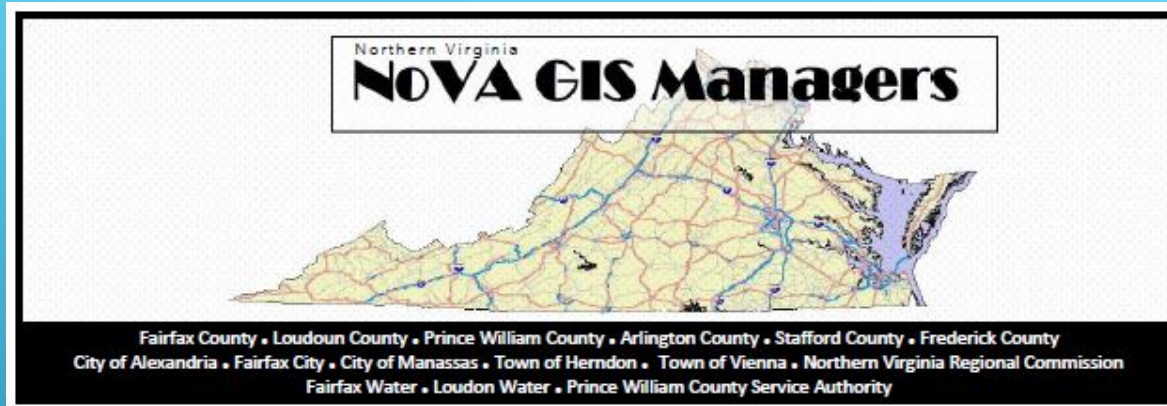
Tom Conry – Fairfax County

TRENDS I

- ▶ Acceleration
 - ▶ Of Constituent Expectations
 - ▶ Over 680,000 App Store apps are location enabled
 - ▶ Of Technology Lifecycle
 - ▶ Need to accelerate the diffusion of technology across GIS and local government staff

TRENDS II

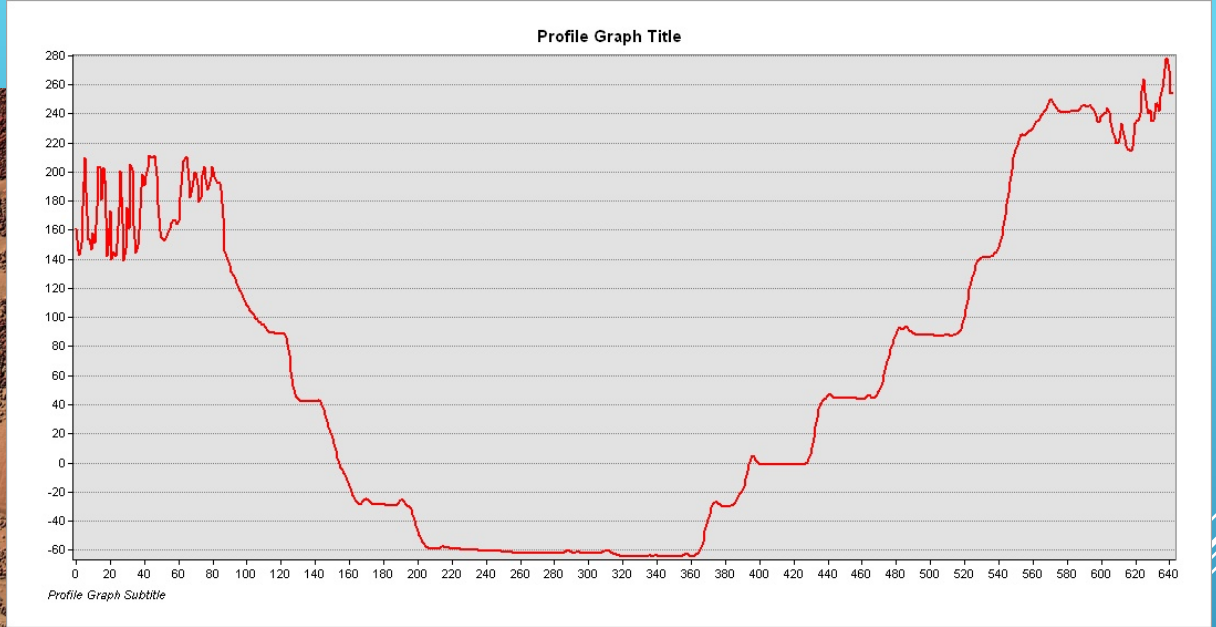
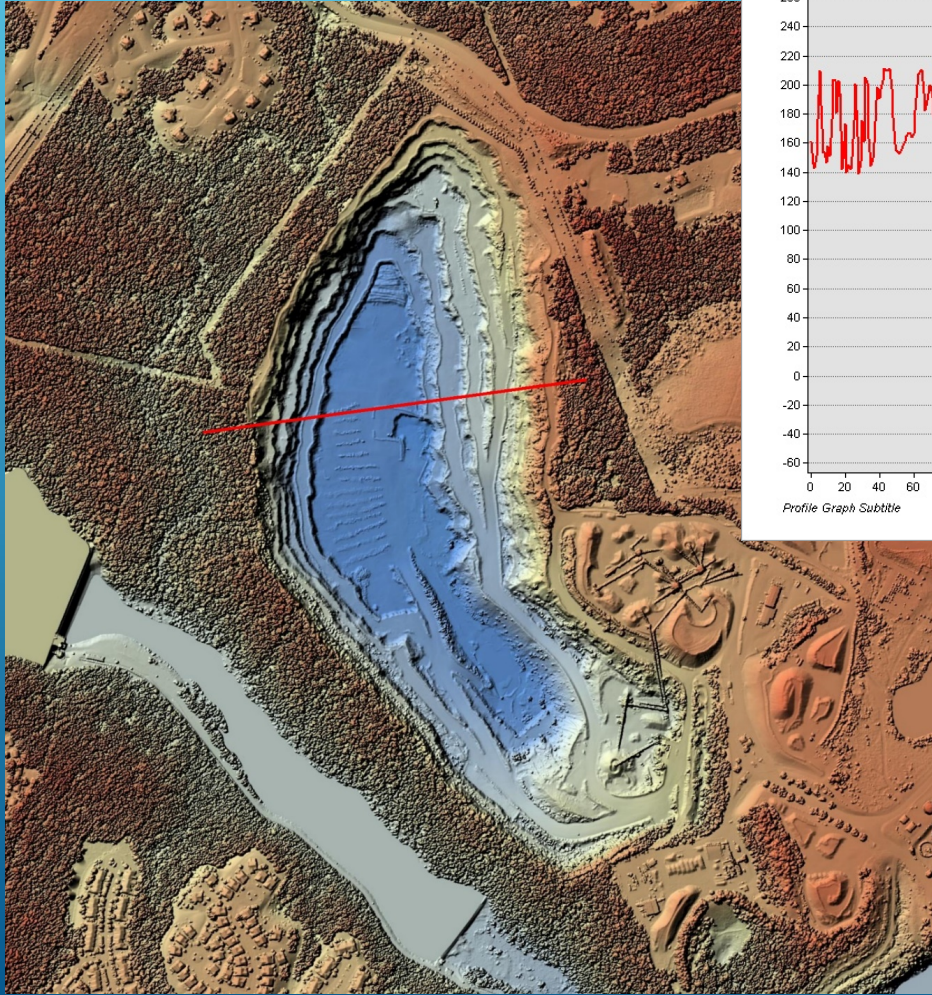
- ▶ More Coordination around Emergency Response
 - ▶ Shared Emergency Services
 - ▶ Next Gen 911
 - ▶ Rapid evolution of remotely sensed data sensors and tools
- 
- A series of several parallel white diagonal lines of varying lengths, located in the bottom right corner of the slide, pointing towards the top right.



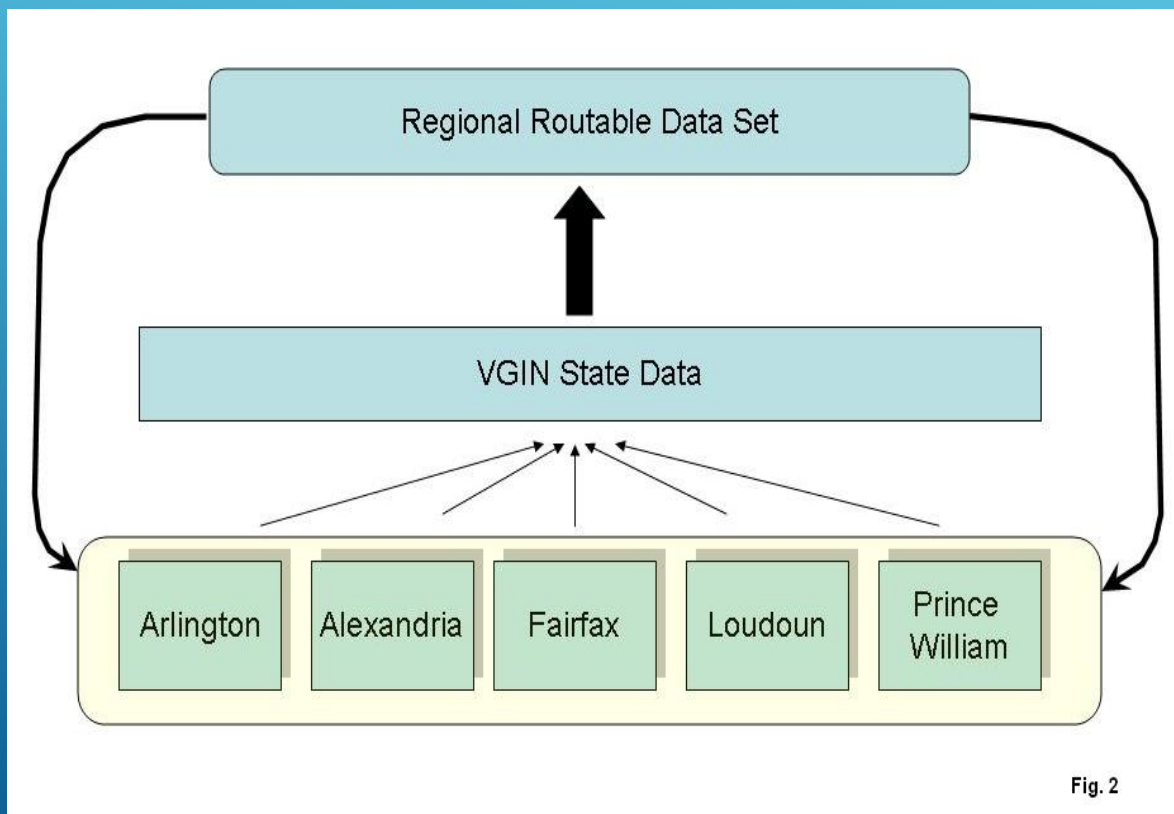
FAIRFAX COUNTY, ARLINGTON COUNTY, PRINCE WILLIAM COUNTY, LOUDOUN COUNTY, STAFFORD COUNTY, FAUQUIER COUNTY, FREDERICK COUNTY, CITY OF ALEXANDRIA, VIRGINIA GEOGRAPHIC INFORMATION NETWORK, TOWN OF HERNDON, NORTHERN VIRGINIA REGIONAL COMMISSION, LOUDOUN WATER, CITY OF MANASSAS, TOWN OF VIENNA, PRINCE WILLIAM COUNTY SERVICE AUTHORITY, CITY OF FAIRFAX, FAIRFAX WATER, CITY OF FALLS CHURCH,

APPROACH

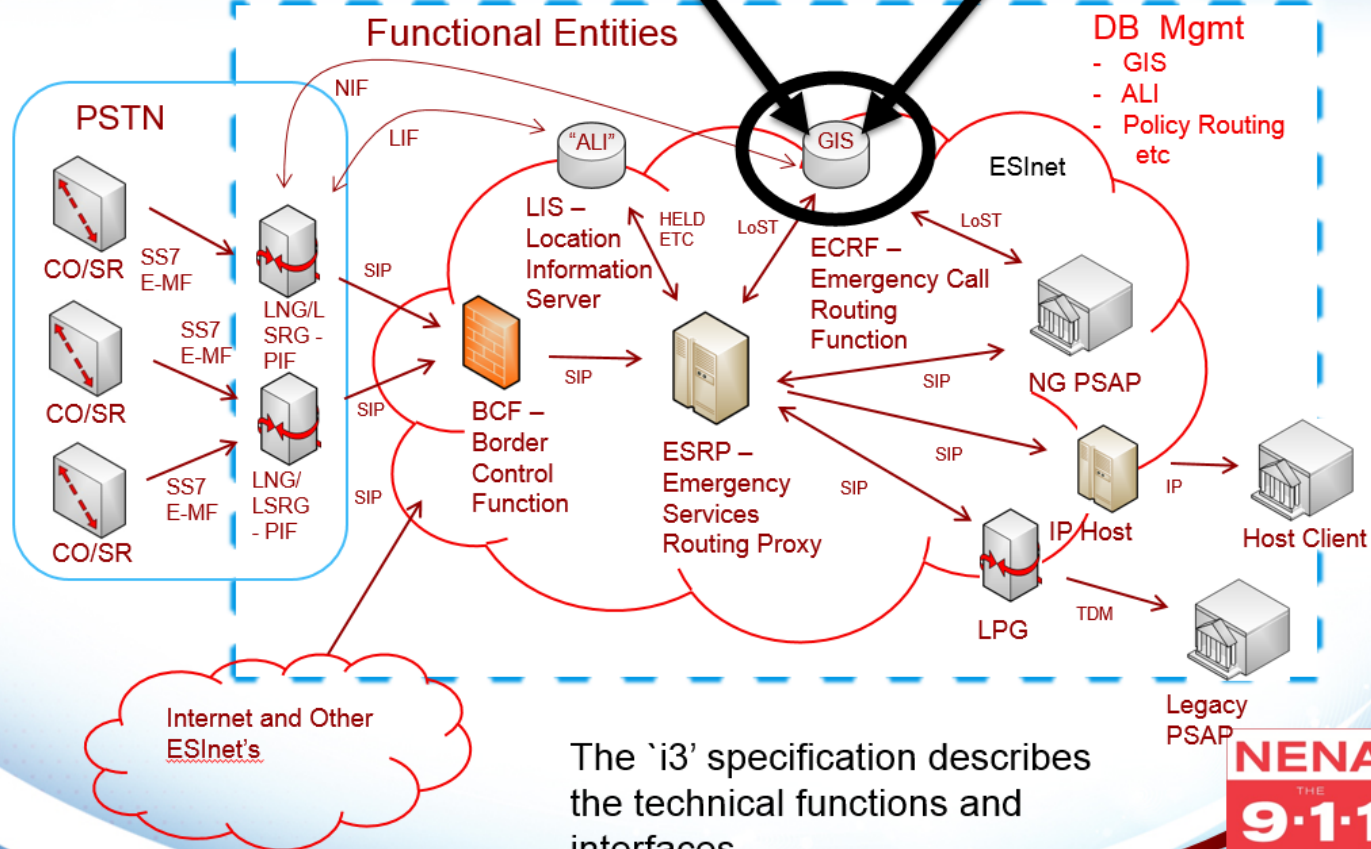
- ▶ NOVA Managers meet bi-monthly
 - ▶ Establish workgroups on vital topics/technologies to accelerate diffusion of technology across GIS and other staff
 - ▶ ArcGIS Online/Mobile
 - ▶ LIDAR
 - ▶ NG 911/Centerlines
 - ▶ App Dev
 - ▶ Emergency Operations
 - ▶ Trails



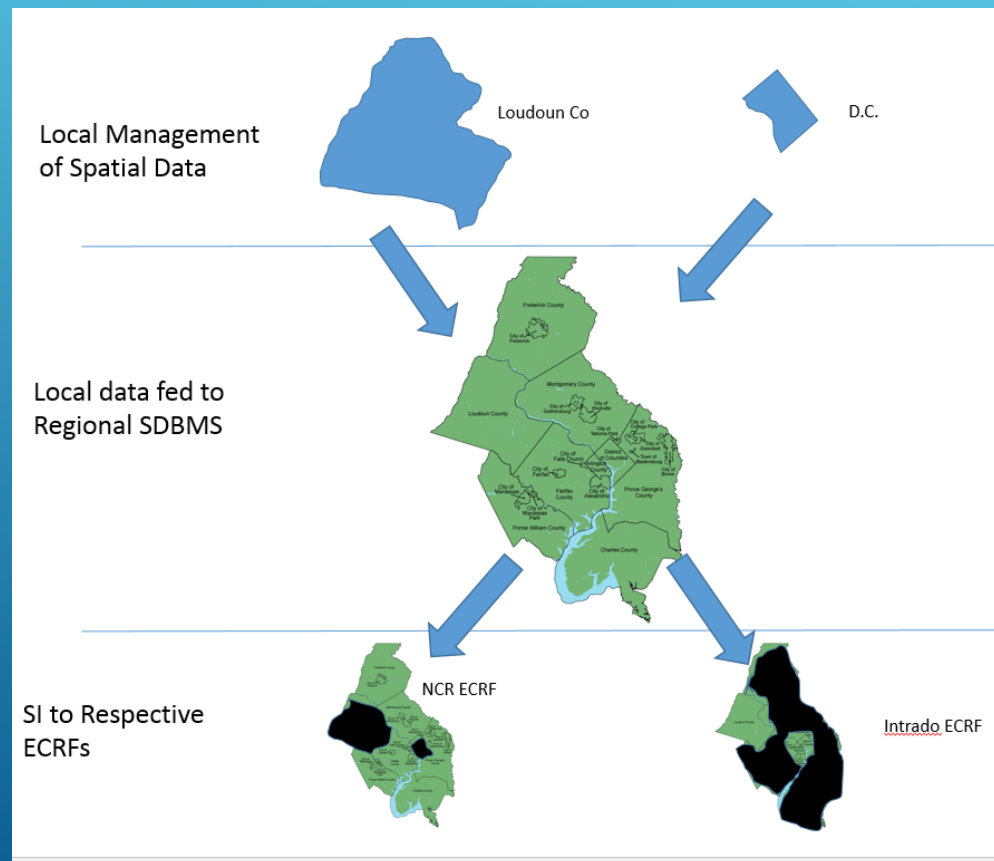
Regional Routable Centerline – Computer Aided Dispatch



NG9-1-1 System

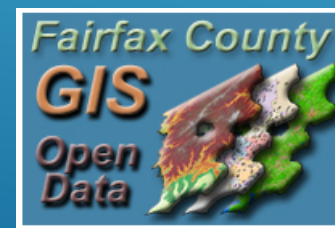


NEXT GEN 911 SPATIAL DATA SHARING



TRENDS III

- ▶ Data Sharing
 - ▶ Across National Capital Region
 - ▶ NCR Geospatial Data Exchange
 - ▶ Open Data
 - ▶ With other organizations
 - ▶ Loudoun Water
 - ▶ Towns (Leesburg, Vienna, Herndon)

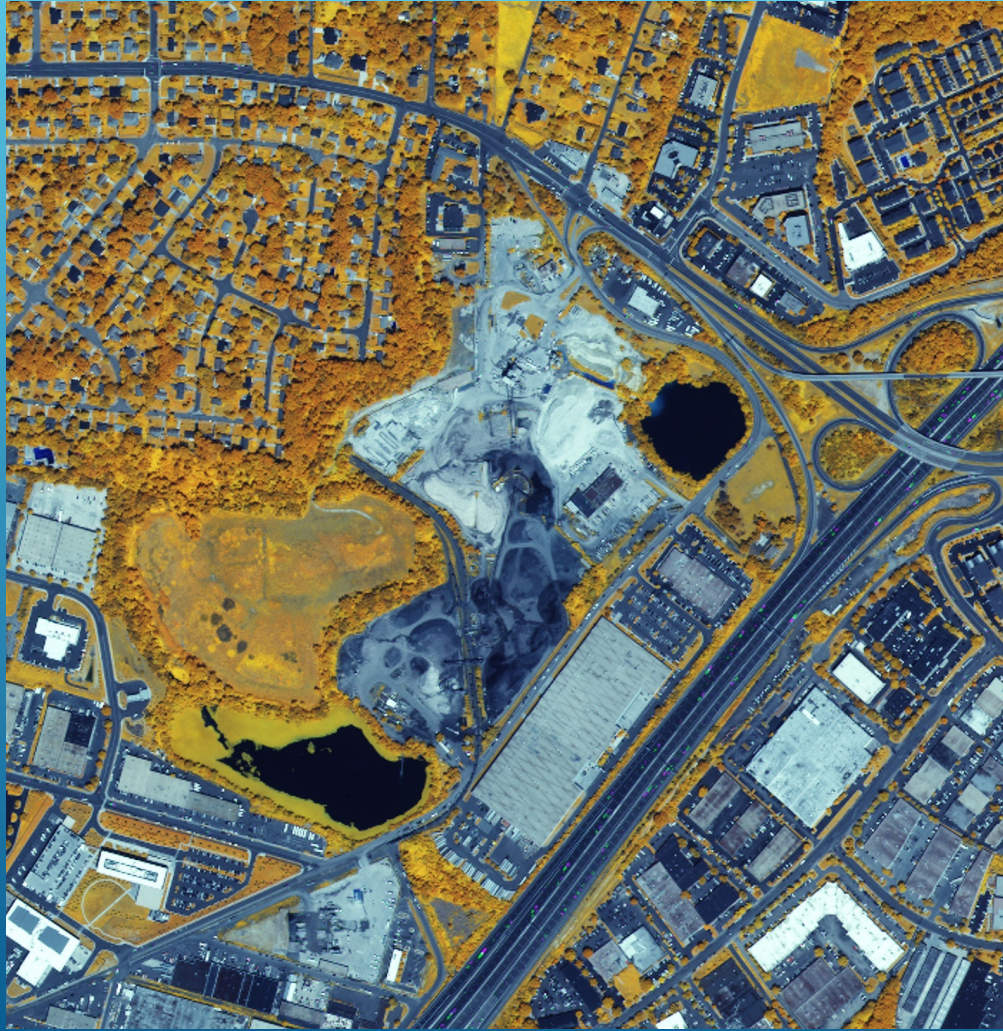


TRENDS IV

- ▶ Regional Collaboration
 - ▶ Washington Council of Governments
 - ▶ GIS Committee
 - ▶ Emergency Managers
- ▶ Stormwater/Urban Forestry
 - ▶ Multispectral imagery
 - ▶ Digital Elevation Models (from LIDAR and photogrammetric)



MULTI SPECTRAL SATELLITE IMAGERY



COLLABORATION EXTENDS BEYOND BOUNDARIES

- ▶ Project Collaboration/Cooperation
 - ▶ Oatlands
 - ▶ Balls Bluff
 - ▶ Mobile Data Collection (Hydrants, AOL)
- 
- A series of white lines of varying lengths and slopes are positioned in the bottom right corner of the slide, creating a modern, abstract graphic element.



BALLS BLUFF BATTLEFIELD PARK
LIDAR IMAGE

LOUDOUN COUNTY, NPS & NVRPA



MOBILE DATA COLLECTION WITH AOL

