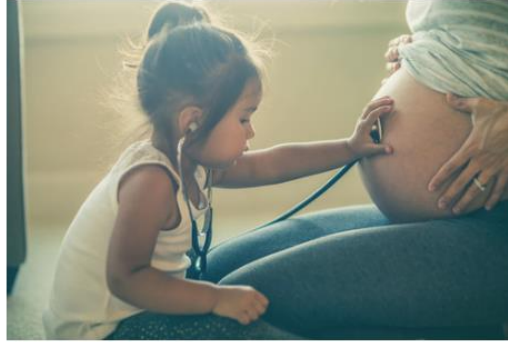
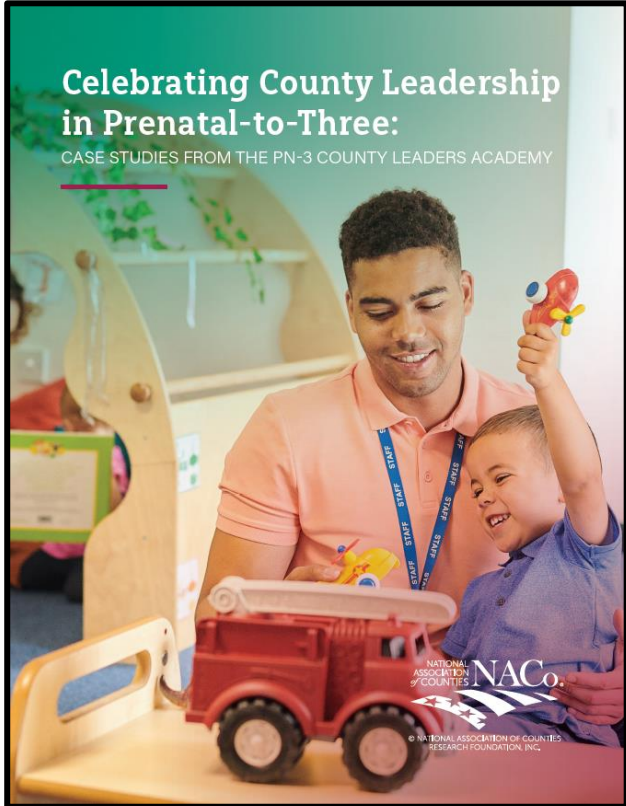


# Counties for Kids

# The Latest from Counties for Kids



## Counties Are Investing in Doulas to Advance Birth Equity

May 18, 2023 · Birth equity, Maternal health



## Local Strategies for Preventing Adverse Childhood Experiences

Feb 1, 2023 · Infant/toddler mental health

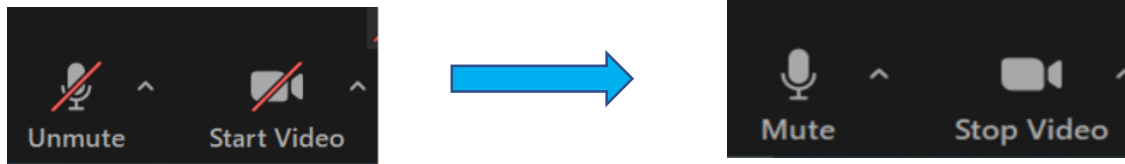
## UNDERSTANDING THE COUNTY ROLE AND AUTHORITY IN MATERNAL HEALTH

Thank you for taking the time to respond to NACo's survey on maternal health. The goal of this survey is to understand the county role in maternal health and our authority in the administration of these services. This survey explores the following:

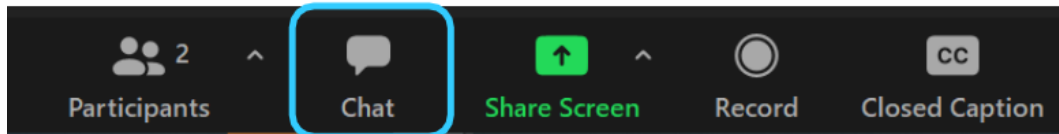


# Instructions

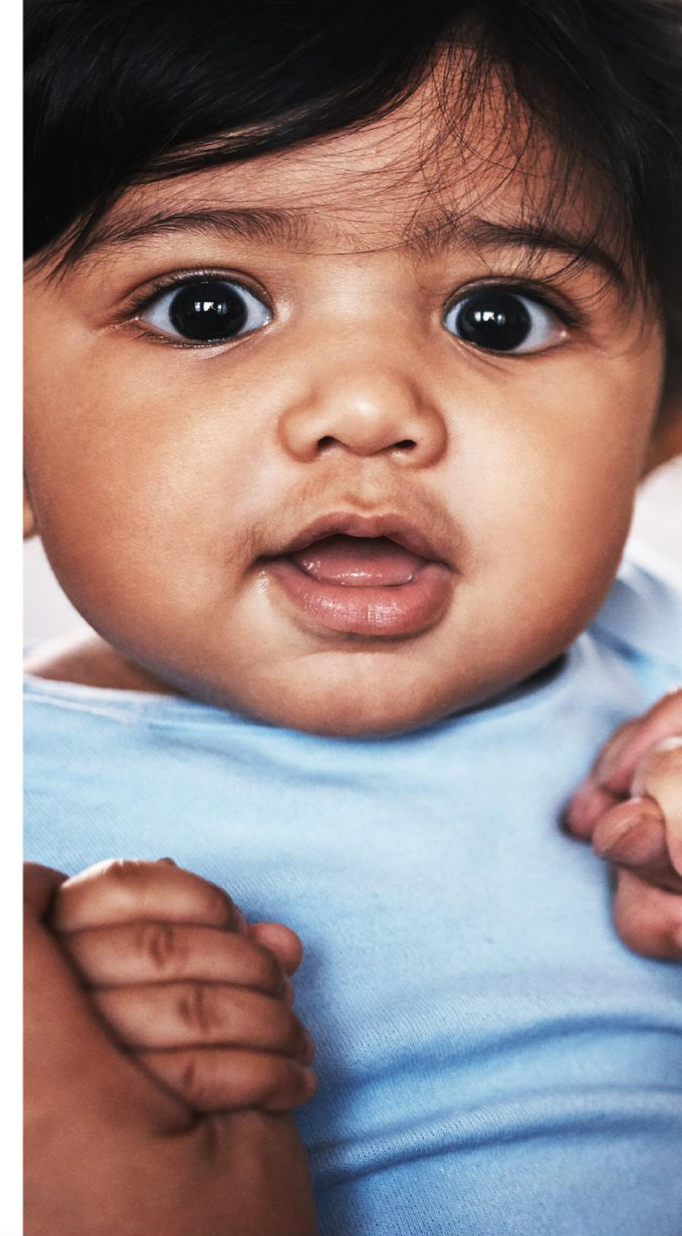
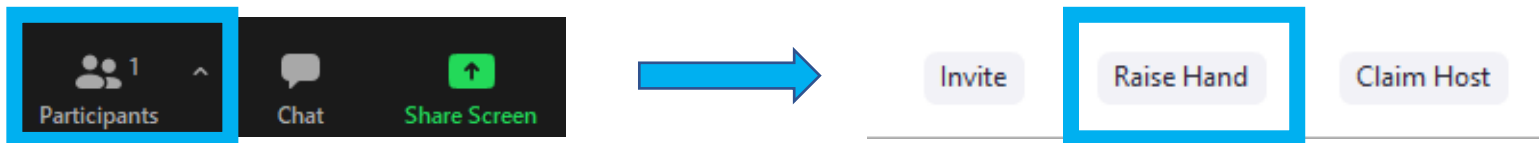
To mute/unmute and start/stop video:



To access the chat box:



To raise/lower your hand:



# Agenda

## PN-3 Peer Learning Network: How the Social Determinants of Health Impact Children and Families (Rural and Smaller Suburban Counties)

- Welcome and Overview (10 min)
- Greenbrier County, W.V. Presentation (15-20 min)
- Questions & Interactive Discussion (30 min)
- Conclusion (5 min)



# Understanding the Social Determinants of Health

The conditions in the environments where people are born, live, learn, work, play, worship, and age that affect a wide range of health, functioning, and quality-of-life outcomes and risks.

- Economic Stability
- Education Access and Quality
- Health Care Access and Quality
- Neighborhood and Built Environment
- Social and Community Context

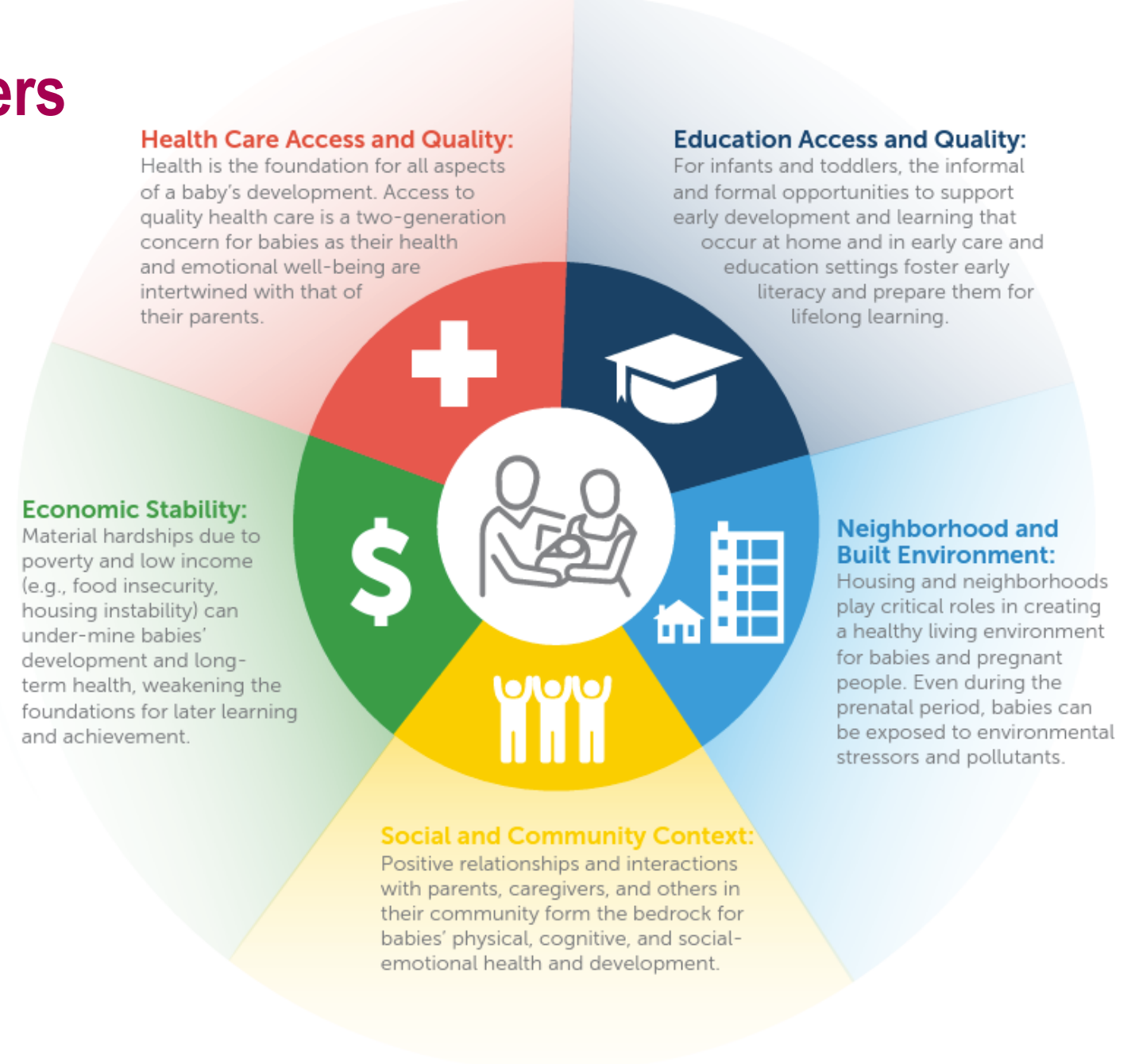
## Social Determinants of Health



# SDOH for Infants and Toddlers

## Further reading:

- [Using the State of Babies Yearbook 2022 to Illuminate the Social Determinants of Health for Infants and Toddlers | ZERO TO THREE](#)
- [Disparities in Housing, Health Care, Child Care, and Economic Security Affect Babies for Life | Center for American Progress](#)



Source: ZERO TO THREE

# Greenbrier County, WV

Tammy Tincher, County  
Commissioner

Sally Hurst, Marvel Center

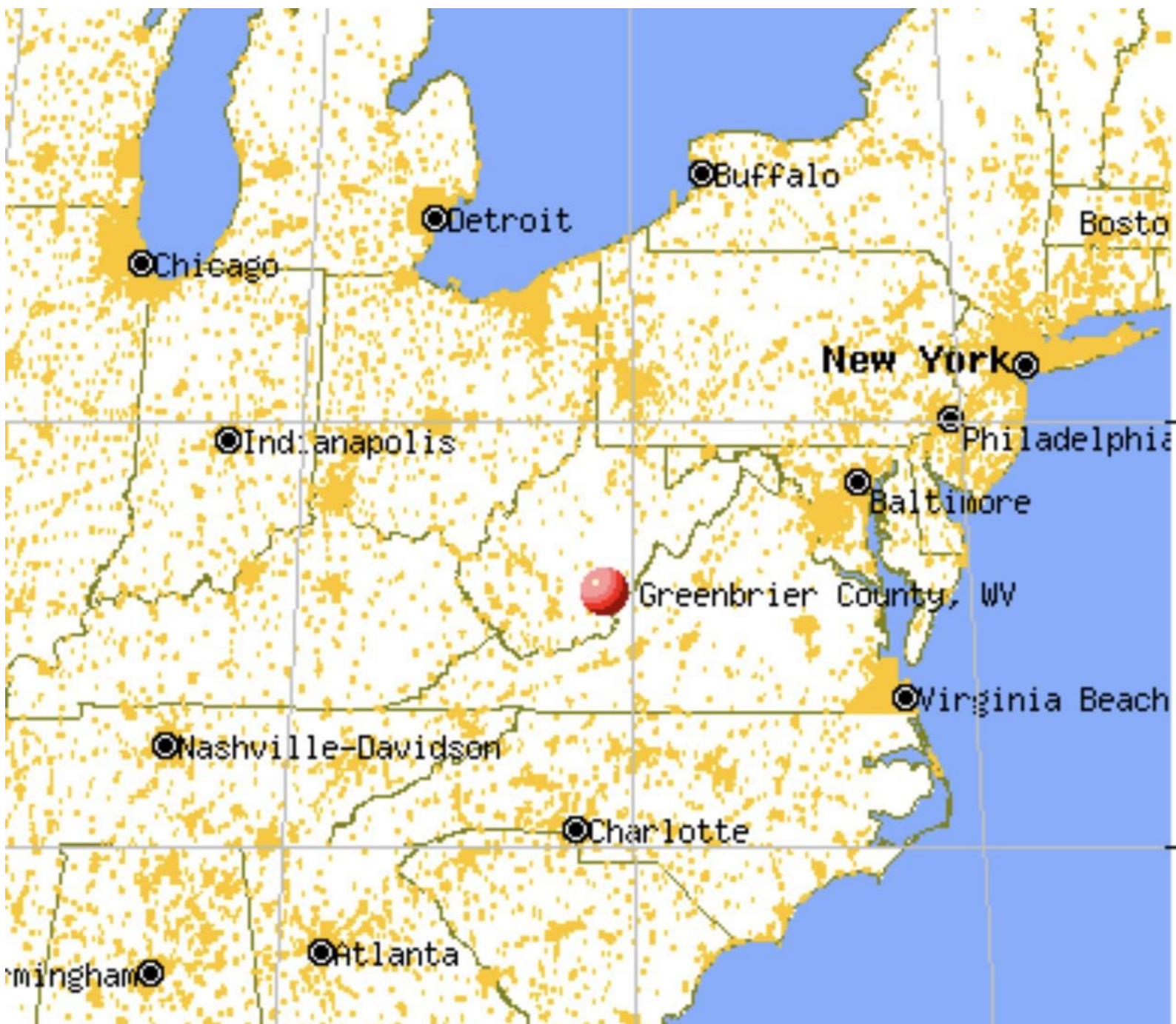
Julian Levine, WVSOM Center for  
Rural and Community Health and  
Greenbrier County Health Alliance

County Overview

Challenges and opportunities for  
children and families around SDOH

How is GBC addressing the SDOH that  
impact children and families?













THE  
**THRIFT STORE**  
304-438-8181

U  
☀️  
🌙  
🌸  
🌻

# GREENBRIER COUNTY, WV

COUNTY

ADD COMPARISON

2020 POPULATION

34,893

0.745% 1-YEAR DECLINE

US SENATOR



Joe  
Manchin

DEMOCRATIC PARTY

US SENATOR



Shelley  
Moore  
Capito

REPUBLICAN PARTY

2020 MEDIAN AGE

45.9

0.879% 1-YEAR INCREASE

2020 POVERTY RATE

17.5%

9.58% 1-YEAR INCREASE

2020 MEDIAN HOUSEHOLD INCOME

\$39,807

0.978% 1-YEAR DECLINE

2020 MEDIAN PROPERTY VALUE

\$123,000

0.806% 1-YEAR DECLINE



POPULATION  
& DIVERSITY



ECONOMY



CIVICS



EDUCATION



HOUSING &  
LIVING



HEALTH



# Patient to Clinician Ratios

Patient to Primary Care Physician Ratio

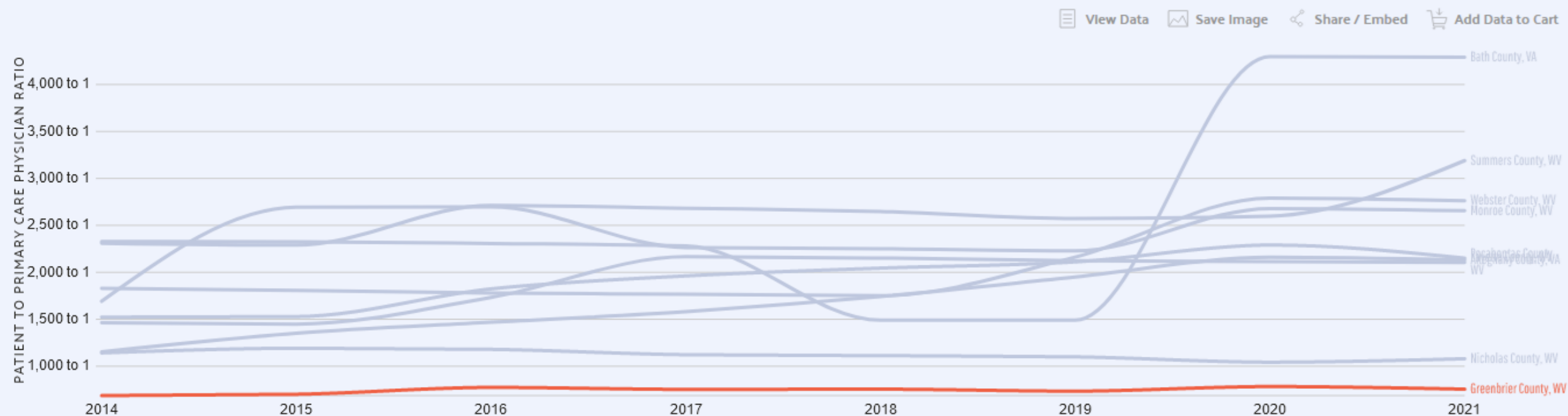
## 756 to 1

PATIENT TO PRIMARY CARE PHYSICIAN RATIO IN GREENBRIER COUNTY, WV

Primary care physicians in Greenbrier County, WV see an average of 756 patients per year. This represents a 3.57% decrease from the previous year (784 patients).

The following chart shows how the number of patients seen by primary care physicians has been changing over time in Greenbrier County, WV in comparison to its neighboring geographies.

Data from [the County Health Rankings & Roadmaps County Health Rankings](#).



## Health Outcomes

Length of Life

### INDICATOR

Premature Deaths

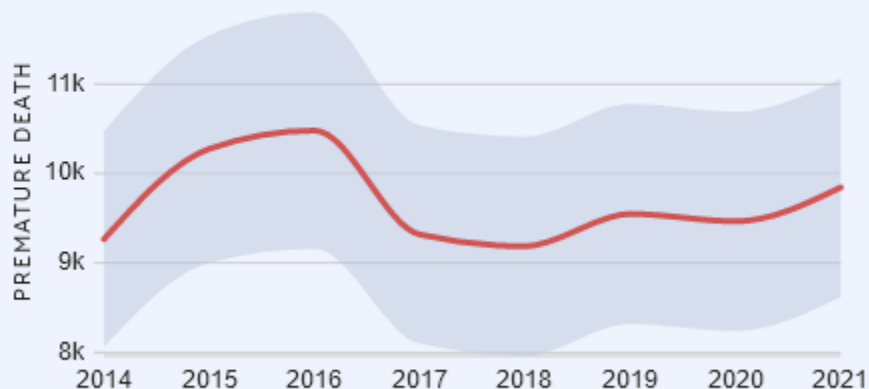
In 2021, the years of potential life lost before age 75 per 100,000 population (age-adjusted) was 9.84k in Greenbrier County, WV.

The graphic shows the trend of the indicator in Greenbrier County, WV.

Data from [the County Health Rankings & Roadmaps County Health Rankings](#).

[View Data](#) [Save Image](#) [Share / Embed](#) [Add Data to Cart](#)

### Years of potential life lost before age 75 per 100,000 population (age-adjusted)



## Health Behaviors

Diet and Exercise

### INDICATOR

Access to Exercise Opportunities

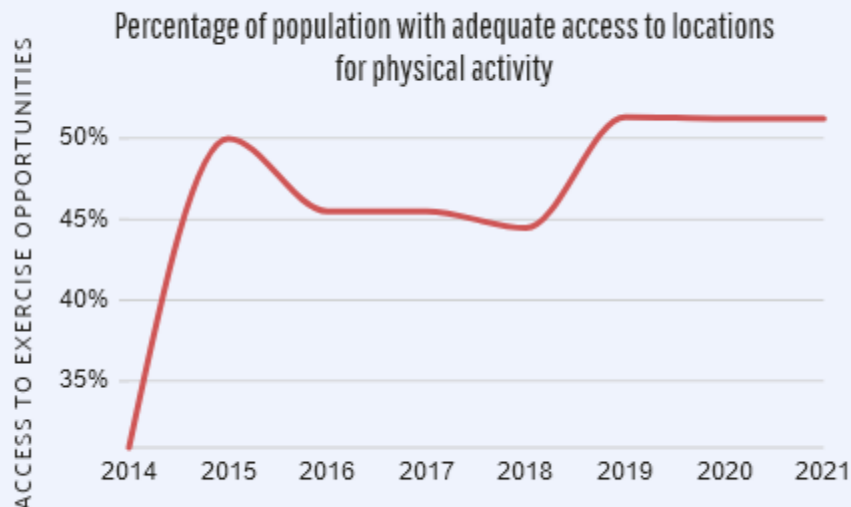
In 2021, the percentage of population with adequate access to locations for physical activity was 51.2% in Greenbrier County, WV.

The graphic shows the trend of the indicator in Greenbrier County, WV.

Data from [the County Health Rankings & Roadmaps County Health Rankings](#).

[View Data](#) [Save Image](#) [Share / Embed](#) [Add Data to Cart](#)

### Percentage of population with adequate access to locations for physical activity



## Health Behaviors

Diet and Exercise

### INDICATOR

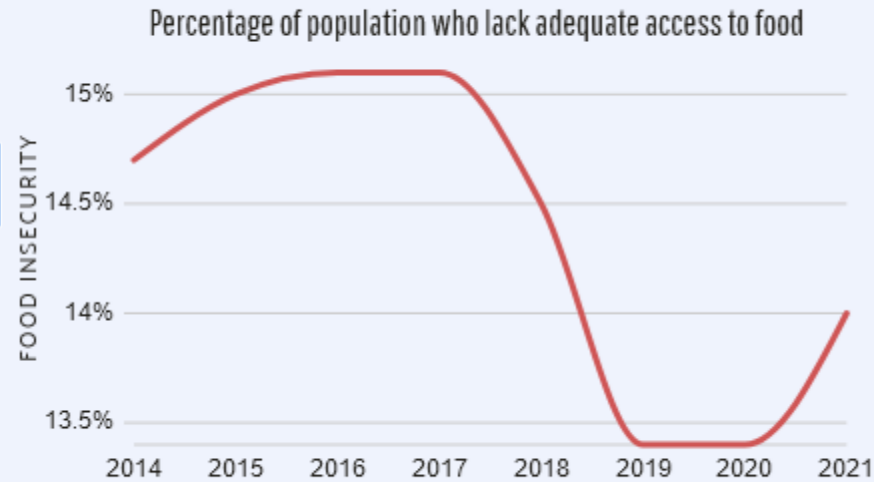
Food Insecurity

In 2021, the percentage of population who lack adequate access to food was 14% in Greenbrier County, WV.

The graphic shows the trend of the indicator in Greenbrier County, WV.

Data from [the County Health Rankings & Roadmaps County Health Rankings](#).

[View Data](#) [Save Image](#) [Share / Embed](#) [Add Data to Cart](#)



## Health Behaviors

Diet and Exercise

### INDICATOR

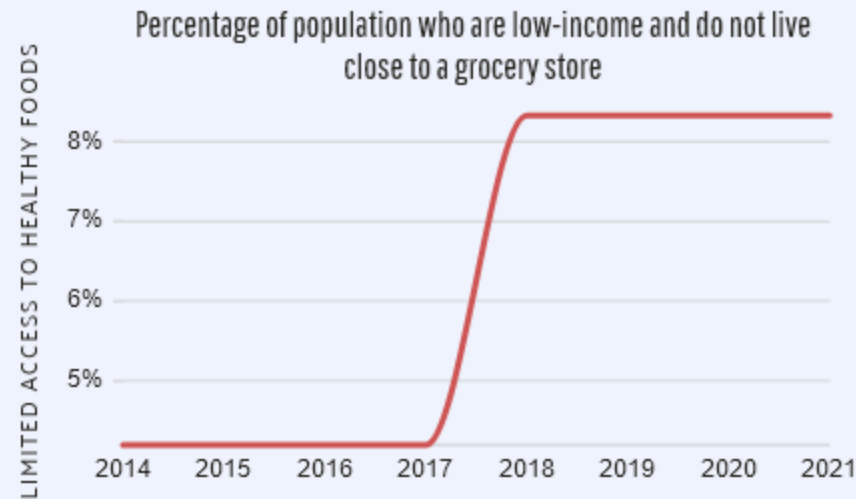
Limited Access to Healthy Food

In 2021, the percentage of population who are low-income and do not live close to a grocery store was 8.32% in Greenbrier County, WV.

The graphic shows the trend of the indicator in Greenbrier County, WV.

Data from [the County Health Rankings & Roadmaps County Health Rankings](#).

[View Data](#) [Save Image](#) [Share / Embed](#) [Add Data to Cart](#)



## Health Behaviors

[View Data](#) [Save Image](#) [Share / Embed](#) [Add Data to Cart](#)

Diet and Exercise

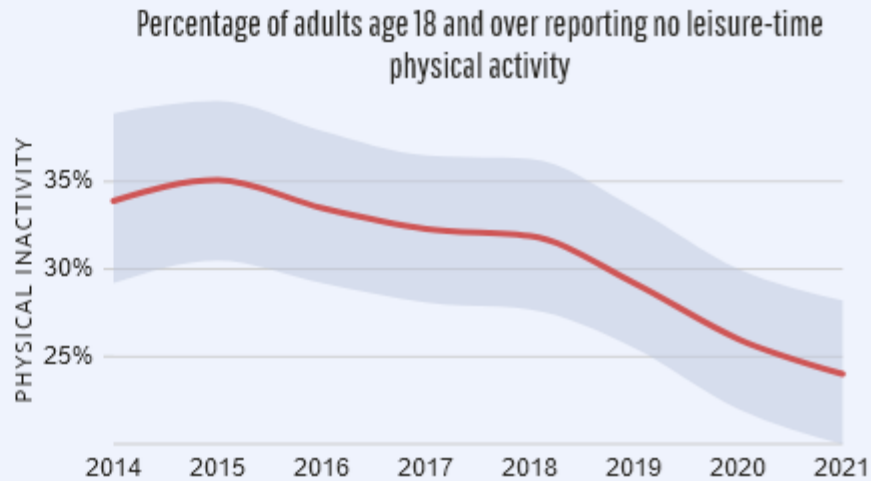
### INDICATOR

Physical Inactivity

In 2021, the percentage of adults age 18 and over reporting no leisure-time physical activity (age-adjusted) was 24% in Greenbrier County, WV.

The graphic shows the trend of the indicator in Greenbrier County, WV.

Data from [the County Health Rankings & Roadmaps County Health Rankings](#).



## Clinical Care

[View Data](#) [Save Image](#) [Share / Embed](#) [Add Data to Cart](#)

Access to Care

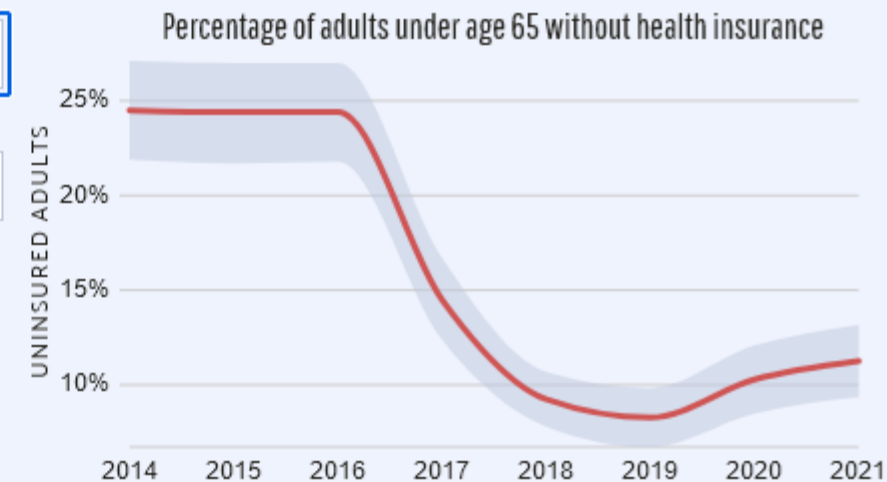
### INDICATOR

Uninsured Adults

In 2021, the percentage of adults under age 65 without health insurance was 11.3% in Greenbrier County, WV.

The graphic shows the trend of the indicator in Greenbrier County, WV.

Data from [the County Health Rankings & Roadmaps County Health Rankings](#).





# Wage Distribution

The closest comparable wage GINI for Greenbrier County, WV is from West Virginia.

0.441

2020 WAGE GINI IN WEST VIRGINIA

0.444

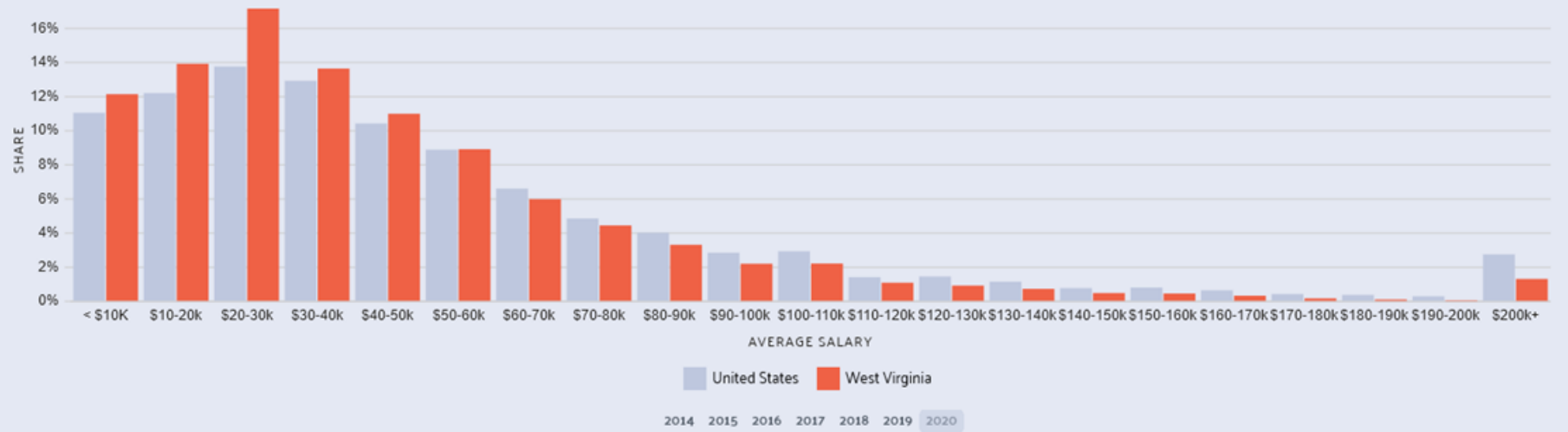
2019 WAGE GINI IN WEST VIRGINIA

In 2020, the income inequality in West Virginia was 0.441 according to the GINI calculation of the wage distribution. Income inequality had a 0.729% decline from 2019 to 2020, which means that wage distribution grew somewhat more even. The GINI for West Virginia was lower than than the national average of 0.478. In other words, wages are distributed more evenly in West Virginia in comparison to the national average.

This chart shows the number of workers in West Virginia across various wage buckets compared to the national average.

Data from [the Census Bureau ACS PUMS 5-Year Estimate](#).

[View Data](#) [Save Image](#) [Share / Embed](#) [Add Data to Cart](#)





**MEADOW  
RIVER VALLEY  
CAMPUS  
(FORMER  
RUPERT  
ELEMENTARY)**



# SOCIAL DETERMINANTS OF HEALTH AND THE MARVEL CENTER



## Social Determinants of Health



# NEIGHBORHOOD AND BUILT ENVIRONMENT



# EDUCATION ACCESS AND QUALITY



# ECONOMIC STABILITY



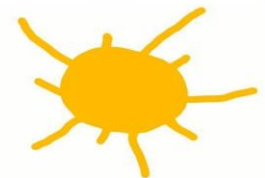
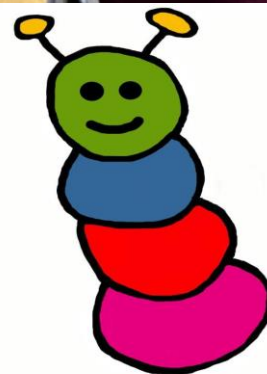
# HEALTH CARE ACCESS AND QUALITY



# SOCIAL AND COMMUNITY CONTEXT







The  
MARVEL  
Center

A Place to Play, Learn, and Grow



# Addressing challenges

1. Communication, Collaboration, Coordination
2. Grassroots-Grasstops-Anchors
3. Building and focusing on our strengths

## Orgs and Collaborations impacting SDOH

- Many nonprofits
  - Marvel, MRVA, Seed Sower, GCHA, Wellspring, ValleyWorks, Fruits of Labor,
  - too many to name
- Public Health Collaborations (e.g. Public Health 3.0)
  - For example: Rural Health Disparities: WVSOM/GCHealthDepartment/MTA
  - NACo Creative Counties Placemaking Challenge: Carnegie HallWV, GCHA, Tammy Tincher, Seed Sower



# Discussion Questions

- Upon understanding the SDOH domains, which domain is your county focusing on to address root cause issues impacting children and families in your county? How is your county advancing policies or investing in programs to address the SDOH?
- Who are your key partners in this work? Are you leveraging cross-agency coordination or public-private partnerships to address the full spectrum of SDOH?
- How have you communicated the importance of SDOH to elected officials and decision makers? To the general public?
  - What was the outcome? Did you see change in your system and behaviors as a result of your efforts to enhance education, public will and awareness?



# Contact Us

[www.countiesforkids.org](http://www.countiesforkids.org)  
[info@countiesforkids.org](mailto:info@countiesforkids.org)

Arabella Pluta-Ehlers, Senior Program Manager  
202.942.4227 | [aplutaehlers@naco.org](mailto:aplutaehlers@naco.org)



# Thank you!



© NATIONAL ASSOCIATION OF COUNTIES  
RESEARCH FOUNDATION, INC.

660 North Capitol St. NW | Suite 400 | Washington, D.C. 20001  
202.393.6226 | [www.NACo.org](http://www.NACo.org)

[fb.com/NACoDC](https://fb.com/NACoDC) | [@NACoTweets](https://twitter.com/NACoTweets)

[youtube.com/NACoVideo](https://youtube.com/NACoVideo) | [www.NACo.org/LinkedIn](http://www.NACo.org/LinkedIn)