

CHILD CARE AND COVID-19

Three diverse babies are sitting on a white surface. The baby on the left is light-skinned with short blonde hair, wearing a white onesie. The baby in the middle is of East Asian descent with dark hair, also wearing a white onesie. The baby on the right is Black with short dark hair, wearing a white onesie. They are all looking towards the right side of the frame.

FEDERAL RESOURCES
& BEST PRACTICES FOR
COUNTY LEADERS

June 17, 2020 | 2:00 PM - 3:00 PM ET | National Association of Counties (NACo)



AGENDA

HON. DEBBIE LIEBERMAN | Commissioner, Montgomery County, Ohio and
Chair, NACo Human Services and Education (HSE) Policy Steering Committee

PAULA DANERI | Early Childhood Policy Professional Staff, U.S. House
Committee on Education and Labor

CRYSTAL KELLY | Director of Strategic Initiatives, Children's Council of
Watauga County, N.C.

KARA WADDELL | President & CEO, Child Care Associates, Tarrant County,
Texas

Q & A | Email questions to Rbrown@naco.org

PAULA DANERI

**Early Childhood Policy
Professional Staff**

U.S. House Committee
on Education and Labor



CRYSTAL KELLY

**Director of Strategic
Initiatives**

Children's Council of
Watauga County, N.C.





WATAUGA COUNTY, N.C.

POPULATION: 53,421

Child Care and COVID-19

State Level Response



Public School Closures
March 14th



Department of Health and
Human Services released a
memo for Health and
Operational Guidance.
March 23rd



Governor issued State Stay
at Home Orders
March 27th

Local Response



Pop-up childcare for
hospital employees



Landscape study to
determine what centers
were staying open



Liaison between child
care centers and
state/local resources

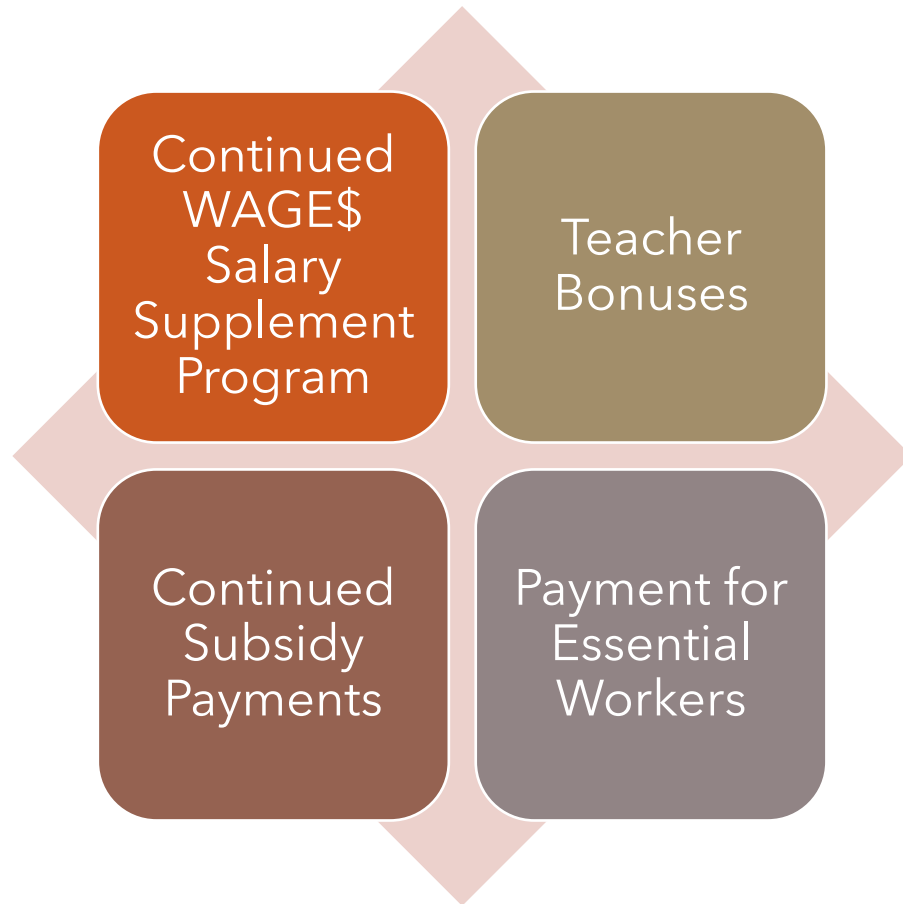


Uninterrupted funding

Child Care – An Essential Service

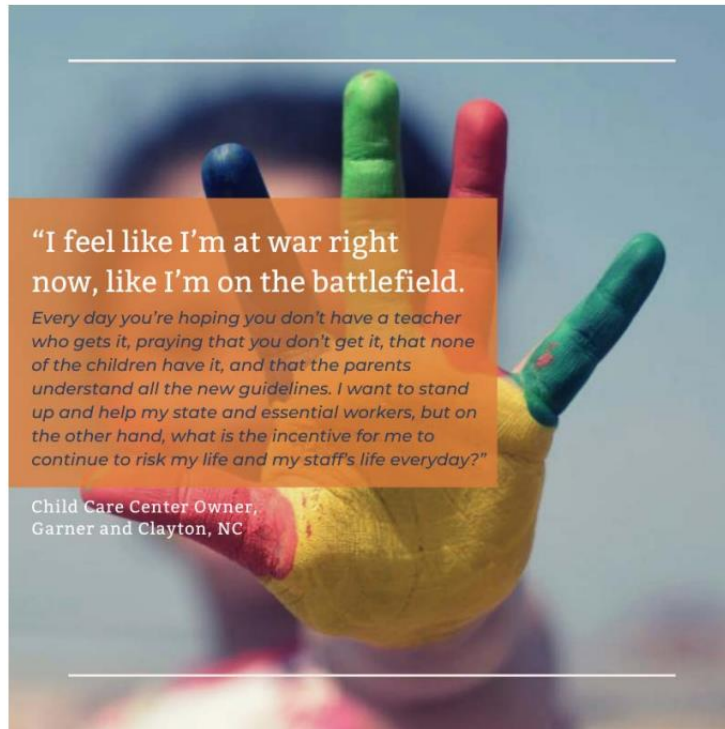


- Child care centers must submit application to remain open and must meet enhanced requirements (about 66% in the state applied to stay open).
- State hotline created to connect families with child care programs that have agreed to meet updated health, safety and operational guidelines.
- For those essential workers who need it, financial assistance for emergency child care is available.



CARES Act Funding
\$114 million through
expansion to the Child
Care Development Block
Grant (CCDBG)

Key Concerns





Where do we go from here?

- Establishment of child care as an essential part of a healthy economy and infrastructure
- Continued advocacy for increased compensation for early childhood workforce
- Increased support and resources to ensure health and safety requirements can be met
- Public investments to sustain the early childhood system through this crisis and beyond

Tarrant County, Texas COVID-19 Response



Kara Waddell
President-CEO
Child Care Associates

Tarrant County, Texas

- **Population of 2 million** residents including the 12th largest city in the U.S. (Fort Worth) and the 48th largest city in the U.S. (Arlington)
- **Local policies** included stay-at-home orders at state and local level, declared states of emergency and now the state is in Phase III of re-opening
- **The state of child care:**
 - The state created a Frontline Child Care Task Force – with agency leaders on one and advocates on another to guide response
 - Emergency child care rules – but pretty minimal.
 - Child care was open throughout COVID but only for essential workers
 - Re-opening child care for all families began on May 25
 - Suggested Texas Minimum Health Protocols
 - Child care subsidy covered all absences, all parent co-pays and eventually paid 25% higher rates when open for only essential workers

Tarrant County Child Care

- **Within days of declared state of emergency**, Tarrant County named a COVID-19 Child Care Task Force with child care licensing, county healthy, child care subsidy assistance program and Child Care Associates
 - Child Care Response Network – broadened to providers, nonprofits, community leaders and philanthropy
 - School-Age Care Network – for coordinating school-age care
 - City of Fort Worth – Education and Child Care Task Force (*after 4-6 weeks into COVID*)
- **Developed an early priority:** To ensure quality provision of care to children of essential workers
 - Decided to build on the existing infrastructure of qualified staff and child-designed facilities
 - *KEY: County Judge convened two critical superintendents and the child care task force – and we early on decided to not use schools for emergency care.*
- **Released a joint letter to groceries and big box stores** asking they allow child care providers to purchase 4x restricted amounts.

Child Care Search Tool for Essential Staff

Coordinated COVID-19 Response for Child Care:


Former classroom coaches now at home were designated to make regular calls to child care providers to identify all available child care spots and submitting status updates using a common web-based form. Provider status and the aggregate status of current community capacity is being tracked in “real-time” on a web-based data tool.

The **objective** of the system is to be able to match-make capacity with need in our community for essential workers.

Envisioned a searchable platform for FINDING care “real-time” while also providing critical DATA needed to assess the capacity of child care

Find! Website

<https://find.bestplace4kids.com/families>



1 years 9 months - 4 years 11 months old 12 E 1st St, Fort Worth, TX

Search your results

OPEN SPOTS

Montessori At Sundance Square
201 Jones St , Fort Worth, 76102

Infant, Toddler, Preschool, School age

Monday - Friday, 7:00AM - 6:00PM

OPEN SPOTS

Rosie K Mauk Cdc
512 W 4 Th St , Fort Worth, 76102

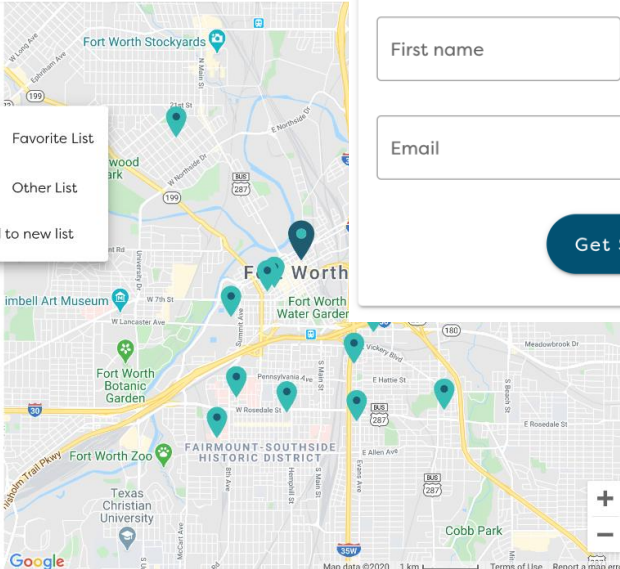
Infant, Toddler, Preschool, School age

Monday - Friday, 6:30AM - 6:00PM

★★★★★

OPEN SPOTS


First United Methodist Day School



Favorite List

Other List

+ Add to new list.



**THE BEST PLACE
FOR KIDS!™**

Find available child care near you!

First name

Last name

Email

Get Started

Daily Status Report

All information as of 4:00PM on June 15, 2020

Reporting Status

	#	%
Reporting	866	78%
Not Reporting	240	22%

Provider Status

	#	%
Open, providing care	752	68%
Not operating	354	32%
Unknown	0	0%
Total	1,106	

Open providers	#	%
Center providers	372	49%
Family home providers	380	51%
Willing to extend hours	82	11%

Available Slots at Open Sites

Tarrant County

	sites	slots
Infant	296	1,415
Toddler	380	2,368
3-5 years old	383	3,216
School-aged	312	2,840
Total		9,839

COVID19 Applications and Enrollments

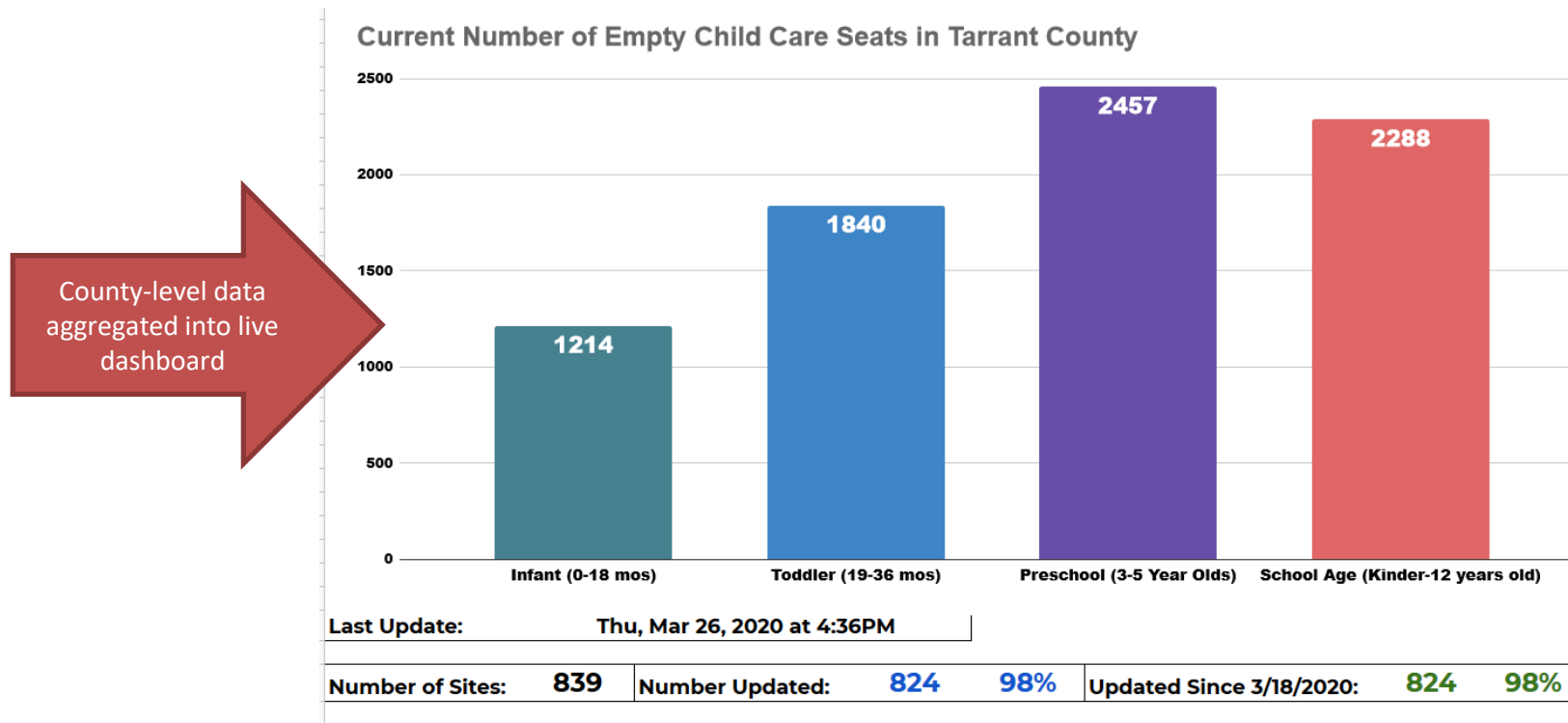
	Apps	Denied*	Contacts	Pending	Enrolls
April 2020	1,101	355	811	-	521
May 2020	868	308	655	2	809
June 2020					41
Total	1,969	663	1,466	2	1,371

*Non-essential worker application

Applications by Industry

	#	%
Healthcare	654	33%
Local State Govt.	140	7%
Restaurant, Grocery, Food	222	11%
First Responder	78	4%
Gas Station	23	1%
Childcare worker	272	14%
Mail Delivery	72	4%
Military	19	1%
Maintenance	2	0%
Finance	96	5%
Construction	17	1%
Transportation	45	2%
Warehouse	84	4%
Leasing Agent	11	1%
Other	239	12%

Building the Dashboard



Free Child Care for Essential Staff

Tarrant County CCA-CCMS

On March 24, 2020, Texas Workforce Commission (TWC) authorized Tarrant County Workforce Board to implement emergency child care in response to the global pandemic of COVID-19 using its current Child Care and Development Block Grant (CCDBG) funding. This assistance will help support the cost of direct care for workers deemed essential during the COVID-19 emergency for a three-month period. (Ended June 1, 2020)

CCA-CCMS processed over 1,900 applications with 1,375 children of essential staff successfully placed in emergency child care with three months of free child care.



1,375
Children

Distributing PPE for child care providers



Coordinated delivery of COVID-19 Response Care Packages for Child Care: Designated staff to organize deliveries and pick up times for child care provider. Care packages included gloves, hand sanitizer, digital thermometers, spray bottles and other hard to find PPE.

CARES Act Funding



Request for CARES Funding – Fort Worth and Tarrant County

Amount of Request: \$3,556,209

Organizational Background:

Child Care Associates (CCA) has served our communities' child care and early education needs since 1968. Formed by the United Fund in response to emerging community need, Child Care Associates was designed to be a community agency responsive to changing issues of child care facing families in Tarrant County. In 2018, CCA directly delivered early education and care services to 2,400+ infants, toddlers and preschoolers living at federal poverty levels. CCA also served 12,459 children through child care subsidy assistance funding (CCMS) to help low-income working parents cover the high cost of child care.

As the largest child development agency in Tarrant County, Child Care Associates is the de facto voice of child care in the region managing the supply of child care available for families and helping improve the quality of child care operators across the county. CCA operates the Texas Rising Star (TRS) program that systematically improves and assesses the quality of child care subsidy providers. Tarrant County now has nearly 200 licensed, quality child care programs with a TRS star-rating.

COVID-Response:

Child Care Associates has been well-positioned to coordinate and support the 1,124 licensed child care providers in Tarrant County during the COVID-19 response period.

When asked by the county and city officials to step up its leadership, CCA immediately launched the Tarrant County Child Care Task Force with the purpose of ensuring a quality supply of child care services during COVID and to help restore child care to meet the family demand for child care post-COVID. CCA has highlighted the critical response we coordinated during COVID-19 to date (see Appendix 1).

Urgent Community Need for Child Care:

Quality child care is needed to support the developmental needs of young children and the occupational needs of working parents. In recent years, Tarrant County child care already experienced a loss of critical revenue as the free Pre-K in our schools had negatively impacted the child care revenue previously drawn serving preschoolers. During COVID, child care has responded to the child care needs of essential workers but forced to operate at a loss for months with the increased need for sanitation, smaller group sizes to protect children and lost revenue from working parents. As our economy re-opens, child care is a critical link needed to ensure Texas families are able to return to work. However, experts predict a slow return of child care demand adding to child care programs' operational loss. As a community, we need to help calibrate supports and economic development to child care programs at sufficient levels to offset their losses.

Our organization put forward a request for both city and county funding for:

- Economic supports for child care business sustainability
- Health, sanitation and PPE
- Diapers & formulas for families in need
- Support for families in need of child care
- Leadership and management of the child care response

COMING SOON!!



High-touch business support for child care businesses

- Pairing up resources at the Small Business Development Center
- SBDC partners with the U.S. Small Business Administration, Tarrant County College and governments to build businesses
- Pairing up child care mentors and business mentors to hand-hold business supports and maintain our supply of quality providers

COUNTIES FOR KIDS

Counties Getting Started: A Prenatal-to-Three Guidebook

Prenatal-to-Three County Leader Toolkit

The National Collaborative
for Infants & Toddlers



The National Collaborative for Infants & Toddlers

THE ABCs OF PRENATAL-TO-THREE FOR COUNTY OFFICIALS

The daily decisions that counties make not only shape community conditions but often set a trajectory for success for their youngest residents. When infants are born healthy into safe and nurturing environments with parents who are well-supported, a whole community can benefit from improved social, economic and health outcomes.

County officials play a key role in helping young children to grow, learn and thrive - often advocating on their behalf to prioritize and promote the programs and policies necessary to support healthy development. Whether your county is just starting out or looking to expand upon existing efforts, this resource, 'The ABCs of Prenatal-to-Three,' offers policymakers a range of ideas for prioritizing investments that set young children on a path to success.

While there is no set process for advancing a prenatal-to three agenda, the National Association of Counties Research Foundation (NACoRF) has learned from counties across the nation about some helpful ways to get started. No matter where you are in your journey, NACoRF can support you by providing relevant early childhood resources and connecting you to best practices and local leaders who have made meaningful strides in their community.

QUESTIONS FOR COUNTY LEADERS TO CONSIDER

- **Is there strong leadership for infants and toddlers in your county?** One way county boards can demonstrate bi-partisan community support for their youngest residents is through a public statement of support.
- **Does your county have an active early childhood stakeholder group?** Connecting to or convening a diverse stakeholder team can build broad-based community support and cultivate champions for young children. Counties may establish a new or identify an existing group that is committed to shared vision and developing a strategic plan of action for children from prenatal to age three. To further support their cross-sector stakeholder group, counties may explore opportunities for establishing a dedicated early childhood system coordinator to strategically drive initiatives in the community.

- **Does your county have a shared vision for improving school readiness that includes infants and toddlers?** Oftentimes, planning for kindergarten readiness begins at preschool, rather than prenatally or at birth. County leaders can work with their early childhood stakeholder group to develop a shared vision and help to support the full continuum of a child's development by facilitating the integration of prenatal to three stakeholders and priorities within broader conversations around school readiness.



Q & A

- Email questions to Rashida Brown, Associate Program Director of Children, Youth and Families, National Association of Counties (NACo): rbrown@naco.org

ADDITIONAL RESOURCES

- [National Association of Counties COVID-19 Resources](#)