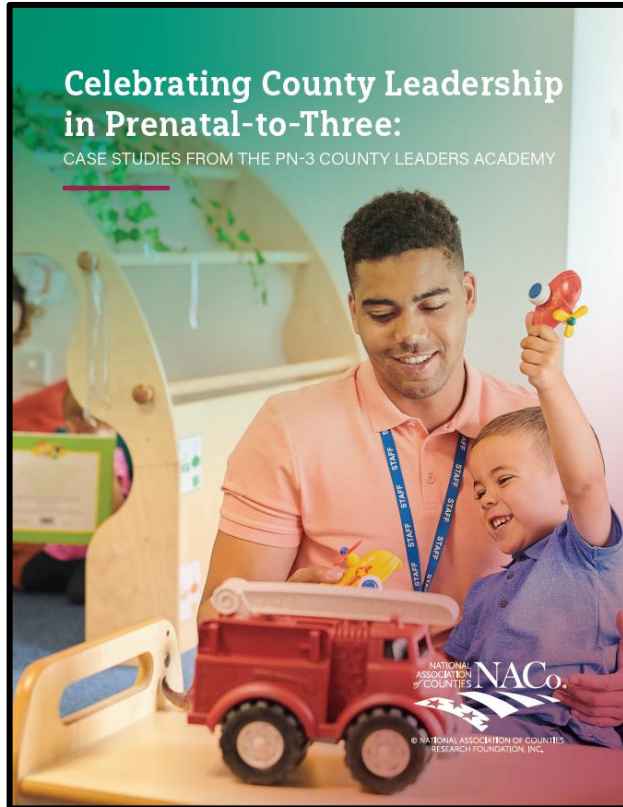


Counties for Kids

The Latest from Counties for Kids



Local Strategies for Preventing Adverse Childhood Experiences

Feb 1, 2023 · Infant/toddler mental health



Open for Business: Strategies for Engaging the Business Community in Local Child Care Efforts

Nov 29, 2022 · Child care

Celebrate the Week of the Young Child with Counties for Kids!

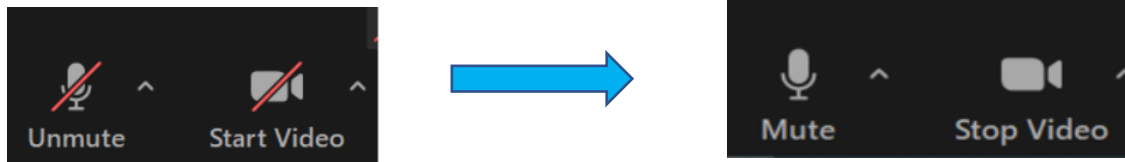
The Week of the Young Child is an annual celebration sponsored by the National Association for the Education of Young Children, the world's largest early childhood education association. The purpose of the Week of the Young Child (WOYC) is to focus public attention on the needs of young children and their families and to recognize the early childhood programs and services that meet those needs.

During this WOYC, we invite all county leaders to join the Counties for Kids network of champions and learn local approaches for advancing PN-3 policies, programs and systems. We encourage you to use the resources below to share how your county is celebrating young children during WOYC and year round!

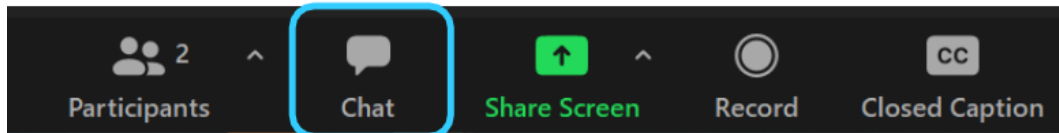


Instructions

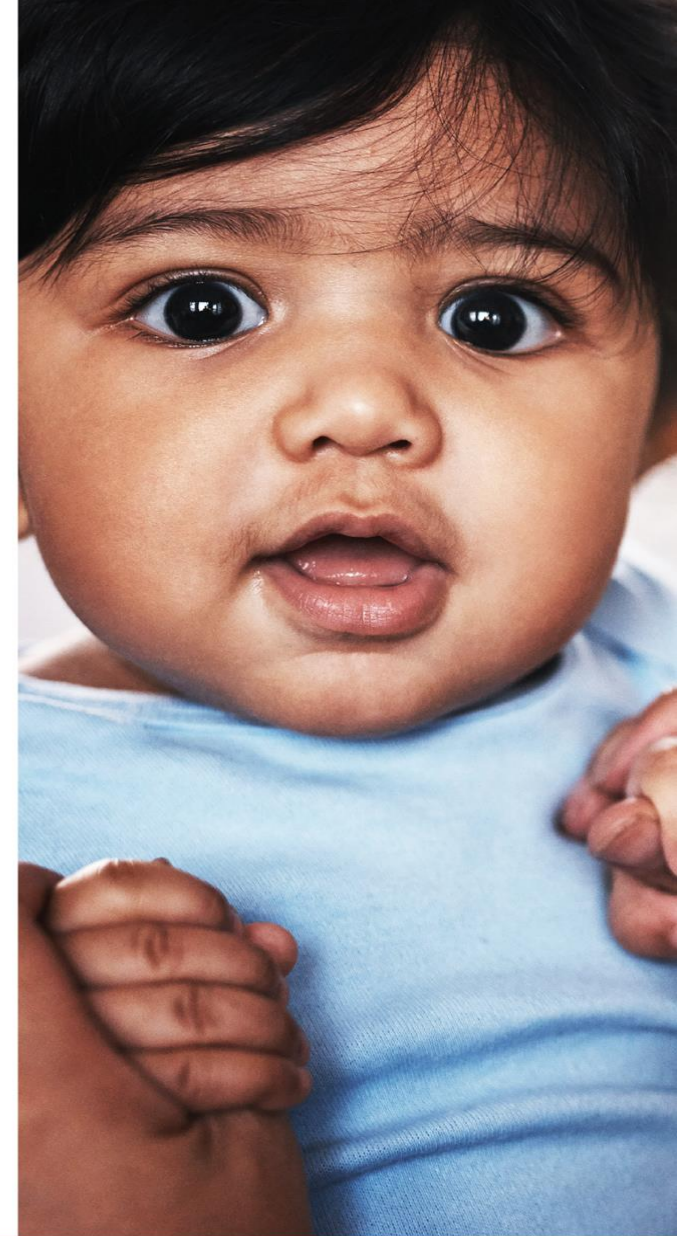
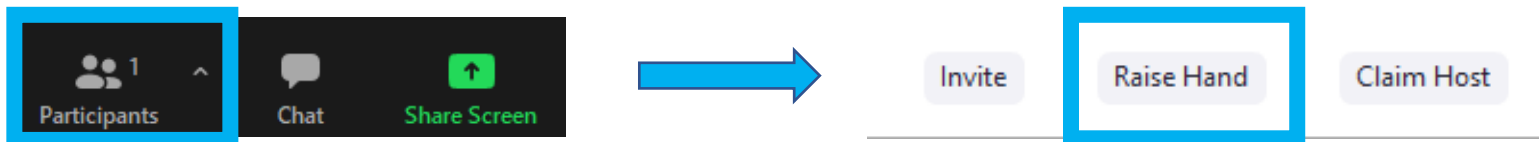
To mute/unmute and start/stop video:



To access the chat box:



To raise/lower your hand:



Agenda

PN-3 Peer Learning Network: Long-Term Strategies for Strengthening the Child Care Workforce (Rural and Smaller Suburban Counties)

- Welcome (5 min)
- Mesa County, Colo. Presentation (15 min)
 - Stephanie Bivins, Director, Mesa County Partnership for Children and Families
- Questions & Interactive Discussion (35 min)
- Conclusion (5 min)





STRENGTHENING THE EARLY CHILDHOOD EDUCATION **WORKFORCE**

RURAL RESPONSE IN MESA COUNTY, COLORADO

STEPHANIE BIVINS, MEd

DIRECTOR

PARTNERSHIP FOR CHILDREN & FAMILIES



STEPHANIE BIVINS

Partnership for Children and Families
stephanie.bivins@mesacounty.us
970-901-1377

PARTNERSHIP FOR CHILDREN & FAMILIES

MICHELLE REEVES



CHILDCARE
NAVIGATOR

JUDY SEGREST



ECE WORKFORCE
COORDINATOR

CARLEE RAFFENSPERGER



QUALITY
IMPROVEMENT
NAVIGATOR

DAISY THOMSON



QUALITY
IMPROVEMENT
NAVIGATOR

Our team envisions a community with **high-quality early childhood care and education** that better the lives of young children.



MESA COUNTY, CO



**MORE THAN HALF
(55.6%) OF MESA
COUNTY
WORKERS EARN
LESS THAN \$17.50
PER HOUR,
AN ESSENTIAL
WAGE FOR
HOUSEHOLD
STABILITY.**

**KINDERGARTEN
READINESS VARIES
BY AS MUCH AS
80% AMONG
DIFFERENT
ELEMENTARY
SCHOOLS IN
MESA COUNTY.**

**1 IN 3
HOUSEHOLDS
HAVE
CHILDREN
UNDER 18
YEARS OLD
LIVING AT
HOME.**

POPULATION

151K

MEDIAN HOUSEHOLD INCOME

\$55,579

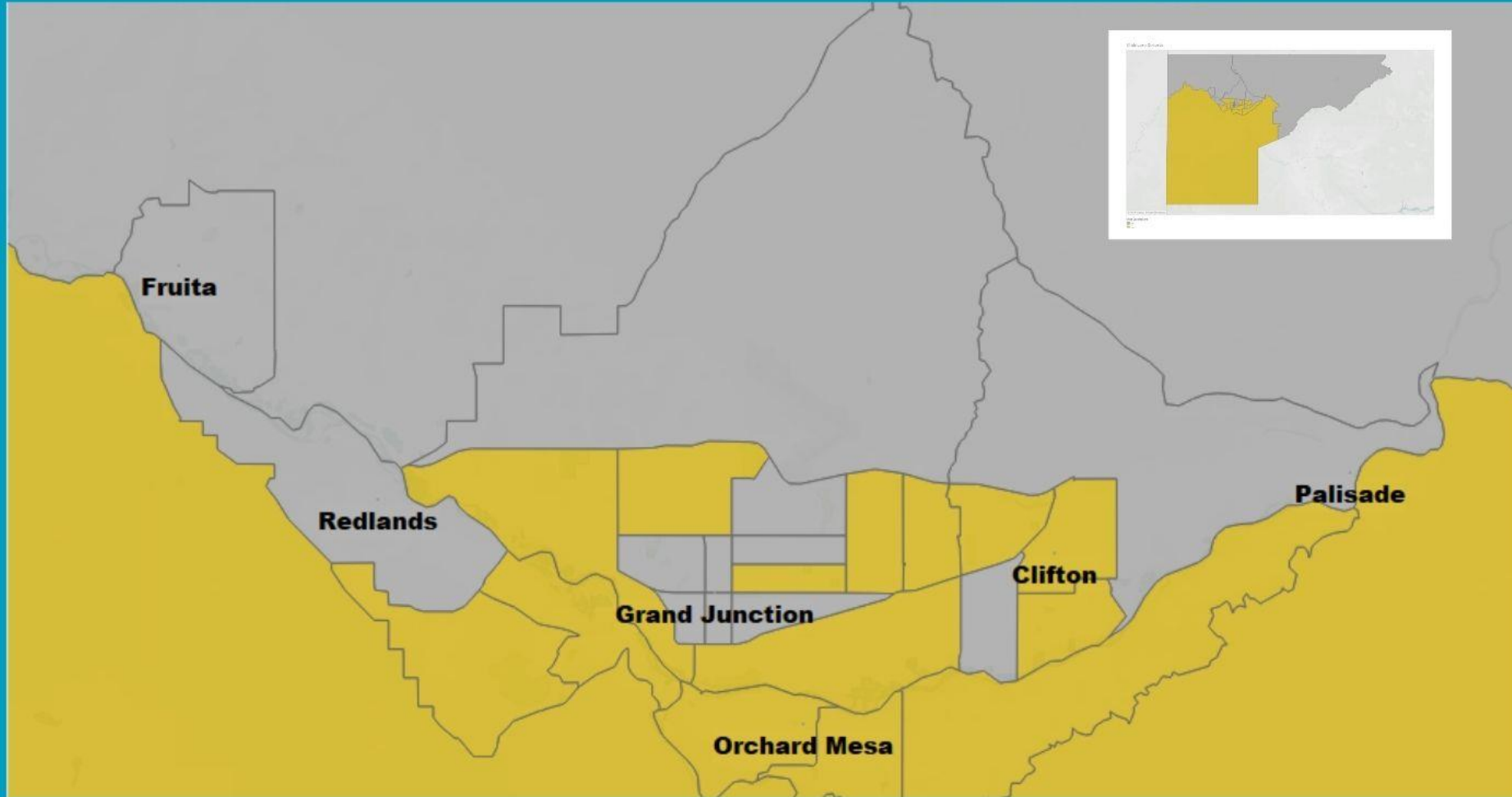
SNAP USAGE

11%

HIGH SCHOOL DIPLOMA

91.2%

MESA COUNTY, CO



**CHILDCARE
DESERT**

CHILD CARE DESERT BY CENSUS TRACT

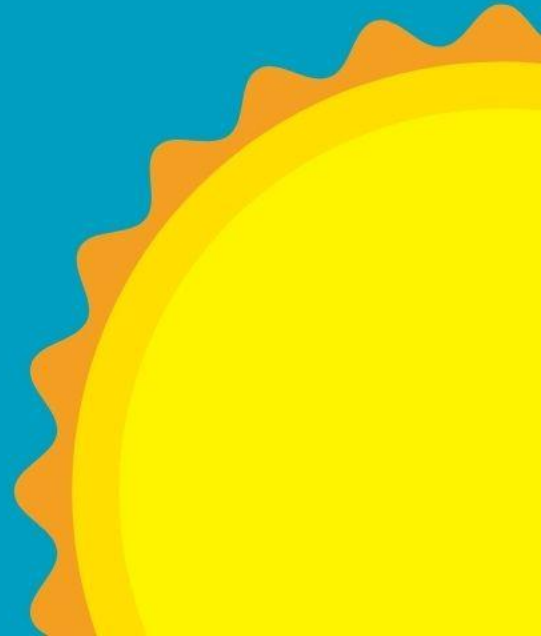




IDENTIFYING PROBLEMS

- ▼ **LOW WAGES & SHORTAGE OF WORKERS.**
- ▼ **SHORTAGE OF OPENINGS.**

**MESA COUNTY LICENSED EARLY
CHILDHOOD CLASSROOMS
WERE CONSISTENTLY
UNDERSTAFFED BY 25-30%.**



STRATEGIES



STRENGTHENING THE EARLY CHILDHOOD EDUCATION **WORKFORCE**



INCREASE QUALITY.



GROW AVAILABILITY.



**GETTING FUNDS TO
FACILITIES.**



SUSTAINABILITY.

WHAT'S NEXT

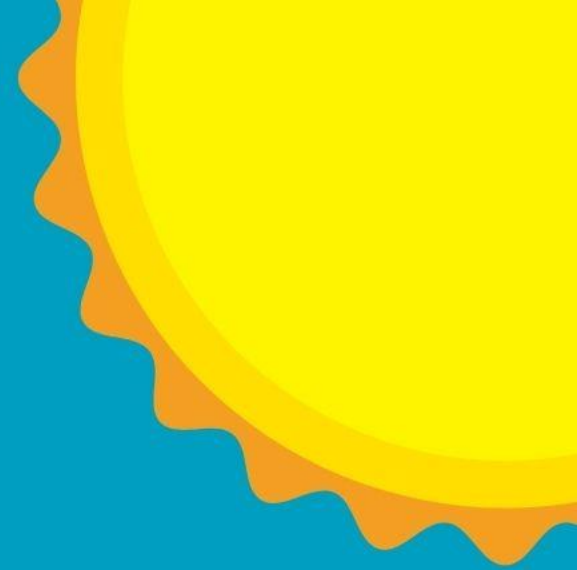




**EARLY CHILDHOOD
EDUCATION CENTER
AND TRAINING HUB**

FEATURES

- 154 child care spots offering ample CO Child Care
- Assistance Program (CCCAP) spots
- Serving infants, toddlers, preschoolers, and school-age children
- Kitchen for healthy child care meals and snacks Indoor gross motor skills area
- Space for child evaluations and screenings Observation rooms for workforce training
- Office space for early childhood support services including Partnership for Children and Families
- Meeting space for childhood workforce training





RDg... ECE CENTER ENTRY
PLANNING & DESIGN
 R3304 R03.01 Design Development June 27, 2022 IMAGES MAY NOT FULLY DEPICT MATERIALS & PATTERNS SCALE
 ECE CENTER, EC TRAINING CENTER, AND COMMUNITY HALL | INTERIOR | EXTERIOR PRESENTATION
 MESA COUNTY



ECEC INFANT CLASSROOM
 AREA A



ECEC PRESCHOOL CLASSROOM
 AREA A



ECEC ACTIVITY
 AREA A

SUGGESTIONS FOR YOUR COMMUNITY



**CHANGE THE
CONVERSATION.
MAKE IT ABOUT
ECONOMIC GROWTH.**

**EXPAND YOUR VISION
BEYOND TRADITIONAL
FACILITIES.**

**SUSTAINABILITY IS
CRITICAL. TALK WITH
EMPLOYERS AND
OTHER FUNDERS WHO
HAVE A LONG-TERM
STAKE IN THE SUCCESS
OF CHILD CARE.**

THANK YOU.



Discussion Questions

- What do you know about the early childhood workforce in your county?
- What are the major challenges for providers in your county? What supports do providers have access to in your county (e.g., shared services, education supports)?
- Based the information that you've heard today, is your county or state doing similar work to build and maintain the early childhood workforce?
- Do providers in your county reflect the diversity of your community? Can parents find care in that meets their linguistic and cultural needs and preferences?
- Has your county used CARES funding or American Rescue Plan Act funding to support the child care workforce? (i.e., operating grants for child care providers, bonuses, wage increasements, access to professional development)



Contact Us

www.countiesforkids.org
info@countiesforkids.org

Arabella Pluta-Ehlers, Senior Program Manager
202.942.4227 | aplutaehlers@naco.org



Thank you!



© NATIONAL ASSOCIATION OF COUNTIES
RESEARCH FOUNDATION, INC.

660 North Capitol St. NW | Suite 400 | Washington, D.C. 20001
202.393.6226 | www.NACo.org

fb.com/NACoDC | [@NACoTweets](https://twitter.com/NACoTweets)
youtube.com/NACoVideo | www.NACo.org/LinkedIn