



2017
poverty summit

and Fall Board of Directors Meeting

TARRANT COUNTY, TEXAS

DECEMBER 7-9





welcome

Greetings,

As Tarrant County Commissioner and President of the National Association of Counties (NACo), it is my honor and privilege to welcome you to the Poverty Summit and 2017 Fall Board of Directors Meeting.



This year, my presidential initiative revolves around the critical role counties play in breaking multi-generational cycles of poverty, especially with our children. Growing up in poverty is an adverse childhood experience that can impact children for the rest of their lives; in fact, one in five grows up in poverty in a majority of our counties. The way to break generational poverty is to start with children from ages zero to three. This Summit will raise awareness about the issue through some of Tarrant County's best practices in combating poverty.

We welcome you to our community! Best wishes for a very enjoyable and successful event.

Sincerely,

Roy Charles Brooks

Roy Charles Brooks
President, National Association of Counties
Commissioner, Tarrant County, Texas



event location



agenda

THURSDAY, DECEMBER 7

7:00 A.M. – 4:00 P.M. REGISTRATION OPEN

[Trinity Ballroom Foyer]

7:30 A.M. – 8:00 A.M. NETWORKING BREAKFAST

[Trinity Ballroom Foyer]

8:00 A.M. – 8:15 A.M. WELCOME BY NACo PRESIDENT

[Rio Grande Room]

- **The Honorable Roy Charles Brooks**,
Commissioner, Tarrant County, Texas

8:15 A.M. – 9:15 A.M. CROSS-SECTOR EFFORTS TO IMPACT STUDENT ACHIEVEMENT

[Rio Grande Room]

Impacts of poverty on student learning and achievement:

Third grade is a crucial year when students make the leap from learning to read, to reading to learn. Research shows that children who are not reading by the end of third grade are unlikely to graduate high school and will have more behavioral and social problems. The public and private sector have joined forces in Fort Worth to ensure that 100 percent of third graders are reading at grade level by 2025.

- **The Honorable Roy Charles Brooks**;
Commissioner, Tarrant County, Texas – Facilitator
- **Ms. Mattie Parker**; Chief of Staff, City of Fort Worth Mayor Betsy Price
- **Dr. Kent Paredes Scribner**; Superintendent, Fort Worth Independent School District
- **Ms. Kara Waddell**; President and Chief Executive Officer, Child Care Associates

Our valued partnership helps provide retirement solutions *for America's workers*

The National Association of Counties (NACo) and Nationwide® are unified in our mission to help county leaders find better retirement solutions for their employees. Throughout our 35-year partnership, we've served more than 1.5 million county employees and retirees in the United States.

TOGETHER, WE REACH

over
350,000
PARTICIPANTS

more than
\$16 billion
IN ACCUMULATED ASSETS

over
3,000
PARTICIPATING COUNTIES
AND COUNTY JURISDICTIONS



For more information, contact:

CARLOS GREENE
DAVID BELNICK

404-263-3656
410-790-5440

CGREENE@NACO.ORG
DAVID.BELNICK@NATIONWIDE.COM



Nationwide, through its affiliated retirement plan service and product providers, has an endorsement relationship with the National Association of Counties (NACo). In addition, Nationwide may receive payments from mutual funds or their affiliates in connection to the variety of investment options offered to public sector retirement plans through variable annuity contracts, trust or custodial accounts. For more detail about Nationwide's endorsement relationships and/or payments Nationwide receives, please visit NRSforu.com.

Nationwide Retirement Solutions (Nationwide) partners with the National Association of Counties (NACo) to provide counties and their employees with a competitive deferred compensation program. As part of this partnership, Nationwide pays a fee to NACo in exchange for NACo's exclusive endorsement, marketing support and program oversight of Nationwide products made available under the program. For more information, including fees paid, Nationwide encourages you to visit NRSforu.com.

Nationwide, the Nationwide N & Eagle and Nationwide are service marks of Nationwide Mutual Insurance Company. © 2017 Nationwide NRM-15230AO-NX.1

9:15 A.M. – 10:00 A.M.

[Rio Grande Room]

Early Head Start: Getting children on the path to success begins with programs like Early Head Start, which provides intensive, comprehensive child development and family support services to low-income infants and toddlers and their families to prepare them for school and to break the generational cycle of poverty.

- **Dr. Jennifer Giddings Brooks** – Facilitator
- **Ms. Ronnita Carridine;** Principal, Morningside Elementary School, Fort Worth Independent School District
- **The Honorable Ramon Romero, Jr.,** Texas House Member, District 90
- **Mr. Frederick Slabach;** President, Texas Wesleyan University
- **Ms. Robyn Lilley Williams;** PK3 Educator, Teacher of the Year, Morningside Elementary School, Fort Worth Independent School District
- **Ms. Linda Winkelman;** Director, Child and Family Services and Early Head Start Director, Center for Transforming Lives

10:00 A.M. – 10:30 A.M.

[Trinity Ballroom Foyer]

NETWORKING BREAK

10:30 A.M. – 12:30 P.M.

[Rio Grande Room]

URBAN VS. RURAL POVERTY: THE EFFECTS OF GENERATIONAL POVERTY ON CHILDREN AND COMMUNITIES

With over 15 million children in the United States living below the poverty line, counties across the country are facing similar challenges in providing services to families in both urban and rural communities. Research shows that successful programs must focus on “two-generation” approaches, which address the cycle of poverty caused by disparities in access to employment, healthcare, education and housing.

- **Ms. Fraser Nelson;** Managing Director of Strategic Partnerships, Sorenson Impact Center - Facilitator
- **The Honorable Merceria Ludgood;** Commissioner, Mobile County, Ala.
- **The Honorable Sharon Green Middleton;** Councilwoman, Baltimore City Council, Md.
- **Dr. Caroline Ratcliffe;** Senior Fellow and Co-Director of the Opportunity and Ownership initiative, Urban Institute
- **The Honorable William Talbot;** Commissioner, Piute County, Utah
- **The Honorable Rock Ulibarri;** Commissioner, San Miguel County, N.M.

12:30 P.M. – 1:30 P.M.

[Trinity Ballroom Foyer]

LUNCH

1:30 P.M. – 3:30 P.M.

CONCURRENT WORKSHOPS

Workshop 1

[Elm Fork]

DOCUMENTARY SCREENING/DISCUSSION ON ADVERSE CHILDHOOD EXPERIENCES

“Resilience: The Biology of Stress & the Science of Hope” – Debuting at the Sundance Film Festival, this documentary explores the links between adverse childhood experiences (ACEs) and their impact on a child’s lifespan. Now understood to be one of the leading causes of illnesses, from heart disease and cancer, to substance abuse and depression, extremely stressful experiences in childhood can alter brain development and have lifelong effects on health and behavior. Children who suffer toxic stress caused by abuse, neglect or malnourishment are put at a greater risk for disease, homelessness, prison time and early death. Experts and practitioners profiled in *Resilience* are proving that what is predictable is preventable, and they are developing the programs and services needed to help the next generation break the cycle of adversity and disease. *Film runs 60 minutes.*

- **Mr. Larry Tubb;** Senior Vice President of Strategic Planning, Cook Children’s Medical Center

Workshop 2

[West Fork]

THE IMPACT OF THE OPIOID CRISIS ON CHILDREN AND FAMILIES

The epidemic of overdoses and deaths from the abuse of prescription painkillers and heroin has devastated countless families and communities across the country. Children have become the victims of this crisis, as their parents struggle to overcome addiction, or worse, succumb to it. County child welfare systems are overwhelmed with caseloads of neglected or orphaned children and are striving to provide safe and caring environments for children most in need.

- **Ms. Regina LaBelle;** LaBelle Strategies – Facilitator
- **Ms. Gail Gallagher;** Generations United, GrAND Voices Network Liaison
- **The Honorable Debbie Lieberman;** Commissioner, Montgomery County, Ohio
- **Ms. Rebecca Robuck;** Policy Director, ChildFocus

6:00 P.M. – 7:45 P.M.

*[Bass Performance Hall
4th & Calhoun Streets
walking distance from hotel]*

JOINT SUMMIT/BOARD RECEPTION

From 7:00 – 7:45 p.m., guests have been invited to observe the final dress rehearsal of the first act of the Nutcracker, performed by the Texas Ballet Theater. As this is the only rehearsal in Fort Worth, this is, indeed, a performance and should be treated as such.

FRIDAY, DECEMBER 8

8:00 A.M. – 11:30 A.M.

[Trinity Ballroom Foyer]

REGISTRATION OPEN

8:00 A.M. – 8:30 A.M.

[Trinity Ballroom Foyer]

NETWORKING BREAKFAST

8:30 A.M. – 11:30 A.M.

CONCURRENT MOBILE WORKSHOPS

[Meet in Trinity Ballroom foyer and board the buses in the porte cochere immediately outside the foyer doors]

[Tarrant Area Food Bank]

ACCESS TO NUTRITION TARRANT AREA FOOD BANK

Mobile tour and volunteer opportunity: **Tarrant Area Food Bank**

Tarrant Area Food Bank has been an innovator in sourcing food, developing vital partnerships with members of the food industry, and providing food and resources through a network of 270 partner agencies serving the hungry in North Texas. Attendees will tour the facility and prepare nutritious food boxes for children.

- **Mr. Curtis Amos**; Superintendent, Everman Independent School District
- **Mr. Charles Boswell**; Senior Director, Policy and Programs, Tarrant Area Food Bank
- **The Honorable Ray Richardson**; Mayor, City of Everman, Texas
- **Mr. Bo Soderbergh**; Executive Director, Tarrant Area Food Bank

[One Safe Place]

FAMILY SUPPORT ONE SAFE PLACE

One Safe Place is a comprehensive crime prevention agency devoted to stopping crime and violence in Tarrant County's neighborhoods, schools and homes. The core concept is to provide ONE PLACE where victims can go to talk to an advocate, create a safety plan, speak with law enforcement, seek legal assistance and access other social services.

- **Ms. Michelle Morgan**; Vice President, One Safe Place
- **Mr. Ken Shetter**; President, One Safe Place

12:00 P.M. – 2:00 P.M. LUNCH

[Trinity Ballroom]

J.B. AND M.K. PRITZKER FAMILY FOUNDATION

- **Ms. Rachel Schumacher**; Director, Pritzker Children's Initiative
Ms. Schumacher will discuss the Pritzker Children's Initiative and recent award to NACo for local investment and technical assistance in early childhood development.

12:30 P.M. – 4:00 P.M. REGISTRATION OPEN

[Trinity Ballroom Foyer]

2:30 P.M. – 5:00 P.M. BOARD OF DIRECTORS MEETING

[Rio Grande Room]

6:30 P.M. – 8:30 P.M. BOARD RECEPTION AND DINNER

*[Grace Restaurant
777 Main St.*

walking distance from hotel]

SATURDAY, DECEMBER 9

8:00 A.M. – 12:00 P.M. REGISTRATION OPEN

[Trinity Ballroom Foyer]

8:00 A.M. – 9:00 A.M. NETWORKING BREAKFAST

[Trinity Ballroom Foyer]

9:00 A.M. – 1:00 P.M. BOARD OF DIRECTORS MEETING AND WORKING LUNCH

[Rio Grande Room]

speaker bios

CURTIS AMOS; SUPERINTENDENT, EVERMAN INDEPENDENT SCHOOL DISTRICT



Curtis Amos became Superintendent of the Everman Independent School District (ISD) in 2014. Mr. Amos has served in elementary, middle and high school administrative roles and began his career as an elementary special education teacher. He was appointed superintendent of Everman ISD by unanimous vote of the board of trustees, which made him the first African-American to hold this position. Mr. Amos received his undergraduate degree from

Southeastern Oklahoma State University, where he was a member of the men's basketball team, his master's degree from Texas Woman's University, and is currently a doctoral candidate at Tarleton State University.

CHARLES BOSWELL; SENIOR DIRECTOR, POLICY AND PROGRAMS, TARRANT AREA FOOD BANK



Following service as board president of Tarrant Area Food Bank, Charles Boswell joined the staff of the Food Bank in 2015. As Senior Director of Policy and Programs he advocates on hunger related issues with federal, state and local government officials. He also directs the following programs: the Community Kitchen, Food for Kids, Nutrition Education and SNAP outreach. Previously, he was District Director for Senator Wendy Davis from 2009 through

2014. Mr. Boswell spent 30 years working for the City of Fort Worth, rising up the ranks from Budget Analyst to Budget Director, Assistant City Manager and, finally, City Manager. He earned his B.A. and M.A. in Public Administration from Texas Christian University.

DR. JENNIFER GIDDINGS BROOKS



Dr. Jennifer Giddings Brooks has a distinguished record in both educational administration and community service. An educator by avocation and training, her experience runs the gamut from Founder and CEO of Brooks Educational Consultants, to inaugural Director of the Center for Urban Education (Texas Christian University); and the Degree Completion Program (Paul Quinn College); to principal of two high performing inner-city schools in the Fort Worth Independent

School District. She was also the district's first Elementary Magnet School Coordinator and worked as a Research Evaluator, publishing several research abstracts. Dr. Brooks attended Chapman College, where she was a participant in its World Campus Afloat/Semester-at-Sea Program sponsored by the Institute for Shipboard Education, University of London, and Texas Christian University. She holds the Doctor of Education degree from Texas Woman's University.

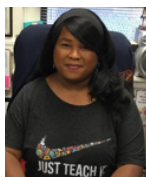
THE HONORABLE ROY CHARLES BROOKS; COMMISSIONER, TARRANT COUNTY, TEXAS



Tarrant County, Texas Commissioner Roy Charles Brooks was elected NACo president on July 24, 2017. Active in NACo since 1991, Brooks has served on NACo's Board of Directors, chaired NACo's Health Steering Committee Subcommittee on Health Reform and chaired NACo's Healthy Counties Initiative Advisory Board. He is also the chairman of the National Organization of Black County Officials. For more than 30 years, Mr. Brooks has

represented his community as a volunteer, a city official and a county commissioner. Mr. Brooks was elected to serve as a Tarrant County commissioner in 2004 and has dedicated himself to addressing human services issues since taking office. He has served in numerous local, state and federal leadership positions and is passionate about improving residents' health and welfare.

RONNITA CARRIDINE; PRINCIPAL, MORNINGSIDE ELEMENTARY SCHOOL, FORT WORTH INDEPENDENT SCHOOL DISTRICT



A native of Michigan, Ms. Carridine has taught in and led schools across the United States. Her leadership stems from her love of children and her philosophy that teaching and learning are grounded in efficacious practice, equity, integrity and loyalty to children. She is honored to serve the students and families of the Morningside community, who are historically grounded in the city of Fort Worth. Ms. Carridine believes it is our duty to build lasting

relationships, and to equip and armor our students with strategies for future success in a global world.

GAIL GALLAGHER; GENERATIONS UNITED, GRAND VOICES NETWORK LIAISON



Gail Gallagher has worked with grandparents raising grandchildren for over 10 years. She and her husband have been through the experience of having to gain custody and secure adoption of their two grandchildren. At the request of a publisher, she authored the book, *Grandparents Winning Custody of Grandchildren*. She has been the Southwest Regional Director of the National Kinship Alliance for Children, formerly the National Committee of

Grandparents for Children's Rights. Ms. Gallagher is a member of Generations United in Washington, D.C., and was the former Texas Regional Director for International Fellowship. Ms. Gallagher attended Abilene Christian University and Southwestern Baptist Theological Seminary.

REGINA LABELLE; LABELLE STRATEGIES, FACILITATOR



Regina LaBelle is a principal with LaBelle Strategies where she advises governments and non-profits on effective strategies to address the opioid epidemic. A Visiting Fellow with the Duke-Margolis Center for Health Policy, Ms. LaBelle is a frequent commentator on the opioid issue, with appearances on MSNBC and in national publications. She served for eight years in the Obama Administration, as senior policy advisor and Chief of Staff in the White House Office of National Drug Control Policy (ONDCP). At ONDCP, she co-authored and helped to implement the Administration's plan to address the opioid epidemic. Ms. LaBelle also served as legal counsel to the Mayor of Seattle and as a consultant on state legislative policies for King County, Washington. She is a graduate of Georgetown University Law Center and Boston College.

THE HONORABLE DEBBIE LIEBERMAN; COMMISSIONER, MONTGOMERY COUNTY, OHIO



Montgomery County, Ohio Commissioner Debbie Lieberman moved to Dayton to attend the University of Dayton. She served as Montgomery County Chief Deputy Auditor and was elected twice to the city of Clayton Council before becoming a Montgomery County Commissioner in 2004. Ms. Lieberman has been a champion for many causes; she is currently focused on workforce and economic development, eliminating poverty, reducing infant mortality, ex-offender reentry and is one of the leading champions for improving Early Childhood learning outcomes. Ms. Lieberman has been recognized by the YWCA as a "Woman of Influence" and by the *Dayton Daily News* as one of their "Ten Top Women." *The Dayton Business Journal* in 2014 awarded Ms. Lieberman with their "Regional Leader of the Year" award.

ROBYN LILLEY WILLIAMS; PK3 EDUCATOR, TEACHER OF THE YEAR, MORNINGSID E ELEMENTARY SCHOOL, FORT WORTH INDEPENDENT SCHOOL DISTRICT



Robyn Lilley Williams began her teaching career with Los Angeles Unified School District in 1995 where she worked as an Early Childhood educator at Charles Barrett Elementary School. She was selected for the district-implemented Ten Schools Program, based on the school's classification as one of the ten lowest performing elementary schools in the entire district. After moving to Fort Worth in December 2007, Ms. Lilley began teaching at Morningside Elementary. From PEAK to School Turn Around to RISE, she has honed her craft as a Pre-K through second grade teacher. Currently, she teaches PreK-3 and feels that it is her most significant work to date.

THE HONORABLE MERCERIA LUDGOOD; COMMISSIONER, MOBILE COUNTY, ALA.



Mobile County, Alabama Commissioner Merceria Ludgood is President of her commission. She has served residents of Commission District One since 2007. Prior to her election, Ms. Ludgood was a member of the county's legal team for 14 years. She was elected President of the Association of County Commissions of Alabama in August 2014, serves as a member of the NACo Board of Directors and is past Southern Region

Representative to the Board's Executive Committee. Ms. Ludgood is a member of NACo's Community and Economic Workforce Development Steering Committee and the International Economic Development Task Force. She is also actively involved with the Gulf States Counties and Parishes Caucus, which formed to address issues arising from the response to the Deep Water Horizon event, and served as its first Chairperson.

THE HONORABLE SHARON GREEN MIDDLETON; COUNCILWOMAN, BALTIMORE CITY COUNCIL, MD.



Sharon Green Middleton represents one of Baltimore City's largest districts and is now serving in her third term. As Vice President of the Council, Ms. Middleton also serves as the Chair of the Taxation and Finance Committee; Vice Chair of Land Use and Transportation, and as a member of the Commission on Aging and Retirement board. She is on the boards of both the Maryland Association of Counties (MACo) and the National Association of Counties (NACo). She serves as a member of NACo's Transportation Steering Committee and Vice Chair of its Ports Sub-Committee. Additionally, she is also a member of the National Association of Black County Officials (NABCO).

Councilwoman Middleton is a proud native of Baltimore, Maryland and a graduate of Morgan State University.

MICHELLE MORGAN; VICE PRESIDENT, ONE SAFE PLACE



Michelle Morgan is the Vice President and Director of Family Justice Center for One Safe Place in Fort Worth, Texas. Prior to being hired as the Director, she led the planning and development effort of One Safe Place under the leadership of the Fort Worth Police Department and Safe City Commission. Ms. Morgan previously worked 12 years for the Fort Worth Police Department Victim Assistance Section, which included eight years as the Victim

Assistance Director, supervising advocates, coordinating assistance to crime victims, protecting rights of crime victims, developing new advocacy programs and liaising with law enforcement. She has a B.A. in Social Science with Criminal Justice and an M.A in Management with Public Administration from Texas Wesleyan University.

FRASER NELSON; MANAGING DIRECTOR OF STRATEGIC PARTNERSHIPS, SORENSON IMPACT CENTER



Fraser Nelson is Director of Strategic Partnerships at Sorenson Impact, where she facilitates social impact and innovation projects throughout the United States. Prior to joining Sorenson, she served as the first Director of Data and Innovation for the Salt Lake County Mayor's Office, where she led the successful launch of two Pay for Success initiatives. Ms. Nelson founded and was the CEO of the Community Foundation of Utah, growing the Foundation from an idea to a national leader in innovative philanthropy. She also worked as the CEO of the State of Utah's Disability Law Center for over a decade. Ms. Nelson holds a B.A. from Duke University and an M.A. from St. Mary's University.

MATTIE PARKER; CHIEF OF STAFF, CITY OF FORT WORTH MAYOR BETSY PRICE



Mattie Parker currently serves as the chief of staff for the mayor and Fort Worth City Council, overseeing all policy and communications on behalf of Mayor Betsy Price. Prior to joining the Mayor and council's staff, she served for over a decade in national and state public affairs. Ms. Parker graduated from the University of Texas at Austin with a B.A. in government and with a law degree from Texas Wesleyan School of Law (now Texas A&M University School of Law). After adopting their daughter at age 10, Ms. Parker and her husband have focused their philanthropic efforts on children in the foster care system, promoting adoption and providing all children a forever home.

DR. CAROLINE RATCLIFFE; SENIOR FELLOW AND CO-DIRECTOR OF THE OPPORTUNITY AND OWNERSHIP INITIATIVE, URBAN INSTITUTE



Caroline Ratcliffe is a senior fellow and co-director of the Opportunity and Ownership initiative at the Urban Institute. An expert on asset building and poverty, she has published and spoken extensively on poverty, emergency savings, alternative financial-sector products, and welfare programs and policies. Dr. Ratcliffe has evaluated programs aimed at moving low-income families into the financial mainstream and studied how welfare programs and policies affect families' economic well-being. Her research also examines persistent childhood poverty and how it relates to adult success. Before joining Urban, Dr. Ratcliffe held positions at the Congressional Budget Office and Brookings Institution. She was also a visiting associate professor at Georgetown University. She holds a Ph.D. in economics from Cornell University.

THE HONORABLE RAY RICHARDSON; MAYOR, CITY OF EVERMAN, TEXAS



Ray Richardson is Mayor of the City of Everman, which is located in Southeast Tarrant County. Mayor Richardson was first elected to Everman City Council Place 6, in May 2002. In May 2013, he was elected as Mayor of the City of Everman. He is currently serving his third term as mayor. Mr. Richardson is a graduate of Everman High School and has been volunteering in Everman for the past 37 years, serving on the Everman Volunteer Ambulance service,

Everman Parks Board, Everman Economic Development Corporation, Everman Crime Control Committee and the Everman Baseball Association. Mr. Richardson is a retired firefighter with the City of Arlington, having dedicated 32 years of service to its citizens.

REBECCA ROBUCK; POLICY DIRECTOR, CHILDFOCUS



Rebecca Robuck is the Policy Director at ChildFocus, a national child welfare consulting firm. She works with nonprofits, foundations and public agencies to improve policies and practices that impact vulnerable children and families. Previously, Ms. Robuck was a Legislative Assistant to Representative Jim Cooper (TN-05) and handled a range of policy issues, including child welfare. She also served as an aide to the Medical Director at the

Philadelphia Department of Human Services. Ms. Robuck holds Masters degrees in Public Administration (M.P.A.) and Social Work (M.S.W.) from the University of Pennsylvania and a B.A. from Davidson College.

THE HONORABLE RAMON ROMERO, JR., TEXAS HOUSE MEMBER, DISTRICT 90



In 2014, Ramon Romero, Jr. won the Democratic Primary for House District 90 in Fort Worth against an 18-year incumbent, becoming the first Hispanic State Representative in Tarrant County history. During his first term as State Representative, Romero was awarded 'Democrat Freshman of the Year' by his peers after a highly successful legislative session. He began his political career as a neighborhood representative working with the Fort Worth City

Council, and was later appointed to the Fort Worth Zoning Commission and later became chair of the Fort Worth Planning Commission. Representative Romero is a lifelong resident of Fort Worth, Texas. He is a well-respected father, businessman, and community leader who believes that success is measured not by how much you have received, but by how much you have given.

RACHEL SCHUMACHER; DIRECTOR, PRITZKER CHILDREN'S INITIATIVE



Rachel Schumacher is the Director of the Pritzker Children's Initiative at the J.B. and M.K. Pritzker Family Foundation, where she supports the goal to provide all at-risk babies and toddlers in the United States with greater access to high quality early childhood development resources. Prior to joining the Foundation, Ms. Schumacher served as the Director of the Office of Child Care in the U.S. Department of Health and Human Services during the Obama Administration. She was a Senior Fellow in Child Care and Early Education at the Center for Law and Social Policy (CLASP), a leading national policy research and advocacy organization dedicated to improving the lives of low-income people. Ms. Schumacher has a B.A. from Brown University and earned an M.P.P. from the Irving B. Harris School of Public Policy at the University of Chicago.

DR. KENT PAREDES SCRIBNER; SUPERINTENDENT, FORT WORTH INDEPENDENT SCHOOL DISTRICT



Dr. Kent Paredes Scribner has been superintendent of the Fort Worth Independent School District since 2015, where he serves more than 87,000 students and 11,000 employees. He began his career in education as a high school Spanish teacher and guidance counselor in Philadelphia. Dr. Scribner became a principal and district administrator prior to serving as a superintendent in Phoenix for 13 years. He earned his B.A. in Latin American Studies from Carleton College in Minnesota, his M.Ed. in Counseling Psychology from Temple University in Pennsylvania and his Ph.D. in Educational Leadership and Policy Studies from Arizona State University.

KEN SHETTER; PRESIDENT, ONE SAFE PLACE



Ken Shetter is the President of One Safe Place, a crime and violence prevention collaborative serving all of Tarrant County. The Center, recognized as one of the most effective and comprehensive programs of its kind, serves thousands of victims of domestic violence and their children each year. In addition to his One Safe Place duties, Mr. Shetter is the Mayor of Burleson, Texas, where he has focused on youth, education and families. Mr. Shetter earned a B.S. in Education from Baylor University, an M.A. in Applied Sociology from The American University in Washington, D.C. and a Juris Doctor from Baylor Law School.

FREDERICK SLABACH; PRESIDENT, TEXAS WESLEYAN UNIVERSITY



Since assuming the role in 2011, Texas Wesleyan University President Frederick G. Slabach has developed and executed a bold agenda that cultivates student critical thinking and revitalizes Texas Wesleyan's home in East Fort Worth as a vibrant academic and economic center. Previously, Mr. Slabach was CEO of the Harry S. Truman Scholarship Foundation in Washington D.C. He was also dean of the Texas Wesleyan University School of Law from 2003 to

2006. Mr. Slabach has served in senior-level positions at the state and national level of government, including Assistant Secretary of Agriculture for Congressional Relations and Counsel to the Secretary, U.S. Department of Agriculture; Legislative Counsel to the President Pro Tem of the U.S. Senate; and a senior assistant to the Governor of Mississippi. President Slabach has an LL.M from Columbia University School of Law, a J.D. from the University of Mississippi School of Law and a B.S. from Mississippi College.

BO SODERBERGH; EXECUTIVE DIRECTOR, TARRANT AREA FOOD BANK



Born in Stockholm, Sweden in 1950, Mr. Soderbergh came to Fort Worth, Texas in 1969 to attend Texas Christian University where he received a B.A. and M.A. Since 1997, he has served as Executive Director of Tarrant Area Food Bank, a regional organization serving 13 counties in North Texas. Mr. Soderbergh is Past President of the Rotary Club of Fort Worth and is involved in various committees at Texas Christian University.

THE HONORABLE WILLIAM TALBOT; COMMISSIONER, PIUTE COUNTY, UTAH



Will Talbot is a lifetime resident of Piute County. He was raised working on the family farm and spent his childhood chasing livestock and changing sprinklers in the fields. Mr. Talbot has also worked for the county road department. In 2015, he became a county commissioner, working on issues related to public lands, predator control, economic development, public health and intergenerational poverty.

LARRY TUBB; SENIOR VICE PRESIDENT OF STRATEGIC PLANNING, COOK CHILDREN'S MEDICAL CENTER



Larry Tubb is the senior vice president for the Center for Children's Health and the senior vice president of strategic planning for Cook Children's Health Care System. With more than 30 years of service to Cook Children's, he was the founding president of Cook Children's Home Health. Mr. Tubb also co-founded the Cook Children's Grants and Research department, is a past chair of Cook Children's Institutional Review Board and is often actively

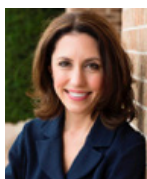
leading system-wide initiatives. He is involved in several community organizations working to improve the health of children.

THE HONORABLE ROCK ULIBARRI; COMMISSIONER, SAN MIGUEL COUNTY, N.M.



Rock Ulibarri serves as Commissioner for District One and is currently the Chairman of the San Miguel Board of Commissioners. He spent many years as a middle school teacher and continues to use his expertise to teach youth leadership at the community college for at-risk youth. Mr. Ulibarri has also taught workshops in grassroots organizing and nonviolent resistance at United World College USA and guided students into the backcountry to teach 'Leave No Trace' wilderness practices. The Ulibarris were one of the original 36 families that settled Las Vegas, New Mexico and Mr. Ulibarri is the seventh generation on his family's ranch in the Sangre de Cristo Mountains.

KARA WADDELL; PRESIDENT AND CHIEF EXECUTIVE OFFICER, CHILD CARE ASSOCIATES



Kara Waddell is the President and CEO of Child Care Associates (CCA) reinforcing the leadership of CCA in the 0-5 space as a champion of early education in North Texas. Ms. Waddell also serves as the Chair of the Early Learning Alliance in Tarrant County and the School Readiness Action Network with Read Fort Worth, convening over 50 organizations and agencies towards building a strong early childhood system. She previously served as the State of Oregon's Child Care Administrator overseeing the \$120 million Child Care Development Fund and helping lead early childhood systems and reform efforts in forming a new Early Learning Division. Prior to Oregon, Ms. Waddell lived in China for 12 years, leading a countrywide nonprofit with programs in poverty alleviation, child wellbeing and community development. She has a B.A. from Duke University and her M.P.A. from Harvard University's John F. Kennedy School of Government and she is proficient in Mandarin Chinese.

LINDA WINKELMAN; DIRECTOR, CHILD AND FAMILY SERVICES AND EARLY HEAD START DIRECTOR, CENTER FOR TRANSFORMING LIVES



Linda Winkelman knows firsthand the difference a high quality early childhood education program can make for children and their families living in poverty. Her commitment to the dual-generation approach to addressing poverty brought her to the Center for Transforming Lives in 2010, where she brought over 30 years of experience working in the early care and education field. Ms. Winkelman has experience as a classroom teacher, college instructor and program administrator. As Director of Child and Family Services, she seeks to help children bridge the gap that comes from living in poverty, homelessness and trauma. Ms. Winkelman holds an M.A. in Early Childhood Education from the University of Colorado, Denver, and a B.A. in Sociology from Texas Tech University.

sponsors



Nationwide[®]
is on your side



LINEBARGER
ATTORNEYS AT LAW

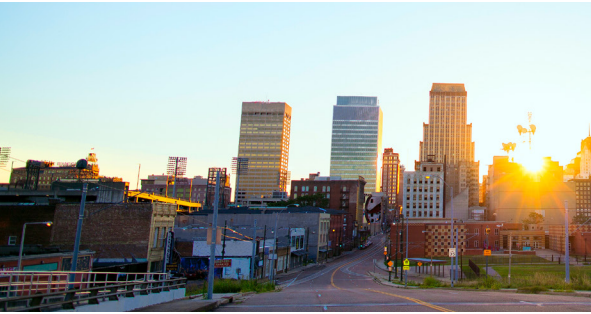
EDWARD P. BASS



SID W. RICHARDSON

FOUNDATION

UPCOMING EVENTS



2018 HEALTH AND JUSTICE FORUM

January 17-19, 2018
Shelby County, Tenn.



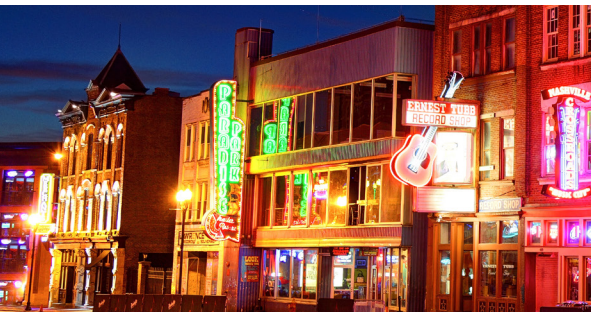
NACo LEGISLATIVE CONFERENCE

March 3-7, 2018
Washington Hilton Hotel
Washington, D.C.



WESTERN INTERSTATE REGION CONFERENCE

May 23-25, 2018
Blaine County/Sun Valley, Idaho



NACo ANNUAL CONFERENCE AND EXPOSITION

July 13-16, 2018
Gaylord Opryland
Nashville/Davidson County, Tenn.



660 North Capitol St. NW
Washington, D.C. 20001
202.393.6226
www.naco.org

fb.com/NACoDC
[@NACoTweets](https://twitter.com/NACoTweets)
youtube.com/NACoVideo
NACo.org/LinkedIn

STRONGER COUNTIES.
STRONGER AMERICA.

