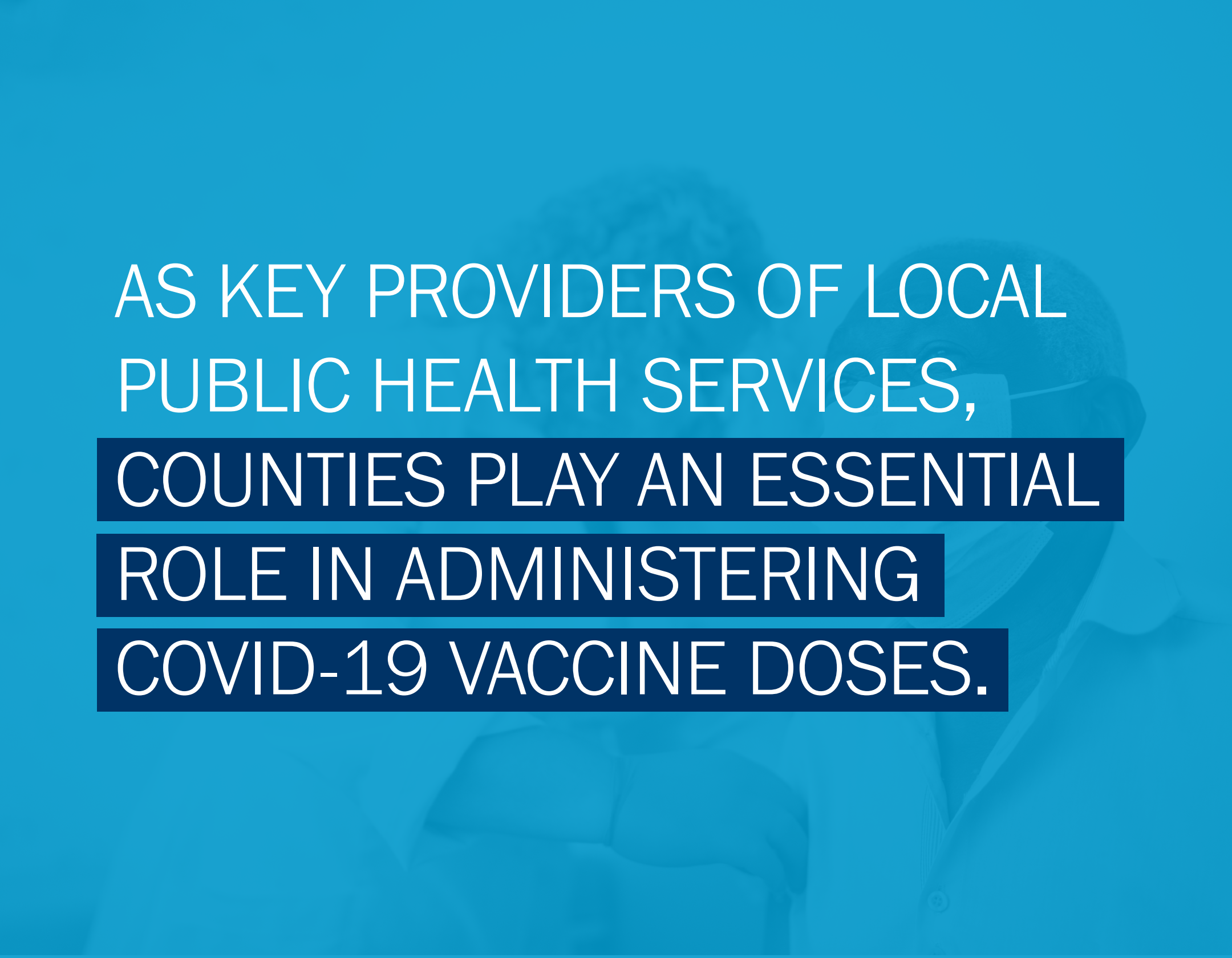




THE COUNTY ROLE IN VACCINES

COUNTY EXPLORER | JULY 2021



AS KEY PROVIDERS OF LOCAL
PUBLIC HEALTH SERVICES,
COUNTIES PLAY AN ESSENTIAL
ROLE IN ADMINISTERING
COVID-19 VACCINE DOSES.

KEY TAKEAWAYS

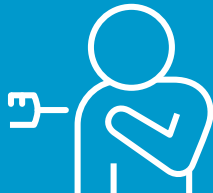
Over the past several months, counties have:



Leveraged local public health expertise to allocate the vaccine supply. As of June 29, more than **381 million COVID-19 vaccine doses** had been delivered in the United States.



Worked with state and federal partners to overcome access barriers. Each year, counties invest more than **\$163 billion** in community health, hospitals and human services.



Supported vaccination administration through county operated vaccine clinics. As of June 29, more than **325 million COVID-19 vaccine doses** had been administered in the United States.



Increased vaccine confidence through public messaging and education. Counties are involved in protecting public health through over **two-thirds of local health departments.**

Percent of 18+ Population Fully Vaccinated by State of Residence, as of June 29, 2021



Kanawha County leaders' collaborative health delivery model, close relationships with the community and flexibility in delivery led the county to the highest vaccination rate in the state (54 percent of those 12 and older), in spite of challenges with funding, health and numerous socioeconomic factors that typically lead to low vaccination rates.



The County Role in Vaccines | July 2021

“

WE OPERATED MASS VACCINATION SITES AND MOBILE CLINICS TO MEET THE NEEDS OF OUR RESIDENTS ACROSS THE COUNTY. WE FORGED STRATEGIC PARTNERSHIPS TO BOOST VACCINE ACCESS AND PROVIDED CRITICAL INFORMATION TO RESIDENTS IN TARGETED ZIP CODES, THROUGH NEIGHBORHOOD CANVASSING, CALLS AND TEXTS. NOW, NEARLY A HALF A MILLION COUNTY RESIDENTS ARE PROTECTED AGAINST COVID-19.”

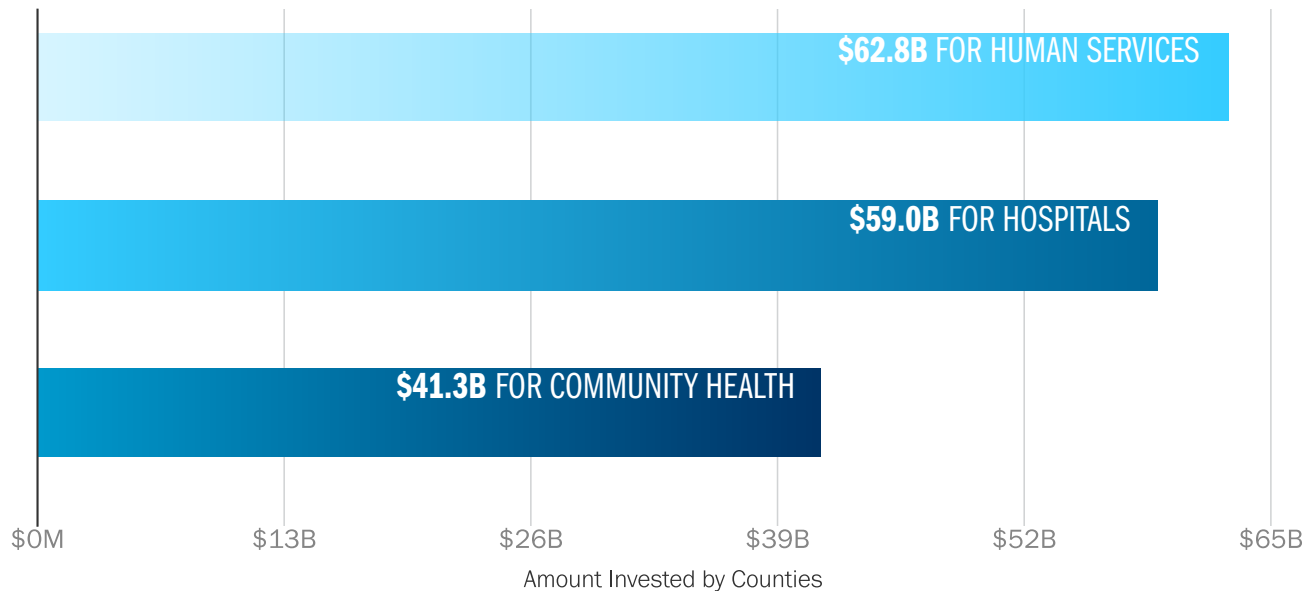
Angela D. Alsobrooks, County Executive, Prince George's County, MD.



COUNTIES INVEST MORE THAN \$163 BILLION IN COMMUNITY HEALTH, HOSPITALS AND HUMAN SERVICES ANNUALLY AND RUN LOCAL PUBLIC HEALTH DEPARTMENTS ACROSS THE NATION

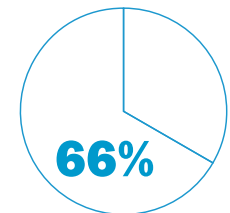
County Spending (in Billions of Dollars), by Category, 2017

Each year, counties invest **\$62.8 billion** to serve as a safety net for millions of residents and to deliver vital services to our nation's most vulnerable populations.



Counties play a direct role in the health and well-being of residents, by running local health departments, providing health care for low-income and uninsured residents and developing community health care programs.

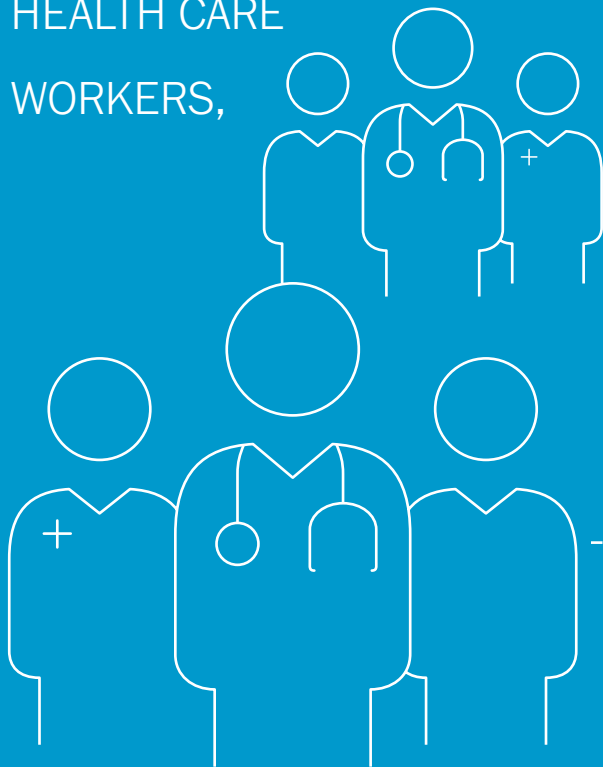
Counties directly administer or support public health systems through involvement with **over two-thirds** of local health departments.



COUNTIES EMPLOY OVER

391,000

HOSPITAL AND
HEALTH CARE
WORKERS,



SUPPORT OVER

900

HOSPITALS THAT
PROVIDE INPATIENT
MEDICAL CARE AND
SPECIALIZED CARE.



COUNTIES ALSO

OWN AND SUPPORT

700

LONG-TERM

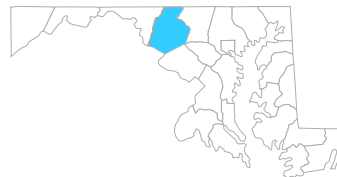
CARE FACILITIES.

COUNTIES ARE LEVERAGING PARTNERSHIPS AND ADMINISTERING SHOTS ARMS TO KEEP RESIDENTS HEALTHY AND SAFE



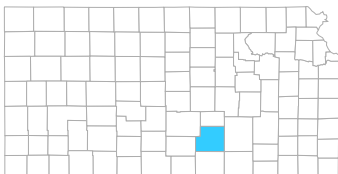
TULARE COUNTY, CALIF.

In a push for equitable vaccine distribution, the Tulare County Health Department partnered with Adventist Health and United Farm Workers to deliver doses to rural agriculture workers, along with meals for those who came for the shot.



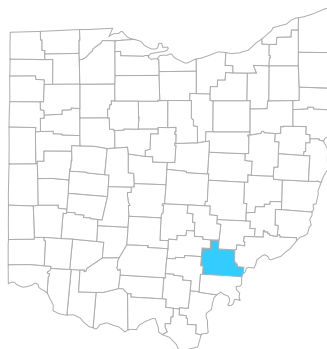
FREDERICK COUNTY, MD.

To reach the homeless population, Frederick County offers vaccinations to residents coming for meals to county soup kitchens, through street outreach and at the Alan P. Linton Jr. Emergency Shelter.



SEDGWICK COUNTY, KAN.

The Sedgwick County Health Department, The Wichita Black Nurses Association and local churches partnered together to deliver vaccines to minority residents within the city of Wichita using a mobile vaccine team and churches as clinics.



ATHENS COUNTY, OHIO

Partnering with Ohio University, the Athens City-County Health Department has enlisted the help of medical and nursing students to aide in the delivery of vaccinations.

COUNTIES LEAD COMMUNITIES AND RESIDENTS IN VACCINATION EFFORTS



HAMILTON COUNTY, N.Y.

By involving members of the community in its vaccine rollout, Hamilton County has been successful in reaching its largely rural population. Businesses, schools and law enforcement worked together to share information about the vaccine and combat any hesitancy. These community partnerships have allowed county officials to meet the unique needs of their residents and offer a highly-tailored vaccine distribution.



TRAVIS COUNTY, TEXAS

Travis County's successful vaccination program is the result of a strong partnership with Austin Public Health (APH) and various community and non-profit organizations. As needs have changed, APH and Travis County have shifted away from mass vaccination clinics to more community-based pop-up sites such as grocery stores, churches, neighborhood centers and apartment complexes.



DATA SOURCES

NACo Analysis of U.S. Census Bureau - Census of Individual Governments: Finance, 2017; The U.S. Centers for Disease Control and Prevention - CDC COVID Data Tracker and The National Association of County and City Health Officials (NACCHO) - National Profile of Local Health Departments (Profile) Study, 2019.

NACo's MISSION

Strengthen America's counties.



NACo's VISION

Healthy, safe and vibrant counties across America.

ABOUT NACo

The National Association of Counties (NACo) strengthens America's counties, serving nearly 40,000 county elected officials and 3.6 million county employees. Founded in 1935, NACo unites county officials to:

- **Advocate county priorities** in federal policymaking
- **Promote exemplary county policies** and practices
- **Nurture leadership skills** and expand knowledge networks
- **Optimize county and taxpayer resources** and cost savings, and
- **Enrich the public's understanding** of county government.

 FB.COM/NACoDC
 TWITTER.COM/NACoTWEETS
 YOUTUBE.COM/NACoVIDEO
 WWW.NACo.ORG/LINKEDIN

660 NORTH CAPITOL STREET, NW
SUITE 400 • WASHINGTON, D.C. 20001
202.393.6226 • WWW.NACo.ORG

