

Federal Emergency Management Agency



Robert Samaan
FEMA Region 4
National Preparedness Director

Maxine Fredericks
FEMA Region 4
Grants Program Analyst



FEMA

FEMA Mission

“FEMA’s mission is to **support** our citizens and first responders to ensure that as a nation we **work together** to build, sustain, and improve our capability to prepare for, protect against, respond to, recover from, and mitigate all hazards.”

FEMA Regions



Region 4 Overview

8 southeastern states

6 federally-recognized tribes

Home to:

- Seven deep water ports
- Seven air transportation hubs
- A major international financial hub
- Two chemical munitions depots
- The oil and gas pipeline hub for the East Coast
- 17 nuclear power plants with applications for five more
- Two active Department of Energy laboratories
- The nation's gold reserve
- 26,332,165 housing units
- 4,401,506 businesses
- 20 percent of the nation's population



FEMA

FEMA Strategic Priorities

- Be survivor centric in mission and program delivery
- Become an expeditionary organization
- Posture and build capacity for catastrophic disasters
- Enable disaster risk reduction nationally
- Achieve business and management excellence



PPD-8 National Preparedness



- National Preparedness Goal
- National Preparedness System
- National Preparedness Frameworks

Resiliency Resources

THIRA

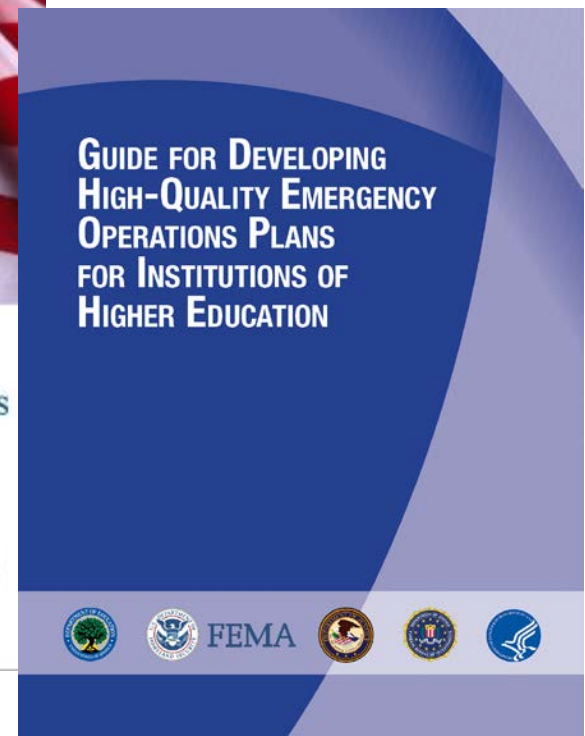
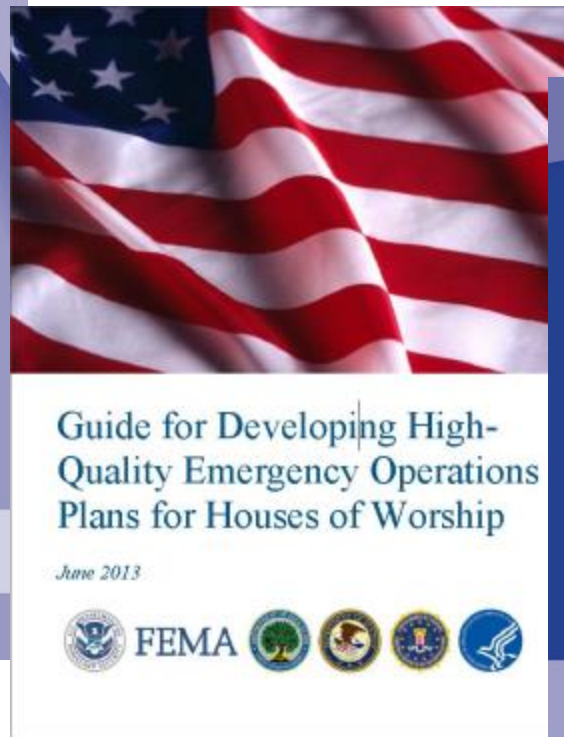
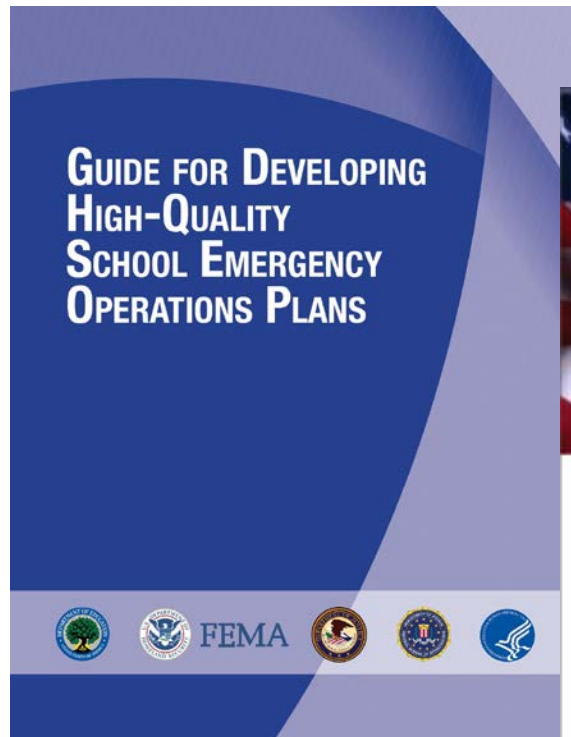
Threat and Hazard Identification and Risk Assessment

- THIRA is a four-step, common risk assessment process that helps communities to:
 - Identify a need to sustain existing capabilities
 - Identify shortfalls and capability gaps
 - Identify opportunities to build and sustain capabilities
 - Guide capability investment decisions



Resiliency Resources

- Comprehensive preparedness guides – <http://www.fema.gov/plan>



Continuity of Operations

At 5:10 pm on April 27, 2011, a mile wide EF-4 tornado struck Tuscaloosa, Alabama.

➤ In the next five minutes Tuscaloosa County lost:

- The Emergency Operations Center
- Access to the EMA Server
- Red Cross facility
- Salvation Army facility
- Armed Forces Reserve Center
- Tuscaloosa Police
- Primary Transmission Tower



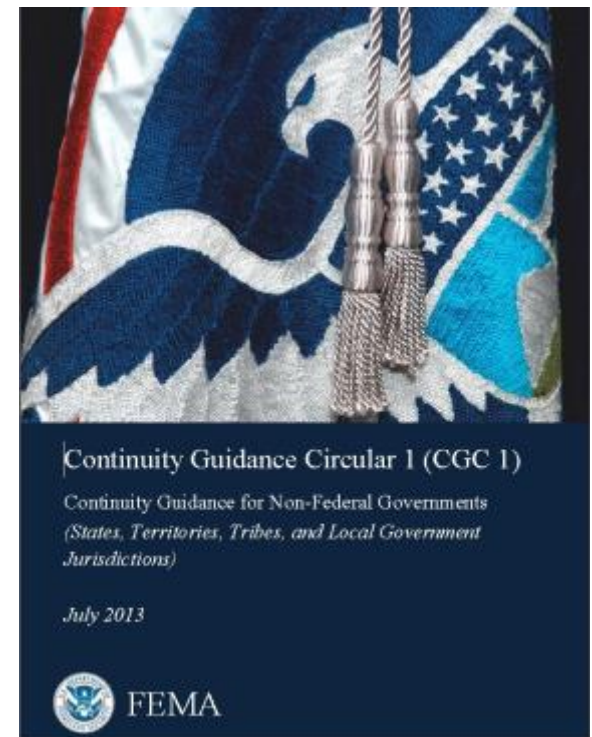
Having an effective Continuity of Operations Program enabled Tuscaloosa County to immediately move their disaster response operations to the University of Alabama EOC without any delay or confusion.

Resiliency Resources

- Continuity Planning

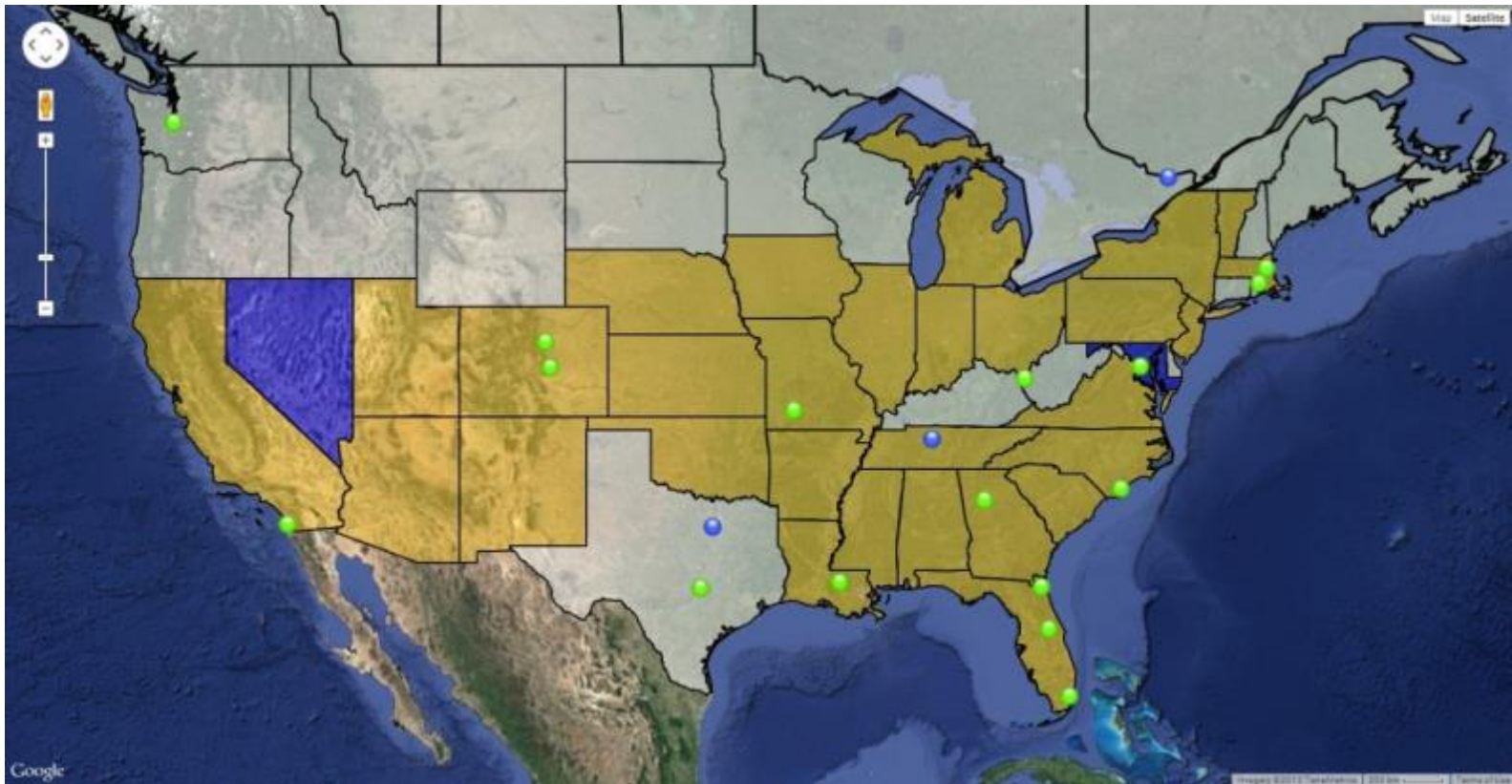
-- <http://www.fema.gov/continuity-operations>

- Organizational / local government benefits of continuity planning:
 - Able to perform essential functions under all conditions
 - Execute successful order of succession with delegation of authority
 - Minimize disruption of operations
 - Protect personnel, essential facilities, equipment and records
 - Achieve timely/orderly recovery and reconstitution



Resiliency Resources

- EMAP Standard and Accreditation – <http://emaponline.org/>



Currently, 46 programs are accredited.

Resiliency Resources

- Naval Postgraduate School Mobile Education Teams
-- <http://www.chds.us/?met>

Seminars Held Nationwide

To date, over 276 Executive Education Seminars (MET) have been held across the country. For details, use the tools on the left side of the map to zoom in, zoom out, or pan the view, then click on a location.



America's PrepareAthon!

- A nationwide, community-based campaign for action to increase emergency preparedness and resilience
- Enable individuals, organizations and communities to take action for relevant local hazards through drills, group discussion and community exercises
- *County officials play a key role in community involvement*





Emergency Management Performance Grants (EMPG)

Promoting Community Resiliency
through
Federal-State-Local Synchronization



Regionalized Preparedness Grant Program

- Budget for 2013-2014 based on discretionary formula of risk, population, prior state participation
- Funding mechanisms
 - Authorized through the Stafford Act
 - 50 states receive 75%, 4 territories receive 25%
 - Support EM planning, exercising, training and administrative support
 - Assist State/Tribal/Territorial/Local Governments build capabilities to promote community resilience



EMPG - Life Cycle and Requirements

- States are the eligible applicants
 - Each has unique application process/criteria for counties
- Performance period is 24 months
- Environmental Planning and Historical Preservation Review and Approval
- State Preparedness Report – PKEMRA Act 2006, Section 652
- Quarterly Program and Financial Reports



EMPG - Resiliency Activities

- COOP planning and readiness exercising
- CERT activities may be paid for in part with EMPG funds (training and minimal equipment)
- Multi-hazard evacuation planning





FEMA

Region IV External Affairs

FEMA-R4-External-Affairs@fema.dhs.gov

Phil Strouse, Intergovernmental Affairs

770-220-5249