



Coverage is Here King County

**Jail Enrollments in King
County---
Changing the enrollment
culture!!**

King County Context

2

Washington State

- State-based exchange
- Expanded Medicaid (Apple Health)

King County

- 1.8 million people; 39 cities
- Public Health-Seattle & King County:
 - 10th largest health department
 - Lead Navigator Organization for King County region. We lead outreach & pro provide training &
 - certification for Navigators in King County.

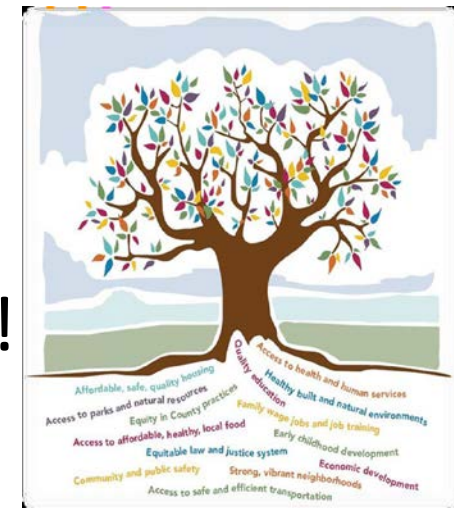
King County Jail

- Jail Capacity 1,697
- Average daily jail population 1,125

Equity & Social Justice—Fair & Just

- This principle, stated in our county's strategic plan, is incorporated into **all of our work at King County**.
- Race, income and neighborhood can be barriers that limit an individual from reaching their full potential. And these can be major predictors on who graduates from high school, become incarcerated or if someone can live long healthy lives.

We must eliminate these barriers &
create fairness & opportunities for everyone!



Why Focus on the Jail Population?

- ❑ One-King County...although Public Health was leading the work of enrollment. All departments in King County had the mission to eliminate health disparities in the most vulnerable populations!!!
- ❑ People of color have some of the [highest health](#) disparities and [incarceration rates](#) in King County.
- ❑ Providing outreach services at the Jail & other locations like the Court House and Court Resource Center allows staff to work one-on-one with clients and enroll them into services.
- ❑ This customer service model supports the most vulnerable members of the community.

In response to the challenge how did Jail Health respond?

- The Jail Health project manager spent a great deal of time reaching out to the criminal justice community—from police to defender agencies, prosecuting attorneys, courts, and the many different entities involved along the way—to ensure that all stakeholders understood how expanded Medicaid eligibility would provide opportunities and open doors for the populations they worked with.
- Jail Health project manager-became a certified Navigator (formerly In-Person Assister). And over time trained other Jail Health staff were trained & certified as Navigators--- including Social Workers!!!
- King County Jail staff successfully adapted its system to match with the Washington state law that only allows for an individual's Medicaid eligibility to be suspended for 30 days while in jail. After 30 days, eligibility must be terminated. JHS & Health Care Authority officials understand the challenges with terminating Medicaid benefits, and having clients re-apply.
- Because more than 80 percent of those in King County jail are released within 30 days, release planners enroll as many individuals as possible. If a person does hit the 30-day mark, planners get a reminder through the electronic health records system and then dis-enroll when necessary.

In response to the challenge continues....

- For inmate-patient's receiving release planning services, the enrollment process [takes place 30 days prior to release](#). This ensures health care enrollment as well as the coordination into service upon release.
- Next....release planners focused on the high-needs inmate-patients, including those with mental health issues, acute or chronic health conditions, substance use disorders, pregnant women, HIV patients, and others who may be particularly vulnerable upon release from jail.
- The planners would enroll clients into coverage & help set medical appointments, coordinate mental health and substance abuse treatment, and arrange other social services.

Other outreach locations

King County Superior Drug Court:

A Certified Navigator was placed in Drug Court to help clients enroll into coverage and make referrals to drug/alcohol treatment. In most cases this helps divert the client from going to jail. We work directly with the probation officer and court staff.

Seattle Municipal Court Resource Center:

It's a day reporting center for newly released individuals. A treatment center for clients on probation and mandated to get counseling along with other social services needs. We staff the center with a certified Navigator to help clients get enrolled into health insurance.

King County Youth Detention:

For over 15 years we've conducted outreach & enrollment at Youth Detention. This continues to be a successful model.

Results

A culture of change!!!

- In 2013 the KC uninsured rate was about 12% & in 2014 it's about 7.6%.
- JHS tracks enrollments of those newly booked into the jail by taking a snapshot of one 24-hour period every month, and has found that it has increased from approximately 11% on Apple Health/Medicaid in 2013 to approximately **43% percent as of July of 2015.**

Lessons Learned

King County Executive Dow Constantine was very committed to assisting this population & getting them enrolled was a priority for his administration. He created a King County Leadership Circle that included leaders from all sections of King County. The all-around support from the County and leaders was critical to our success.

Collaboration is the key---The Navigator Network in King County included over 45 agencies. Many of these agencies had outreach location near the jail. Which allowed clients to have numerous touch-point (i.e. Jail Release, Court Resource Center, Department of Social & Health Services, Downtown Public Health, YWCA & Downtown Emergency Service Center).

Successes must include other service providers: Probation Officers, Specialty courts, Police, & Prosecuting Attorneys. Every agency in the County, understood the importance of getting involved.

We ruled out having a booth at the actual release point—people just want to leave, not stop to get enroll so it was not an opportune time for enrollment,

Enrollment at time of booking wasn't a good opportunity people are dealing with a number of issues at that point.

Enrolling the general population was hard since about 50% of the people in our jail are released within the first 72 hours, and this didn't leave us time to complete the enrollment process.

What's next? Continue education about health benefits & accessing services.

Enrollment into the King County Metro Orca LIFT transportation program.

Apple Health clients are eligible for reduce health fare!!! Reducing the transportation barrier!!

Questions & Discussion

Jail Health Services	Betty Pine Director, Jail Health Services (206) 263-8384 Betty.pine@Kingcounty.gov
Navigator Network	Daphne Pie Manager, Access & Outreach (206) 263-8369 Daphne.pie@kingcounty.gov
Familiar Faces	Travis Erickson Manager, Managed Care (206) 263-9737 Travis.erickson@Kingcounty.gov

Public Health 
Seattle & King County

