

MDC August, 2013

- MDC had been the subject of a class action lawsuit of 18 years.
- The jail was seriously overcrowded with triple celling and mixed classifications.
- The jail consumed over half the County's budget
- The County had invested millions in measures to reduce jail population with little or no impact
- The County has no control over who came to the jail and long they stayed
- There was no to little cooperation among the stakeholders to address what was viewed as the County's problem.

Population Targets

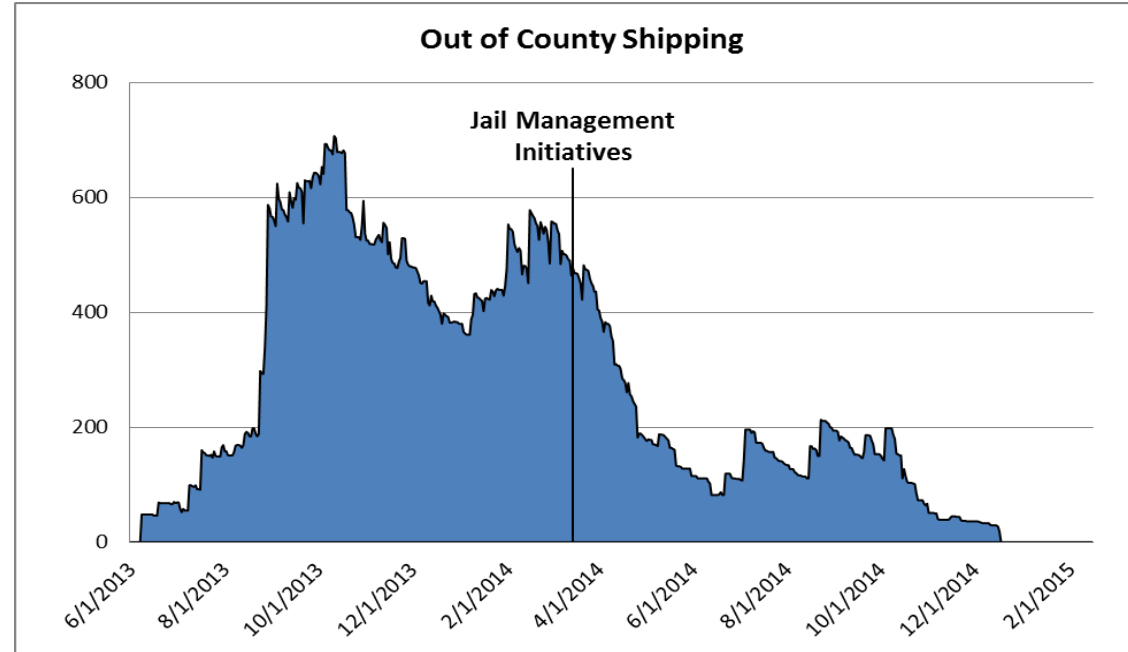
Design Capacity	2,236
-----------------	-------

Operational Capacity	2,019
----------------------	-------

McClendon Order	1950
-----------------	------

Impact of Population Cap

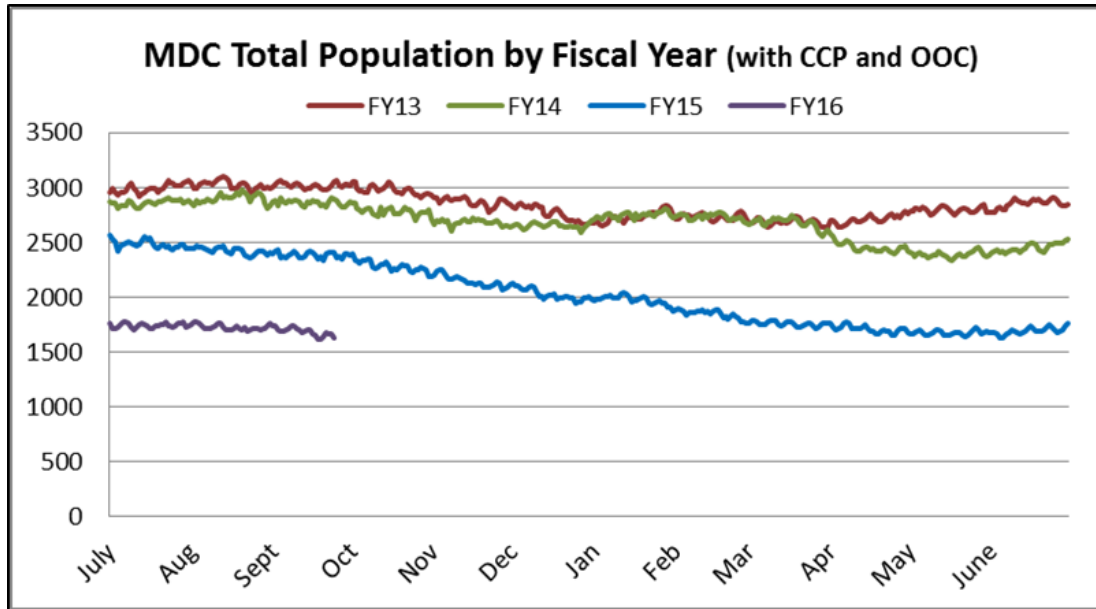
- Population was 2,607 without the use of the Community Custody Program (CCP) 2898 with CCP.
- Building a new unit would have cost millions and additional millions more to operate.
- Bernalillo County already incarcerated at twice the national rate.
- In June, 2013 Bernalillo County began purchasing out-of- county beds: as many as 600 + in October, 2014 on any given day.
- The average cost per day was \$35,000.
- Facilities were as far as Polk County, Texas



County Response

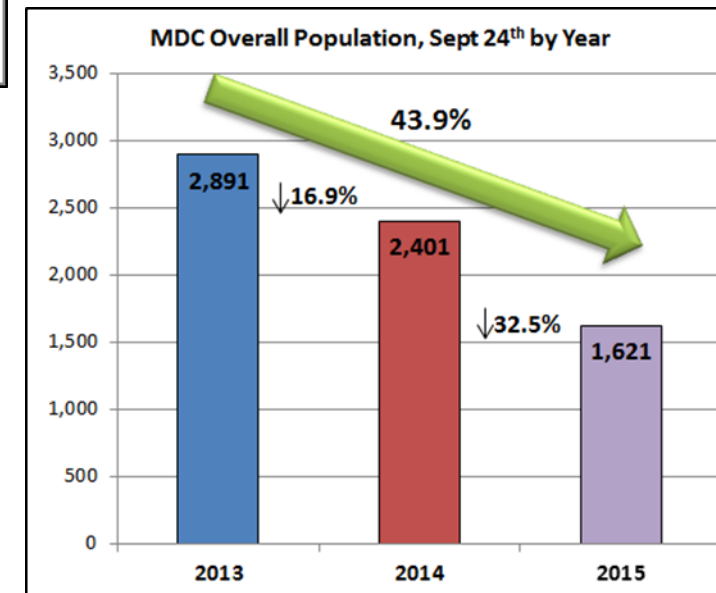
- Legislation:
 - House Bill 608- Bernalillo County Criminal Justice Review Commission
 - Senate Bill 42- Medicaid for Certain Incarcerated Persons
 - Senate Joint Memorial 4- Forensic after care unit
- Hire population management team
- Expert reports- Criminal Justice, Jail and Behavioral Health Data
- Building relationships

Impact of Reform



- ✓ Due to the reduction in jail population, the County successful stopped sending inmates out county December, 2014.

- ✓ Jail Population Management initiatives, with the support and collaboration of the criminal justice partners, has decreased the jail population by 43.9% since Sept 2013.



Behavioral Health Initiatives

- Approximately half the jail population is on the PSU caseload
- Voters supported proposed mental health tax by an overwhelming majority to develop behavioral health system.
- County Commission passed 1/8th tax and contracted through an RFP process with Community Health Partners of Arizona to develop behavioral health business plan for the region.
- Supportive Housing Program developed, funded and implemented
- MATS/PIIP
- Enrollment in Medicaid within the jail facility, CCP and Pretrial Services Programs
- Collaboration with UNM and MCO's
- Participation on Task Force
- Crisis Response System
- Engage all community stakeholders: City, County, State, other counties and jurisdictions, service providers, consumers, criminal justice partners and national experts.
- Data- Understanding out community population and needs.

Lessons Learned

- Understand the system
- Make the investment
- Hire the right people
- Identify strong leadership
- Build relationships for collaboration
- Focus on the community