

**NACo REPORT DETAILS COVID-19 GUIDANCE FOR NURSING HOMES. PG. 6**



**COMING SOON: VOTING CREDENTIALS FOR NACo ELECTIONS. PG. 8**



**COUNTIES CONNECT THRU APPS DURING PANDEMIC. PG. 17**

## COVID-19: Counties move to 'next normal'

by **Rachel Looker**  
staff writer

Communities in counties across the country are getting back to business. With almost all states beginning to reopen in some manner, counties are following reopening strategies as the situation surrounding the COVID-19 pandemic progresses.

Butte County took the lead in California as one of the first counties to meet criteria set by Gov. Gavin Newsom (D) for easing restrictions to reopen.

Butte County Supervisor Debra Lucero told county officials during NACo's recent "Preparing to Reopen America's Counties" virtual town hall that the county is keeping public health officials' advice in mind during their planning process to reopen.

The county had 40 cases of the virus as of May 27. Previously, the county was maintaining 18 cases in total for weeks. Since reopening on May 9, COVID-19 cases doubled.

"We have seen a definite uptick, a doubling of cases when we were very steady before," Lucero said. "At this point, our public health officer believes that we do have community spread and we will be watching this."

Lucero described Newsom's roadmap of four re-opening

stages for counties in the state. The state is now considered to be in early stage 2, which allows retail, related logistics and manufacturing, office workplaces, limited personal services, childcare and essential businesses to open with modifications.

Counties in the state are able to move through stages faster if they see downward trending hospitalizations, a target number of cases per population count, increased testing capacities and contract tracing abilities.

"Each stage has very specific things that we are required to do, and we are following that quite closely in Butte County," she said.

During the reopening process, Butte County established sector teams including health, government, education and faith-based teams to evaluate how to operationalize these guidelines.

Hair salons and barbershops have now opened in the county and must maintain a log for the previous 14 days with customers' names, contact information, times of appointments and stylists, Lucero said. These logs may be provided to Butte County Public Health for contact tracing.

"I think that as we have been

*See REOPENING page 2*



Loudoun County, Va. Supervisor Phyllis Randall, chair of the Board of Supervisors, walks with residents in a demonstration against racial injustice May 31 in Leesburg, Va. Photo by Renss Greene | Loudoun Now

## COUNTY LEADERS RESPOND TO GEORGE FLOYD DEATH

by **Mary Ann Barton**  
editor

The death of an African American man, George Floyd, in police custody May 25 in Minnesota has drawn reactions from county officials across the country, as peaceful and violent protests continue around the nation.

"We extend our heartfelt condolences to the family and friends of George Floyd and communities in pain across the country," said NACo President Mary Ann Borgeson, a Douglas County, Neb. commissioner, in a statement.

"We must redouble our efforts to foster constructive, civil dialogue and actions on

issues related to race," she said. "Violent demonstrations will only deter the worthy pursuit of justice and equality in our communities. As county elected officials, our purpose and focus must be to build safe, vibrant counties where ALL our residents can thrive."

*See PROTESTS page 5*

## Contact tracers work to notify public, limit COVID-19 spread

by **Charlie Ban**  
senior writer

As a longtime veteran of contact tracing work, John Owens, Jr. hasn't exactly been sitting on the bench for the last 20 years, but as the Monroe County, N.Y. Health Department started facing the COVID-19 pandemic, he switched to a no-huddle of-

fense.

It was a major change in pace for an operation that had previously focused on sexually transmitted diseases, but now with a much more contagious virus infecting at least 1.8 million in the United States alone, Owens and his growing team are a part of a public health workforce that experts say

should exceed 100,000.

Contact tracing is one of the crucial elements in most reopening plans, as communities ease up on stay-at-home orders and people start to mix outside of their households again. As testing capacity increases and health departments provide a

*See TRACERS page 3*



# Counties seek to minimize risk, find solutions to open local businesses

## From REOPENING page 1

moving through this plan, our expert panels continue to meet with issues that pop up," she said.

On the East Coast, Brian Abernathy, managing director of the City and County of Philadelphia, said there has been a steady decline of COVID-19 cases since mid-April.

The City and County of Philadelphia, with a population of 1.5 million, is surrounded by counties in Pennsylvania, New Jersey, Delaware and Maryland.

Abernathy said the close proximity to these other counties impacts Philadelphia's health care system, encouraging the city-county to approach reopening in a partnership within the five-county region and the state of Pennsylvania.

"We spent weeks developing shared principles, wanted to

share metrics, wanted to move together as a region," Abernathy said.

However, Pennsylvania Gov. Tom Wolf (D) indicated Philadelphia would be reopening and moving to the yellow phase on June 5 as part of the state's red, yellow and green phased reopening system.

The yellow phase includes reopening retail businesses, childcare centers, outdoor youth day camps, parks-related amenities, manufacturing, warehouse operations and office-based business, among others, all with restrictions and encouraging telework to continue where feasible.

Following state guidelines, Abernathy said Philadelphia is following the plans for a tiered reopening, keeping in mind principles such as limiting the number of people inside businesses, expanding testing and contact tracing, following social



**A restaurant supervisor installs plexiglass at the cash register as Butte County, Calif. moved to reopen restaurants after meeting the state's reopening guidelines.** Photo by Carin Dorghalli, Chico Enterprise-Record

distancing guidelines and protecting vulnerable populations.

"We will be providing very strict restrictions and guidelines on what we're calling 'safe mode,'" Abernathy said about entering the yellow phase.

As these reopening plans take effect, county officials are looking inward to their own offices to see what new changes to adopt when it comes to county employees returning to work.

Executive Managing Director Joe Judge of Jones Lang LaSalle (JLL), a real estate firm that advises county governments and a NACo partner, said the firm is helping clients generate re-entry manuals as counties look to move to the "next normal."

"There's no silver bullet solution to re-occupying your workplace," Judge said. "There are many ways we can seek to minimize risk within the workplace and it's up to each county in their internal teams to determine their comfort level on what is right for each county."

According to a survey conducted by the firm, the top five

## STATES REOPENING

### STATES WITH REGIONAL REOPENING:

California, Illinois, Michigan, New York, Oregon, Pennsylvania, Tennessee and Washington

### STATES REOPENING SOON:

New Jersey (set to reopen June 5)

**\*All other states not listed are reopening**

**Reopening:** States where stay-at-home orders have been lifted, one major sector has reopened or a combination of smaller sectors have reopened.

**Regional reopening:** States where the governor allows certain counties to open and others remain closed

Source: *The New York Times*


solutions to bring the workforce back into the office include providing personal protective equipment, continuing telework options, adding additional janitorial services, rotating employee shifts and taking temperatures of employees,

according to JLL Managing Director Adam Cook.

Cook advised counties take precautions needed in common areas of office spaces as well as adding sanitation stations, signage to remind employees of social distancing behaviors and workstation modifications to reduce contact points.

JLL Senior Vice President Bella Schiro said she believes one third of employees will never work in the office again, one third are anxious to return and the final third lie in the middle and will work both remotely and in the office.

"For county and local governments, we also think that there may be changes in codes and regulatory requirements that may mean you create a new department," she said. "They'll review functions or regulations that tie into sustainability and wellness features... to handle some of those aspects that come out of this pandemic."

For more resources on COVID-19, visit <https://www.naco.org/covid19>. 

## SNAP/STATS



## HURRICANE SEASON JUNE 1-NOV. 30

### HURRICANE

### FINANCIAL IMPACT

Katrina (2005).....	\$165 billion
Harvey (2017).....	\$127.5 billion
Sandy (2012) .....	\$72.2 billion
Irma (2017).....	\$51 billion
Ike (2008) .....	\$35.7 billion

Source: Natl. Climate Data Center



# Healthcare experts call for hiring of 100,000 contact tracers to fend off COVID-19

From TRACERS page 1

more complete picture of how widespread the virus is in their counties, that 100,000 national number can seem less far-fetched.

“Coronavirus is right in our wheelhouse — this is the work we do all day, every day,” Owens said. “The window of opportunity for us to act and find those people who’ve been exposed, find the people who are infected but aren’t sick yet, and ask them to change their behavior, to limit their contact with other people, to stop the transmission, that window of opportunity, it’s very short.”

By the time someone gets a call from a contact tracer, the clock is already running. Because the virus can be contagious for two days before symptoms appear — if they do appear — getting a full roster of people with whom a confirmed COVID patient has been in contact is crucial to limiting the virus’ spread.

From there, the contact tracing team gets to work informing anyone the patient had been within six feet of, for more than 15 minutes, during the contagious period and informing them that they have been exposed and should isolate themselves to prevent spreading the virus further.

Monroe County, which includes Rochester, had 10-12 contact tracers on staff, but has been building its ranks. Its training program can turn out 15 more contact tracers every few days.

Maricopa County, Ariz. has worked to shorten the usual 45-day hiring period for county personnel to expedite contact tracer recruitment, according to Director of Human Services Marcy Flanagan. Tracers are available to work three days after they are hired.

Flanagan said Maricopa County aimed to be able to make 400-500 contact tracing calls a day by July 1.

“We wanted to make sure we could build a system that could be sustainable for the next 6-12 months,” she said.

Monroe County might not need that many, but Owens feels confident that with more



**Aaron Cignarale trains a class of volunteer contact tracers at the Monroe County public health building on Wednesday.** Photo by Brett Dahlberg, WXXI News

than 600 people calling in to volunteer, his department can scale up if need be.

“We’re ready in case we get that big spike in cases,” Owens said. “We hope we don’t have to use them, but we know people are here, wanting to help.”

A coalition of state and local public associations, including the National Association of County and City Health Officials, has encouraged Congress to spend at least \$7.6 billion to expand the scale of disease investigation specialists and the contact tracing workforce through state and local agencies.

“This new federal funding must be flexible to meet local needs, while also recognizing the existing expertise of key public health workers and building the workforce for the long-term,” the organizations wrote in a letter to lawmakers.

The group’s target of at least 100,000 contact tracers would require \$4.8 billion. State departments of health have largely done the professional contact tracer hiring — New Mexico, for example, is aiming for 250 tracers — and then deploying them to local health departments.

Some counties are recruiting employees who aren’t otherwise able to work to fill in as contact tracers, including Santa Clara County, Calif., which has reached out to cities to recruit workers on administrative

leave, according to *The Mercury News*.

While most counties aren’t doing the hiring themselves, Owens said tracers could still get work, possibly offsetting lost wages. New York state advertised contact tracing jobs at \$27 an hour.

“What we believe will happen is when they get the jobs with the state, the state will just place them back with our team, only now they’ll be getting paid, which is awesome,” he said. “It’s great that people want to volunteer, but it’s also great if they’re out of a job and they want to work and they need to work.”

The training for contact tracers is straightforward, and both it and the work can be done remotely.

The Association of State and Territorial Health Officials, Johns Hopkins University, the University of Houston and others offer free online training courses that can be completed in a few hours, which cover the basics of COVID-19, the procedures necessary for successful contact tracing communications and privacy and ethical concerns contact tracers should understand.

The soft skills are important when training contact tracers, said Marcy Flanagan, Maricopa County, Ariz.’s director of human services.

“They need to learn proper investigating skills, such as how

to remain calm when an individual they are working with is under a lot of stress,” she said.

The Johns Hopkins training course, for example, depicts a video call between a disease investigator and a middle-aged man recovering from his infection. As the investigator details the extent to which the patient could have been contagious, he gets distraught and frustrated, and the investigator has to demonstrate empathy while keeping him focused on identifying the people he was close to.

Notifying possible contacts, too, can be fraught. Confidentiality rules limit how much tracers can say about the patient who may have spread the disease, so they must balance privacy with keeping contacts calm as they hear that they will have to isolate for two weeks, possibly complicating their employment.

“Patient confidentiality is so important so individuals feel safe sharing their information with public health,” Flanagan said.

Counties are likely to have more compliance with isolation directions when resources make it easier. Many counties refer contacts to wraparound services to deliver groceries, supplies and medicine to make 14 days of isolation feasible. Owens said that while daily check-ins with contact tracers about symptoms could be te-

dious and time consuming for both tracers and patients, using an app to do all of those communications has simplified things.

“We don’t have to make hundreds of calls every day to check on people’s temperature,” he said.

The difference has been stark from his regular job tracing HIV and other STDs.

“Usually, we’re having to talk to people about their intimate relationships, and that’s difficult,” he said. “With this, people are much more open. People are recognizing, more and more, how contagious this is and how important it is to get the word out. We’re able to reach more people, quickly.”

Still, no matter how hard investigators and contact tracers work, it’s just part of the battle to pin the virus against its own goal line.

“If the community doesn’t do what we ask them to do, it’s not going to make a lick of difference,” Owens said. “That’s why it’s really cool that we’re in this together. We’re not the ones doing all the work, everybody is.”

“If we reach one person who doesn’t have symptoms yet who is going to get the virus and we reach them and ask them to mandatory quarantine, and then they stay home, that’s potentially saving multiple lives. We’re helping, but everyone is doing it themselves.” **CN**

# Justice system marches on in Texas during COVID-19

by **Hon. Terry Cook**

The public health emergency caused by COVID-19 has impacted daily life across the country and around the world. In Williamson County, Texas, our justice system responded to the coronavirus through innovation, ingenuity and a commitment to service.

Our courts in Williamson County have long embraced technology, but the disaster declaration accelerated the pace of innovation. On March 13, the Texas Supreme Court and Court of Criminal Appeals ordered all hearings be held remotely.

Under the leadership of local Administrative Judges Betsy Lambeth of the 425th District Court and John McMaster, County Court-at-Law Four, emergency plans ensuring that the justice system continued to function during the pandemic were activated.

The first step was to identi-

fy critical functions, including child protection hearings, temporary restraining orders and protective orders. Probable cause hearings (magistration) that must occur within 24-48 hours from the time of arrest

were also identified as critical.

If a probable cause is found, the magistrate determines whether to set a personal bond and orders bond conditions and other statuto-

ry conditions. The magistrate also determines if there are any mental health issues and orders an evaluation if necessary, which is conducted by our local mental health authority through telemedicine.

Next, the judges assembled a team to determine how operations could be modified to achieve their goal. Our judges, clerks, court staff, IT personnel, sheriff and juvenile services together adjusted operational plans and assessed technological options to en-



sure essential functions continued, and the public had access to justice.

Our IT Department provided judges with Microsoft Teams, the very popular Zoom, WebEx and CourtCall as options to hold court proceedings.

Court staff created detailed written procedures for hearing participants. Judges and attorneys provided feedback as this process unfolded.

Court-at-Law Judges Doug Arnold (Three), Brandy Hallford (One), and District Judges Stacey Mathews of the 277th Court and Rick Kennon of the 368th Court continue collabo-

rating on jury trial procedures.

The Office of Court Administration is providing guidance on when these procedures can begin, but that won't be until after June. The office is also exploring technology options for empaneling juries.

The strong collaboration between IT and the courts means that participants in hearings could be almost anywhere — including jails and juvenile detention facilities. Through technology, the district attorney's office and law enforcement officers can appear remotely, and the judge can electronically sign search and

arrest warrants.

Staffs from the sheriff's office and juvenile services identified spaces in secure facilities where technology could be established to allow in-custody adult and juvenile defendants the ability to participate in hearings.

Many of the in-custody jail call procedures were developed at the direction of 26th District Court Judge Donna King, who ensured individuals in custody had the opportunity to resolve their cases.

All the innovation and ingenuity culminated in the first virtual hearing on March 24. On March 26, felony jail call dockets (a court procedure for scheduling hearings, trials and related matters) along with magistration hearings (held seven days per week) started.

Despite the ongoing pandemic, justice continues to be served through a human/technology evolution. **CN**

*Terry Cook is a county commissioner in Williamson County, Texas.*

## Congratulations to our 2020 NACo Achievement Award Winners

### BEST IN CATEGORY

#### Arts, Culture and Historic Preservation

Old West Days: Broadening Myths and Legends to Reflect Authentic Histories

*San Bernardino County, Calif.*

#### Children and Youth

Moving Families from the Hotline to a Helpline

*Los Angeles County, Calif.*

#### Civic Education and Public Information

Public Business From The Floor High School Speech Contest

*Sutter County, Calif.*

#### Community and Economic Development

Engaging Diverse Business Communities in Public Procurements

*King County, Wash.*

#### County Administration and Management

A Proven Defense Against Vehicle Title Fraud – The Special Investigation Unit

*Bexar County, Texas*

#### County Resiliency: Infrastructure, Energy and Sustainability

Bring Your Green Challenge

*Montgomery County, Ohio*

#### Criminal Justice and Public Safety

Fresh Start Criminal Record Relief Program

*San Diego County, Calif.*

#### Financial Management

Balancing Act

*Baltimore County, Md.*

#### Health

Spreading our Wings During Tragedy

*Montgomery County, Ohio*

#### Human Services

Helping Hands

*Orange County, Calif.*

#### Information Technology

Medical Examiner's Open Data Portal

*San Diego County, Calif.*

#### Libraries

Library To Go

*Catawba County, N.C.*

#### Parks and Recreation

Supportive Aftercare Program: Community Reintegration, a collaboration with Parks & Rec

*Bernalillo County, N.M.*

#### Personnel Management, Employment and Training

A New, Collaborative Strategy to Build Awareness of Mental Health Issues and Provide a Practical Response

*Alachua County, Fla.*

#### Planning

Buncombe County Community Oriented Development

*Buncombe County, N.C.*

#### Risk and Emergency Management

Preparing for a Wildfire with Neighborhood Fire Drills

*Travis County, Texas*

#### Transportation

Gravel Roads Resurfacing Program:

Innovation in Local Government

*Adams County, Colo.*

#### Volunteers

Busy Buddies

*Loudoun County, Va.*

[www.naco.org/achievementawards](http://www.naco.org/achievementawards)



*‘Addressing inequities that have led us to this point must be our ultimate objective’*



**People protest racial injustice at a march May 31 in Loudoun County, Va. Board Chair Phyllis Randall (in red) gave remarks.** Photo by Renss Greene | Loudoun Now

***From PROTESTS page 1***

In recent years, counties across the country are partnering with stakeholders in their communities to examine policies of racial equity to ensure that all boats are lifted. County sheriff departments are also looking at their training policies to prevent racial profiling.

Meanwhile, last week, county officials participated in marches to show their support for the cause of racial justice and equality in light of the violence in Minnesota.

Standing on the steps of the Loudoun County (Va.) Courthouse, Loudoun County Board of Supervisors Chair Phyllis Randall last week spoke to an estimated crowd of 1,000 who gathered in downtown Lees-

burg, saying: "There's one thing I know for sure: George Floyd was a tipping point, he was a tipping point, but there were so many that came before."

In Michigan, Genesee County Sheriff Chris Swanson laid down his helmet and baton to join a crowd chanting "Walk with us!"

“When I saw the crowd and felt the frustration and the fact that we were only accelerating the issue, it was time to take the helmet off, go to the shot-caller, the lead organizer, give him a big fat hug, and say, ‘What do we need to do?’ That was the tension-breaker ...,” Swanson said in an interview on NBC’s Today show. “They wanted to know what I thought and I looked at the lead organizer and said, listen, that guy (Min-

neapolis Police Department officer Derek Chauvin) is not who cops are. We're horrified. They said, the crowd needs to hear that. I said, get the crowd." Chauvin, faces a second-degree unintentional murder charge in Floyd's death, while three other officers on the scene also face charges.

Spokane County (Wash.) Health Officer Dr. Bob Lutz joined thousands of people last week protesting racial injustice, marching to the Spokane County Courthouse. "It really showed that people of all colors are not willing and not wanting to allow this issue to rest," Lutz told *The Spokesman-Review*. "We mustn't allow the ill will of a few, however, to detract and distract from the will of thousands who rallied yesterday

in downtown Spokane, who peacefully protested the killing of George Floyd and the many black lives.”

Some county officials, including Franklin County, Ohio Commissioner Kevin Boyce, were caught up in protests that turned violent. Marching with other local leaders in Columbus, Boyce was pepper sprayed during a march decrying the death of Floyd.

Fellow Franklin County Commissioners Tyler Lowry and Jodi Andes weighed in, issuing a statement: “We don’t have all of the answers to these very big issues, but we see them and we are committed to working with our community on solutions. Peaceful protest has a long and important history in our country, and we

will not condemn it. We do call on both the protestors and the police to exercise restraint. The safety of all of our community members must be our highest priority. Addressing the systemic inequities that have led us to this point must be our ultimate objective.”

In Minnesota, the Ramsey County Board declared a monthlong state of emergency after the civil unrest, looting and arson following the death of Floyd. The declaration, in effect until June 30, overlaps the county's other ongoing state of emergency for the COVID-19 pandemic response.

Coronavirus testing sites in Los Angeles County were shut down last week when nearly 3,000 people were arrested during protests there. **CN**

# BEHIND — THE — SEAL

**WHITE PINE  
COUNTY, Nev.**

**T**he county seal for White Pine County, Nev. is based off the first official county flag. During the county's centennial in 1969, judges selected a winning design out of 23 entries for the county flag. Lloyd Phillips,

a 12-year-old Ely resident, won the competition to design the flag, which was later used as the design for the county seal.

The seal honors the efforts of those who established the county in 1869 for future generations.

Mount Wheeler and other mountains in the background represent the original silver production in the county.

The rider in the center signifies the Pony Express, which crossed the northern portion of the county around 1860.



*If you would like your county's seal featured in "Behind the Seal," contact Rachel Looker at [rllooker@naco.org](mailto:rllooker@naco.org).*



# NACo releases policy brief on nursing homes

by **Blaire Bryant**

As the congregate residences of 1.26 million vulnerable adults, nursing homes are among the highest-risk targets for COVID-19 in the United States. Counties own and operate 824 skilled nursing facilities and nursing homes and 41 out of the 48 states with county governments plus the District of Columbia have at least one county-owned or county-supported nursing home.

As the number of COVID-19 cases in nursing homes tops 100,000 (128,098 as of May 29), the health, safety and well-being of older adults in nursing homes is a responsibility for hundreds of counties.

NACo has released a policy brief outlining the federal guidance, policies, data and local best practices relating to COVID-19 outbreaks in long-term care facilities. It can be viewed in full at [www.naco.org](http://www.naco.org).

As of March 2020, 127 of the nation's 15,000 nursing homes

had at least one resident who tested positive for COVID-19, according to data from the Centers for Medicare & Medicaid Services.

There has been a flurry of administrative guidance issued and regulatory actions taken to address the spread of the virus in high-risk congregate living environments.

The key concepts of this guidance include:

- Reducing facility risk through the increased use of telemedicine, limiting points of entry and visitors, and implementing increased screening measures for everyone entering the facility for COVID-19 symptoms.
- Isolating symptomatic patients as soon as possible by assembling separate, well-ventilated triage areas and placing patients with suspected or confirmed COVID-19 in private rooms with the door closed, and with private bathrooms where possible. Set aside special medical equipment such

## Testing every U.S. nursing home resident and staff once would cost \$440 million.

as respirators, for those patients with COVID-19.

- Protecting healthcare personnel by emphasizing good hygiene practices such as handwashing, co-horting patients with COVID-19 and limiting the number of staff that provide care for infected patients.

Within its guidance for protection prevention and control measures in healthcare settings, the CDC outlined specific measures that can be taken to protect staff and residents from the spread of the infection. They include:

- Adhering to standard federal guidelines on staff protocols, resident co-horting, screening

of residents and healthcare professionals, and implementing visitation restrictions.

- Assessing the supply of personal protective equipment (PPE) and initiating measures to optimize current supply.
- Ensuring compliance with federal regulations on transparency and reporting

Going forward, NACo has two primary federal advocacy messages regarding nursing homes:

- Increasing federal funding for testing in skilled nursing facilities and long-term care facilities

Data estimates that testing every U.S. nursing home resident and staff once would cost \$440 million nationwide.

Without additional federal and state funding, the federal mandate of regular testing of long-term care facilities is unsustainable and would cause an added burden to strained county budgets during the current public health emergency.

- Supporting legislation that

enhances federal aid for skilled nursing and long-term care facility COVID-19 response efforts

Given the tremendous impact that COVID-19 has had on congregate living facilities, counties need congressional support for legislation that enhances federal aid for skilled nursing and long-term care facilities in subsequent COVID-19 packages.

Without the tools to effectively manage the spread of the disease in these facilities — which include adequate personal protective equipment (PPE), funding for testing, medical supplies and staffing support — counties cannot effectively protect their residents and assist in helping our nation recover from this pandemic. **CN**

*Blaire Bryant is an associate legislative director for NACo's Government Affairs Department focusing on health. Read NACo's policy brief in full at [www.naco.org](http://www.naco.org).*



## HIGH PERFORMANCE LEADERSHIP ACADEMY



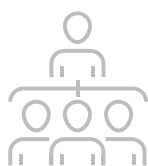
**PROFESSIONAL DEVELOPMENT ACADEMY**  
WE MAKE LEADERS BETTER

The NACo High Performance Leadership Academy is a 12-week, online course that connects your staff with practical leadership training.

### THE ACADEMY FOCUSES ON FIVE ESSENTIAL SKILLS:



**LEAD**



**ORGANIZE**



**COLLABORATE**



**DELIVER**



**COMMUNICATE**

The NACo High Performance Leadership Academy empowers frontline county government professionals with fundamental, practical leadership skills to deliver results for counties and residents.

**Find out more at [NACo.org/Skills](http://NACo.org/Skills)**

With a curriculum developed by **General Colin Powell** and public and private sector leaders, NACo High Performance Leadership Academy gives students the opportunity to learn from world-class faculty. All content is guided by an expert facilitator.



# Stepping Up marks five years of county innovation

by **Nastassia Walsh**

As counties continue to grapple with the COVID-19 pandemic, one area that cannot be ignored is the mental health of county residents. May is National Mental Health Awareness Month and also marks the five-year anniversary of Stepping Up.

Stepping Up is a national initiative to reduce the number of people with mental illnesses in jails. Launched in May of 2015 by NACo and its partners at the Council of State Governments Justice Center and the American Psychiatric Association Foundation, more than 500 counties have passed a resolution or proclamation committing to join the initiative.

Right now, counties are implementing innovative strategies to promote social distancing by rapidly reducing the number of arrests and the number of people being held in their jails, many of whom have a mental illness and/or substance use disorder. As more and more people are being released from jails or being provided with citations in lieu of arrest for minor offenses, one of the challenges is making sure that these individuals are still being connected to treatment and services in the community as part of their reentry process.

Counties big and small are “stepping up” to meet this challenge and finding innovative ways to serve some of their most vulnerable residents during a time of crisis.

## Shelby County, Ala.

Like many of its peers, Shelby County, Ala., has been finding opportunities to safely release people from jail to promote social distancing in its facilities during the COVID-19 pandemic. Shelby County leaders declared its mental health clinicians as essential workers, which allowed the three clinicians who are part of the Central Alabama Wellness jail treatment team to continue providing mental health assessments, treatment and services inside the jail for those who could not be released.

In addition, communi-



ty-based clinicians have been leveraging flexible Medicaid telehealth rules to provide more virtual treatment and services to individuals in their homes and found that it has increased engagement even more than when clinicians could meet with clients in person. As a whole, the community has rallied to provide services to some of its most vulnerable residents.

“Stepping Up has helped solidify connections across the county to better serve people with mental illness in the time of COVID-19,” said Daphne Kendrick, Adult Mental Illness Division director at Central Alabama Wellness. “Law enforcement is using its crisis response team training to keep people from being arrested and connected to our services.”

Kendrick is hopeful that some of the changes in practice that were started because of COVID-19 will stay in place as the community starts to get back to normal.

## Montgomery County, Pa.

As part of its Stepping Up efforts, Montgomery County, Pa., instituted biweekly reentry planning team meetings for justice and behavioral health partners to review cases of individuals with serious mental illness in the jail for opportunities for release and connections to treatment. When COVID-19 hit, these types of connections and releases became more urgent, and the district attorney and public offender created a process to review a broader set

of cases for release based on charges as well as individuals’ treatment needs.

“Having the district attorney and public defender at the table has really enhanced our ability to not only safely release certain people from jail quickly to promote social distancing, but to identify people who would benefit from being in a community setting for treatment instead of jail,” said Pam Howard, administrator for Mental Health, Developmental Disabilities and Early Intervention at the Montgomery County Department of Health and Human Services.

A bonus of social distancing practices has been that the reentry planning team meetings turned to a virtual platform that has allowed additional community partners, social service and treatment providers, advocates and other stakeholders to join, creating a broader set of resources and coordination.

Previously, there was not enough space in the meeting rooms to include these partners in these meetings. In addition, through these meetings, the county is leveraging its mobile crisis team and community-based clinicians to regularly engage with people through telehealth and in-person meetings to maintain care plans.

Howard and her team expressed that Stepping Up helped the county to create a structure and process for addressing the needs of their most vulnerable residents so that when COVID-19 hit, the infrastructure was there to move quickly.

NACo and the national Stepping Up initiative are here to support counties struggling with COVID-19 and addressing the mental health needs of residents. For more information, visit [www.NACo.org/Coronavi-](http://www.NACo.org/Coronavi-)

[www.stepuptogether.org/COVID19](http://www.stepuptogether.org/COVID19). **CN**

*Nastassia Walsh is associate program director for community health and justice in NACo’s County Innovations Lab.*

## ON THE MOVE

### NACo STAFF

- **Katie Sullivan** has joined NACo as program manager for Resilient Economies & Communities. She previously worked at the Bipartisan Policy Center as a project associate and project coordinator and she earned a bachelor’s degree in History and Hispanic Studies from the Universidad de Seville in Seville, Spain.
- Chief Technology Officer **Rita Reynolds** participated in a discussion May 21 for a Fedinsider webinar, “How Automated IT is Revolutionizing Government.”
- Associate Program Director **Nastassia Walsh** and county officials from Clark County, Nev. and Pennington County, S.D. spoke May 21 on a co-hosted NACo and National League of Cities panel of city/county officials for the Safety and Justice Challenge Virtual Network on involving local leadership in justice reform efforts.
- **Reynolds** also served as a panelist May 27 on a Route Fifty webinar, “Government Records Management & Collaboration: Security and Resources in Times of Strain.”
- Associate Program Director **Alejandra Montoya-Boyer** served as host of the Reopening America’s Counties Virtual Town Hall May 27.



**Sullivan**



**Reynolds**



**Walsh**



**Montoya-Boyer**



# NACo election credentials forms to be mailed in June

by **Lauren Wilson**

NACo's 2020 Virtual Annual Business Meeting is right around the corner. This year's election will be held Monday, July 20 at 2 p.m. ET. Counties will vote on proposed amendments to association bylaws and elect NACo officers for the coming year.

Voting credentials attest to a county's eligibility to vote and verify the number of votes they have for NACo elections.

NACo validates this information and other voting details through the credentials form. In mid-June, every member county's chief elected official and clerk will receive a voting credentials mailing which will provide a link to the online voting credentials form and frequently asked questions. Delegates can be assigned one of two ways:

1. Self-selection through the virtual Annual Business Meeting individual registration process

2. Chief elected officials may

designate a voting delegate by using information received on the credentials mailing. They can access an online portal using the code on the mailer or they can sign and send a scanned copy of the credentials form to NACo.

Deadline to register and determine your county's voting delegate is Friday, July 17 by 5 p.m. ET. To facilitate the voting process, we encourage members to authorize one voting delegate per county.

Credentials information will be available to Annual Business Meeting registrants and can be accessed online at [www.naco.org/governance](http://www.naco.org/governance).

In order to be eligible to vote, your county/parish/borough is required to:

- Register for the 2020 Virtual Annual Business Meeting, Monday, July 20 at 2 p.m. (ET).
- Pay 2020 NACo membership dues.
- Designate a voting delegate to cast your county's vote in the election.

Your state association is



authorized to receive or cast any unclaimed ballots for counties that have registered delegates, unless your county's chief elected officer has expressly prohibited the state association from doing so. A county may also elect not to cast its ballot. NACo's Credentials Committee ensures all member counties participating in the election process, either for proposed amendments to association bylaws or electing NACo officers, do so in the most efficient and fair manner. The committee helps the process run smoothly, resolves

credentials disputes and assists during the election itself. The 2020 Credentials Committee members are:


- Riki Hokama, Councilmember, Maui County, Hawaii – Chair
- Cindy Bulloch, County Assessor, Iron County, Utah – Member
- Kurt Gibbs, Board Chair, Marathon County, Wisconsin – Member

The NACo bylaws also provide for a Parliamentarian, Reading Clerk and Tally Clerk to aid in the election process. They are:

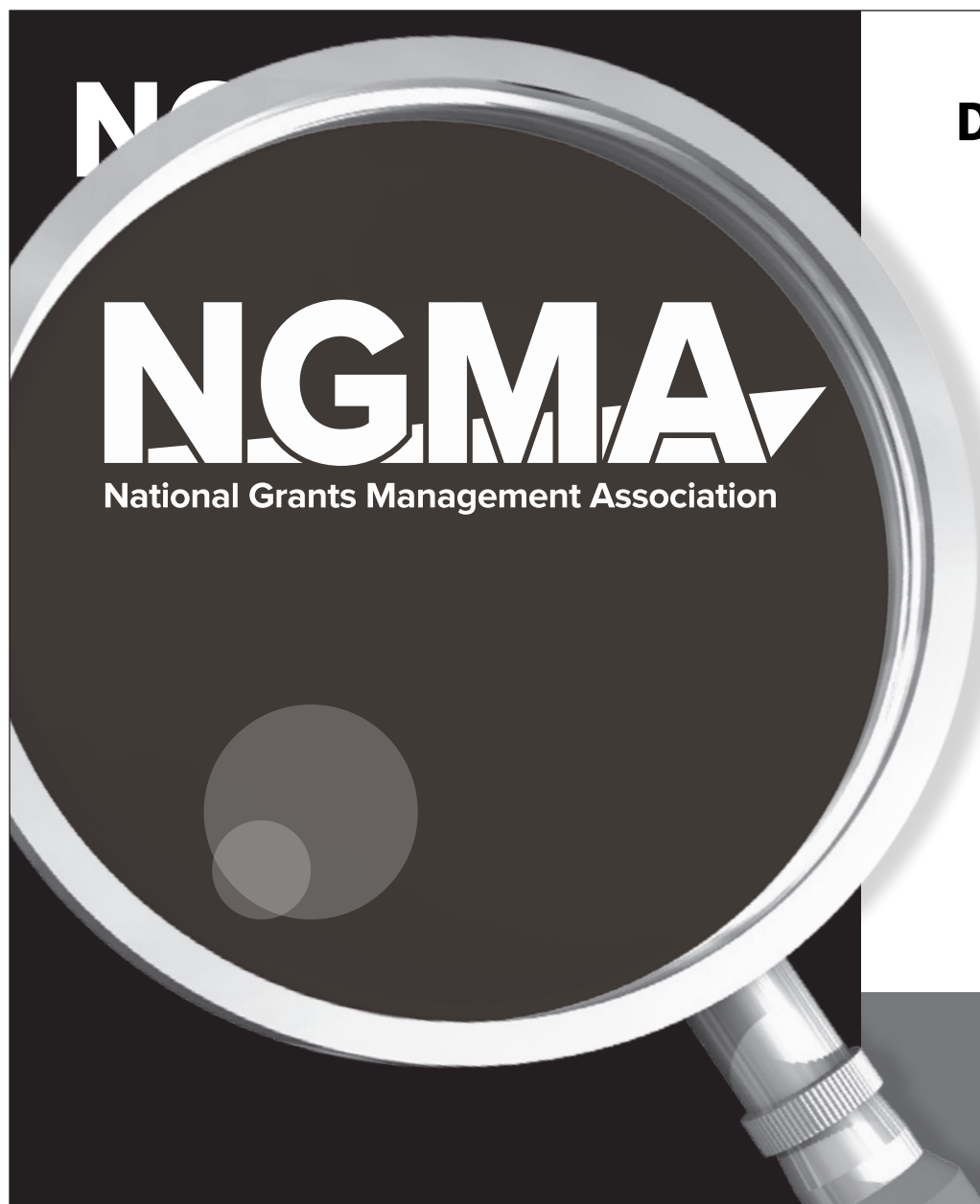
- Chris Rodgers, Commissioner, Douglas County, Nebraska: Parliamentarian
- Merceria Ludgood, Commissioner, Mobile County, Alabama: Reading Clerk
- Batina Dodge, County Clerk, Scotland County, Missouri: Tally Clerk

Following are the vote totals for each member county. (The number of votes per county is determined by the amount of dues it pays, which are based on population.)

- Counties with dues of \$450 to \$1,199 receive one vote
- Counties with dues of \$1,200 to \$2,399 receive two votes
- Counties with dues of \$2,400 to \$3,599 receive three votes, and so on
- The maximum number of votes a county can receive are 51.

Questions? Email [credentials@NACo.org](mailto:credentials@NACo.org) 

*Lauren Wilson is the Membership Associate in NACo's Public Affairs Department.*



## Does Your County Staff Handling GRANTS Need Help?

The National Grants Management Association (NGMA) can assist with:

- **Membership Benefits**—Grants Management Body of Knowledge Guide printed and online
- **Webinar Library**
- **Annual Grants Training Summit** - April 6-8, Arlington, VA
- **Grants Management Body of Knowledge Training (GMBok)**
  - Grants Management "101" for your staff
  - Available for your county group virtually training multiple county staff at once
- **Networking and Best Practice Sharing**
- **Certified Grants Management Specialist (CGMS)**
- **Many more resources only available to members**

Ensure the funding continues from important sources like the CARES Act and has the most impact on your county residents.

**Take a look at NGMA today!**

[www.ngma.org](http://www.ngma.org)  
202-308-3788  
[andrew@ngma.org](mailto:andrew@ngma.org)  
Contact: Andrew S. Goldschmidt, CAE--Executive Director





NACo’s Annual Business Meeting, to be held remotely July 20, will give delegates from member counties an opportunity to vote for the association’s new executive leadership team and emergency resolutions for the American County Platform. Following are the vote totals for each member county. The number of votes assigned to each county is based on a formula that awards one vote for every \$1,200 (or fraction thereof) paid in NACo dues. County delegates must register for the Annual Business Meeting, set for Monday, July 20, to cast their votes.

Alabama

Autauga County .....	1
Baldwin County .....	3
Barbour County .....	1
Bibb County .....	1
Blount County .....	1
Bullock County .....	1
Butler County .....	1
Calhoun County .....	2
Chambers County .....	1
Cherokee County .....	1
Chilton County .....	1
Choctaw County .....	1
Clarke County .....	1
Clay County .....	1
Cleburne County .....	1
Coffee County .....	1
Colbert County .....	1
Conecuh County .....	1
Coosa County .....	1
Covington County .....	1
Crenshaw County .....	1
Cullman County .....	2
Dale County .....	1
Dallas County .....	1
DeKalb County .....	2
Elmore County .....	2
Escambia County .....	1
Etowah County .....	2
Fayette County .....	1
Franklin County .....	1
Geneva County .....	1
Greene County .....	1
Hale County .....	1
Henry County .....	1
Houston County .....	2
Jackson County .....	1
Jefferson County .....	11
Lamar County .....	1
Lauderdale County .....	2
Lawrence County .....	1
Lee County .....	3
Limestone County .....	2
Lowndes County .....	1
Macon County .....	1
Madison County .....	6
Marengo County .....	1
Marion County .....	1
Marshall County .....	2
Mobile County .....	7
Monroe County .....	1
Montgomery County .....	4
Morgan County .....	2
Perry County .....	1
Pickens County .....	1

Pike County .....	1
Randolph County .....	1
Russell County .....	1
Shelby County .....	3
St. Clair County .....	2
Sumter County .....	1
Talladega County .....	2
Tallapoosa County .....	1
Tuscaloosa County .....	4
Walker County .....	2
Washington County .....	1
Wilcox County .....	1
Winston County .....	1
<b>Total 113</b>	

Alaska

Aleutians East Borough .....	1
Anchorage Municipality .....	5
Bristol Bay Borough .....	1
City and Borough of Juneau .....	1
City and Borough of Sitka .....	1
City and Borough of Wrangell .....	1
City and Borough of Yakutat .....	1
Denali Borough .....	1
Fairbanks North Star Borough ...	2
Haines Borough .....	1
Kenai Peninsula Borough .....	1
Ketchikan Gateway Borough .....	1
Kodiak Island Borough .....	1
Lake And Peninsula Borough .....	1
Matanuska-Susitna Borough .....	2
North Slope Borough .....	1
Northwest Arctic Borough .....	1
Petersburg Borough .....	1
Skagway Borough .....	1

Total 25

Arizona

Apache County .....	2
Cochise County .....	3
Coconino County .....	3
Gila County .....	1
Graham County .....	1
Greenlee County .....	1
La Paz County .....	1
Maricopa County .....	42
Mohave County .....	3
Navajo County .....	2
Pima County .....	16
Pinal County .....	3
Santa Cruz County .....	1
Yavapai County .....	3
Yuma County .....	3

Total 85

Arkansas

Arkansas County .....	1
Ashley County .....	1
Baxter County .....	1
Benton County .....	3
Boone County .....	1
Bradley County .....	1
Calhoun County .....	1
Carroll County .....	1
Chicot County .....	1
Clark County .....	1
Clay County .....	1
Cleburne County .....	1
Cleveland County .....	1
Columbia County .....	1
Conway County .....	1
Craighead County .....	2
Crawford County .....	1
Crittenden County .....	1
Cross County .....	1
Dallas County .....	1
Desha County .....	1
Drew County .....	1
Faulkner County .....	2
Franklin County .....	1
Fulton County .....	1
Garland County .....	2
Grant County .....	1
Greene County .....	1
Hempstead County .....	1
Hot Spring County .....	1
Howard County .....	1
Independence County .....	1
Izard County .....	1
Jackson County .....	1
Jefferson County .....	2
Johnson County .....	1
Lafayette County .....	1
Lawrence County .....	1
Lee County .....	1
Lincoln County .....	1
Little River County .....	1
Logan County .....	1
Lonoke County .....	1
Madison County .....	1
Marion County .....	1
Miller County .....	1
Mississippi County .....	1
Monroe County .....	1
Montgomery County .....	1
Nevada County .....	1
Newton County .....	1
Ouachita County .....	1
Perry County .....	1
Phillips County .....	1

Pike County .....	1
Poinsett County .....	1
Polk County .....	1
Pope County .....	2
Prairie County .....	1
Pulaski County .....	7
Randolph County .....	1
Saline County .....	2
Scott County .....	1
Searcy County .....	1
Sebastian County .....	3
Sevier County .....	1
Sharp County .....	1
St. Francis County .....	1
Stone County .....	1
Union County .....	1
Van Buren County .....	1
Washington County .....	3
White County .....	2
Woodruff County .....	1
Yell County .....	1

Total 94

California

Alameda County .....	26
Alpine County .....	1
Amador County .....	1
Butte County .....	4
Calaveras County .....	1
Colusa County .....	1
Contra Costa County .....	18
Del Norte County .....	1
El Dorado County .....	3
Fresno County .....	16
Glenn County .....	1
Humboldt County .....	3
Imperial County .....	3
Inyo County .....	1
Kern County .....	13
Kings County .....	3
Lake County .....	2
Lassen County .....	1
Los Angeles County .....	51
Madera County .....	3
Marin County .....	5
Mariposa County .....	1
Mendocino County .....	2
Merced County .....	4
Modoc County .....	1
Mono County .....	1
Monterey County .....	7
Napa County .....	3
Nevada County .....	2
Orange County .....	42
Placer County .....	5

Plumas County .....	1
Riverside County .....	29
Sacramento County .....	24
San Benito County .....	1
San Bernardino County .....	33
San Diego County .....	42
San Francisco City and County .....	14
San Joaquin County .....	11
San Luis Obispo County .....	5
San Mateo County .....	12
Santa Barbara County .....	8
Santa Clara County .....	30
Santa Cruz County .....	5
Shasta County .....	3
Sierra County .....	1
Siskiyou County .....	1
Solano County .....	7
Sonoma County .....	9
Stanislaus County .....	9
Sutter County .....	2
Tehama County .....	2
Trinity County .....	1
Tulare County .....	8
Tuolumne County .....	1
Ventura County .....	14
Yolo County .....	4
Yuba County .....	2

Total 505

Colorado

Adams County .....	7
Alamosa County .....	1
Arapahoe County .....	10
Archuleta County .....	1
Baca County .....	1
Bent County .....	1
Boulder County .....	5
Broomfield City and County .....	1
Chaffee County .....	1
Cheyenne County .....	1
Clear Creek County .....	1
Conejos County .....	1
Crowley County .....	1
Custer County .....	1
Delta County .....	1
Dolores County .....	1
Douglas County .....	3
Eagle County .....	1
El Paso County .....	10
Elbert County .....	1
Fremont County .....	1
Garfield County .....	1
Gilpin County .....	1
Grand County .....	1



Gunnison County.....	1
Hinsdale County.....	1
Huerfano County.....	1
Jackson County.....	1
Kit Carson County.....	1
La Plata County.....	1
Lake County.....	1
Larimer County.....	5
Las Animas County.....	1
Lincoln County.....	1
Logan County.....	1
Mesa County.....	3
Mineral County.....	1
Moffat County.....	1
Montezuma County.....	1
Montrose County.....	1
Morgan County.....	1
Otero County.....	1
Ouray County.....	1
Park County.....	1
Phillips County.....	1
Prowers County.....	1
Pueblo County.....	3
Rio Blanco County.....	1
Rio Grande County.....	1
Routt County.....	1
Saguache County.....	1
San Juan County.....	1
San Miguel County.....	1
Sedgwick County.....	1
Summit County.....	1
Teller County.....	1
Weld County.....	4
Yuma County.....	1

Total 99

Delaware

Kent County.....	3
New Castle County.....	9
Sussex County.....	3

Total 15

Florida

Alachua County.....	5
Baker County.....	1
Bay County.....	3
Brevard County.....	10
Broward County.....	30
Calhoun County.....	1
Charlotte County.....	3
Citrus County.....	3
Clay County.....	3
Collier County.....	5
Columbia County.....	2
DeSoto County.....	1
Dixie County.....	1
Duval County/ City of Jacksonville.....	15
Escambia County.....	5
Flagler County.....	1
Franklin County.....	1
Gadsden County.....	1
Gilchrist County.....	1
Glades County.....	1
Gulf County.....	1
Hamilton County.....	1
Hendry County.....	1
Hernando County.....	3

Highlands County.....	2
Hillsborough County.....	19
Holmes County.....	1
Indian River County.....	3
Jackson County.....	1
Jefferson County.....	1
Lafayette County.....	1
Lake County.....	4
Lee County.....	9
Leon County.....	5
Levy County.....	1
Liberty County.....	1
Madison County.....	1
Manatee County.....	5
Marion County.....	5
Martin County.....	3
Miami-Dade County.....	42
Monroe County.....	2
Nassau County.....	2
Okaloosa County.....	4
Okeechobee County.....	1
Orange County.....	16
Osceola County.....	3
Palm Beach County.....	21
Pasco County.....	7
Pinellas County.....	16
Polk County.....	10
Putnam County.....	2
Santa Rosa County.....	3
Sarasota County.....	7
Seminole County.....	7
St. Lucie County.....	4
Suwannee County.....	1
Taylor County.....	1
Union County.....	1
Volusia County.....	9
Wakulla County.....	1
Walton County.....	1
Washington County.....	1

Total 323

Georgia

Appling County.....	1
Athens-Clarke County.....	2
Augusta-Richmond County.....	4
Baldwin County.....	1
Banks County.....	1
Bartow County.....	2
Bleckley County.....	1
Brooks County.....	1
Bryan County.....	1
Butts County.....	1
Camden County.....	1
Carroll County.....	2
Catoosa County.....	1
Charlton County.....	1
Chatham County.....	5
Cherokee County.....	3
Clayton County.....	5
Clinch County.....	1
Colquitt County.....	1
Columbia County.....	2
Cusseta-Chattahoochee County.....	1
Dade County.....	1
Dawson County.....	1
DeKalb County.....	12
Dougherty County.....	2

Douglas County.....	2
Elbert County.....	1
Fannin County.....	1
Fayette County.....	2
Floyd County.....	2
Forsyth County.....	2
Fulton County.....	16
Georgetown-Quitman County.....	1
Gilmer County.....	1
Glynn County.....	2
Grady County.....	1
Gwinnett County.....	10
Hall County.....	3
Hancock County.....	1
Haralson County.....	1
Harris County.....	1
Hart County.....	1
Henry County.....	2
Jackson County.....	1
Jeff Davis County.....	1
Jefferson County.....	1
Jones County.....	1
Lamar County.....	1
Lee County.....	1
Liberty County.....	2
Lowndes County.....	2
Lumpkin County.....	1
Macon-Bibb County.....	3
Marion County.....	1
McDuffie County.....	1
Mitchell County.....	1
Monroe County.....	1
Morgan County.....	1
Newton County.....	2
Oconee County.....	1
Oglethorpe County.....	1
Peach County.....	1
Polk County.....	1
Putnam County.....	1
Rabun County.....	1
Screven County.....	1
Spalding County.....	2
Stewart County.....	1
Talbot County.....	1
Taylor County.....	1
Thomas County.....	1
Troup County.....	2
Twiggs County.....	1
Union County.....	1
Walton County.....	1
Ware County.....	1
Warren County.....	1
Wayne County.....	1
Wheeler County.....	1
White County.....	1
Whitfield County.....	2
Wilkinson County.....	1

Total 151

Hawaii

Hawaii County.....	3
Honolulu City and County.....	16
Kauai County.....	2
Maui County.....	3

Total 24

Idaho

Ada County.....	6
-----------------	---

Adams County.....	1
Bannock County.....	2
Bear Lake County.....	1
Benewah County.....	1
Bingham County.....	1
Blaine County.....	1
Boise County.....	1
Bonner County.....	1
Bonneville County.....	2
Boundary County.....	1
Butte County.....	1
Camas County.....	1
Canyon County.....	3
Caribou County.....	1
Cassia County.....	1
Clark County.....	1
Clearwater County.....	1
Custer County.....	1
Elmore County.....	1
Franklin County.....	1
Fremont County.....	1
Gem County.....	1
Gooding County.....	1
Idaho County.....	1
Jefferson County.....	1
Jerome County.....	1
Kootenai County.....	2
Latah County.....	1
Lemhi County.....	1
Lewis County.....	1
Lincoln County.....	1
Madison County.....	1
Minidoka County.....	1
Nez Perce County.....	1
Oneida County.....	1
Owyhee County.....	1
Payette County.....	1
Power County.....	1
Shoshone County.....	1
Teton County.....	1
Twin Falls County.....	2
Valley County.....	1
Washington County.....	1

Total 55

Illinois

Alexander County.....	1
Bond County.....	1
Boone County.....	1
Brown County.....	1
Bureau County.....	1
Calhoun County.....	1
Carroll County.....	1
Cass County.....	1
Champaign County.....	4
Christian County.....	1
Clark County.....	1
Clay County.....	1
Clinton County.....	1
Cook County.....	49
Crawford County.....	1
Cumberland County.....	1
De Witt County.....	1
DeKalb County.....	2
DuPage County.....	16
Edgar County.....	1
Edwards County.....	1
Effingham County.....	1

Fayette County.....	1
Fulton County.....	1
Gallatin County.....	1
Grundy County.....	1
Hamilton County.....	1
Henderson County.....	1
Henry County.....	1
Iroquois County.....	1
Jackson County.....	2
Jasper County.....	1
Jefferson County.....	1
Jo Daviess County.....	1
Johnson County.....	1
Kankakee County.....	2
Kendall County.....	1
Knox County.....	1
Lake County.....	12
LaSalle County.....	2
Lee County.....	1
Livingston County.....	1
Logan County.....	1
Macon County.....	2
Madison County.....	5
Marion County.....	1
Marshall County.....	1
Mason County.....	1
Massac County.....	1
McDonough County.....	1
McHenry County.....	5
McLean County.....	3
Menard County.....	1
Monroe County.....	1
Montgomery County.....	1
Morgan County.....	1
Moultrie County.....	1
Ogle County.....	1
Peoria County.....	4
Perry County.....	1
Piatt County.....	1
Pike County.....	1
Pope County.....	1
Pulaski County.....	1
Putnam County.....	1
Randolph County.....	1
Richland County.....	1
Saline County.....	1
Schuyler County.....	1
Shelby County.....	1
St. Clair County.....	5
Stark County.....	1
Stephenson County.....	1
Tazewell County.....	3
Union County.....	1
Wabash County.....	1
Warren County.....	1
Washington County.....	1
Wayne County.....	1
White County.....	1
Whiteside County.....	1
Will County.....	9
Williamson County.....	2
Winnebago County.....	5
Woodford County.....	1

Total 199

Indiana

Adams County.....	1
Allen County.....	6



Bartholomew County.....	2
Benton County .....	1
Blackford County.....	1
Boone County .....	1
Brown County.....	1
Clinton County .....	1
Daviess County .....	1
Dearborn County.....	1
Decatur County .....	1
Dubois County .....	1
Elkhart County .....	4
Floyd County .....	2
Franklin County .....	1
Fulton County.....	1
Gibson County .....	1
Greene County .....	1
Hamilton County .....	3
Harrison County .....	1
Hendricks County.....	2
Henry County .....	1
Indianapolis and Marion County .....	16
Jay County .....	1
Jennings County.....	1
Johnson County.....	3
Knox County.....	1
Kosciusko County.....	2
Lake County.....	9
LaPorte County .....	2
Madison County .....	3
Marshall County .....	1
Monroe County .....	3
Montgomery County.....	1
Morgan County.....	2
Newton County .....	1
Noble County .....	1
Ohio County .....	1
Owen County.....	1
Parke County.....	1
Perry County .....	1
Pike County.....	1
Posey County .....	1
Pulaski County .....	1
Putnam County .....	1
Randolph County .....	1
Rush County.....	1
Shelby County.....	1
Spencer County.....	1
Steuben County .....	1
Sullivan County .....	1
Switzerland County .....	1
Tipton County.....	1
Vanderburgh County.....	3
Vermillion County.....	1
Vigo County.....	2
Washington County .....	1
Wayne County .....	2
Wells County .....	1

Total 108

Iowa

Adair County .....	1
Allamakee County .....	1
Appanoose County.....	1
Benton County .....	1
Black Hawk County.....	3
Boone County .....	1
Bremer County .....	1

Buchanan County.....	1
Buena Vista County .....	1
Butler County .....	1
Calhoun County .....	1
Carroll County .....	1
Cedar County .....	1
Cerro Gordo County .....	1
Cherokee County.....	1
Chickasaw County.....	1
Clarke County.....	1
Clay County.....	1
Clayton County.....	1
Clinton County .....	1
Crawford County .....	1
Dallas County.....	1
Davis County.....	1
Des Moines County .....	1
Dickinson County .....	1
Dubuque County .....	2
Emmet County .....	1
Franklin County .....	1
Fremont County.....	1
Greene County .....	1
Grundy County .....	1
Hamilton County .....	1
Hardin County .....	1
Harrison County .....	1
Henry County .....	1
Howard County.....	1
Humboldt County .....	1
Jackson County .....	1
Jasper County .....	1
Johnson County.....	3
Jones County .....	1
Kossuth County.....	1
Lee County.....	1
Linn County.....	4
Lucas County .....	1
Lyon County .....	1
Mahaska County .....	1
Marion County .....	1
Marshall County .....	1
Mills County .....	1
Mitchell County .....	1
Monona County.....	1
Montgomery County.....	1
Osceola County.....	1
Palo Alto County.....	1
Plymouth County.....	1
Pocahontas County .....	1
Polk County.....	8
Pottawattamie County.....	2
Poweshiek County .....	1
Sac County .....	1
Scott County .....	3
Shelby County .....	1
Sioux County.....	1
Story County .....	2
Tama County .....	1
Union County .....	1
Wapello County.....	1
Warren County .....	1
Washington County .....	1
Wayne County .....	1
Webster County.....	1
Winnebago County .....	1
Winneshiek County.....	1
Woodbury County.....	2

Worth County .....	1
Wright County .....	1

Total 97

Kansas

Allen County.....	1
Atchison County.....	1
Barber County .....	1
Bourbon County .....	1
Butler County .....	2
Cloud County .....	1
Coffey County.....	1
Crawford County .....	1
Decatur County .....	1
Dickinson County .....	1
Douglas County.....	2
Elk County.....	1
Ellis County.....	1
Ellsworth County .....	1
Finney County .....	1
Ford County .....	1
Franklin County .....	1
Geary County .....	1
Gove County .....	1
Greeley County.....	1
Greenwood County.....	1
Hamilton County .....	1
Harper County.....	1
Harvey County.....	1
Haskell County .....	1
Jackson County .....	1
Jefferson County .....	1
Jewell County .....	1
Johnson County.....	9
Labette County .....	1
Leavenworth County.....	2
Linn County.....	1
Marion County .....	1
Marshall County.....	1
McPherson County .....	1
Miami County.....	1
Mitchell County .....	1
Morris County.....	1
Nemaha County .....	1
Neosho County .....	1
Ness County .....	1
Norton County.....	1
Osage County.....	1
Phillips County .....	1
Pottawatomie County .....	1
Pratt County.....	1
Rawlins County .....	1
Reno County .....	2
Republic County.....	1
Rice County.....	1
Riley County .....	2
Rooks County.....	1
Saline County.....	1
Sedgwick County.....	9
Seward County.....	1
Shawnee County .....	3
Sheridan County .....	1
Sherman County .....	1
Smith County .....	1
Stafford County.....	1
Stanton County .....	1
Stevens County .....	1
Trego County .....	1

Unified Government of Wyandotte County/Kansas City .....	3
Wilson County.....	1

Total 90

Kentucky

Adair County .....	1
Allen County.....	1
Anderson County.....	1
Ballard County .....	1
Barren County.....	1
Bath County .....	1
Bell County .....	1
Boone County .....	2
Bourbon County.....	1
Boyd County .....	1
Boyle County.....	1
Bracken County.....	1
Breathitt County.....	1
Breckinridge County .....	1
Bullitt County .....	2
Butler County .....	1
Caldwell County .....	1
Calloway County.....	1
Campbell County.....	2
Carlisle County .....	1
Carroll County .....	1
Carter County.....	1
Casey County .....	1
Christian County.....	2
Clark County .....	1
Clay County.....	1
Clinton County .....	1
Crittenden County .....	1
Cumberland County .....	1
Daviess County .....	2
Edmonson County.....	1
Elliott County .....	1
Estill County.....	1
Fleming County .....	1
Floyd County.....	1
Franklin County .....	1
Fulton County.....	1
Gallatin County .....	1
Garrard County.....	1
Grant County.....	1
Graves County.....	1
Grayson County.....	1
Green County .....	1
Greenup County .....	1
Hancock County.....	1
Hardin County.....	2
Harlan County .....	1
Harrison County .....	1
Hart County.....	1
Henderson County.....	1
Henry County .....	1
Hickman County.....	1
Hopkins County.....	1
Jackson County .....	1
Jessamine County .....	1
Johnson County.....	1
Kenton County .....	3
Knott County.....	1
Knox County.....	1
LaRue County.....	1
Laurel County.....	1
Lawrence County.....	1

Lee County.....	1
Leslie County .....	1
Letcher County.....	1
Lewis County.....	1
Lexington-Fayette County .....	5
Lincoln County .....	1
Livingston County.....	1
Logan County.....	1
Louisville Jefferson County Metro Government .....	13
Lyon County .....	1
Madison County .....	2
Magoffin County.....	1
Marion County .....	1
Marshall County .....	1
Martin County .....	1
Mason County.....	1
McCracken County .....	2
McCreary County.....	1
McLean County .....	1
Meade County.....	1
Menifee County.....	1
Mercer County.....	1
Metcalfe County .....	1
Monroe County .....	1
Montgomery County.....	1
Morgan County.....	1
Muhlenberg County .....	1
Nelson County.....	1
Nicholas County.....	1
Ohio County .....	1
Oldham County .....	1
Owen County.....	1
Owsley County .....	1
Pendleton County.....	1
Perry County .....	1
Pike County.....	2
Powell County .....	1
Pulaski County .....	2
Robertson County .....	1
Rockcastle County.....	1
Rowan County .....	1
Russell County .....	1
Scott County .....	1
Shelby County.....	1
Simpson County.....	1
Spencer County.....	1
Taylor County .....	1
Todd County.....	1
Trigg County .....	1
Trimble County .....	1
Union County .....	1
Warren County .....	2
Washington County .....	1
Wayne County .....	1
Webster County.....	1
Whitley County .....	1
Wolfe County.....	1
Woodford County .....	1

Total 149

Louisiana

Acadia Parish.....	2
Allen Parish.....	1
Ascension Parish.....	2
Beauregard Parish.....	1
Bienville Parish.....	1
Bossier Parish .....	2



Caddo Parish .....	5
Calcasieu Parish .....	4
Caldwell Parish.....	1
Cameron Parish .....	1
Claiborne Parish.....	1
Concordia Parish.....	1
DeSoto Parish.....	1
East Baton Rouge Parish.....	8
East Feliciana Parish .....	1
Evangeline Parish .....	1
Franklin Parish .....	1
Grant Parish.....	1
Iberia Parish.....	2
Iberville Parish .....	1
Jackson Parish .....	1
Jefferson Parish.....	8
Lafayette Consolidated Government.....	4
Lafourche Parish .....	2
LaSalle Parish .....	1
Lincoln Parish .....	1
Livingston Parish.....	2
Madison Parish .....	1
Ouachita Parish.....	3
Plaquemines Parish.....	1
Pointe Coupee Parish .....	1
Rapides Parish.....	3
Red River Parish .....	1
Sabine Parish.....	1
St. Bernard Parish .....	2
St. Charles Parish.....	1
St. Helena Parish.....	1
St. James Parish.....	1
St. John The Baptist Parish .....	1
St. Landry Parish .....	2
St. Martin Parish .....	1
St. Mary Parish.....	1
Tangipahoa Parish.....	2
Terrebonne Parish Consolidated Government .....	2
Vermilion Parish .....	1
Vernon Parish.....	1
Washington Parish .....	1
Webster Parish .....	1
West Baton Rouge Parish.....	1
West Feliciana Parish .....	1
Winn Parish.....	1

Total 89

Maine

Androscoggin County .....	2
Aroostook County.....	2
Cumberland County .....	5
Hancock County.....	1
Kennebec County.....	3
Knox County.....	1
Lincoln County .....	1
Oxford County .....	1
Penobscot County .....	3
Piscataquis County .....	1
Sagadahoc County.....	1
Somerset County.....	1
Waldo County.....	1
Washington County .....	1
York County.....	4

Total 28

Maryland

Allegany County .....	2
Anne Arundel County.....	9
Baltimore County .....	14
Calvert County .....	2
Caroline County .....	1
Carroll County .....	3
Cecil County.....	2
Charles County.....	3
Dorchester County .....	1
Frederick County .....	4
Garrett County .....	1
Harford County.....	5
Howard County.....	5
Kent County .....	1
Montgomery County.....	17
Prince George’s County .....	15
Queen Anne’s County .....	1
Somerset County.....	1
St. Mary’s County .....	2
Talbot County .....	1
Washington County .....	3
Wicomico County .....	2
Worcester County.....	1

Total 96

Massachusetts

Barnstable County .....	1
Bristol County .....	1
Nantucket County.....	1
Norfolk County .....	1

Total 4

Michigan

Alger County.....	1
Allegan County.....	2
Antrim County .....	1
Bay County .....	2
Branch County .....	1
Calhoun County .....	3
Charlevoix County.....	1
Cheboygan County .....	1
Clare County .....	1
Clinton County .....	2
Crawford County .....	1
Delta County .....	1
Dickinson County .....	1
Emmet County .....	1
Gogebic County.....	1
Grand Traverse County.....	2
Houghton County .....	1
Huron County.....	1
Iosco County .....	1
Iron County .....	1
Isabella County .....	2
Jackson County.....	3
Kalamazoo County .....	5
Kent County .....	11
Lake County .....	1
Leelanau County .....	1
Lenawee County.....	2
Mackinac County .....	1
Macomb County.....	15
Manistee County .....	1
Marquette County .....	2
Midland County.....	2
Missaukee County.....	1
Muskegon County.....	3

Newaygo County.....	1
Oakland County .....	21
Ontonagon County .....	1
Osceola County.....	1
Oscoda County.....	1
Otsego County .....	1
Ottawa County .....	5
Roscommon County .....	1
Saginaw County .....	4
St. Clair County .....	3
Tuscola County.....	1
Washtenaw County.....	6
Wayne County .....	32
Wexford County .....	1

Total 155

Minnesota

Aitkin County.....	1
Anoka County.....	6
Becker County.....	1
Beltrami County .....	1
Benton County .....	1
Big Stone County.....	1
Blue Earth County .....	2
Brown County.....	1
Carlton County.....	1
Carver County .....	2
Cass County.....	1
Chippewa County .....	1
Chisago County .....	1
Clay County.....	1
Clearwater County.....	1
Cook County .....	1
Cottonwood County.....	1
Crow Wing County .....	2
Dakota County .....	7
Dodge County .....	1
Douglas County.....	1
Faribault County.....	1
Fillmore County .....	1
Freeborn County.....	1
Goodhue County .....	1
Grant County.....	1
Hennepin County .....	20
Houston County .....	1
Hubbard County.....	1
Isanti County.....	1
Itasca County.....	1
Jackson County.....	1
Kanabec County.....	1
Kandiyohi County .....	1
Kittson County .....	1
Koochiching County.....	1
Lac Qui Parle County .....	1
Lake County .....	1
Lake Of The Woods County.....	1
Le Sueur County.....	1
Lincoln County .....	1
Lyon County .....	1
Mahnomen County.....	1
Marshall County.....	1
Martin County .....	1
McLeod County .....	1
Meeker County.....	1
Mille Lacs County .....	1
Morrison County.....	1
Mower County .....	1
Murray County.....	1

Nicollet County.....	1
Nobles County .....	1
Norman County.....	1
Olmsted County .....	3
Otter Tail County.....	1
Pennington County.....	1
Pine County .....	1
Pipestone County.....	1
Polk County.....	1
Pope County .....	1
Ramsey County .....	9
Red Lake County .....	1
Redwood County .....	1
Renville County .....	1
Rice County.....	2
Rock County.....	1
Roseau County .....	1
Scott County .....	2
Sherburne County .....	2
Sibley County.....	1
St. Louis County .....	4
Stearns County .....	3
Steele County .....	1
Stevens County .....	1
Swift County.....	1
Todd County.....	1
Traverse County.....	1
Wabasha County.....	1
Wadena County.....	1
Waseca County .....	1
Washington County .....	4
Watonwan County .....	1
Wilkin County.....	1
Winona County.....	1
Wright County .....	2
Yellow Medicine County .....	1

Total 142

Mississippi

Alcorn County .....	1
Attala County.....	1
Benton County .....	1
Bolivar County.....	1
Calhoun County .....	1
Carroll County .....	1
Choctaw County.....	1
Claiborne County .....	1
Clarke County.....	1
Coahoma County .....	1
Covington County.....	1
DeSoto County .....	2
Forrest County.....	2
Franklin County .....	1
George County .....	1
Grenada County .....	1
Hancock County.....	1
Harrison County .....	4
Hinds County .....	5
Holmes County.....	1
Jackson County .....	3
Jasper County .....	1
Jefferson Davis County .....	1
Jones County .....	2
Kemper County .....	1
Lafayette County .....	1
Lauderdale County .....	2
Leake County .....	1
Leflore County.....	1

Lincoln County .....	1
Lowndes County.....	1
Madison County .....	2
Marion County .....	1
Marshall County .....	1
Monroe County .....	1
Montgomery County.....	1
Neshoba County .....	1
Newton County .....	1
Oktibbeha County .....	1
Pearl River County .....	1
Perry County .....	1
Pontotoc County.....	1
Quitman County .....	1
Rankin County.....	3
Scott County .....	1
Sharkey County.....	1
Simpson County.....	1
Smith County .....	1
Stone County .....	1
Tishomingo County.....	1
Tunica County .....	1
Union County .....	1
Warren County .....	1
Wayne County .....	1
Webster County.....	1
Wilkinson County .....	1
Yalobusha County .....	1
Yazoo County .....	1

Total 74

Missouri

Adair County .....	1
Andrew County.....	1
Atchison County.....	1
Audrain County .....	1
Barry County .....	1
Barton County.....	1
Bates County .....	1
Benton County .....	1
Bollinger County.....	1
Boone County .....	3
Buchanan County.....	2
Caldwell County .....	1
Callaway County.....	1
Camden County .....	1
Cape Girardeau County .....	2
Carroll County .....	1
Carter County.....	1
Cass County.....	2
Cedar County .....	1
Chariton County .....	1
Christian County.....	1
Cole County .....	2
Cooper County .....	1
Dallas County.....	1
DeKalb County .....	1
Dent County.....	1
Franklin County .....	2
Gentry County .....	1
Greene County .....	5
Grundy County .....	1
Henry County .....	1
Hickory County.....	1
Howard County.....	1
Howell County .....	1
Jackson County.....	12
Jasper County .....	2

Johnson County.....	1
Lafayette County .....	1
Lincoln County .....	1
Linn County.....	1
Livingston County.....	1
Macon County.....	1
Madison County .....	1
Marion County .....	1
Miller County.....	1
Moniteau County.....	1
Morgan County.....	1
Nodaway County .....	1
Ozark County.....	1
Perry County .....	1
Pettis County .....	1
Phelps County.....	1
Pike County.....	1
Polk County.....	1
Randolph County .....	1
Ray County.....	1
Reynolds County .....	1
Scotland County.....	1
Scott County .....	1
Shannon County .....	1
St. Clair County .....	1
St. Francois County .....	2
Stone County .....	1
Sullivan County .....	1
Taney County.....	1
Texas County .....	1
Vernon County.....	1
Warren County .....	1
Washington County .....	1
Wayne County .....	1

Total 94

Montana

Anaconda-Deer Lodge County.....	1
Beaverhead County.....	1
Big Horn County .....	1
Blaine County .....	1
Broadwater County.....	1
Butte-Silver Bow County.....	1
Carbon County .....	1
Carter County.....	1
Cascade County .....	2
Chouteau County .....	1
Custer County .....	1
Daniels County.....	1
Dawson County.....	1
Fallon County .....	1
Fergus County .....	1
Flathead County.....	2
Gallatin County .....	2
Garfield County .....	1
Glacier County .....	1
Golden Valley County.....	1
Granite County.....	1
Hill County .....	1
Jefferson County .....	1
Judith Basin County.....	1
Lake County.....	1
Lewis And Clark County .....	2
Liberty County.....	1
Lincoln County .....	1
Madison County .....	1
McCone County.....	1

Meagher County.....	1
Mineral County.....	1
Missoula County .....	2
Musselshell County .....	1
Park County .....	1
Petroleum County.....	1
Phillips County .....	1
Pondera County .....	1
Powder River County.....	1
Powell County .....	1
Prairie County .....	1
Ravalli County .....	1
Richland County.....	1
Roosevelt County .....	1
Rosebud County.....	1
Sanders County .....	1
Sheridan County .....	1
Stillwater County.....	1
Sweet Grass County .....	1
Teton County .....	1
Toole County .....	1
Treasure County .....	1
Valley County .....	1
Wheatland County.....	1
Wibaux County .....	1
Yellowstone County .....	3

Total 63

Nebraska

Adams County.....	1
Banner County .....	1
Boone County .....	1
Boyd County .....	1
Buffalo County .....	1
Burt County.....	1
Butler County .....	1
Cass County.....	1
Cedar County .....	1
Chase County.....	1
Cherry County .....	1
Cheyenne County .....	1
Clay County.....	1
Colfax County.....	1
Cuming County.....	1
Custer County .....	1
Dakota County .....	1
Dawes County .....	1
Dawson County .....	1
Deuel County .....	1
Dixon County.....	1
Dodge County .....	1
Douglas County.....	9
Fillmore County .....	1
Franklin County .....	1
Frontier County.....	1
Furnas County .....	1
Gage County .....	1
Garfield County .....	1
Gosper County .....	1
Greeley County.....	1
Hall County .....	1
Hamilton County .....	1
Hayes County .....	1
Hitchcock County .....	1
Holt County .....	1
Howard County.....	1
Jefferson County .....	1
Kearney County.....	1

Keith County .....	1
Kimball County.....	1
Knox County.....	1
Lancaster County .....	5
Lincoln County .....	1
Logan County .....	1
Madison County.....	1
Merrick County.....	1
Morrill County .....	1
Nance County .....	1
Nemaha County .....	1
Nuckolls County .....	1
Otoe County .....	1
Pawnee County .....	1
Perkins County.....	1
Phelps County.....	1
Red Willow County.....	1
Richardson County .....	1
Rock County.....	1
Saline County.....	1
Sarpy County .....	3
Saunders County.....	1
Seward County.....	1
Sherman County .....	1
Sioux County.....	1
Stanton County .....	1
Thayer County .....	1
Thomas County .....	1
Thurston County.....	1
Washington County .....	1
Wayne County .....	1
York County.....	1

Total 85

Nevada

Carson City .....	1
Churchill County.....	1
Clark County .....	22
Douglas County.....	1
Elko County.....	1
Esmeralda County.....	1
Eureka County.....	1
Humboldt County .....	1
Lander County.....	1
Lincoln County .....	1
Lyon County .....	1
Mineral County.....	1
Nye County .....	1
Pershing County .....	1
Storey County .....	1
White Pine County .....	1

Total 37

New Hampshire

Belknap County.....	1
Carroll County .....	1
Cheshire County.....	1
Coos County .....	1
Grafton County.....	1
Hillsborough County .....	1
Merrimack County.....	1
Rockingham County .....	1
Strafford County.....	1
Sullivan County .....	1

Total 10

New Jersey

Bergen County .....	16
---------------------	----

Cape May County .....	2
Cumberland County .....	3
Gloucester County.....	5
Hudson County .....	11
Somerset County.....	6
Sussex County .....	3

Total 46

New Mexico

Bernalillo County.....	12
Catron County.....	1
Chaves County .....	2
Cibola County .....	1
Colfax County.....	1
Curry County .....	1
De Baca County .....	1
Dona Ana County .....	4
Eddy County.....	1
Grant County.....	1
Guadalupe County .....	1
Harding County .....	1
Hidalgo County.....	1
Lea County.....	2
Lincoln County .....	1
Los Alamos County.....	1
Luna County.....	1
McKinley County .....	2
Mora County .....	1
Otero County.....	2
Quay County .....	1
Rio Arriba County .....	1
Roosevelt County .....	1
San Juan County .....	3
San Miguel County .....	1
Sandoval County.....	2
Santa Fe County.....	3
Sierra County .....	1
Socorro County .....	1
Taos County .....	1
Torrance County .....	1
Union County .....	1
Valencia County .....	2

Total 57

New York

Albany County.....	6
Allegany County .....	1
Cattaraugus County .....	2
Cayuga County.....	2
Clinton County .....	2
Dutchess County.....	5
Erie County .....	16
Essex County .....	1
Genesee County.....	2
Hamilton County .....	1
Herkimer County .....	2
Livingston County.....	2
Madison County .....	2
Monroe County .....	13
Niagara County .....	4
Onondaga County .....	8
Ontario County .....	2
Orange County .....	7
Orleans County .....	1
Oswego County .....	3
Otsego County .....	2
Putnam County .....	2
Rensselaer County .....	3

Rockland County .....	6
Saratoga County .....	4
Schoharie County.....	1
Seneca County.....	1
Steuben County .....	2
Suffolk County.....	25
Sullivan County .....	2
Tompkins County.....	2
Ulster County .....	4
Warren County .....	2
Washington County .....	2
Westchester County .....	16
Wyoming County .....	1
Yates County .....	1

Total 158

North Carolina

Alamance County.....	3
Alexander County .....	1
Alleghany County .....	1
Anson County.....	1
Ashe County.....	1
Avery County .....	1
Beaufort County .....	1
Bertie County .....	1
Bladen County .....	1
Brunswick County.....	2
Buncombe County.....	4
Burke County .....	2
Cabarrus County .....	3
Camden County .....	1
Carteret County.....	2
Caswell County.....	1
Catawba County.....	3
Chatham County .....	1
Cherokee County.....	1
Chowan County .....	1
Clay County.....	1
Cleveland County .....	2
Columbus County.....	1
Craven County.....	2
Cumberland County .....	6
Currituck County .....	1
Dare County.....	1
Davidson County .....	3
Davie County.....	1
Duplin County .....	1
Durham County.....	5
Edgecombe County .....	1
Forsyth County .....	6
Franklin County .....	1
Gaston County .....	4
Gates County .....	1
Graham County.....	1
Granville County.....	1
Greene County .....	1
Guilford County .....	8
Halifax County.....	1
Harnett County.....	2
Haywood County .....	1
Henderson County.....	2
Hertford County.....	1
Hoke County .....	1
Hyde County .....	1
Iredell County.....	3
Jackson County .....	1
Johnston County .....	3
Jones County .....	1



Lee County.....	1
Lenoir County.....	1
Lincoln County .....	2
Macon County.....	1
Madison County .....	1
Martin County .....	1
McDowell County .....	1
Mitchell County .....	1
Montgomery County .....	1
Moore County .....	2
Nash County .....	2
New Hanover County .....	3
Northampton County.....	1
Onslow County .....	3
Orange County .....	3
Pamlico County.....	1
Pasquotank County .....	1
Pender County .....	1
Perquimans County .....	1
Person County.....	1
Pitt County.....	3
Polk County.....	1
Randolph County .....	3
Richmond County.....	1
Robeson County.....	3
Rockingham County .....	2
Rowan County.....	3
Rutherford County .....	2
Sampson County.....	2
Scotland County.....	1
Stanly County.....	2
Stokes County.....	1
Surry County .....	2
Swain County .....	1
Transylvania County.....	1
Tyrrell County .....	1
Union County .....	3
Vance County.....	1
Wake County.....	11
Warren County .....	1
Washington County .....	1
Watauga County.....	1
Wayne County .....	3
Wilkes County .....	2
Wilson County .....	2
Yadkin County .....	1
Yancey County.....	1

Total 182

North Dakota

Adams County.....	1
Barnes County .....	1
Benson County.....	1
Billings County .....	1
Bottineau County .....	1
Bowman County.....	1
Burke County .....	1
Burleigh County.....	2
Cass County.....	3
Cavalier County.....	1
Dickey County .....	1
Divide County.....	1
Dunn County .....	1
Eddy County.....	1
Emmons County.....	1
Foster County.....	1
Golden Valley County.....	1
Grand Forks County.....	2

Grant County.....	1
Hettinger County .....	1
Kidder County .....	1
LaMoure County.....	1
Logan County.....	1
McHenry County.....	1
McIntosh County .....	1
McKenzie County.....	1
McLean County .....	1
Mercer County.....	1
Morton County .....	1
Mountrail County.....	1
Nelson County.....	1
Oliver County.....	1
Pembina County.....	1
Pierce County.....	1
Ramsey County .....	1
Renville County .....	1
Richland County.....	1
Rolette County .....	1
Sargent County .....	1
Sheridan County .....	1
Sioux County.....	1
Slope County .....	1
Stark County .....	1
Steele County .....	1
Stutsman County .....	1
Towner County.....	1
Traill County .....	1
Walsh County.....	1
Ward County .....	2
Wells County .....	1
Williams County .....	1

Total 56

Ohio

Allen County.....	2
Ashtabula County.....	2
Athens County.....	2
Auglaize County .....	1
Belmont County .....	2
Carroll County .....	1
Champaign County.....	1
Clermont County .....	4
Clinton County .....	1
Columbiana County.....	2
Crawford County .....	1
Cuyahoga County .....	22
Defiance County.....	1
Delaware County.....	2
Fairfield County .....	3
Fayette County .....	1
Franklin County .....	20
Fulton County.....	1
Gallia County .....	1
Hamilton County .....	14
Highland County.....	1
Holmes County.....	1
Jackson County .....	1
Jefferson County .....	2
Knox County.....	2
Lake County .....	4
Lawrence County.....	2
Licking County.....	3
Lorain County.....	6
Mahoning County .....	5
Marion County .....	2
Meigs County .....	1

Miami County.....	2
Monroe County .....	1
Montgomery County .....	9
Morrow County.....	1
Muskingum County.....	2
Ottawa County .....	1
Perry County .....	1
Pike County.....	1
Portage County .....	3
Preble County .....	1
Ross County.....	2
Sandusky County .....	2
Scioto County .....	2
Shelby County .....	1
Summit County .....	10
Trumbull County .....	4
Union County .....	1
Warren County .....	3
Williams County .....	1
Wood County .....	3
Wyandot County.....	1

Total 166

Oklahoma

Alfalfa County .....	1
Beaver County.....	1
Beckham County.....	1
Blaine County .....	1
Bryan County .....	1
Caddo County .....	1
Canadian County .....	2
Cleveland County .....	4
Coal County .....	1
Comanche County.....	3
Cotton County .....	1
Craig County .....	1
Creek County .....	2
Custer County .....	1
Delaware County .....	1
Grady County .....	1
Grant County.....	1
Greer County.....	1
Harmon County .....	1
Haskell County.....	1
Hughes County.....	1
Jackson County.....	1
Jefferson County .....	1
Johnston County .....	1
Kay County.....	1
Kiowa County .....	1
LeFlore County .....	1
Logan County.....	1
Love County .....	1
Major County .....	1
Marshall County.....	1
Mayes County .....	1
Muskogee County.....	2
Noble County .....	1
Nowata County.....	1
Oklahoma County.....	12
Osage County.....	1
Ottawa County .....	1
Pawnee County .....	1
Payne County .....	2
Pontotoc County.....	1
Pottawatomie County .....	2
Rogers County.....	2
Sequoyah County .....	1

NATIONAL ASSOCIATION <i>of</i> COUNTIES		COUNTY NEWS
Stephens County.....	1	Dauphin County .....5
Texas County.....	1	Delaware County.....10
Tillman County .....	1	Elk County.....1
Tulsa County .....	11	Erie County .....5
Washington County .....	1	Fayette County .....3
Washita County.....	1	Forest County.....1
Woods County.....	1	Franklin County .....3
Woodward County .....	1	Fulton County.....1

Total 84

Oregon

Baker County .....	1
Benton County .....	2
Clackamas County .....	7
Clatsop County .....	1
Columbia County.....	1
Coos County .....	2
Crook County .....	1
Curry County .....	1
Deschutes County .....	2
Douglas County.....	2
Gilliam County .....	1
Grant County.....	1
Harney County .....	1
Hood River County.....	1
Jackson County .....	4
Jefferson County .....	1
Josephine County.....	2
Klamath County .....	2
Lake County .....	1
Lane County.....	6
Lincoln County .....	1
Linn County.....	2
Malheur County.....	1
Marion County .....	6
Morrow County .....	1
Multnomah County.....	13
Polk County.....	2
Sherman County .....	1
Tillamook County.....	1
Umatilla County .....	2
Union County .....	1
Wallowa County .....	1
Wasco County .....	1
Washington County .....	8
Wheeler County.....	1
Yamhill County .....	2

Total 84

Pennsylvania

Adams County.....	2
Allegheny County .....	21
Armstrong County .....	2
Beaver County.....	3
Bedford County .....	1
Berks County .....	7
Blair County .....	3
Bradford County.....	2
Butler County .....	4
Cambria County .....	3
Cameron County .....	1
Carbon County .....	2
Centre County .....	3
Chester County .....	9
Clarion County .....	1
Clinton County .....	1
Columbia County.....	2
Crawford County .....	2

Total 197

South Carolina

Aiken County.....	3
Allendale County .....	1
Bamberg County .....	1
Barnwell County .....	1
Beaufort County .....	3
Berkeley County .....	3
Calhoun County .....	1
Charleston County.....	6
Chester County .....	1
Chesterfield County .....	1
Clarendon County .....	1
Colleton County.....	1
Darlington County .....	2
Edgefield County .....	1
Fairfield County.....	1
Florence County .....	3
Georgetown County .....	2
Greenville County .....	8
Greenwood County.....	2
Hampton County .....	1
Horry County .....	4
Jasper County .....	1
Kershaw County .....	1
Lancaster County .....	2
Laurens County.....	2
Lee County.....	1
Lexington County.....	4
Marion County .....	1

Marlboro County .....	1
McCormick County .....	1
Newberry County .....	1
Oconee County .....	2
Orangeburg County .....	2
Pickens County .....	2
Richland County .....	7
Saluda County .....	1
Spartanburg County .....	5
Sumter County .....	2
Union County .....	1
Williamsburg County .....	1
York County .....	3

Total 88

South Dakota

Aurora County .....	1
Beadle County .....	1
Bennett County .....	1
Bon Homme County .....	1
Brookings County .....	1
Brown County .....	1
Brule County .....	1
Buffalo County .....	1
Butte County .....	1
Campbell County .....	1
Charles Mix County .....	1
Clark County .....	1
Clay County .....	1
Codington County .....	1
Corson County .....	1
Custer County .....	1
Davison County .....	1
Day County .....	1
Deuel County .....	1
Dewey County .....	1
Douglas County .....	1
Edmunds County .....	1
Fall River County .....	1
Faulk County .....	1
Grant County .....	1
Gregory County .....	1
Haakon County .....	1
Hamlin County .....	1
Hand County .....	1
Hanson County .....	1
Harding County .....	1
Hughes County .....	1
Hutchinson County .....	1
Hyde County .....	1
Jackson County .....	1
Jerauld County .....	1
Jones County .....	1
Kingsbury County .....	1
Lake County .....	1
Lawrence County .....	1
Lincoln County .....	1
Lyman County .....	1
Marshall County .....	1
McCook County .....	1
McPherson County .....	1
Meade County .....	1
Mellette County .....	1
Miner County .....	1
Minnehaha County .....	3
Moody County .....	1
Oglala Lakota County .....	1
Pennington County .....	2

Perkins County .....	1
Potter County .....	1
Roberts County .....	1
Sanborn County .....	1
Spink County .....	1
Stanley County .....	1
Sully County .....	1
Todd County .....	1
Tripp County .....	1
Turner County .....	1
Union County .....	1
Walworth County .....	1
Yankton County .....	1
Ziebach County .....	1

Total 69

Tennessee

Anderson County .....	2
Bradley County .....	2
Campbell County .....	1
Chester County .....	1
Hamilton County .....	6
Hardin County .....	1
Henry County .....	1
Hickman County .....	1
Jefferson County .....	1
Knox County .....	8
Lauderdale County .....	1
Lincoln County .....	1
Marshall County .....	1
Metropolitan Government of Nashville and Davidson County .....	11
Montgomery County .....	3
Overton County .....	1
Rhea County .....	1
Roane County .....	1
Sevier County .....	2
Shelby County .....	16
Tipton County .....	1
Washington County .....	3
Weakley County .....	1
White County .....	1
Williamson County .....	3

Total 71

Texas

Andrews County .....	1
Austin County .....	1
Bandera County .....	1
Bell County .....	5
Bexar County .....	27
Borden County .....	1
Brazoria County .....	5
Brazos County .....	3
Brewster County .....	1
Caldwell County .....	1
Calhoun County .....	1
Carson County .....	1
Chambers County .....	1
Cochran County .....	1
Comal County .....	2
Comanche County .....	1
Cooke County .....	1
Crane County .....	1
Crockett County .....	1
Dallas County .....	40
Deaf Smith County .....	1

Denton County .....	7
Eastland County .....	1
El Paso County .....	14
Ellis County .....	2
Erath County .....	1
Fannin County .....	1
Fort Bend County .....	6
Freestone County .....	1
Gaines County .....	1
Garza County .....	1
Gillespie County .....	1
Glasscock County .....	1
Gonzales County .....	1
Grayson County .....	3
Gregg County .....	3
Grimes County .....	1
Hamilton County .....	1
Hartley County .....	1
Hays County .....	2
Hidalgo County .....	10
Hockley County .....	1
Hood County .....	1
Hopkins County .....	1
Houston County .....	1
Hutchinson County .....	1
Irion County .....	1
Jack County .....	1
Jackson County .....	1
Jasper County .....	1
Jefferson County .....	5
Jim Wells County .....	1
Kenedy County .....	1
Kimble County .....	1
Kleberg County .....	1
Lampasas County .....	1
Lavaca County .....	1
Leon County .....	1
Lipscomb County .....	1
Live Oak County .....	1
Marion County .....	1
McLennan County .....	4
McMullen County .....	1
Midland County .....	3
Montague County .....	1
Moore County .....	1
Morris County .....	1
Navarro County .....	1
Nueces County .....	6
Ochiltree County .....	1
Oldham County .....	1
Palo Pinto County .....	1
Polk County .....	1
Presidio County .....	1
Rains County .....	1
Real County .....	1
Robertson County .....	1
Rockwall County .....	1
Runnels County .....	1
San Augustine County .....	1
Scurry County .....	1
Shackelford County .....	1
Smith County .....	4
Starr County .....	2
Sterling County .....	1
Tarrant County .....	27
Terry County .....	1
Throckmorton County .....	1
Travis County .....	15

Tyler County .....	1
Upshur County .....	1
Victoria County .....	2
Washington County .....	1
Wharton County .....	1
Willacy County .....	1
Williamson County .....	4
Wilson County .....	1
Wise County .....	1
Yoakum County .....	1
Young County .....	1

Total 277

Utah

Beaver County .....	1
Box Elder County .....	1
Cache County .....	2
Carbon County .....	1
Daggett County .....	1
Davis County .....	5
Duchesne County .....	1
Emery County .....	1
Garfield County .....	1
Grand County .....	1
Iron County .....	1
Juab County .....	1
Kane County .....	1
Millard County .....	1
Morgan County .....	1
Piute County .....	1
Rich County .....	1
Salt Lake County .....	18
San Juan County .....	1
Sanpete County .....	1
Sevier County .....	1
Summit County .....	1
Tooele County .....	1
Uintah County .....	1
Utah County .....	7
Wasatch County .....	1
Washington County .....	2
Wayne County .....	1
Weber County .....	4

Total 61

Virginia

Accomack County .....	1
Albemarle County .....	2
Alleghany County .....	1
Amelia County .....	1
Amherst County .....	1
Arlington County .....	4
Augusta County .....	2
Bath County .....	1
Bland County .....	1
Botetourt County .....	1
Brunswick County .....	1
Buchanan County .....	1
Buckingham County .....	1
Campbell County .....	1
Caroline County .....	1
Charles City County .....	1
Charlotte County .....	1
Chesterfield County .....	5
Clarke County .....	1
Craig County .....	1
Culpeper County .....	1
Cumberland County .....	1

Dickenson County .....	1
Dinwiddie County .....	1
Essex County .....	1
Fairfax County .....	19
Fauquier County .....	2
Floyd County .....	1
Fluvanna County .....	1
Franklin County .....	1
Frederick County .....	2
Giles County .....	1
Gloucester County .....	1
Grayson County .....	1
Greene County .....	1
Greensville County .....	1
Hanover County .....	2
Henrico County .....	6
Henry County .....	1
Highland County .....	1
Isle of Wight County .....	1
James City County .....	1
King And Queen County .....	1
King George County .....	1
Lancaster County .....	1
Lee County .....	1
Loudoun County .....	3
Louisa County .....	1
Madison County .....	1
Mathews County .....	1
Mecklenburg County .....	1
Montgomery County .....	2
Nelson County .....	1
New Kent County .....	1
Northampton County .....	1
Northumberland County .....	1
Nottoway County .....	1
Orange County .....	1
Page County .....	1
Patrick County .....	1
Pittsylvania County .....	2
Powhatan County .....	1
Prince Edward County .....	1
Prince George County .....	1
Prince William County .....	5
Pulaski County .....	1
Rappahannock County .....	1
Richmond County .....	1
Roanoke County .....	2
Rockbridge County .....	1
Rockingham County .....	2
Russell County .....	1
Scott County .....	1
Shenandoah County .....	1
Southampton County .....	1
Spotsylvania County .....	2
Stafford County .....	2
Sussex County .....	1
Warren County .....	1
Washington County .....	1
Westmoreland County .....	1
Wise County .....	1
Wythe County .....	1
York County .....	2

Total 132

Washington

Asotin County .....	1
Benton County .....	3
Chelan County .....	2



Clallam County.....	2
Clark County .....	7
Columbia County.....	1
Cowlitz County .....	2
Douglas County.....	1
Ferry County.....	1
Franklin County .....	1
Garfield County .....	1
Grant County.....	2
Grays Harbor County .....	2
Island County.....	2
Jefferson County .....	1
King County .....	33
Kitsap County .....	5
Kittitas County .....	1
Klickitat County.....	1
Lewis County.....	2
Lincoln County .....	1
Okanogan County.....	1
Pacific County .....	1
Pend Oreille County.....	1
Pierce County.....	14
San Juan County .....	1
Skagit County.....	2
Skamania County.....	1

Snohomish County.....	11
Spokane County.....	8
Stevens County .....	1
Thurston County.....	4
Wahkiakum County .....	1
Walla Walla County.....	1
Whatcom County.....	4
Whitman County .....	1
Yakima County .....	5

Total 129

West Virginia

Barbour County.....	1
Berkeley County .....	2
Boone County .....	1
Braxton County .....	1
Brooke County .....	1
Cabell County .....	2
Calhoun County .....	1
Clay County.....	1
Doddridge County .....	1
Fayette County .....	1
Gilmer County .....	1
Grant County.....	1
Greenbrier County .....	1

Hampshire County.....	1
Hancock County.....	1
Hardy County .....	1
Harrison County .....	2
Jackson County .....	1
Kanawha County .....	4
Lewis County.....	1
Logan County .....	1
Marion County .....	1
Marshall County.....	1
Mason County.....	1
McDowell County .....	1
Mercer County.....	2
Mineral County.....	1
Mingo County.....	1
Monongalia County .....	2
Morgan County.....	1
Nicholas County.....	1
Ohio County .....	1
Pendleton County.....	1
Pleasants County .....	1
Pocahontas County .....	1
Preston County .....	1
Putnam County .....	1
Raleigh County.....	2

Randolph County .....	1
Ritchie County.....	1
Roane County .....	1
Summers County.....	1
Taylor County .....	1
Tucker County.....	1
Tyler County .....	1
Upshur County .....	1
Wayne County .....	1
Webster County.....	1
Wetzel County .....	1
Wirt County.....	1
Wood County .....	2
Wyoming County .....	1

Total 62

Wisconsin

Adams County.....	1
Ashland County.....	1
Barron County.....	1
Bayfield County .....	1
Brown County.....	5
Burnett County .....	1
Calumet County .....	1
Chippewa County .....	2
Clark County .....	1
Columbia County.....	1
Dane County .....	9
Dodge County .....	2
Door County.....	1
Douglas County.....	1
Dunn County .....	1
Eau Claire County.....	2
Florence County .....	1
Fond du Lac County.....	2
Forest County.....	1
Grant County.....	1
Green County.....	1
Jackson County .....	1
Jefferson County .....	2
Juneau County .....	1
Kenosha County.....	3
Kewaunee County .....	1
La Crosse County .....	2
Lafayette County .....	1
Langlade County .....	1
Lincoln County .....	1
Marathon County .....	3
Marinette County .....	1
Marquette County .....	1
Oconto County .....	1
Oneida County .....	1
Outagamie County .....	3
Ozaukee County .....	2
Pierce County.....	1
Polk County.....	1
Portage County .....	2
Price County.....	1
Racine County.....	4
Richland County.....	1
Rock County.....	3
Rusk County.....	1
Sauk County .....	2
Sawyer County .....	1
Shawano County .....	1
Sheboygan County .....	2
St. Croix County.....	2
Taylor County .....	1

Trempealeau County.....	1
Vernon County.....	1
Vilas County.....	1
Washburn County.....	1
Washington County .....	3
Waukesha County .....	7
Waupaca County.....	1
Waushara County .....	1
Winnebago County.....	3
Wood County .....	2

Total 106

Wyoming

Albany County.....	1
Big Horn County .....	1
Campbell County.....	1
Carbon County .....	1
Converse County .....	1
Crook County .....	1
Fremont County.....	1
Goshen County .....	1
Hot Springs County.....	1
Johnson County.....	1
Laramie County.....	2
Lincoln County .....	1
Natrona County.....	2
Niobrara County .....	1
Park County .....	1
Platte County .....	1
Sheridan County .....	1
Sublette County .....	1
Sweetwater County.....	1
Teton County .....	1
Uinta County .....	1
Washakie County .....	1
Weston County.....	1

Total 25

Total Member

County Votes 5,059

2020 ASPIRE AWARD:  
Honoring Innovative Leadership  
in Promoting County Employee  
Retirement Savings



For more details on the 2020 Aspire Awards, please log onto [www.naco.org/aspire](http://www.naco.org/aspire).

If you have any questions, please contact Carlos Greene at 770.881.0100 or [cgreene@naco.org](mailto:cgreene@naco.org)



# Counties turn to apps, alert systems in pandemic

by Rachel Looker  
staff writer

When combating the impacts of a global pandemic in the 21st century, counties are turning to innovative tech to provide accurate information to county residents.

“With the ability to use apps — the sky’s the limit,” according to Rich Collins, director of Emergency Services for Sarasota County, Fla.

Officials in Sarasota County launched a notification system and are using mobile applications to efficiently spread information during the COVID-19 outbreak.

The notification system, Alert Sarasota County, was launched in partnership with four cities and is a product of Everbridge, a telephone notification service that has a contract with the state of Florida. Emergency Management Chief Ed McCrane said this is an additional benefit for the county because the state is funding the system.

Residents can visit AlertSarasotaCounty.com and enroll to receive phone calls, text messages or emails.

During the COVID-19 pandemic, McCrane said the county uses the system to send out daily flash reports which includes information on the number of COVID-19 cases, location of positive cases, graphs tracking the trend of the virus’s spread and other data.

“We find the more information you can provide especially to your response partners, the better situational awareness everybody has,” McCrane said.

The county is using additional features of the system for in-house notifications to staff, according to McCrane. When the emergency operations center is activated, employees will receive a notification about their role and need to report.

“We’re using it mostly internally and we can use it to reach out to the community with community-wide messaging if something were to occur or we need to get information out,” he said.

After reviewing procedures following Hurricane Irma in 2017, Collins said the county reviewed ways to move infor-



Orange County (N.Y.) Health Commissioner Irina Gelman and County Executive Steve Neuhaus view data from the health department’s mobile app that provides county residents with information related to COVID-19. Photo courtesy Orange County

mation more efficiently and obtain an accurate operating picture during crisis situations.

The county built these applications utilizing Smartsheet (which is similar to Microsoft Excel) and AppSheet, a no-code development platform, to quickly spread information. The county contracted with both companies to use the platforms and internal teams have created the databases.

“The great thing about it is it’s being done by the people who are in the role, so we can meet with public works and talk

about what their issues are and develop what we’re collecting based on what they feel is most important,” Collins said.

Through the coronavirus pandemic, the county is using these applications to track resource hospitals, numbers of COVID-19 patients, the percentage of beds available in the ICU and how many rooms are in isolation. The databases also track how the shutdown is affecting the ability to feed vulnerable populations and how many people in different ZIP codes have applied for unem-

ployment.

“We’re tracking what our costs are, all of our resource requests, everything is being done on the fly in these types of Smartsheets,” Collins said. “I feel like on any given moment I can look and see what’s going on and get a good picture of how our communities are doing.”

The databases are cloud-based with backups if there is a loss of power or internet, Collins said.

“I think that use of that technology provides information

at your fingertips for anybody and with the more information we put out, the less questions we get back because everybody is on the same page,” McCrane said.

In Orange County, N.Y. the health department recently introduced a free mobile app that provides information related to COVID-19.

Orange County Health Commissioner Irina Gelman created the app and said the county had been working on establishing a mobile application prior to the pandemic.

“The notion was to have one app that would be the real time navigation tool and really a one-stop shop for all resources from the county,” Gelman said.

ThePublicHealthApp.com, which customizes apps for state and local governments, created the app for the county. County residents are able to download it from Google Play and the Apple store.

Users can find up-to-date information, mapping and other resources in the app. The county can send notifications through a push notification component, bringing crucial information to the screens of county residents.

See APPS page 19

WORD SEARCH

SALINE COUNTY, Kansas

Created by: Mary Ann Barton

U	Q	B	Z	R	T	P	O	K	A	A	S	A	A	D	Y	U	H	V	Q
R	D	K	B	J	A	P	R	O	G	V	E	G	A	J	F	G	A	N	O
A	K	T	C	D	E	A	B	A	A	S	G	K	W	C	S	V	U	C	Y
Y	F	R	Y	R	H	R	S	C	Y	E	E	H	A	V	I	A	T	O	R
R	W	Y	N	L	W	M	E	L	Q	F	L	T	G	N	U	C	J	O	K
Y	Q	S	F	S	A	P	Q	P	U	A	L	E	L	Q	U	O	C	D	R
T	Q	R	T	Q	R	P	C	N	A	K	O	J	E	Q	O	U	X	X	M
A	N	I	L	A	S	L	L	Y	N	P	C	A	R	Q	P	R	A	Y	E
E	X	X	Y	H	H	R	R	I	J	E	S	D	G	G	V	T	J	E	W
C	F	S	E	V	A	D	N	L	E	H	A	W	U	Z	Z	H	X	A	F
P	F	Z	B	G	R	A	M	B	Y	S	Y	B	E	S	E	O	Z	W	O
Z	R	U	Z	E	V	B	Z	V	T	B	X	H	E	N	Q	U	K	I	M
Y	Y	X	V	Q	E	T	D	R	R	I	U	T	O	G	O	S	W	U	S
E	L	M	R	H	Y	M	O	H	P	E	X	R	N	N	O	E	S	U	H
Z	O	O	R	K	L	N	X	J	G	P	V	I	G	U	D	E	X	C	F
C	Q	Y	H	P	A	R	G	O	E	G	D	I	I	E	U	K	G	X	L
T	N	S	O	U	X	L	U	W	Q	N	S	T	R	M	R	U	M	O	O
X	W	L	T	C	S	J	I	I	U	S	N	R	J	Y	I	S	B	X	L
Q	Z	A	J	D	X	D	W	O	I	I	B	T	B	N	Q	V	R	E	H
D	K	N	B	T	W	J	F	W	K	Z	Y	T	C	Y	J	X	V	Q	V

**ASTRONAUT:** Former NASA astronaut Steve Hawley is from the county. He flew on five Space Shuttle flights.

**AVIATOR:** Aviator pioneer Glenn Martin is from the county; a company he founded in 1912 later became Lockheed Martin.

**BURGERS:** If you’re ever passing through, be sure to try a “cozy burger” slider for 89 cents at The Cozy Inn, established in 1922.

**COLLEGES:** The county is home to Kansas State Polytechnic, Kansas Wesleyan University and Salina Area Tech College.

**COURTHOUSE:** The “old” courthouse, built in the Classical Revival style in 1910, now serves as a senior center. The newer courthouse, built in the 1970s, is located across the street.

**DRY:** Saline County was a “dry” county until 1986.

**FOUNDING:** The county was founded Feb. 15, 1860.

**GEOGRAPHY:** The county is 720 square miles with a population of 77 people per square mile.

**HARVEY:** Radio broadcaster Paul Harvey, whose famous saying was “And now you know...the rest of the story,” got his start in radio at KFBI-AM in the county; the station, now KFDI, later moved to Wichita.

**MUSEUM:** The Smoky Hill Museum is one of only 12 in the state that is nationally accredited.

**NEWSPAPER:** The *Salina Journal*, founded in 1871, is a daily newspaper covering the county.

**RIVER:** The county was named for the 397-mile long Saline River, which runs through the county.

**SALINA:** The county seat is the city of Salina.

**WHEAT:** The county is home to one of the world’s largest wheat-producing areas.

**ZOO:** The Rolling Hills Zoo located in the county, a member of the Association of Zoos and Aquariums, houses over 100 species of animals.



# Help take the lead at NACo!

by Hon. Gary Moore

Our upcoming year at NACo is shaping up to be one of our most challenging. These are unprecedented times and strong leadership will be essential in guiding our county organization now more than ever. I also understand that your commitments in your home county will be more demanding. With these things in mind, I ask for you to strongly consider submitting your name for a leadership position at NACo. Thank you and stay healthy. These appointments are for:

- Policy Steering Committee chairs and vice chairs and subcommittee chairs and vice chairs
- Large Urban County Caucus and Rural Action Caucus chairs, vice chairs and members
- Standing Committee chairs,

vice chairs and members

- Ad Hoc Committee, Task Force and Advisory Board chairs, vice chairs and members
- At-Large NACo Board of Directors



Gary Moore

Below is more information for each committee and its specific appointment terms. Committee leaders and members must cover their own travel and conference expenses.

## Important:

Steering committee membership is not a part of this application process. State associations of counties are responsible for nominating general policy steering committee members. The online nomination form for policy steering committee membership can be found at [www.naco.org/nomination](http://www.naco.org/nomination).

To become a member of a steering committee you must fill out the nomination form and submit it to your state associa-

tion. They will submit the nomination to NACo.

To be considered for a presidential appointment to any of the following committees or as an At-Large Director for the NACo Board of Directors, you must complete the application online **before June 14**.

The 10 policy steering committees will each have a leadership team consisting of a chair, an appropriate number of vice chairs and subcommittee chairs and vice chairs. Those applicants who have been active members of the steering committee will be given preference in consideration for these appointments. The applicant should be willing to help coordinate leadership conference calls, develop meeting agendas and testify before Congress, if necessary. These appointments are for one year.

## RAC and LUCC

The Rural Action Caucus and the Large Urban County Caucus will each have a chair, an ap-

propriate number of vice chairs and members. Applicants who have been active members of these caucuses will be given preference in consideration for these appointments. These appointments are for one year.

## At-large appointments

Each president appoints 10 at-large directors to the NACo Board of Directors for a one-year term. These appointments are to add balance to the board with respect to any inequities between urban and rural, gender, geography and minority representation. As with our communities, our strength is in our diversity. These appointments are for one year.

## Standing committees

The Standing Committees take direction from and report directly to the NACo Officers.

- **Information Technology:** Advises the Executive Committee on information technology issues and provides oversight on NACo information technolo-

gy projects. (Appoints the chair, vice chairs and members for a one-year term.)

- **Programs and Services:** Advises the Executive Committee regarding the development and evaluation of programs and services for NACo members. (Appoints the chair, vice chairs and members for a one-year term.)

- **Membership:** Actively recruits and retains member counties, parishes and boroughs to increase NACo's total membership. (Appoints the chair, vice chairs and members for a one-year term.)

## Ad hoc committees

The Ad Hoc committees are as follows:

- **Arts and Culture Commission:** Demonstrates how the arts can be used by county officials to promote economic development and provide solutions to many of the challenges that they face, through work-

See **COMMITTEES** page 19

**STANDARDS CONNECT**

**The answer for all of your standards needs**

A digital standards management solution that simplifies searching, collaborating, and accessing standards for your entire organization

**ANSI**

TO LEARN MORE, VISIT [WEBSTORE.ANSI.ORG](http://WEBSTORE.ANSI.ORG)

From COMMITTEES page 18

shop sessions, field trips, special publications and its annual Arts & Culture awards, which recognize counties working to foster an environment where arts can thrive to create more livable communities. (Appoints the chair, vice-chair and members for a one-year term.)

• **Geospatial Information Systems Subcommittee:** (Appoints the chair, vice-chair and members for a one-year term.)

• **Resilient Counties Advisory Board:** Provides information, guidance and support to the NACo Resilient Counties Initiative. (Appoints the chair, vice-chairs and members for a one-year term.)

• **Healthy Counties Advisory Board:** Provides information, guidance and support to the NACo Healthy Counties Initia-

tive. (Appoints the chair, vice-chairs and members for a one-year term.)

• **Immigration Reform Task Force:** Educates Congress, the administration and NACo members on the impact of immigration on counties and helps advocate for NACo's priorities. (Appoints chair, vice chairs and members for a one-year term.)

• **International Economic Development Task Force:** Provides information, guidance and support for international economic development activities. (Appoints the chair, vice-chairs and members for a one-year term.)


• **Veterans and Military Services Committee:** Engage NACo and its members to develop and highlight county best practices and policies to promote innovative programs, services and benefits for our nation's military,

veterans and their families. (Appoints the chair, vice chairs and members for a one-year term.)

The presidential appointments application form must be completed by everyone who wants to be considered for a leadership or committee appointment on a steering, standing or ad hoc committee for the 2020-2021 presidential year.

The application form is available online: [www.NACo.org/presidential-appointments](http://www.NACo.org/presidential-appointments).

The deadline for submitting your application is June 14. Thank you, in advance, for your interest in serving, and I look forward to receiving your application.

Please direct any questions to [committee@naco.org](mailto:committee@naco.org). 

*Boone County, Ky. Judge/Executive Gary Moore is NACo first vice president.*

# Apps help counties inform during pandemic

From APPS page 17

"Technology can really be that conduit and help facilitate a lot of the education, outreach, informational component and it really unveils itself to that immediate notification anytime we need to reach out to the public at large," Gelman said.


The app also provides information from other departments within the county such as the Office for the Aging or

daily addresses from the county executive's office.

Gelman added that the county is looking at other possibilities to enhance the app such as adding a telehealth platform.

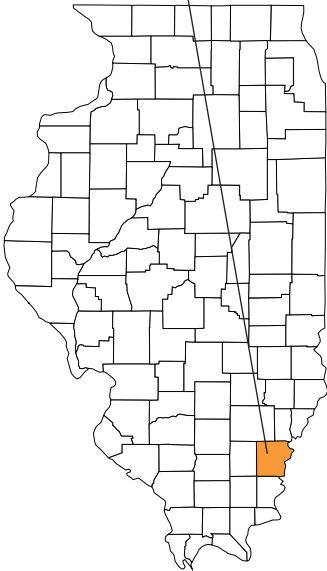
"The great feature of this particular app is that it's quite versatile and we can easily adapt it to our needs," Gelman said. "Hopefully once the COVID-19 crisis is behind us, we can always adapt it for broader appli-

cations throughout the county."

Other counties have implemented similar mobile applications including Los Angeles County's "Stop Price Gouging" app; Burlington County, N.J.'s free COVID-19 and Social Services Resources app and Sonoma County, Calif.'s COVID-19 Check app, where county employees complete a 30-second daily screening for COVID-19-related symptoms. 

## GET TO KNOW...

### White County, Ill.



#### Welcome, White County, Ill.

White County, located in southeast Illinois, was formed from neighboring Gallatin County in 1815 after settlers organized establishments in the early 1800s along the Little Wabash River, which borders the eastern side of the county. The county is named for Captain Leonard White, a Gallatin County legislator.

The county's population is nearly 14,000 and the county seat of Carmi has a population of 6,500.

When oil was discovered near the Little Wabash River, Carmi's population doubled in two years. The county's main industry was agriculture prior to the discovery of oil.

When the federal government initiated the Interstate Highway System, Interstate 64 became the major travel route that cut through the county. This brought more businesses as well as oil and agriculture industries. Currently, auto parts manufacturing, plastics, a convenience store distribution center and underground coal mining are popular industries within the county.

## PROFILES IN SERVICE

### JIM HART

**Board Member**  
Commissioner  
Madison County, Mont.



Hart

**Number of years involved in NACo:** Four

**Years in public service:** 13 ½ unless I add 30 years as a teacher

**Occupation:** County commissioner

**Education:** Bachelor of Science, Secondary Education, double major in English and Business (Accounting)

**The hardest thing I've ever done:** ... and best! Single parent to my wonderful, now adult daughter Caitlin.

**A dream I have is to:** Travel throughout the United States, following only state and federal highways, not interstates.

**You'd be surprised to learn that:** I am the 10th of 13 children and was born on our oldest brother's birthday, 14 years apart — amazing! Patrick James and James Patrick — yes, I asked if they were just running out of name options.

**The most adventurous thing I've ever done is:** Hitchhike 250 miles each way, depending on the route, for two and a half years until I bought my very first car during my junior year of college (thank goodness that I had friends).

**My favorite way to relax is:** Have a beer in one hand and a cigar in the other while listening to stories with friends.

**I'm most proud of:** All of my family, with Caitlin as #1.

**Every morning I read:** At least two of our southwest Montana newspapers.

**My favorite meal is:** A traditional Thanksgiving dinner with all the trimmings.

**My pet peeve is:** Overused words like "as well" (just use and, also, too) and "I'd like to introduce, to thank, to accept..." It sort of makes me think, "I'd like to... but I'm not going to."

**My motto is:** Sign up, get in the ballgame or keep your trap shut!

**The last book I read was:** Colin Powell's *It Worked for Me: In Life and Leadership*

**My favorite movie is:** *It's a Wonderful Life*

**My favorite music is:** Old country and jazz

**My favorite U.S. president is:** Abraham Lincoln

**My county is a NACo member because:** Forgive my being cliché... We need to be, because counties matter!

### Three people (living or dead) I'd invite to dinner:

Albert Einstein, Thomas Paine and Abraham Lincoln (I'd just listen, because each is way out of my league).





## the HR DOCTOR

with Philpot & Winkeler

As people crave their old routines and wonder when things will be “back to normal,” we all know that whatever was normal before no longer exists, or at least is not likely to return anytime soon. Yet, even as we, as county government officials, continue to respond to the ever-changing impacts of the pandemic, human resource offices have understood that there is plenty of “normal” still going on. On top of everything else, supervisors must grapple with the difficult tasks of employee discipline and termination.

There is a critical need right now for coaching employees who are struggling with their work, whether that’s due to the transition to working from home, the anxiety that comes from having to juggle full-time work with full-time childcare, or any number of issues, whether associated with the pandemic or not. As we all know, however, in certain cases, supervisors must take the next steps to demonstrate just how serious an employee’s ongoing insufficient performance or problematic behavior is, or to start creating the record that will support an eventual termination. Because you can’t wait on these issues until work life goes back to normal, employers must find a way to have these all too familiar discussions in a new, less familiar world.

At the very least, all these other virtual meetings and one-on-one discussions we have been having over the last 10 weeks are preparing us to have difficult conversations in much the same manner. Given the serious nature of conversations imposing discipline, video-enabled calls, with all parties having their videos actually on, are the best technological option.

As with in-person conversations, you want your tone to be clear with little room for misinterpretation. You also want to

# Using Virtual Tools for Those Serious Work Conversations

be able to gauge your employee’s reaction. Some employees receive this kind of information with little response and you need to know that they are still present and listening. You do not want to have to frequently ask for reassurance that they are still there on the phone. The following are some additional suggestions for issuing a disciplinary document virtually:

- Schedule a time for the meeting to take place virtually, and make sure everyone has the link. Let the employee know you will be checking in to discuss performance and give feedback.
- Let the employee know the specific reason for the meeting and that you will be sending them a document to review.
- Once the conversation has started, email the employee the document you will be reviewing. After sending the email, wait for the document to be received and confirm the employee is able to open the document. Ask them to confirm receipt of the document by replying to the email. It works best to send the document rather than sharing the document on the presenter’s screen. This

allows the person receiving the document to scroll to the end and skim the document, which can lower anxiety. Otherwise, the employee is likely to be so focused wondering what the bottom line is that they are unable to listen or take part in the discussion.

- Review and discuss the document.
- Give the staff person a chance to share their thoughts.
- Have them sign and return the document. This can work best if the document is a fillable pdf, so they don’t have to print and scan. If none of these options are available, you may rely on their email confirming receipt of the document.
- Remind them that they are a valuable team member and you are confident they can make the necessary performance changes to bring their performance up to the required expectations.

It is also important to take the experiences you have had since beginning working from home to prepare you to avoid the pitfalls of virtual communication. Make sure the most important material that you are trying to convey is in the doc-

ument. Even if your telecommunication technology has been performing well for you, freezes and skips in the audio are always possible. You do not want essential information being missed because you only addressed it verbally and it was interrupted by a brief technological malfunction. If you don’t already have a practice of having a human resources representative present for these conversations, make that change now. In addition to acting as a witness to the conversation, if you get disconnected from the call, they can keep the discussion moving until you are able to reconnect.

While these tips could also be used in a termination or separation, there are additional pieces to consider that make an in-person conversation the better choice, if at all possible. The employee has county equipment, a computer, keys or access card, purchasing card, etc., all of which you need turned in. Meeting in person to issue a dismissal will also allow the employee the opportunity to retrieve any personal items from their workspace immediately, rather than having to

schedule it for another time, drawing out the uncomfortable experience. If the employee asks why you need them to meet with you when they have been telecommuting for weeks, be honest, and let them know you need to discuss their performance.

These conversations are never comfortable, and our collective situation now doesn’t help the communication and discussion that accompany an honest, yet serious and difficult feedback conversation. As with coaching, it is important to take whatever steps you can to keep the communication clear and concise. Know that these conversations are tough for employees to hear. But we cannot avoid them, and we must keep in mind, as well, serving citizens with outstanding public service requires all employees to perform. **CN**

*From Coconino County, Ariz., HR gurus and contributors, Erika Philpot, human resources director and Rose Winkeler, deputy county attorney, address common and critical HR questions from their “boots on the ground” perspective.*





## BRIGHT IDEAS | ORANGE COUNTY, Calif.

# Pop-up Libraries Find New Ways to Promote Services, Improve Outreach

### PROBLEM:

Many individuals are unaware of the variety of services public libraries offer.

### SOLUTION:

Bring pop-up library booths to different community events to promote library programming.

by Rachel Looker  
staff writer

When looking to find new ways to promote library services to the public, staff from Orange County, Calif. Public Libraries knew they would need to go beyond the typical promotional items to bring awareness of what libraries can offer to the community.

Regional Services Manager Matthew Patsel and his team launched the Pop-Up Libraries Program in 2018 to raise public awareness of the services that are available at Orange County libraries.

The pop-up libraries bring library programming and services such as remote library card signup, online music streaming platforms and e-books into the community by setting up mobile booths at events to provide information about the resources libraries can offer.

At each event, a member of an outreach committee, which consists of 15 library staff members, sign up to volunteer and facilitate at each location.

The volunteer staff members visit a variety of community events at locations where libraries typically do not have a presence. Events include pet expos, job fairs, music festivals, comic-cons, nature events and holiday celebrations where library staff issue library cards, demonstrate online library databases and promote branch programming.

At each location, volunteers set up tables, hotspots, laptops, promotional materials and



Members of the outreach team display comic books at one of the pop-up library locations at Comic Orange in 2018 in Orange County, Calif. Photo courtesy Orange County Public Libraries

hands-on activities to promote library services to both regular library patrons and non-library users who are able to learn about the library's offerings if they haven't recently visited a branch.

Orange County's public library system, which includes 33 branches, offers residents a variety of services including music streaming, e-books, job searching resources, free Wi-Fi and free lunches for children during the summer.

Patsel said prior to the pop-up libraries, promotions involved internal flyers and social media posts that targeted those who already followed the library's activities.

"We were trying to find people who didn't know about some of the services we offered," he said. "We wanted to let them know that we still offer traditional library services, but then there's a whole bunch of new things that they maybe weren't aware of."

In 2018, Orange County Public Libraries saw a 6 percent increase in circulation, a 12 percent increase in library cards

issued and a 12 percent increase in program attendance, according to Patsel. In the last two years, the outreach team attended 70 events, reached over 10,000 visitors and issued 600 library cards.

"We've had reports that people have heard about this from this event and then came to the branch so that's the more one-on-one experience we've had," he said.

County Librarian Julie Quillman said word spread about events happening at the library because of the pop-up locations.

"It has really turned out to be one of our biggest pushes and one of our great ways to do outreach in the community," she said.

The library system focuses on attending county-sponsored events, city-sponsored events and privately sponsored happenings throughout Orange County.

Patsel said it was easy to connect with individuals for county or city events because of already formed partnerships. For private events, he emailed

organizations and asked if a library booth could be set up at their event at no cost because they were a county agency providing a public service.

"All the ones I contacted were really welcoming and said, 'Yeah, sure,'" he said. "They basically gave us a boost and then once we got that secured, we put together the promotional materials we wanted to target to those events."

The county attended a variety of events including the Doheny Blues Festival where they promoted online music streaming platforms, the South County Pet Expo where they highlighted books related to pet adoption and training, the Orange County Parks Summer Concert Series and even the County of Orange Career Expo and Open House.

At Wondercon, an annual comic con event, the team set up a pop-up booth and offered online downloads of comic books.

Patsel said the pop-ups are a convenient way to get the word out about a variety of services.

"It was just 'What services do

we have to offer?' and 'What places can we offer those at?' and then how we could market it at those events," Patsel said.

He added that the pop-up libraries program has strengthened partnerships with other county departments through cross-promotional events.

"By just building that partnership and starting that dialogue, it's led to a mutually beneficial impact for both agencies to help the public," he said.

Quillman said she has been amazed by these connections with other county agencies that strengthened and increased the library system's reach.

"While our aim was to reach more patrons, we realized that we also made so many more connections that have been really valuable and really extended our reach in our community," she said. **CN**

*Orange County's Pop-Up Libraries program is the recipient of a 2019 NACo Achievement Award in the Civic Education and Public Information category.*



# NEWS FROM ACROSS THE NATION

## CALIFORNIA

• A safe overnight parking program is being transformed into a **safe shower program** designed to help homeless individuals stay clean during the pandemic in **SAN LUIS OBISPO COUNTY**. The county will open showers at the former site of the safe parking program at an RV park and campground, KEYT-TV reported. Park staff will regularly disinfect the shower facilities and ensure participants are following site rules including social distancing.



*Aspen Journalism* reported. According to a 2017 study, buildings account for 53 percent of greenhouse-gas emissions in the county. Changes to land-use and energy codes include requiring battery systems to store power for homeowners with large solar installations.



## FLORIDA

• The **ORANGE COUNTY** Regional History Center launched a COVID-19 Collecting Project to **document the coronavirus pandemic**. The museum is asking county residents of its seven-county region to share their pandemic experiences through photographs, recordings, journal entries or social media posts, according to ClickOrlando.com. The goal of the project is to obtain the thoughts and feelings of individuals to help medical institutions, researchers and policymakers learn about the pandemic and better respond to a future health crisis.

• Ford Motor Company used a vehicle from the Sheriff's Office in **SEMINOLE COUNTY** in a trial aimed to **neutralize COVID-19 for law enforcement agency cars**, ClickOrlando.com reported. The new heated software bakes the inside of a car to sanitize hard-to-reach spots and remove viruses. The interior of the vehicle reaches 133 degrees for 15 minutes to reduce contamination by 99 percent.

## HAWAII

**HAWAII COUNTY** launched an **Emergency Resilience Loan Program** that offers fi-

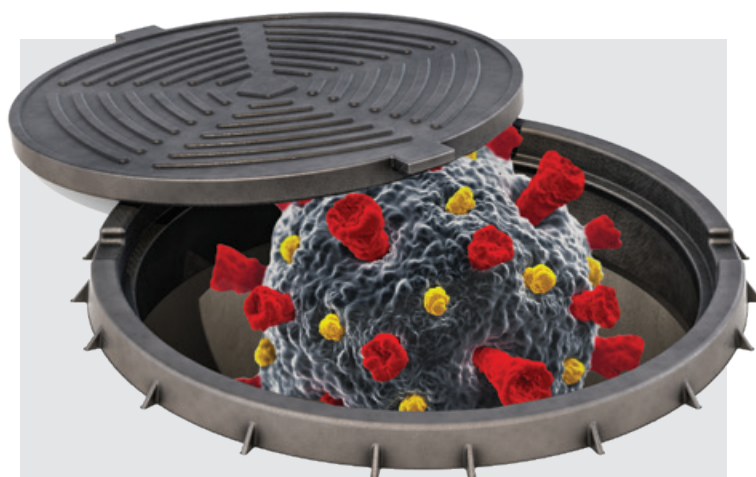
nancial counseling and loans to asset-limited, income-constrained, employed residents who lost income because of the COVID-19 outbreak, Big Island Video News reported. Loan amounts are \$2,500 for individual workers and \$5,000 for self-employed individuals. Community nonprofits are administering the program on behalf of the county.

## IOWA

**LEE COUNTY** launched the **Buy Lee County program** to encourage county residents to shop at local businesses. Through the programs, county residents who purchase \$20 worth of Chamber Checks or Keokuk Cash certificates are rewarded with an additional \$10 to spend at local businesses. The program aims to keep money in the county as businesses re-open their doors during the coronavirus pandemic. The county sold 600 certificates in two days, WGEM News reported.

## MARYLAND

Residents in **HARTFORD COUNTY** now have access to **free internet** at five county buildings. Officials expanded the internet service in response to COVID-19 and installed ex-



## MICHIGAN

• **MACOMB COUNTY** launched a pilot program to **check sewage for traces of coronavirus**. The county's public works division aims to identify hotspots of the virus by testing the sewage from different areas of the county to see where the virus is present, Fox 2 Detroit reported. Samples will be sent for testing.

ternal Wi-Fi access points that can be used in the buildings' parking lots, NottinghamMD.com reported. The Harford County Public library has also set up free public Wi-Fi spots at 11 of its branches.

## MICHIGAN

• For small businesses re-opening in **OAKLAND COUNTY**, county officials gave away 10,000 **small-business start-up kits**. Each COVID-19 safety toolkit contains face masks, no-touch thermometers, gloves and sanitizer, the

*Detroit Free Press* reported. Each kit is designed specifically for small businesses with fewer than 50 employees. The kits also include floor stickers for interior spacing, disinfectant wipes and posters with information on social distancing. Many items came from county-based manufacturers.

• Officials in **WAYNE COUNTY** launched an **e-filing program for personal protection orders**. Prior to the closure of the courthouse because of the coronavirus, the court

• **STANISLAUS COUNTY** is creating an **antibody-testing program** to help monitor the spread of the coronavirus and estimate how many residents have been infected. The county will start testing in June with plans to begin additional testing in October. The program, which is modeled after a University of Southern California research study, is estimated to cost \$425,000, *The Modesto Bee* reported. Participants will be able to access a database to see their results.

## COLORADO

Commissioners in **PITKIN COUNTY** adopted a new system to measure home efficiency in an effort to reduce emissions. The Home Energy Rating System (HERS) **sets energy requirements** and stricter efficiency standards for new construction and remodels,





launched the digital portal that can be accessed online for county residents to order requests remotely, the *Detroit Free Press* reported. Petitioners can also ask a judge to prohibit an individual from purchasing a firearm.

## NEW YORK

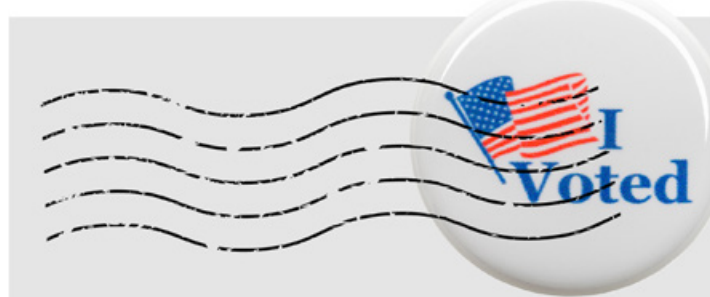
- With businesses struggling to acquire enough **personal protective equipment** to reopen under COVID-19 prevention guidelines, **NASSAU COUNTY** is combining \$100,000 from the Nassau Industrial Development Agency with \$400,000 in grant funding from the U.S. Department of Housing and Urban Development to supply that equipment. The county will provide 1,000 PPE kits, which include a contactless infrared digital thermometer, to scan employees and customers; five face shields for employees; 400 three-ply masks; 100 pairs of powder-free, vinyl gloves; two gallons of hand sanitizer with a spray pump; and a canister of 1,800 sanitizing wipes. The county will prioritize businesses with fewer than 20 employees that are owned by minorities and women and located in economically distressed neighborhoods.

- The middle of a lake seemed like the ideal place to avoid COVID-19 transmission a few months ago, but with new boat sales up, **SARATOGA COUNTY** deputies are going to spend more time **patrolling Saratoga Lake**. Their efforts will include both enforcing speed limits, wake rules and safety protocols for new boaters, but also physical distancing guidelines, the local CBS affiliate reported.

## NORTH CAROLINA

- Reopening certain **MECKLENBURG COUNTY** courthouse operations won't mean catching up on the more than 1,800 **pending eviction orders**. With most affected tenants behind on rent because of lost jobs, the county will prioritize child abuse and neglect, felonies and domestic violence cases while pursuing mediation for evictions. Charlotte's Community Relations Committee dispute resolution program will assist with the non-binding negotiations to hammer out payment schedules and public and private rental assistance, mostly done remotely, WFAE News reported.

- NEW HANOVER COUNTY** is planning to buy more than



## PENNSYLVANIA

With concerns about giving voters more time to **turn in mail ballots** for primary elections, the **BUCKS COUNTY** Board of Elections filed an emergency petition for Bucks County Court to set a new deadline of between two and seven days after the election, and to allow ballots received by that time to be counted if they are postmarked by election day. They said the current deadline will disenfranchise voters who receive their ballots too late to return them by Election Day, estimating that total at hundreds or thousands of voters, the *Philadelphia Inquirer* reported. State law requires ballots to be returned to county elections officials by 8 p.m. on an election day, and postmarks don't count.

20 FEMA trailers from the federal government, brought in for Hurricane Florence relief in 2018, to **supply affordable housing** for a year. The 22 units will then be resold to a private property owner to continue as workforce housing. Voice of America reported that the agreements to buy and sell the trailers for a total of \$391,000 will be a steep discount from the \$3.3 million sticker price for the whole lot.

- Unsatisfied with lagging data that takes months to accumulate and analyze, **WAKE COUNTY** Economic Development has launched **two economic surveys** to assess how businesses are coping during the COVID-19 pandemic. A business impact survey asks about impacts on hiring, finance, and short-term company decision making. A regional skills analysis asks what employee skills businesses need now and in the future, and had been planned before the outbreak with other regions in North Carolina.

## OHIO

**CUYAHOGA COUNTY** is fighting a fraud campaign that is preying on its citizens' sense of civic obligation. Scammers posed as a sheriff's department employee and convinced a woman to pay \$1,000 to avoid arrest for missing jury duty. *The Plain Dealer* reported that the con artists succeeded in part because of the alarming level

of detail they had about the victim, including that she recently served on a jury, and that she was called to serve again but asked to be excused because of her recent service. County officials reiterated to the public that the sheriff's department and the court would never ask potential jurors for personal information or money over the phone. The scammers set up an automated answering service that resembled that of the sheriff's department and led her to a live conman.

## TEXAS

Savings from the closure of most **TRAVIS COUNTY** parks because of the COVID-19 pandemic, coupled with utility savings and a little bit from the general fund will be enough for the county to provide access to water or wastewater service to a community that has lacked it for decades. The \$289,000 **waterline installation** will serve as a model to introduce similar pipeline projects into other water deserts in Travis County, commissioners noted, according to *The Monitor*.



## VIRGINIA

- In the year since **ARLINGTON COUNTY** ended home pickup of **recyclable glass**, res-

idents have dropped off more than 2 million pounds, with the rate of drop-off increasing. "A million pounds since January was impressive and we'll likely see another million at a much faster pace for obvious reasons," as residents stay at home amid the pandemic, said Peter Golkin, a spokesman for the Department of Environmental Services. "ABC stores are definitely doing strong business as are the grocery stores."

- HENRICO COUNTY** is going door-to-door, dropping off "**care kits**." Volunteers are leaving packages containing three reusable face coverings and informational flyers with strategies for combating COVID-19, along with informational flyers about the 2020 census, the *Henrico Citizen* reported.



## WASHINGTON

One of the first regions to react to the COVID-19 pandemic is now dealing with the consequences of residents protecting themselves. Sewer pipes and pumping stations are being **clogged by wipes**, hygiene products and personal protective equipment. "We have seen an uptick in disposable personal protective equipment," Marie Fiore of the **KING COUNTY** Wastewater Treatment Division told My Northwest. "Obviously, used gloves and masks are trash, and they need to go in the garbage. Toilets are not trash cans." Constant maintenance has helped the county avoid any significant damage to the system so far.

*News From Across the Nation is compiled by Charlie Ban and Rachel Looker. Does your county have news we should consider? Contact [cban@naco.org](mailto:cban@naco.org) and [rlooker@naco.org](mailto:rlooker@naco.org).*



## FLORIDA

- PASCO COUNTY** Commissioner Chairman Mike Moore and State Rep. Randy Maggard (R-Fla.) held a **food distribution** in the county. The distribution was in partnership with Farm Share, a non-profit organization that combats food insecurity. Over 50 volunteers distributed 33,000 pounds of food to an estimated 700 cars.

Rep. Maggard (far left) and Commissioner Moore unload food before the drive-through food distribution.



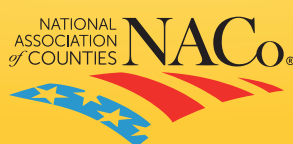


Thank you to our heroes - the nation's more than 3.6 million county elected officials and employees.

Join us in supporting direct federal aid for county services and the heroes who provide them.

Join the campaign! Take a photo or video with the sign below and get tips on submitting it here:

[NACo.org/WeAreCounties](https://NACo.org/WeAreCounties)



# WE ARE COUNTIES

