



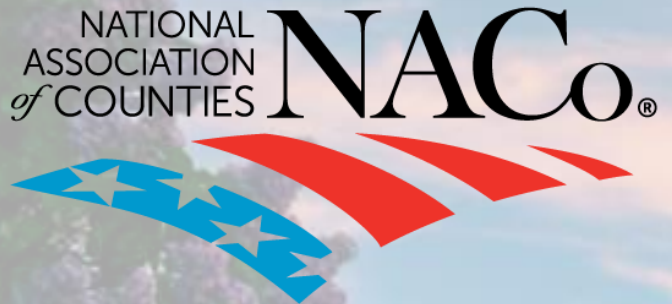
The BRECC National Network

connecting coal communities

BRECC is operated by the National Association of Counties using Federal funds under award ED22HDQ3070080 from the Economic Development Administration, U.S. Department of Commerce. The statements, findings, conclusions, and recommendations are those of the author(s) and do not necessarily reflect the views of the Economic Development Administration or the U.S. Department of Commerce.



BUILDING RESILIENT
ECONOMIES *in*
COAL COMMUNITIES



BUILDING RESILIENT
ECONOMIES *in*
COAL COMMUNITIES

Beautifying Brownfields: An unexpected opportunity for your coal community

May 23, 2024



TODAY'S AGENDA

01

Welcome & Introduction

02

Overview of EPA's
Brownfield Program

03

Brownfield Projects in
Energy Communities

04

Q&A

05

Resources & Adjourn



NATIONAL
ASSOCIATION
of COUNTIES

NACo®

BUILDING RESILIENT
ECONOMIES *in*
COAL COMMUNITIES

The BRECC National Network

connecting coal communities



Jon Grosshans
Senior Advisor,
U.S. Environmental Protection Agency

Interagency Working Group on Coal and Power Plant Communities and Economic Revitalization



Beautifying Brownfields: An Unexpected Opportunity for Your Coal Community

Jon Grosshans, US EPA

May 2024

Getting More Funds, to More Places, More Quickly



Upgrade Infrastructure



Clean Up
Environmental
Damage

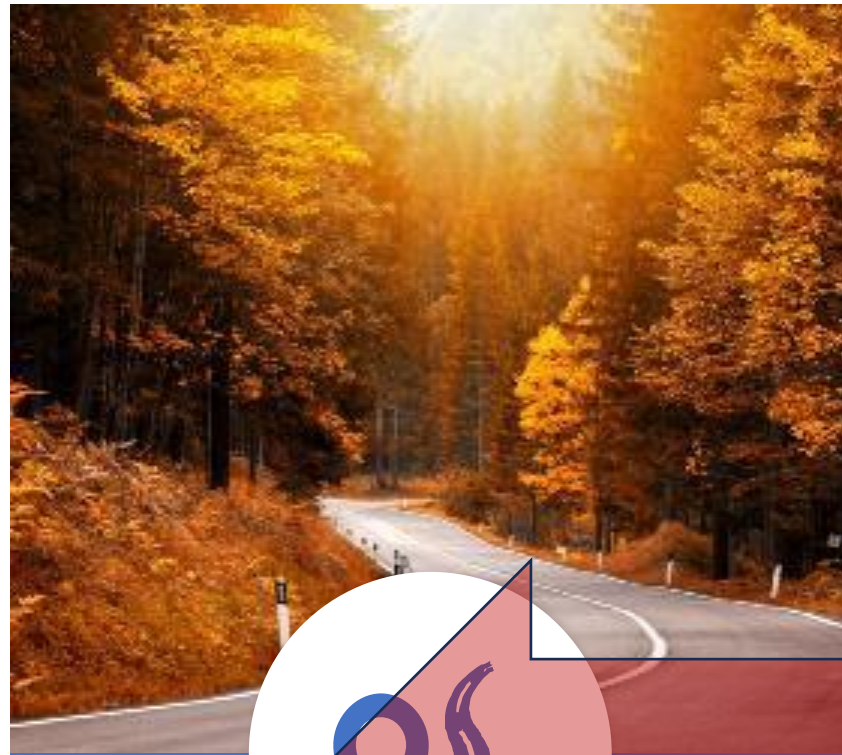


Promote
Entrepreneurship



Support Workforce
Development

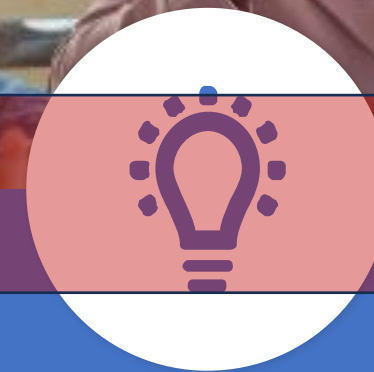
Getting More Funds, to More Places, More Quickly



Upgrade Infrastructure



Clean Up
Environmental
Damage



Promote
Entrepreneurship



Support Workforce
Development



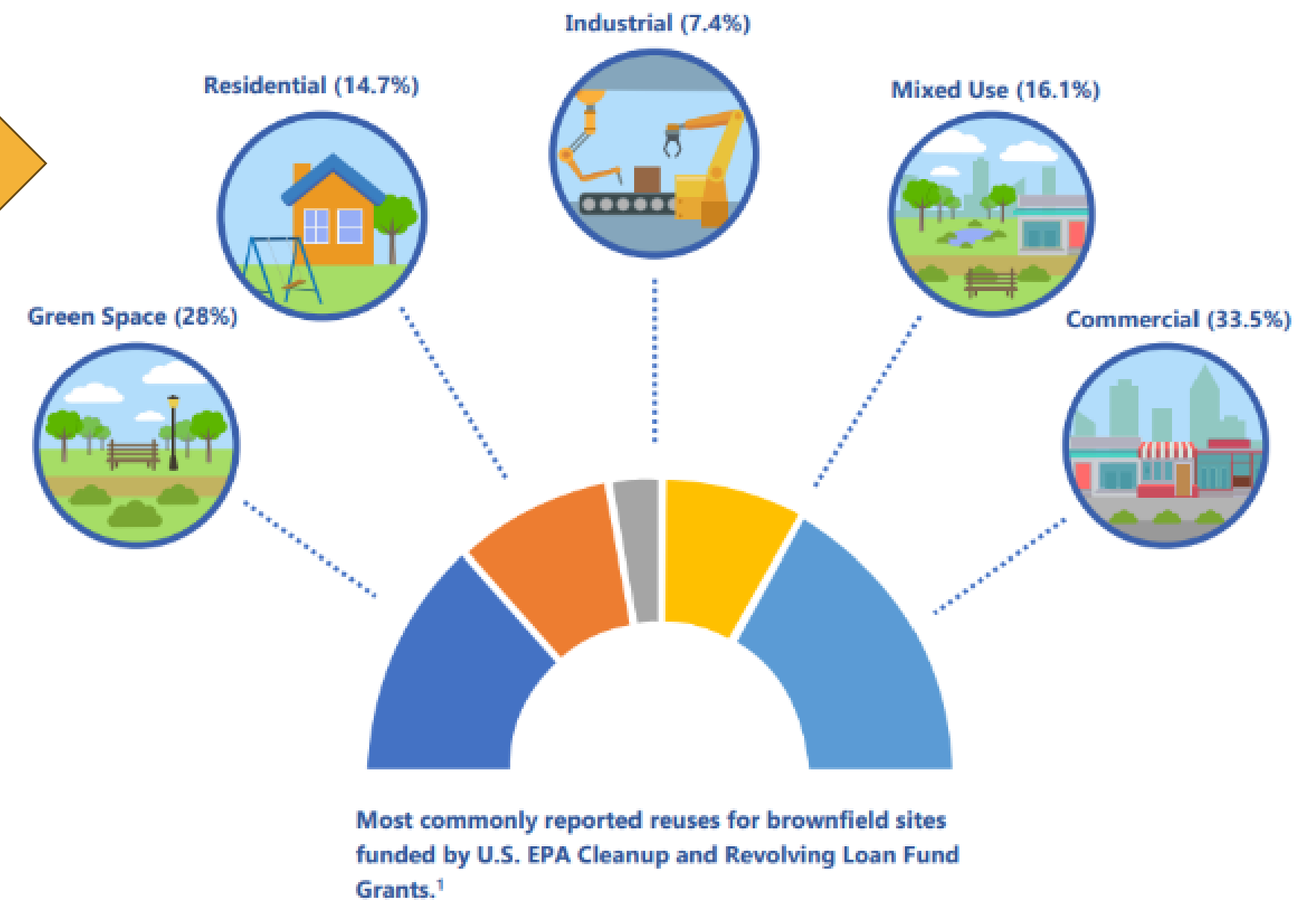
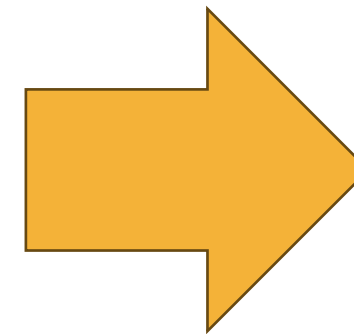
Former Ottawa Street Power Station

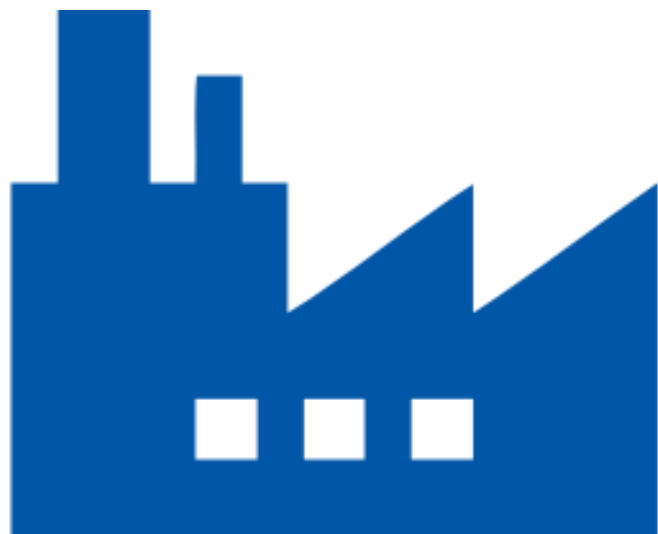
Lansing,
Michigan

Accident Fund
Headquarters



Legacy Contamination – Investment





BROWNFIELD / ENVIRONMENTAL STATUS

The site has been established as a brownfield based on the presence of the potential presence of contamination to exist on the site from prior uses.



SITE CONTEXT

Is the site located in an area of strategic importance where its redevelopment could have the most impact?



MARKET AND ECONOMIC FEASIBILITY

Understand realistic projections and opportunities for the site based on current and future economic market trends.



WILLING LAND OWNER

The availability of the site for sale or the willingness of the site's current owner to participate in the planning process.



FEEDBACK FROM PUBLIC

Which sites does the public see as the highest priority locations? Are there other sites that should be considered?

Challenge: Initial Steps in Revitalization



Brownfields Support Available

- EPA's Brownfields Program offers several resources that can assist communities struggling with brownfield assessment, cleanup, or redevelopment.
 - EPA's Targeted Brownfields Assessment (TBA) technical assistance is available to promote environmental investigation and/or reuse planning.
 - Available through EPA's 10 Regional Offices
 - EPA's Land Revitalization Program helps communities turn challenging collections of brownfield sites into productive, sustainable, and safe properties.
 - Coal plant reuse and redevelopment tools
<https://www.epa.gov/land-revitalization/land-revitalization-coal-plant-reuse-and-redevelopment>
 - EPA's Brownfields Program provides competitive grants for brownfields assessment, cleanup, revolving loans, and environmental job training.
 - Workforce Development Grants: **Due August 15 2024**
 - Multipurpose, Assessment, and Cleanup grants open for applications in **Fall 2024**.
- For more information on EPA's Brownfields grants and technical assistance programs: <https://www.epa.gov/brownfields>

COAL PLANT DECOMMISSIONING FINANCING CLEANUP AND REDEVELOPMENT

Many coal-fired power plants are expected to close in the coming years. Coal plant communities are faced with potentially long-term job and tax revenue loss, legacy environmental contamination and the need for new economic opportunities.

EPA's Brownfields Program empowers states, communities and other stakeholders to work together to assess, safely clean up and sustainably reuse brownfields. The revitalization of brownfields properties, including former power plants, can create benefits for communities.

Understanding the costs associated with the decommissioning, remediation and redevelopment planning for a former power plant is an important aspect of a community revitalization plan. Depending on the community's vision for the property's end use, the costs of decommissioning, demolition, remediation and redevelopment can be substantial. With well-estimated project costs, a project team and the community can better identify the best potential funding sources for meeting environmental cleanup challenges. In addition, a good sense of potential project costs will inform decision-making at each phase of the project. Although costs may appear to be prohibitive at first, several financial mechanisms may be available to support different phases of the assessment, cleanup and redevelopment process.

EPA prepared this fact sheet to help communities that may be affected by the closure of coal-fired power plants. Fact sheets covering stakeholder identification and facilitation and plant decommissioning, as well as remediation and redevelopment, are also available.

STAKEHOLDER INVOLVEMENT THROUGHOUT

Initiation	Decommissioning	Remediation	Redevelopment
Planning grants for stakeholder teams. Economic and social analysis. Tax increment funding.	Job training grants for remediation. Brownfields Assessment grants. Infrastructure grants.	Remediation Cleanup grants. Underground Storage Tank Cleanup funds.	Job training grants for workers at redevelopment sites. Energy efficiency and renewable energy grants.

EPA United States Environmental Protection Agency

Coal Plant Decommissioning
Financing Cleanup and Redevelopment

1



Accessing Brownfield / Revitalization Resources

EPA Technical Assistance for Brownfields – Regional Third-Party Provider

State Brownfields Program and Grants

EPA Regional Brownfields Program Contacts

Land Revitalization Technical Assistance

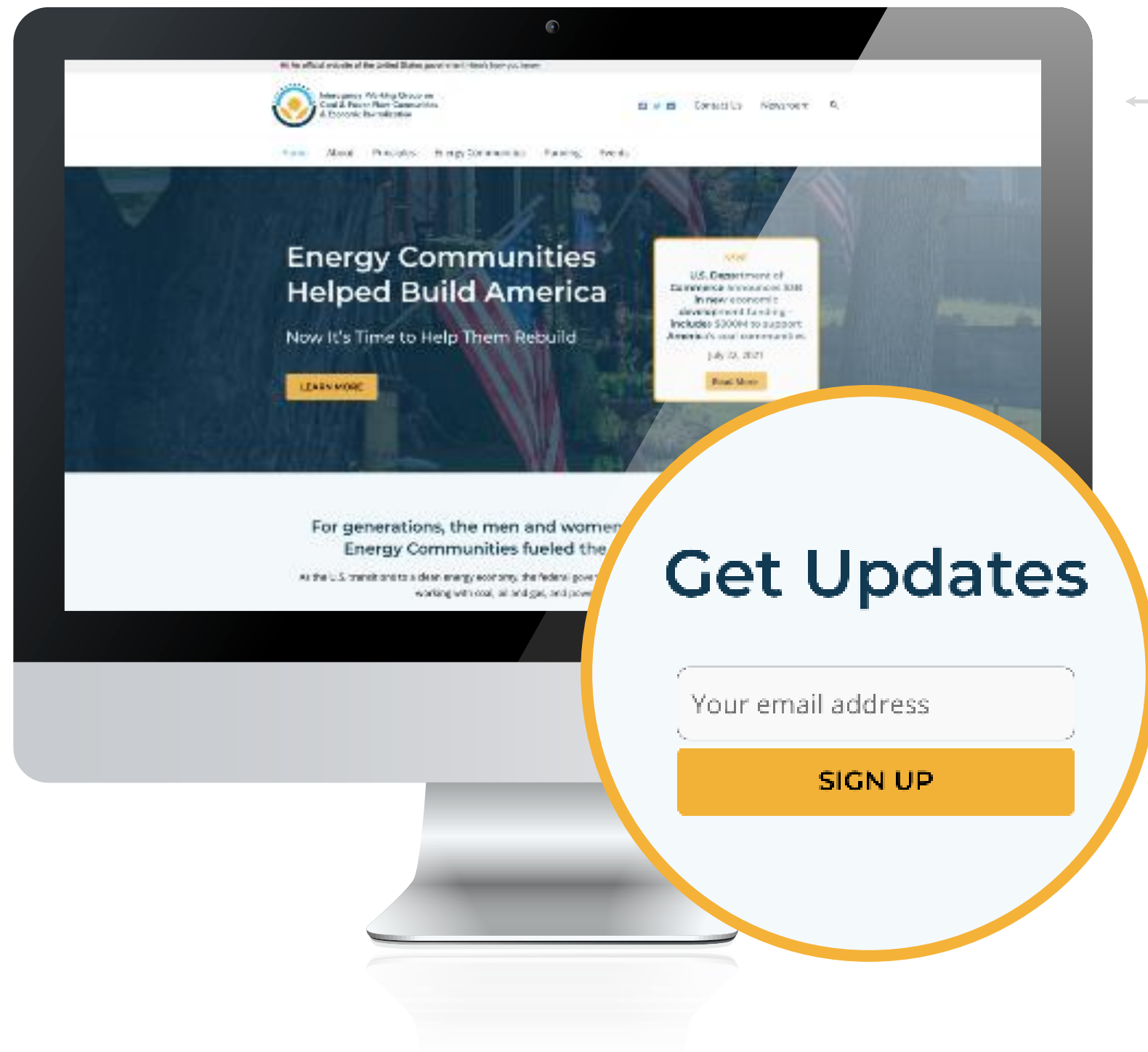
Targeted Site Assistance

How-to guides, case studies, and best practices available on EPA websites

EPA Brownfields Grants: New or Existing



Sharing Information: IWG Website & Social Media



energycommunities.gov



[@EnergyComm_US](https://twitter.com/EnergyComm_US)



[@EnergyCommunitiesUS](https://www.facebook.com/EnergyCommunitiesUS)



[@energycommunitiesus](https://www.linkedin.com/company/energycommunitiesus)



Carrie Staton
***Region 3 Brownfields Director,
West Virginia University***



Mid-Atlantic TAB

US EPA Region 3



Our Purpose

- Mid-Atlantic TAB provides technical assistance on brownfield redevelopment to stakeholders in Delaware, Maryland, Pennsylvania, Virginia, West Virginia, and Washington, DC.
- Our services are funded by US EPA and free to stakeholders. We provide broad educational resources as well as project and community support that is tailored to meet the needs and priorities of each community or project stakeholder.



Our Team

- Mid-Atlantic TAB is a collaboration among leading programs across the region:
 - West Virginia University
 - Virginia Tech
 - Marshall University
 - University of Delaware



Mid-Atlantic TAB

Independent resource providing support and guidance to help communities understand:

- Acquiring, assessing, cleaning up and redeveloping brownfield properties;
- The health impacts of brownfield sites;
- How science and technology are used for site assessment, remediation, redevelopment and reuse; and
- How to comply with voluntary cleanup requirements.

Our Services



Education & Outreach

- Webinars
- Fact Sheets
- Brownfields Bootcamp
- Community Trainings
- Conference Presentations
- General resources



EPA Grantee Support

- State Cohort Facilitation
- Cooperative agreement support
- Grant Kickoff
- RFP support
- Community Involvement
- Grant Debriefs



EPA Applicant Support

- Workshops & webinars
- Grant planning consultations
- SAM.gov/grants.gov support
- Grant review
- Grant debrief



Site-Specific Technical Assistance

- Design Assistance
- Community involvement & facilitation
- Resource Roadmaps
- Ownership & property transfer consultation
- VRP/VCP Support
- Redevelopment Roundtables



Area-Wide Technical Assistance

- Inventory support
- Business & Brownfields Walkabout
- State program support

TAB Hotline

- Reach out with questions not addressed online or within outlined TAB services
- Direct Email: wvutab@mail.wvu.edu
- Sign up for [individual consultation](#)
 - The more information provided about questions in advance, the better we can assist you

How to Connect with Mid- Atlantic TAB

- Web: <https://brownfields.wvu.edu>
- Direct Email: vvutab@mail.wvu.edu
- Publications: [Sign up for our mailing list](#)
- Phone: 304-293-7071

On the Calendar

Climate-Smart Brownfields

- June 6 & 13 @ 1 PM EDT
 - Two-part webinar featuring discussion of:
 - assessing climate hazards on your site;
 - considering potential impacts on vulnerable populations;
 - learning about resilience strategies to consider in each phase of the redevelopment project; and
 - addressing climate hazards as part of your EPA grant application.

Virginia Brownfields Conference

- June 25-27 in Lynchburg
 - Mobile workshops
 - Connect with TAB, EPA, & VADEQ
 - Design workshop
 - Educational Sessions

WV Brownfields & Main Street Conference

- September 10-12 in Summersville
 - Mobile workshops
 - Grant Training
 - [WV Brownfield Awards](#)
 - Educational Sessions
 - Call for posters coming soon!



Project Highlight

Smithers, WV

Longacre Bottom

- Smithers, WV
- 23.65 Acres
- Former site of Coal Camp housing, mining staging, coke ovens
- Recently acquired by City of Smithers



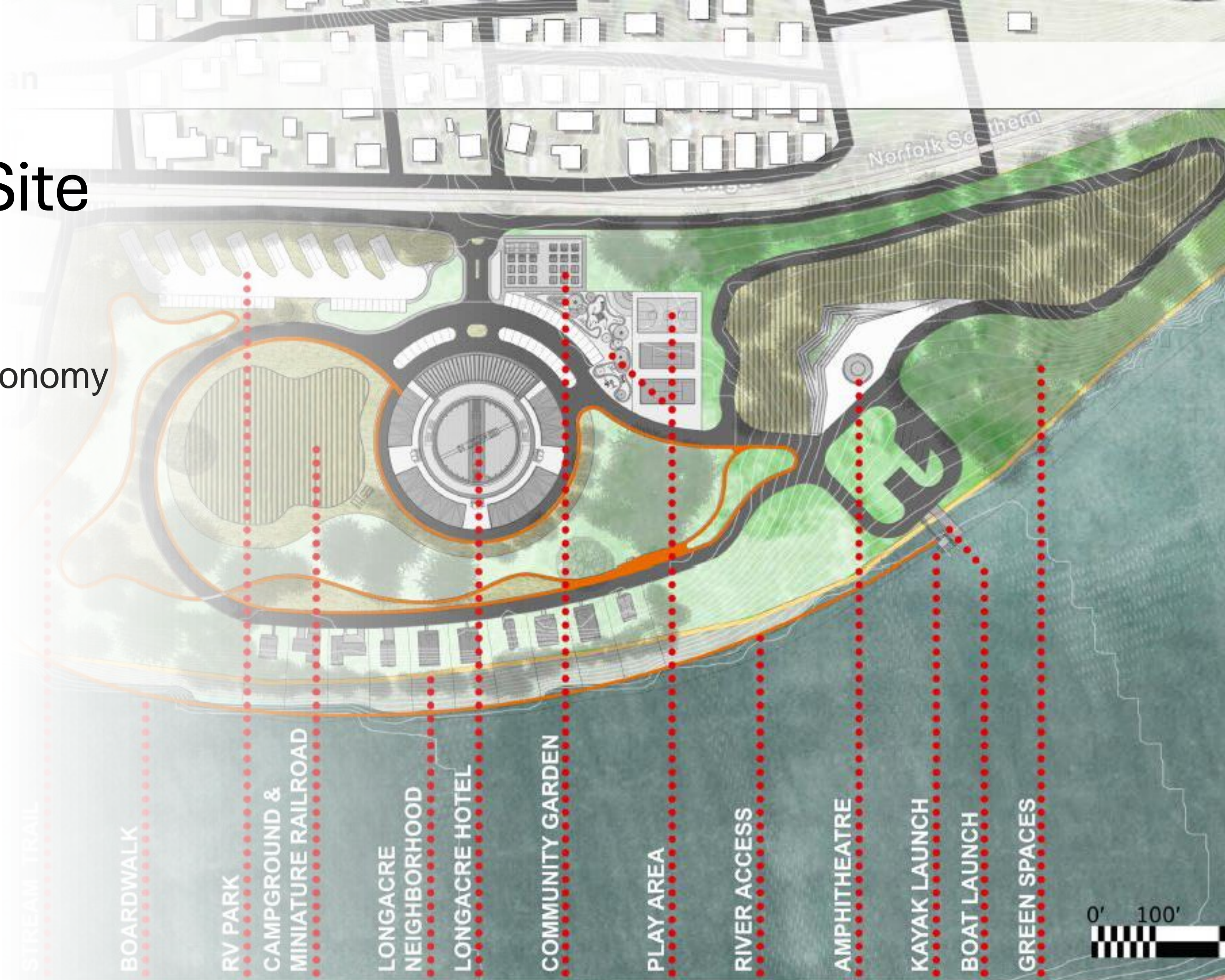
Past Support

- EPA Small Community Technical Assistance Grant kicked off discussion and education on brownfields
- Previous support from WVU School of Design & Community Development including:
 - Conceptual design
 - Initial community engagement
- Environmental Site Assessments in partnership with WVDEP



Future of the Site

- Amenities for outdoor recreation & tourism economy
 - Lodging,
 - Public river recreation access,
 - Restaurants,
 - Amphitheater,
 - Marina,
 - Outdoor sports facilities,
 - Museum,
 - Riverfront boardwalk, and
 - Trail network.



Perfect Pitch

- Project competition at Brownfields 2023
- Mayor Anne presented their project to a national audience
- The prize –
 - Technical Assistance from KSU TAB



TAB Forces Combined!



KSU TAB Assistance

- Site visioning & community engagement
- Preliminary market analysis
- Reuse alternatives for the site
- Conceptual plans
- Feasibility analysis

Mid-Atlantic TAB Assistance

- Resource Roadmap
 - Define the specific project components and phases of the project.
 - Estimate costs for each component and phase.
 - Identify the best sources for funding each component and phase.
- Creating a chart or matrix with this information, organized by project component and phase.

Contact Information

Carrie M. Staton
Director, Mid-Atlantic TAB
Carrie.staton@mail.wvu.edu
304-293-7071
<https://brownfields.wvu.edu>



The BRECC National Network

connecting coal communities



Maggie Belanger
***Region 8 Brownfields Director,
Kansas State University***

Technical Assistance to Brownfields (TAB)

A national program funded by U.S. EPA

University of Connecticut EPA Region 1

New Jersey Institute of Technology (NJIT)

EPA Regions 2 and 4

The West Virginia University EPA Region 3

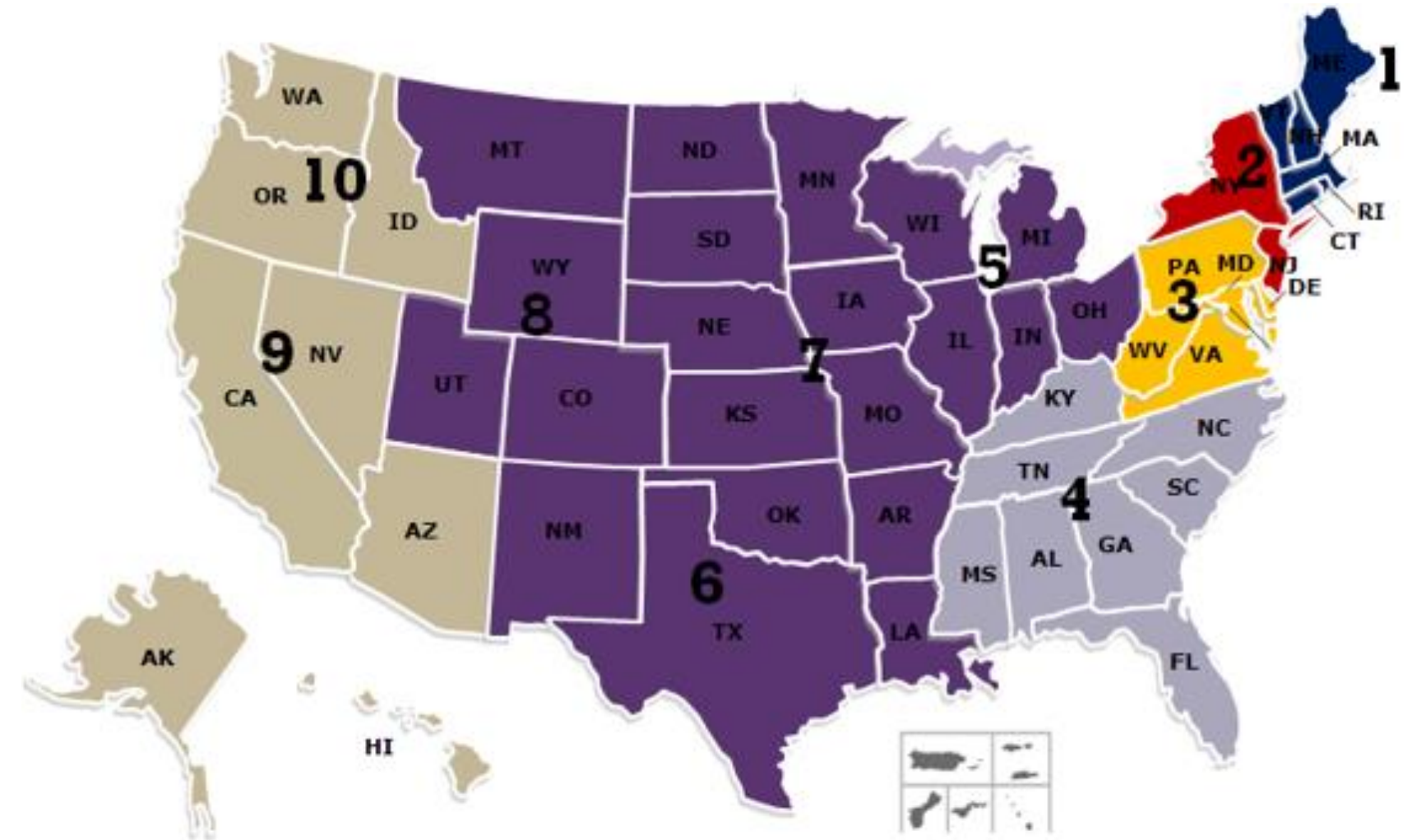
The International City/County Management Association

EPA Region 4

Kansas State University – EPA Regions 5, 6, 7 & 8

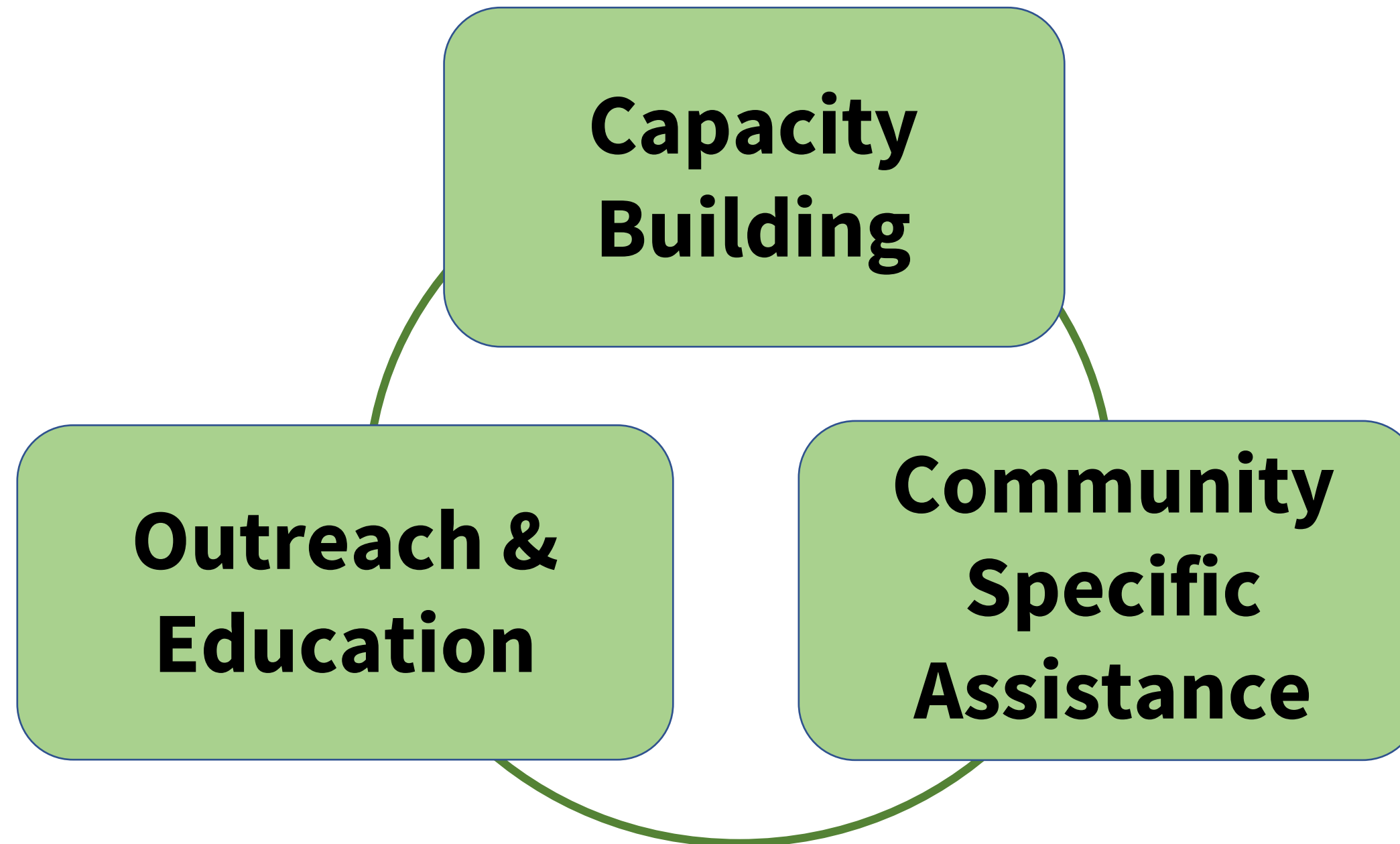
Center for Creative Land Recycling (CCLR)

EPA Regions 9 and 10



- Technical assistance for communities and tribes revitalizing communities through brownfields redevelopment
- Services provided are **free** and tailored to meet specific needs

KSU TAB Services



Empower communities to realize tangible change through engagement, education, tools and resources.

You've Got a Friend

KSU TAB can fill gaps and help support overall project goals.

- Help inventory & prioritize brownfields sites
- Strategic planning and reuse visioning
- Economic feasibility and highest/best use market analysis
- Community outreach and input
- Building community resiliency including the incorporation of clean energy into redevelopment
- Help identify funding sources
- Review of plans and technical reports
- Help in contractor procurement





TAB
Technical Assistance
to Brownfields

KANSAS STATE
UNIVERSITY

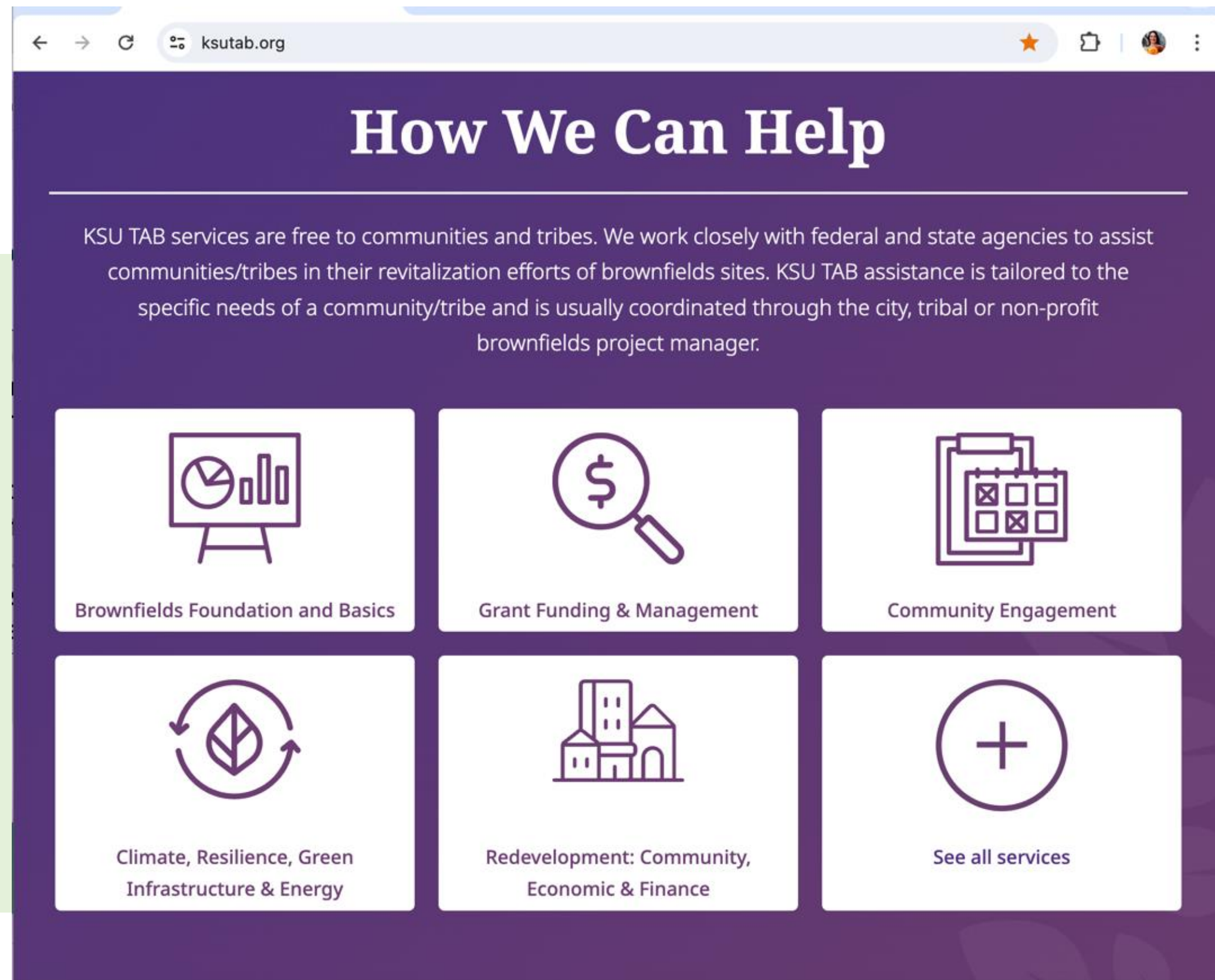
KSU TAB Resources And Power House Case Study

Maggie Belanger, Senior Director, KSU TAB
May 2024

ksutab.org

TAB Resources

- Grant management
- Webpage full of resources
 - Writing an RFQP; Hiring a Contractor
 - Educational Fact Sheets
- Recorded & Shared Presentations from Educational Events
- Brownfields Community Capacity Assessment
- E-Tools Suite (BiT, TAB EZ, Community Benefits Calculator, PEER)



Brownfields Inventory Tool (BiT)

Free Online Tool to Store & Manage Your Community Data

- Document site details & information
- Structured to mirror the brownfields redevelopment process
 - Tracking site progress through assessment, cleanup and redevelopment
- Upload photos and documents
- Funding Summary
- Import and Export data

The screenshot displays the BiT web interface. On the left is a navigation sidebar with a menu titled 'In This Section:' containing links for Site Data (Site Information, Site Assessment, Sampling, Cleanup, Institutional Controls, Redevelopment/Reuse), Site Admin Info (Complaints, Inspection/Oversight, Enforcement, Funding Summary, View/Upload Documents, Activity Log, Back to Site Inventory), and Quick Links (BiT Tutorial, Data Search / Export, Generate Reports, Import Data (Tables), Site Inventory Data, View Sites on Map, BIT-ACRES Interface, View Scheduled Imports). The 'View/Upload Documents' and 'BIT-ACRES Interface' links are highlighted with blue boxes. The main content area is titled 'KSU Email Site: Site Information' and shows a breadcrumb trail: 'BiT Home > BiT Toolbox > Site Inventory Data > Site Data > Site Information'. Below this is a purple instruction box stating that items marked in dark blue are optional. The form is divided into four tabs: 'Site Details' (selected), 'Ownership', 'PPF Status and Approvals', and 'Comments'. The 'Site Details' tab contains fields for Site Name (KSU Email Site), Site Status (In Assessment Phase), Site Type (Petroleum Site), ACRES Property ID (109902), Address (Street Address/P.O. Box: 523 W Indiana, City: Elkhart, State: Indiana, Zip Code: 46517, County: Brown), Parcel/Allotment Number(s) (with 'Add To List' and 'Remove Selected' buttons), and a text area for Current Use/History/Past Ownership (containing the text: 'The property has been used for numerous purposes including a dry cleaner and a print shop'). To the right of these fields is a 'Legal Description (Optional)' section with fields for Township, Name/Number of Principal Meridian, Part of Section, Section, and Range. At the bottom right is a 'Prominant Past Use(s)' table with columns for Acres and Square Feet (if multi-story building), and rows for Greenspace and Residential.

- Accessed anytime
- BiT Mobile allows access anywhere
- Data is **not** available to the public
 - Password protected
 - Stored on private, third-party servers
 - ‘Owned’ by the user who generated the data
 - Only ‘owners’ can share data with other users
- Allows site and data tracking before reporting to ACRES

Welcome to BiT

The Brownfield Inventory Tool (BiT) is a free, web-based, comprehensive site inventory and brownfields program management tool. BiT is a powerful and useful tool for anyone working to establish a site inventory database to store, track, and manage site and property data, including those working under a U.S. EPA cooperative agreement. Users are able to enter detailed site data; track site progress and funding sources; upload photos, reports, and other documents; and export data in a variety of formats. BiT includes an interface with the U.S. EPA ACRES to allow for easy reporting for U.S. Brownfields EPA Grantees and can also be a collaborative tool IF a user elects to grant permission to another user. All BiT users are asked to create a user name and password to ensure that the data contained in BiT remains private.

Get Started With BiT

BiT Mobile:

The BiT Mobile App was rereleased in May 2023 for use on smartphones and tablets. BiT Mobile allows data gathering and updates on the go. Save your data in the field then sync when you're back in the office with wifi or cellular data.

Download from the Apple App Store by searching BiT Mobile.

Download from the Google Play Store by searching Brownfields Tool.



BiT ACRES Interface



Add a new site to ACRES

Rodeo Arena: ACRES Interface

Mode: Moving Data from BiT to ACRES

BIT Home

Back to Site Select

View the data here that will be exported to ACRES.

Below is a side-by-side comparison of the site data currently in BiT with what is currently in ACRES. The red ACRES after Export column is a way to review what the ACRES data will be after the export is completed. Any changes made on this page to the BiT data will be saved to the existing BiT site. Some BiT data can be edited on this page directly, and for others you will be directed to the BiT tool to make any desired changes. Please review all changes on this page before proceeding!

Field or category change

Can be edited here

Must be edited from within BiT

Successful update to a field

Failed attempt at updating a field

Data in BiT

Data in ACRES

ACRES after Export

General

Site Information

Site Size

Zip Code

City

State

Street Address/P.O. Box

Longitude

Latitude

Ownership Entity

ACRES Property ID

County

4

81334

Towaoc

CO

So Ute Trail Road

-108.72598699

37.18341211

Government(Tribal,...

Montezuma

4

81334

Towaoc

CO

So Ute Trail Road

-108.72598699

37.18341211

Government(Tribal,...

Montezuma

There are changes!

Update Existing Site Data

Data in BiT

Data in ACRES

ACRES after Export

Export

There are changes!

General

Site Information

Site Name

Site Size

Zip Code

City

State

Street Address/P.O. Box

Longitude

Latitude

Ownership Entity

ACRES Property ID

County

Food Dist Trailers

10

81334

Towaoc

CO

P.O. Box BB

-108.7273124

37.18230796

Government(Tribal,...

172121

Montezuma

There are changes!

Site Assessment

Is Cleanup required?

Enrolled in a State Tribal Program?

Yes

Unknown

Yes

Yes

Yes

There are changes!

Institutional Controls

Institutional Control Required?

IC Category

Yes

Informational Devi...

Yes

Yes

Informational Devi...

There are changes!

KSU TAB Grant Writing Resources – TAB EZ

My Grant Applications | TAB EZ

ksutab.org/tools/tabez/

Sign in | Kansas Sta... KSU TAB Program StagingKSUTAB Staging ACRES Welcome To Livia... ACRES CMSAdmin Staging EPA Brownfields Gr... MI State Resources

TAB TECHNICAL ASSISTANCE TO BROWNFIELDS

Home About Events Online Tools Resources Tribal TAB Contact Maggie

TAB EZ

Home > Online Tools > TAB EZ

My Grant Applications

Start New Grant Application Show More Grant Applications (27)

Cynthia's test Cynthia Annett 07/03/2022 Edit Delete	test 001 Maggie Weiser 06/21/2022 Edit Delete
OVERVIEW Test 2022 June Maggie Weiser 06/21/2022 Edit Delete	Debi FY23 Assessment Debi Morey 06/13/2022 Edit Delete
2022 June Assess Test Maggie Weiser 06/13/2022 Edit Delete	15 Oct. RLF Final Check Maggie Weiser 10/15/2021 Edit Delete

Welcome To TAB EZ

TAB EZ (Technical Assistance to Brownfields (TAB) easy brownfields grant application (EZ) software program) provides a template, configured for the type of U.S. EPA Brownfields Multipurpose, Assessment, Revolving Loan Fund (RLF), or Cleanup (a.k.a. MARC) grant application you are writing. Content written in TAB EZ can be exported to a Microsoft Word (.doc) file for final editing, formatting and packaging before submittal.

How do I start a grant application?



Sample Grant Applications ▾

How to use TAB EZ ▾

Helpful Links

- [Definitions](#)
- [Acronyms](#)
- [Assessment Grant Help](#)
- [Cleanup Grant Help](#)
- [Statistics / Census Information](#)
- [Helpful Hints](#)
- [Revolving Loan Fund Grant Help](#)

TAB EZ

Home > Online Tools > TAB EZ > Webpage Demo

Webpage Demo

Overview

Setup

Application Configuration

Manage Participants

Grant Content

I.V.D. Narrative Information Sheet ▶

I.V.E. Narrative/Ranking Criteria for Cleanup Grants ▶

III.B. Threshold Criteria for Cleanup Grants ▶

III.B. Threshold Criteria for Cleanup Grants ▶

Export to Word Total Character Count: 0

Application Configuration

Your selections below will determine which sections of the Cleanup Grant application are available for editing (adding text) and in some cases will auto-populate corresponding sections of the application. At any time, you may select "Application Configuration" under "Setup" in the Grant Menu to change these choices and the configuration of your application outline. **Please note, changing the application configuration will also change the outline. Any data entered into a section that is removed based on the new configuration will be deleted and only the most recent edits will be saved. If you do not want to lose any content, it is recommended to create a new application with a new configuration.**

Entities applying for an FY24 Cleanup Grant may not apply for an FY24 Multipurpose Grant.

Cleanup Grant - Eligibility Status Check

Funding Amount Requested \$ 0

What type of contamination will be addressed with the grant funding?

Select...

Please select one of the eligible entities that describes your organization.

Select...

Previously Awarded Cleanup Grants (Select One)

Select...

Draft Analysis of Brownfield Cleanup Alternatives (ABCA) (Select One)

Select...

Multipurpose Grant Recipient Status (Select One)

Select...

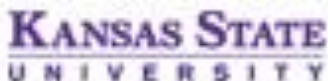
Site-Specific Configuration


+ Add a Site * You can add one or more sites for site-specific applications

Save Configuration Save and Continue

KSU TAB Grant Writing Resources – TAB EZ

Assessment	Cleanup	Multipurpose	RLF
<div><div>Application Configuration</div><div>Manage Participants</div><div>Grant Content</div><div>IV.D. Narrative Information Sheet ▼</div><div>IV.E. Narrative/Ranking Criteria (and Evaluation Criteria) for Assessment Grants ▼</div><div>III.B. Threshold Criteria for Assessment Grants ▼</div><div>III.B.1. Applicant Eligibility ●</div><div>III.B.2. Community Involvement ●</div><div>III.B.3. Named Contractors and Subrecipients ○</div><div>III.B.4. Expenditure of Assessment Grant Funds ○</div><div>III.C. Additional Threshold Criteria for Site-Specific Applications Only ▼</div><div>III.D. Additional Threshold Criteria for Community-wide Assessment Grants for States and Tribes Only ○</div><div>Export to Word</div><div>Total Character Count: 3268</div></div>	<div><div>Application Configuration</div><div>Manage Participants</div><div>Grant Content</div><div>IV.D. Narrative Information Sheet ▼</div><div>IV.E. Narrative/Ranking Criteria for Cleanup Grants ▼</div><div>III.B. Threshold Criteria for Cleanup Grants ▼</div><div>III.B.1. Applicant Eligibility ○</div><div>III.B.2. Previously Awarded Cleanup Grants ○</div><div>III.B.3. Expenditure of Existing Multipurpose Grant Funds ○</div><div>III.B.4. Site Ownership ○</div><div>III.B.5. Basic Site Information ○</div><div>III.B.6. Status and History of Contamination at the Site ○</div><div>III.B.7. Brownfields Site Definition ○</div><div>III.B.8. Environmental Assessment Required for Cleanup Applications ○</div><div>III.B.9. Enforcement or Other Actions ○</div><div>III.B.10. Sites Requiring a Property-Specific Determination ○</div><div>III.B.11. Threshold Criteria Related to CERCLA/Petroleum Liability ▼</div><div>III.B.12. Cleanup Authority and Oversight Structure ▼</div><div>III.B.13. Community Notification ▼</div><div>III.B.14. Statutory Cost Share ○</div></div>	<div><div>Application Configuration</div><div>Manage Participants</div><div>Grant Content</div><div>IV.D. Narrative Information Sheet ▼</div><div>IV.E. Narrative/Ranking Criteria (Evaluation Criteria) for Multipurpose Grants ▼</div><div>III.B. Threshold Criteria for Multipurpose Grants ▲</div><div>III.B.1. Applicant Eligibility ○</div><div>III.B.2. Community Involvement ○</div><div>III.B.3. Target Area ○</div><div>III.B.4. Affirmation of Brownfields Site Ownership ○</div><div>III.B.5. Use of Grant Funds ○</div><div>III.B.6. Required Cost Share ○</div><div>Export to Word</div><div>Total Character Count: 0</div></div>	<div><div>Application Configuration</div><div>Manage Participants</div><div>Grant Content</div><div>IV.D. Narrative Information Sheet ▼</div><div>IV.E. Narrative/Ranking Criteria (and Evaluation Criteria) for RLF Grants ▼</div><div>III.B. Threshold Criteria for RLF Grants ▲</div><div>III.B.1. Applicant Eligibility ○</div><div>III.B.2. Demonstration of Previous RLF Grant Status ○</div><div>III.B.3. Expenditure of Existing Multipurpose Grant Funds ○</div><div>III.B.4. Description of RLF Boundaries ○</div><div>III.B.5. Oversight Structure and Legal Authority to Manage a Revolving Loan Fund ○</div><div>III.B.6. Statutory Cost Share ▼</div><div>III.B.7. Named Contractors and Subrecipients (other than borrowers and site cleanup subgrantees) ○</div><div>Hardship Waiver Request ○</div></div>





KSU TAB Grant Writing Resources – TAB EZ

TAB EZ

[Home](#) > [Online Tools](#) > [TAB EZ](#) > Webpage Demo

Webpage Demo

Grant Content

IV.D. Narrative Information Sheet ▶

IV.E. Narrative/Ranking Criteria for Cleanup Grants ▼

IV.E.1 Project Area Description and Plans for Revitalization ▼

IV.E.1.a Target Area and Brownfields ▼

IV.E.1.a.i Overview of Brownfield Challenges and Description of Target Area ○

IV.E.1.a.ii Description of the Proposed Brownfield Site(s) ○

IV.E.1.b Revitalization of the Target Area ▶

IV.E.1.c Strategy for Leveraging Resources ▶

IV.E.2 Community Need and Community Engagement ▶

IV.E.3 Task Descriptions, Cost Estimates, and Measuring Progress ▶

IV.E.4 Programmatic Capability and Past Performance ▶

III.B. Threshold Criteria for Cleanup Grants ▶

III.B. Threshold Criteria for Cleanup Grants ▶

IV.E.1.a.i Overview of Brownfield Challenges and Description of Target Area

Discuss the brownfield challenges and their impact on the city(ies), town(s), or geographic area(s) targeted by this application. Provide a brief overview of how this grant will potentially help address those challenges and impacts.

Within the city(ies), town(s), or geographic area(s) discussed above, identify and describe the specific target area(s) where you plan to perform the grant activities, such as a neighborhood, district, corridor, or census tract. *Depending on the scope and design of your project, one or more target areas may be presented.*

[Evaluation Criteria for Cleanup Grants](#)

This section is worth 5 points. Your application will be evaluated on the extent to which:

- the brownfield challenges are clearly discussed and the degree to which the brownfield challenges impact the city(ies), town(s), or geographic area(s) targeted by this application;
- this grant will potentially help address those challenges and impacts; and,
- the applicant clearly identifies and describes the specific target area(s) within city(ies), town(s), or geographic area(s).

[HELPFUL HINTS](#)

Paragraph ▼

B *I*

Save

Save And Complete

Previous

Next

Add Comment

View Section Revisions

Export to Word

Total Character Count: 0

Budget Categories	Project Tasks (\$)					
Direct Costs	Task 1	Task 2	Task 3	Task 4	Total	
Personnel	0	0	0	0	0	×
Fringe Benefits	0	0	0	0	0	×
Travel*	0	0	0	0	0	×
Equipment**	0	0	0	0	0	×
Supplies	0	0	0	0	0	×
Contractual	0	0	0	0	0	×
Construction***	0	0	0	0	0	×
Other (include subawards and specific participa	0	0	0	0	0	×
+ Add Row + Add Column	×	×	×	×		
Total Direct Costs	0	0	0	0	0	
Indirect Costs	0	0	0	0	0	
Total Budget	0	0	0	0	0	

* Travel to brownfields-related training conferences is an acceptable use of these grant funds.

** EPA defines equipment as items that cost \$5,000 or more with a useful life of more than one year. Items costing less than \$5,000 are considered supplies. Generally, equipment is not required for assessment grants.

*** Costs must be placed on the Construction budget line when at least 50% of the estimated amount of the contract(s) will be for the remediation of contamination at the brownfields site. If the costs are unknown at the time of application submission, place the costs on the Other budget line. Construction costs do not typically apply to assessment activities. See the FY24 FAQs for more information.

Save

Save And Complete

Export to Word

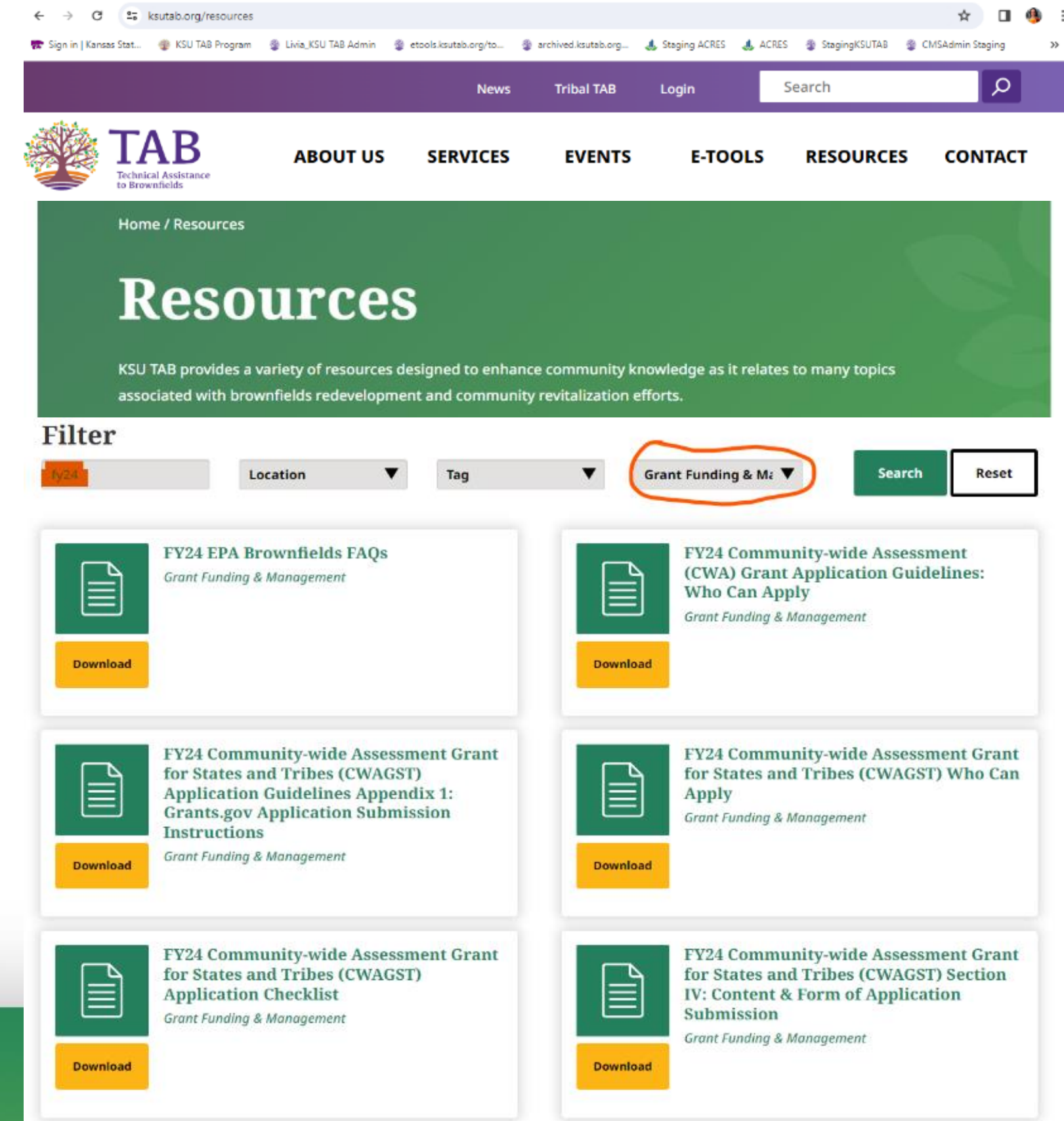
Next

[Add Comment](#)



Additional TAB Grant Writing Resources

- Grant Resources
 - <https://www.ksutab.org/resources>
 - Type 'fy24' in the Filter text box
 - Select Grant Funding & Management for the category
 - Guidelines, FAQs, etc., Sample successful grant applications
- Conduct draft application reviews
 - Request 1-2 weeks notice that a proposal will be submitted for review
 - Review and feedback typically occurs in 3-4 days
- Webinars and Workshops
(<https://www.ksutab.org/events>)



Other Resources

State and Federal

- Targeted Brownfields Assessments
 - Phase I Environmental Site Assessments
 - Phase II Environmental Site Assessments
- State Cleanup Funds
- EPA Competitive Assessment and Cleanup Grants
- EPA – Land Revitalization Technical Assistance
 - community visioning and engagement
 - site design
 - market studies
 - project financial planning





TAB
Technical Assistance
to Brownfields

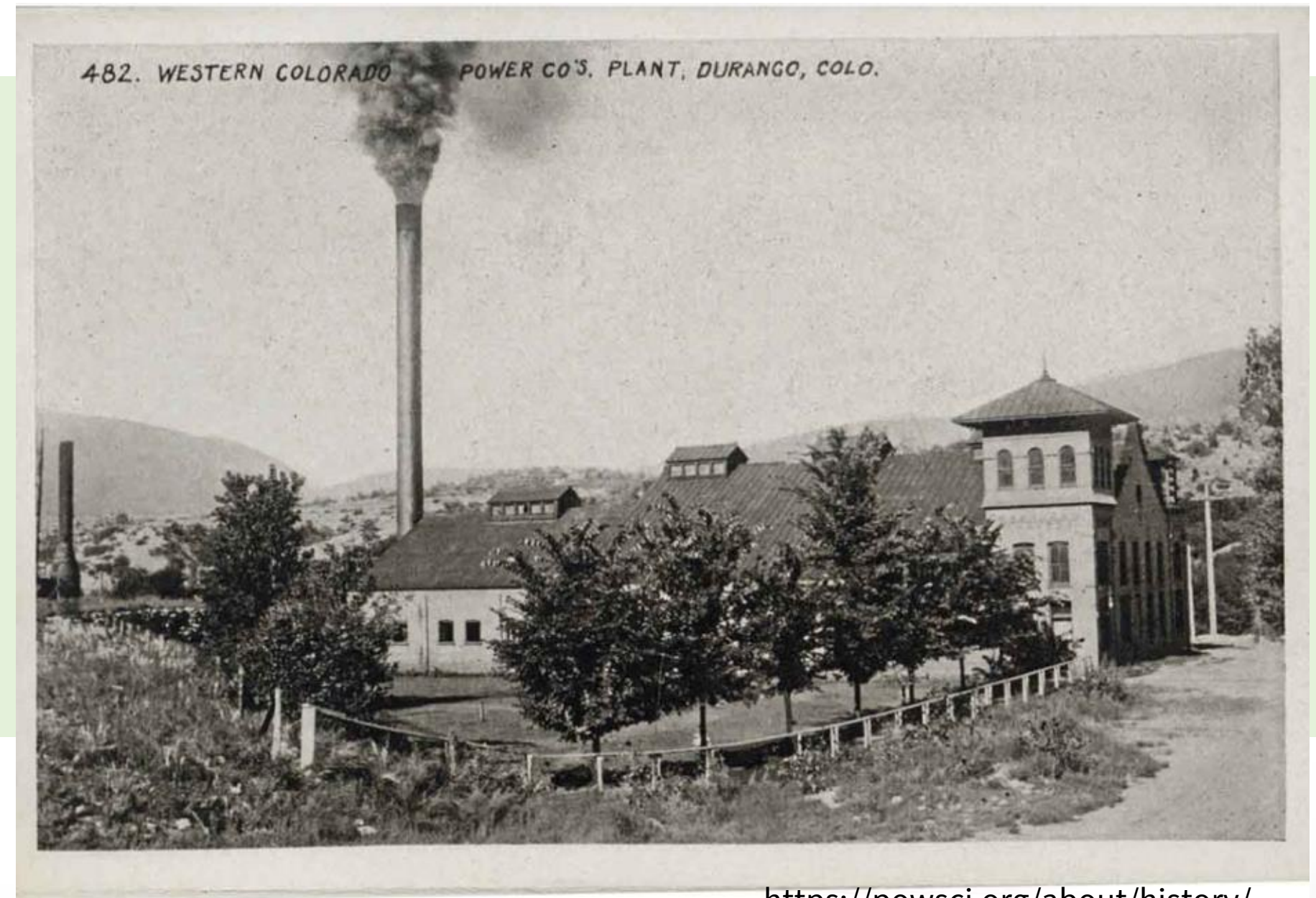
KANSAS STATE
UNIVERSITY

Powerhouse Science Center Durango, CO

Durango Powerhouse

Historic Downtown Durango, CO

- Constructed in 1893
- Oldest standing alternating current (AC) coalfired power plant in the world
- Converted to gas-fired in the mid-1940's
- Shutdown in the mid-1970's
- 8,000 sf plant on 3 acres

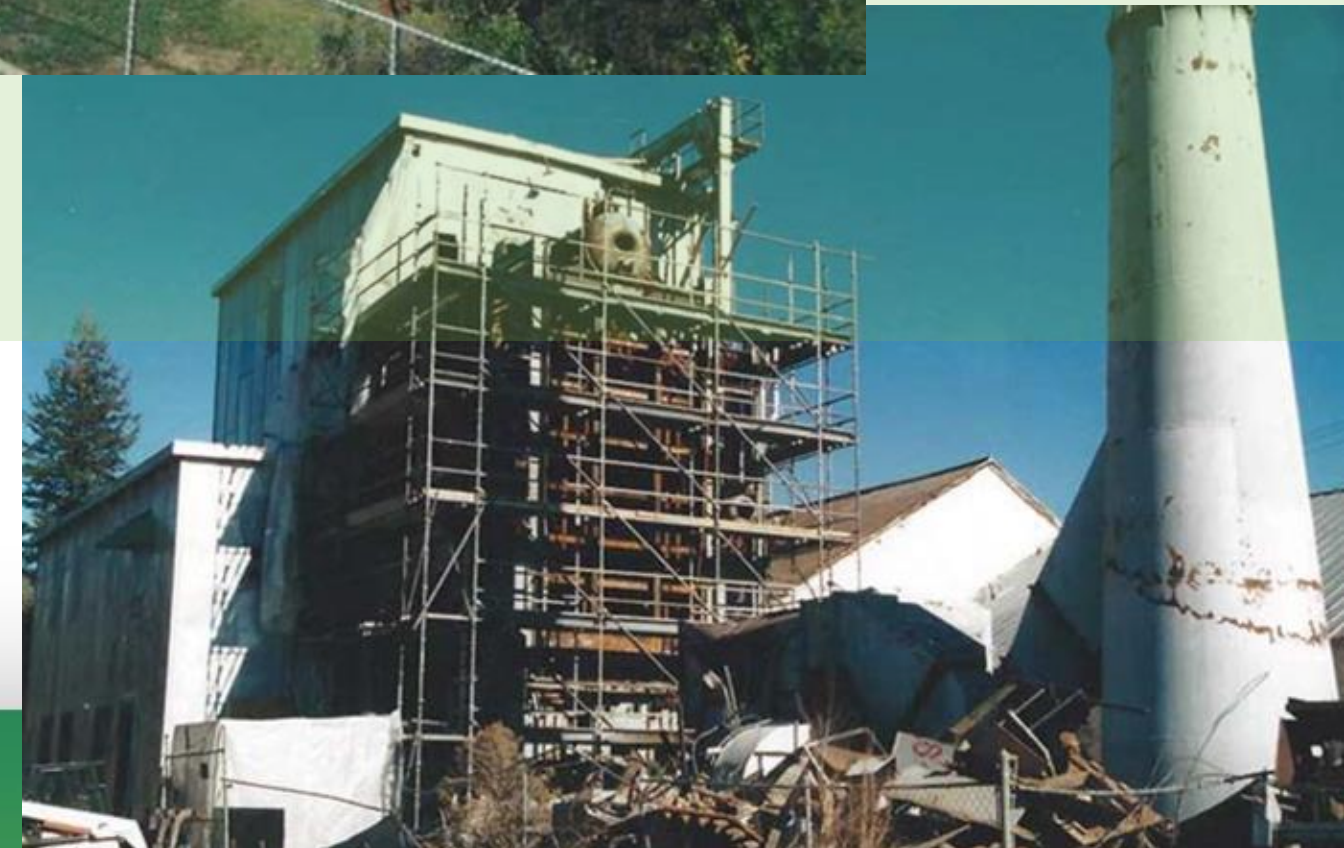


<https://powsci.org/about/history/>

Durango Powerhouse

Historic Downtown Durango, CO

- Purchased by the City in the mid-1990's
- Environmental Challenges*
 - Asbestos & pigeon waste
 - Visible remnants of coal & byproducts
 - Radioactive tailings & petroleum soil contamination from nearby sites



Powerhouse Science Center



<https://powsci.org/programs/>



- 2002 - Children's Museum submitted a proposal for converting the plant into an interactive science museum
- City passed a resolution to support restoration and transformation
- Volunteers led an effort to raise money and apply for grants

Powerhouse Science Center



<https://powsci.org/visit/>

- State Brownfields Program = \$135,000
 - \$45K TBA & \$90K cleanup (asbestos and soil removal)
- Private & Public = \$2 million
 - \$100K Gates Family Foundation & \$50K BP America (solar equipment)
- 2006 – brownfields remediation and exterior renovation was complete

Powerhouse Science Center



<https://powsci.org/visit/>

- 2011 Feb the museum opened
 - 2015 – Powerhouse Science Center
- Economic Impact***
- Jobs created = +32
 - Attracts 20k+ visitors /year
 - Estimated sales tax increase = \$5k annually
 - Increased property value of \$56,430

Clarksville, IN

-
1. OUTDOOR ADVENTURE CENTER
2. INDUSTRIAL MEADOW
3. BATHHOUSE PAVILION
4. BUTTERNUT BOARDWALK
5. EVENT CENTER
6. RIVER WALK OVERLOOK
7. BUFFALO TRACE LAWN
8. RATE CAMP LAWN
9. LEWIS & CLARK GATEWAY
10. CLARK BLVD GATEWAY
11. PATTERSON AVE
- QUARRY POND
- BUFFALO TRACE PARKWAY
- BUFFALO TRACE CORPORATE CENTER

A PROJECT OF

RIVER HERITAGE
 CONSERVANCY

<https://www.originpark.org/about-the-park>

Origin Park

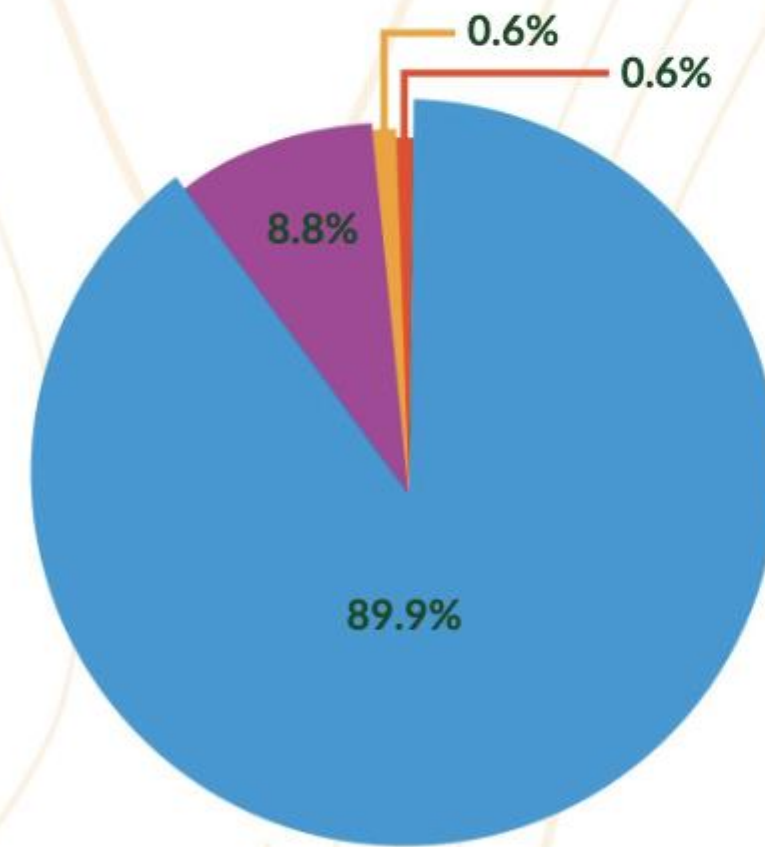
Clarksville, IN

- 2020 (FY 2021) Awarded a US EPA Brownfields Multipurpose Grant
- 2022 = reached 2/3 of their capital campaign goal

2022 FINANCIALS

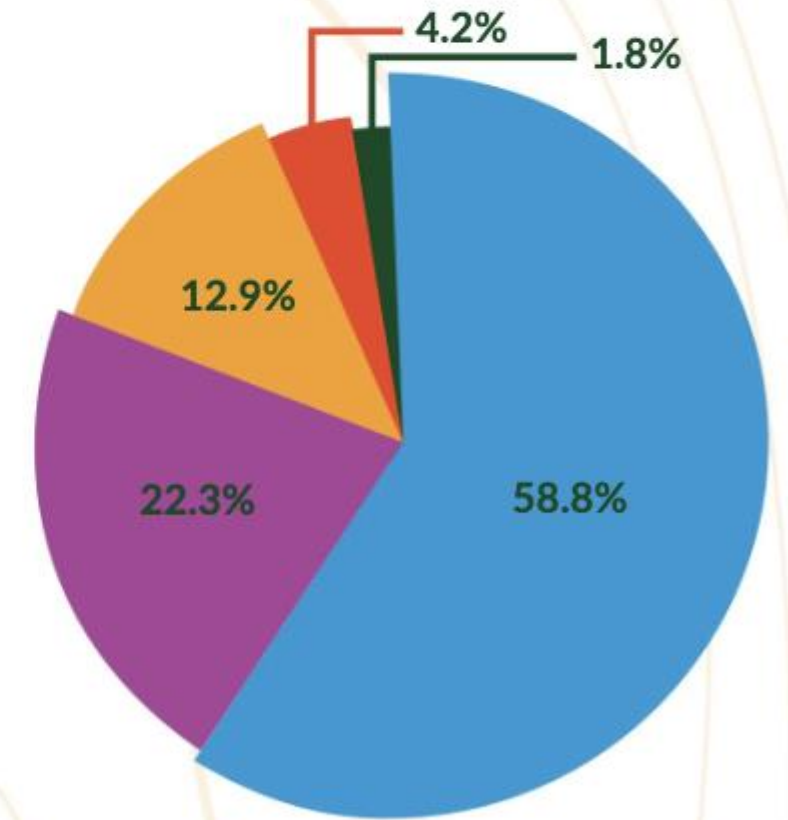
Revenues

- Grants — \$5,594,472
- Corporate Contributions — \$563,000
- Individual Contributions — \$58,864
- Interest Income — \$39,858



Disbursements

- Construction in Progress — \$1,395,904
- Program Expenses — \$528,965
- Management & General — \$305,108
- Fundraising — \$99,597
- Purchase of Land and Equipment — \$43,370



Net Revenues over Expenses
\$5,330,891

Requesting KSU TAB Assistance

- Contact us or Answer a call for....
- We'll set up a meeting to discuss assistance needs
- Review needs and TAB capability
- Agree on a course of action
- Get started



Maggie Belanger

Senior Director & Regional Director for EPA Region 8

maggiejessie@ksu.edu

784.532.0782



TAB
Technical Assistance
to Brownfields

KANSAS STATE
UNIVERSITY

Thank You

Questions for our panelists?

Please share your questions in Q & A

A banner image showing a landscape with green hills, mountains in the distance, and a utility tower on the right. Two large red smoke plumes are rising from the foreground. The text 'The BRECC National Network' is in the top left, with 'connecting coal communities' below it.

**The BRECC
National Network**
connecting coal communities

Save the Date! BRECC National Network

Powerful Partnerships: How Coal Communities and Utility Companies are Working Together / July 25, 2024, 2 pm ET