



BUILDING RESILIENT
ECONOMIES *in*
COAL COMMUNITIES

COUNTIES
FOR **CAREER
SUCCESS**

Boosting Career Opportunities in Coal and Manufacturing Communities

January 18, 2024



The BRECC National Network

connecting coal communities

BRECC is operated by the National Association of Counties using Federal funds under award ED22HDQ3070080 from the Economic Development Administration, U.S. Department of Commerce. The statements, findings, conclusions, and recommendations are those of the author(s) and do not necessarily reflect the views of the Economic Development Administration or the U.S. Department of Commerce.



**BUILDING RESILIENT
ECONOMIES *in*
COAL COMMUNITIES**



COUNTIES *FOR CAREER* *SUCCESS*

An initiative for county leaders interested in streamlining pathways to quality jobs and supporting learners along the way.



TODAY'S AGENDA

01

Introduction to American
Manufacturing Communities
Collaborative

02

Reskilling our
county Workforce

03

Upskilling our
county workforce

04

U.S. Department
of Labor

05

Q&A



NATIONAL
ASSOCIATION
of COUNTIES **NACo**

BUILDING RESILIENT
ECONOMIES *in*
COAL COMMUNITIES

COUNTIES
FOR **CAREER
SUCCESS**



BUILDING RESILIENT
ECONOMIES *in*
COAL COMMUNITIES

COUNTIES
FOR **CAREER**
SUCCESS



Matt Bogoshian
Executive Director,
American Manufacturing Communities
Collaborative



The American Manufacturing Communities Collaborative

Leading a National Manufacturing Renaissance Bottom-up by Regional Stakeholders

Speakers:

Matt Bogoshian – Executive Director

David Van Siclen – Operations Director

Revitalizing U.S. Manufacturing is a Complex Challenge

How do we make smarter decisions in regions that produce better outcomes?



Prioritize Key Industries

- Defense
- Energy
- Transportation
- Agriculture
- IT/Communications
- Health

[WH report on priority industries](#)

6

Focus on Ecosystem Components

1. Workforce & Training
2. Research & Innovation
3. Infrastructure & Site Development
4. Supply Chain Support
5. Trade & International Investment
6. Operational Improvement & Capital Access

[More on the Big 6](#)



Toward Sustainable Development

- Economic competitiveness
- Social Equity and Inclusion
- Environmental Sustainability
- National Security

AMCC Sustainable Development Webinars:

- [DEI in Manufacturing](#)
- [Manufacturing and the Environment](#)
- [Cybersecurity and Manufacturing](#)

Revitalizing U.S. Manufacturing is a Complex Challenge

How do we make smarter decisions that produce better outcomes?



Prioritize Key Industries

- Defense
- Energy
- Transportation
- Agriculture
- IT/Communications
- Health

[WH report on priority industries](#)

6

Focus on Ecosystem Components

1. Workforce & Training
2. Research & Innovation
3. Infrastructure & Site Development
4. Supply Chain Support
5. Trade & International Investment
6. Operational Improvement & Capital Access

[More on the Big 6](#)



Toward Sustainable Development

- Economic competitiveness
- Social Equity and Inclusion
- Environmental Sustainability
- National Security

AMCC Sustainable Development Webinars:

- [DEI in Manufacturing](#)
- [Manufacturing and the Environment](#)
- [Cybersecurity and Manufacturing](#)

Revitalizing U.S. Manufacturing is a Complex Challenge

How do we make smarter decisions that produce better outcomes?



Prioritize Key Industries

- Defense
- Energy
- Transportation
- Agriculture
- IT/Communications
- Health

[WH report on priority industries](#)

6

Focus on Ecosystem Components

1. Workforce & Training
2. Research & Innovation
3. Infrastructure & Site Development
4. Supply Chain Support
5. Trade & International Investment
6. Operational Improvement & Capital Access

[More on the Big 6](#)



Toward Sustainable Development

- Economic competitiveness
- Social Equity and Inclusion
- Environmental Sustainability
- National Security

AMCC Sustainable Development Webinars:

- [DEI in Manufacturing](#)
- [Manufacturing and the Environment](#)
- [Cybersecurity and Manufacturing](#)

Revitalizing U.S. Manufacturing is a Complex Challenge

How do we make smarter decisions that produce better outcomes?



Prioritize Key Industries

- Defense
- Energy
- Transportation
- Agriculture
- IT/Communications
- Health

[WH report on priority industries](#)

6

Focus on Ecosystem Components

1. Workforce & Training
2. Research & Innovation
3. Infrastructure & Site Development
4. Supply Chain Support
5. Trade & International Investment
6. Operational Improvement & Capital Access

[More on the Big 6](#)



Toward Sustainable Development

- Economic competitiveness
- Social Equity and Inclusion
- Environmental Sustainability
- National Security

AMCC Sustainable Development Webinars:

- [DEI in Manufacturing](#)
- [Manufacturing and the Environment](#)
- [Cybersecurity and Manufacturing](#)



**AMCC has a history supporting
bottom-up approaches to regional
sustainable development.**

2
0
1
4

2
0
1
6

2
0
1
8
-
2
0
2
0

2
0
2
1

2
0
2
2
-
P
R
E
S
E
N
T



A New Federal Policy Model Emerges

The National Economic Council collaborates with an Interagency Working Group leading to the [Investing in Manufacturing Communities Partnership](#) (IMCP) program.

“The IMCP is designed to reward communities that demonstrate best practices in attracting and expanding manufacturing by bringing together key local stakeholders and using long-term planning that integrates targeted public and private investments across a community’s industrial ecosystem to create broad-based prosperity.” – EDA Fact Sheet (2013).

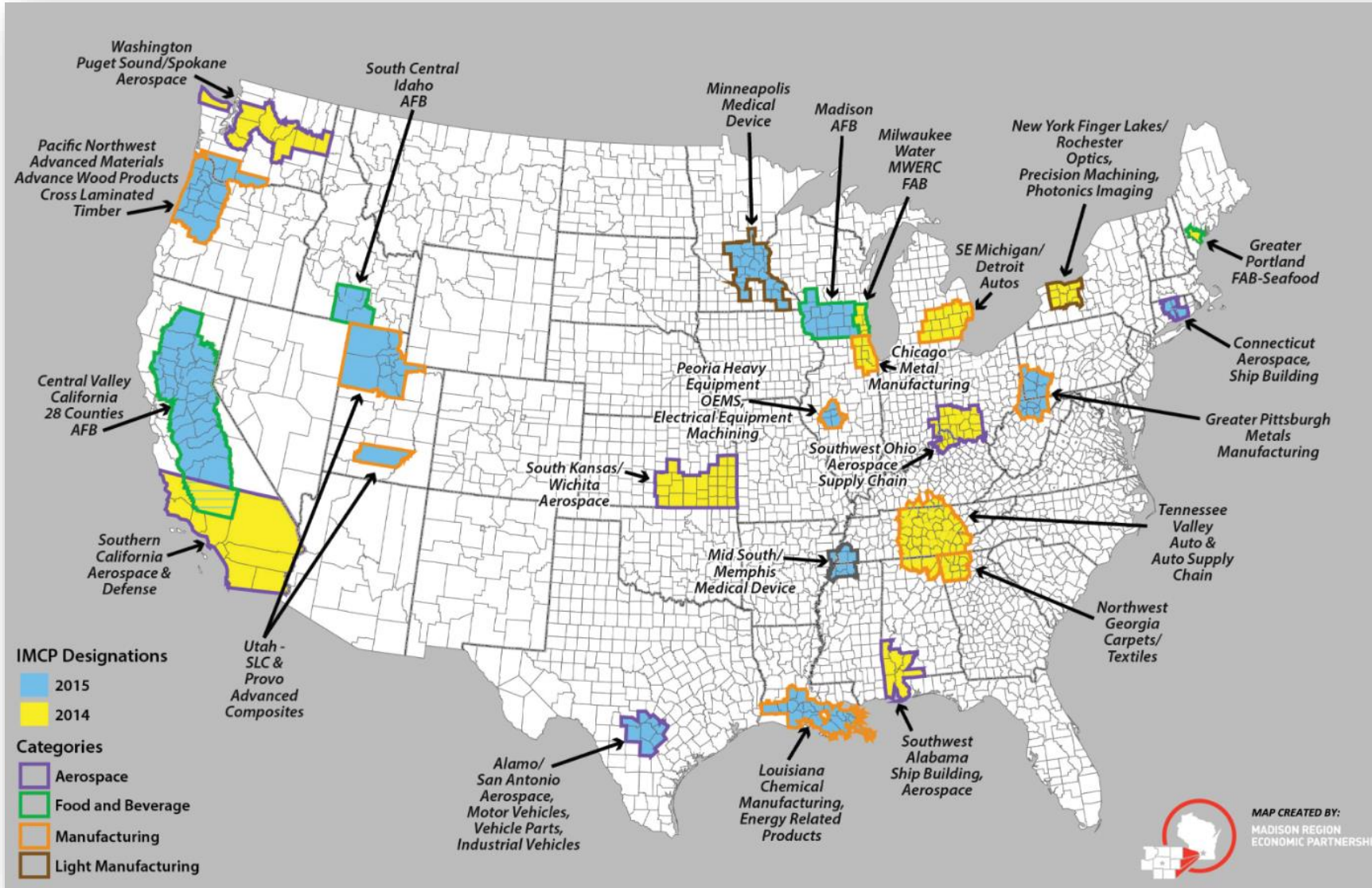
Communities meet rigorous selection criteria with 3 key elements:

1. Organize a diverse regional public/private backbone organization.
 2. Conduct a regional SWOT analysis.
 3. Create a regional plan that strengthens the Big 6 areas essential for a thriving manufacturing ecosystem: 1) Workforce and Training, 2) Research and Innovation, 3) Infrastructure and Site Development, 4) Supply Chain Support, 5) Trade & International Investment, and 6) Operational Improvement & Capital Access.
- **Over 70 US regions first apply for IMCP designations showing large demand**



24 Regions Designated as IMCP Communities in 2 Years

- Designation came with technical assistance, some preference for grants, branding
- Community of practice develops amongst the regions





IMCP Ends, but Bottom-up Leadership Persists

Regional consortia leaders double-down on collaboration:

- Stakeholders continue holding weekly national conference call meetings
- Regions interact with one another nationally, sharing best practices
- Public, private, and non-profit partners in regions increase collaboration
- Federal staff continue assisting the evolving IMCP network stakeholders

IMCP communities organize a national Summit in DC, leading to:

- Creation of a new non-profit backbone organization (AMCC)
- Outreach to Congress for the IMCP model to become law in DOD federal program (DMCSP)

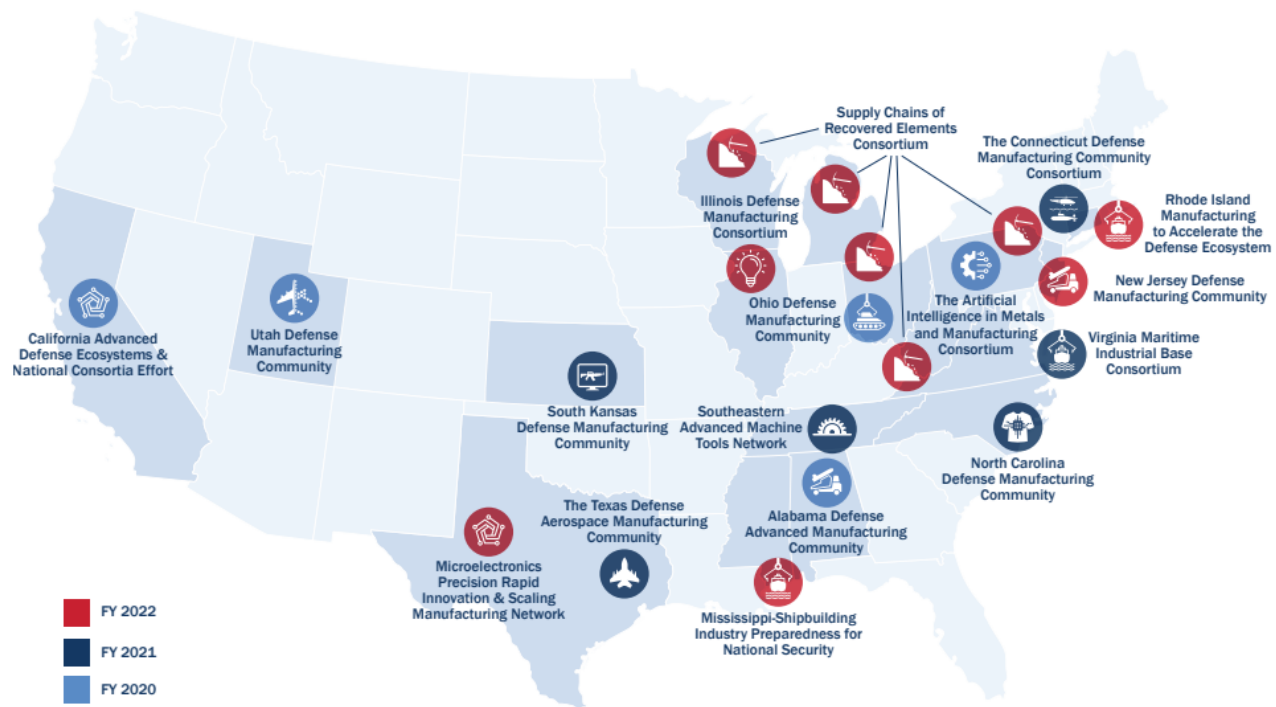


[AMCC regional consortia leaders advocate for DMCSP with the U.S. House Manufacturing Caucus \(2019\)](#)



IMCP Regions Pursue New Opportunities, Strengthen Collaborations

DMCSP Projects FY 2020 - 2022



Several IMCP regions receive designation and funding through DMCSP:

- 4 of 6 DMC designees in 2020 originated from IMCP
- 3 of 5 DMC designees in 2021 originated from IMCP
- 3 of 6 DMC designees in 2022 originated from IMCP

AMCC Undertakes Organizational Strategic Plan

Built by regional and national stakeholders to assist all American regions in adopting this bottom-up intervention approach.

Bottom-up Regional Development in Manufacturing is Driving the National Agenda

- Dept. Defense OLDCC Defense Communities
- Dept. Commerce EDA Build Back Better, Recompete Pilot Program, Tech Hubs
- National Science Foundation Regional Engines
- Dept. Energy LEAP Communities, EPIC Awardees, Industrial Assessment Centers
- Other Agency programs in Labor, USDA, SBA, Appalachian Regional Commission, and more!
- Supporting federal investments like NIST MEP network and DOD/DOE Manufacturing Innovation Institutes also working to enable success of programs

Regional Public-Private Partnerships: Difficult, but Doable!

- Finding the right composition of regional stakeholders
- Structuring accountable, communicative consortiums
- Measuring the outcomes of collaboration
- Communicating success and challenges
- Getting help to carry out the work



Regional Innovation: Federal Programs and Issues for Consideration

April 3, 2023

Congressional Research Service

[2023 CRS overview of federal regional innovation programs](#)



AMCC Designated As Nation's Manufacturing Community of Practice

Free, Open-Source, Evidence-Based Community of Practice seeking collaboration with:

- Designated Communities w/manufacturing focus
 - Other EDA Communities of Practice
 - Relevant federal investments, e.g. NIST MEP, Manufacturing USA Institutes
 - Relevant state, regional, philanthropic coalitions e.g. California's CERF regions
 - Other public and private BFFs e.g. CREC, ASBN, Connex, Accenture, Deloitte, Renewable Thermal Collaborative, Urban Manufacturing Alliance, National Governor's Association
-

Core activities:

- Weekly stakeholder calls, presentations, and newsletter
- Promotion of regional lessons learned via [Roadshows](#) and [Manufacturing An American Century](#) podcast
- Integration and stewardship with mfg stakeholders of all kinds; government, NGO, private etc.
- Development of Manufacturing Community Ecosystem Metrics (MCEM) project
- Supporting success and coordination among regional, place-based manufacturing policy initiatives.



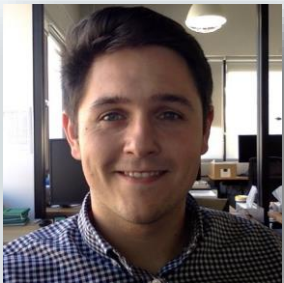
Advisory Board

Meet the AMCC Team



Matt Bogoshian – Executive Director

- Former U.S. Navy J.A.G. Officer
- Former local, state and federal enforcement and policy official
- Author, educator, and systems leader



David Van Siclen – Operations Director

- Background in nonprofit development
- Master's degree in Project Management at Georgetown Univ.
- AMCC's first intern circa 2018!

Regional Consortia:

- Impact Washington State MEP
- Wichita State University
- Connecticut Department of Economic and Community Development
- Utah Advanced Materials & Manufacturing Initiative (UAMMI)
- Cook County, Illinois Bureau of Economic Development

Founding Partners:

- Northeast-Midwest Institute
- The Century Foundation

Advisors:

- Phil Singerman, Performance Measurement
- Nikhil Kalathil, Ecosystem Assessment
- Sarah Lee, Capital Access
- Matthew Fieldman, Workforce & Training

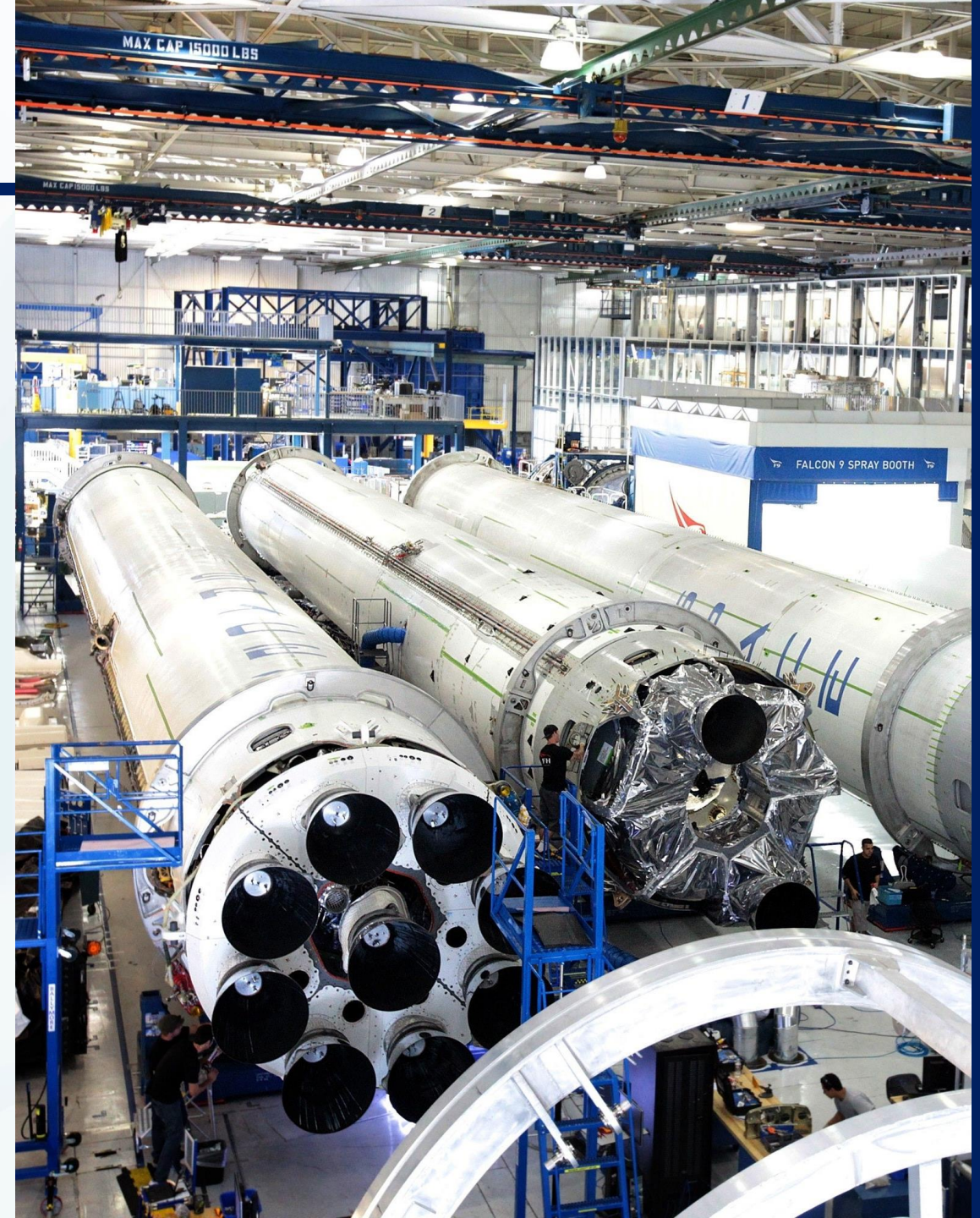
AMCC's mission is to create and strengthen an alliance of communities with regional economic development initiatives underway dedicated to achieving sustainability through economic growth, improved environmental performance, and inclusive well-paid job creation within a revitalized American manufacturing base.





Participate in AMCC!

- Join our **consistent, weekly 30-minute national Monday call** to get connected with public/private stakeholders from across the nation! (message David to be added)
- Explore americanmcc.org
- Get our **consistent, weekly newsletter updates** at americanmcc.org/subscribe
- Chat with us today on how we can add value to your work
- Learn more about our [Roadshows](#) and [Manufacturing An American Century](#) podcast.
- Contact us by email:
matt.bogoshian@amccmail.org
david.vansiclen@amccmail.org





BUILDING RESILIENT
ECONOMIES *in*
COAL COMMUNITIES

COUNTIES
FOR **CAREER**
SUCCESS



Curt Oldfield
President,
Spoon River Community College



BUILDING RESILIENT
ECONOMIES *in*
COAL COMMUNITIES

COUNTIES
FOR **CAREER**
SUCCESS

Spoon River College:

<https://prezi.com/view/eKDoMDhMLCbyRkqHWj6e/>



BUILDING RESILIENT
ECONOMIES *in*
COAL COMMUNITIES

COUNTIES
FOR **CAREER
SUCCESS**



Jenniffer McCloskey
*Director of Workforce Development,
Saratoga County, N.Y.*



UPSKILLING SARATOGA COUNTY WORKFORCE

By Jenniffer McCloskey – Director Saratoga County Workforce Development



- ❖ Director for Saratoga County Workforce Development
- ❖ Representative of Counties for Career Success (C4CS). A cohort of eight counties across the nation sharing ideas and resources to upskill our local workforces.



AGENDA

- Geographic / economic context of Saratoga County, N.Y.
- Partnerships
- County efforts to support development of transferable skills
- Take home message



Geographic / Economic Context of Saratoga County, N.Y.

- Located in upstate New York, just north of the state capital of Albany.
- With a population just about to hit 250,000, Saratoga County is the fastest growing County in upstate NY.
- Population centers along the interstate that dissects the county through the middle.
- Rural populations removed from the interstate face many barriers to employment and less opportunity.
- Disparity based on education and location within the county.



PARTNERSHIP

Partnerships between industry and Post-Secondary education

- State University of NY (SUNY) Adirondack and Global Foundries
- BOCES Machine Tool program and local manufacturers

Partnerships to enable career exploration and industry introduction to county youth

- Career Jam
- Advanced Manufacturing Early College Academy
- SUNY Adirondack Manufacturing Day



COUNTY EFFORTS

Childcare

- In-home licensed day care for childcare deserts
- Child care for shift work

Transportation

- Increase public transportation in outlying areas
- Flexible and on-demand transportation to employment hubs

Career Pathways

- Identify and fund programs that include credentials and concrete pathway to growth
- Educate our youth and parents on the benefits of trades and “non-traditional” opportunities





SARATOGA
COUNTY **NEW**
YORK

Department of Workforce Development

THANK
YOU

Jenniffer McCloskey

Director

*Department of Workforce
Development*

JMcCloskey@saratogacountyny.gov

(518) 884 - 4901



BUILDING RESILIENT
ECONOMIES *in*
COAL COMMUNITIES

COUNTIES
FOR **CAREER
SUCCESS**



Molly Bashay
***Senior Policy Advisor,
Employment and Training Administration,
U.S. Department of Labor***

Boosting Career Opportunities in Coal and Manufacturing Communities

January 18, 2024



Molly Bashay, Senior Advisor
Employment and Training Administration
Bashay.molly.m@dol.gov



Investing in America: A historic opportunity for workforce system

- **Bipartisan Infrastructure Law: \$1.2 trillion** in total funding over ten years to modernize infrastructure through extensive upgrades for roads, bridges, ports, rail, and transit systems, building out broadband, developing electric vehicle infrastructure, replacing lead pipes, remediating pollution and more.
- **CHIPS and Science Act: \$280 billion** over the next ten years for semiconductor scientific research and development, commercialization, and manufacturing, including over \$50 billion for manufacturing, R&D, and workforce development, with another \$24 billion worth of tax credits for chip production
- **Inflation Reduction Act: Nearly \$400 billion** to substantially lower the nation's carbon emissions by the end of this decade through clean energy investments delivered through a mix of tax incentives, grants, and loan guarantees for clean electricity and transmission, clean transportation, including electric-vehicle (EV) incentives, and more.



The Approach: A workforce system framework to meet the moment

Places



Pathways



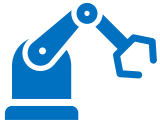
Programs



Job Quality & Equity



Investing in America: A historic opportunity for workforce system



Strengthening Community Colleges Training Grants

- \$50M in grants to 15 colleges/consortia in 14 states
- Builds community college capacity to deliver equitable training access to meet employer and worker skill development needs for in-demand jobs
- Round 4 awards expected Spring 2024



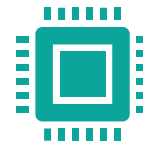
Women in Apprenticeship and Non-traditional Occupations (WANTO)

- \$5M in awards to organizations in 7 states increasing the number of women in Registered Apprenticeship
- Builds community-based org capacity to prepare and support women for careers in construction, advanced manufacturing, energy, IT and transportation



Critical Sectors Job Quality Demonstration Grants

- \$16M in grant awards to organizations in 12 states piloting strategies to improve job quality
- Designed to increase availability of good jobs in care, climate resiliency and hospitality sectors



Advanced Manufacturing Apprenticeship Sprint

- Commerce, DOL and White House partnering to expand and diversify pathways into good jobs and careers in advanced manufacturing
- Working to ensure a diverse and robust workforce ready to lead America's manufacturing renaissance



Investing in America: A historic opportunity for workforce system



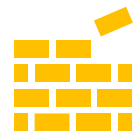
Workforce Opportunities for Rural Communities (WORC) Initiative

- \$44M to 32 organizations supporting employment and economic mobility for underserved rural populations
- Partnership between Appalachian, Delta and Northern Border Regional Commissions
- New funding announcement expected Spring 2024



Good Jobs Great Cities Academy

- 16 cities innovating scalable solutions that upskill and reskill workers
- Forging cross-sector partnerships to build strong on-ramps into in-demand infrastructure occupations for workers facing barriers to career success



Building Pathways to Infrastructure Jobs Grants

- \$94M in awards to 34 public-private partnerships supporting IIA worker-centered sector strategies
- Develops / scales training programs that prepare job seekers for career pathways in broadband, advanced manufacturing, renewable energy, and transportation



Job Corps Infrastructure Academies

- 120+ centers and 43 nationally accredited training pathways in advanced manufacturing, construction, renewables and energy, and transportation
- Nationwide reach to introduce young people ages 16-24 to infrastructure jobs and lifelong careers

Boosting Career Opportunities in Coal and Manufacturing Communities

January 18, 2024



Molly Bashay, Senior Advisor
Employment and Training Administration
Bashay.molly.m@dol.gov

February 1, 2024 | 2:00 - 3:00pm EST
***Economic Transition Strategies from Coal
Communities Across the Globe***

Please join our next National Network Webinar!



Thank You!

Questions for our panelists?

Please share your questions in Q & A



NATIONAL
ASSOCIATION
of COUNTIES **NACo**

BUILDING RESILIENT
ECONOMIES *in*
COAL COMMUNITIES

COUNTIES
FOR **CAREER
SUCCESS**