

RURAL IMPACT COUNTY CHALLENGE

Monthly Webinar Series

October 27, 2016

www.NACo.org/RICC

2017 Community Coaching Award Winners

County

Athens County, Ohio
Bladen County, N.C.
Blair County, Pa.
Coconino County, Ariz.
Curry County, Ore.
Dinwiddie County, Va.
Freeborn County, Minn.
Garrett and Allegheny Counties, Md.
Pottawattamie County, Iowa
Washington County, N.Y.
Washington County, Va.
Weber County, Utah

Coach

Jan O'Neill
Aliana Havrilla
Jerry Spegman
Janna West Kowalski
Jerry Spegman
Mary Bennett
Jan O'Neill
Aliana Havrilla
Janna West Kowalski
Jerry Spegman
Mary Bennett
Aliana Havrilla

2016 Rural Action Caucus Symposium

*Leon County (Tallahassee), Florida
December 7-9*

ConnectED
INITIATIVE



Monthly Webinar Series

October 27, 2016

What is ConnectED?

- Launched in 2013 to connect 99% of students to high-speed Internet in the classroom by 2018 and empower students and teachers through more personalized digital learning.
- Pillars of ConnectED:

Connectivity

- ✓ 20M additional students connected
- ✓ Halved per-megabyte cost schools incur

Teacher Professional Development

- ✓ Over 2K district leaders trained on leveraging education technology

Devices

- ✓ 1M devices from Sprint
- ✓ Verizon, Apple commitments

Digital content

- ✓ 5M students benefiting
- ✓ 6,000+ popular eBooks for students in low-income schools

Leveraging the power of digital learning: Piedmont City School District

- Rural Alabama school district provides devices to every student, customizing learning to suit varying student levels and styles
- Partnered with local government and cable provider to create always-available internet at school and at home
- Family members and parents of students report using home access to apply for jobs and take online courses
- Piedmont students in a blended learning environment have shown **.29 grade level increases in academic growth in reading and math**, compared to control
- District composite **ACT scores have gone from below to above the state average** since the introduction of the school's mPower ed-tech program
- In 2014-15, **95 percent of Piedmont students graduated**, putting it in the top 5 percent in the state.



Fast Facts

Type of School	% Low-Income	Geography	Future Ready
District-wide	68%	Rural	Y

” Piedmont could easily be just another one-red-light town that lost everything. What this technology initiative has done for our town is it's brought more interest into the schools. It's brought people into the community, and hopefully at some point in time, it will help to attract some industry back to Piedmont.

--Allan Mauldin, U.S. History Teacher

Mooresville Graded School District

- Each student grades 4-12 receives a MacBook Air to use in and out of school
- District conducts summer institutes to assist teachers with integrating technology in their classrooms. Between 85% and 92% of teachers participate voluntarily
- The district's graduation rate has improved from **77% in 2007 to 89% in 2014.**
- In the 2013–14 school year, the District was **rated first in North Carolina on** end-of-grade state reading and math assessments
- Measurable outcomes include **improved test scores in reading, math, and science**, increased attendance, and lower spending to realize their gains compared to other North Carolina school districts.
- Graduating seniors have **more than tripled scholarship dollars received** and **college enrollment has increased 15 percentage points**



It gives teachers the ability to see in real time what students need help, who is falling behind, and then offer extra help. If you've already mastered a lesson, you can move on to the next one. So as one teacher said, 'The thing I'm most proud of is not the technology, it's the relationships I can build with the students that I teach.'

--President Barack Obama

Fast Facts

Type of School	% Low-Income	Geography	Future Ready
District-wide	38%	Suburban	Y

Resources

- **Broadband Connectivity**
 - Vast majority of resources through E-rate/USAC (\$3.9 billion available annually)
 - New Rules in place allow for:
 - Wi-Fi
 - Self-provisioning
 - Use of “dark fiber”
 - State matching funds
- **Free ConnectED Corporate Resources (WH.gov/ConnectED)**
 - Software: Autodesk, Adobe, Esri, & Microsoft
 - eBooks: OpenEbooks.net & O’Reilly Media
 - Hardware: Sprint & Verizon
 - Mobile Broadband: Sprint & Verizon
- **Future Ready Network**
 - Opportunity to support superintendents
 - FutureReady.org

Contact us

Colin Rogister, White House National Economic Council,
Colin.Rogister@ed.gov

Chad Maisel, White House Domestic Policy Council,
CMaisel@omb.eop.gov



United States
Department of
Agriculture

Rural Development



David Lipsetz
Rural Housing Service
U.S. Department of Agriculture

- Multi-Family Housing Portfolio Data (Sections 514/515 and 538): www.Data.gov
- Multi-Family Housing Property Exit Data: www.Data.gov
- Property Preservation Tool: <http://tabsoft.co/2eBQVvw>
- PolicyMap: www.PolicyMap.com
- Multi-Family Housing Comprehensive Property Assessment: www.rd.usda.gov/publications/reports

Expiring USDA Multi-Family Properties in Zip Codes with High Child Poverty, Curry County, OR

Project Name: LAKESIDE GARDEN APT
Address: 1534 ARIZONA ST.
City State Zip: PORT ORFORD, OR 97465
Units: 12
Project Type: Family
Date of Operation: 1981
Tenants: 21
Avg. Annual Income: \$7,326
Female Head-of-Household: 8
Designated Minors: 8
Estimated Property Exit Year: 2030

Percent People Under 18 in Poverty
Year: 2014
Shaded by:
Zip Code Tabulation Area, 2010

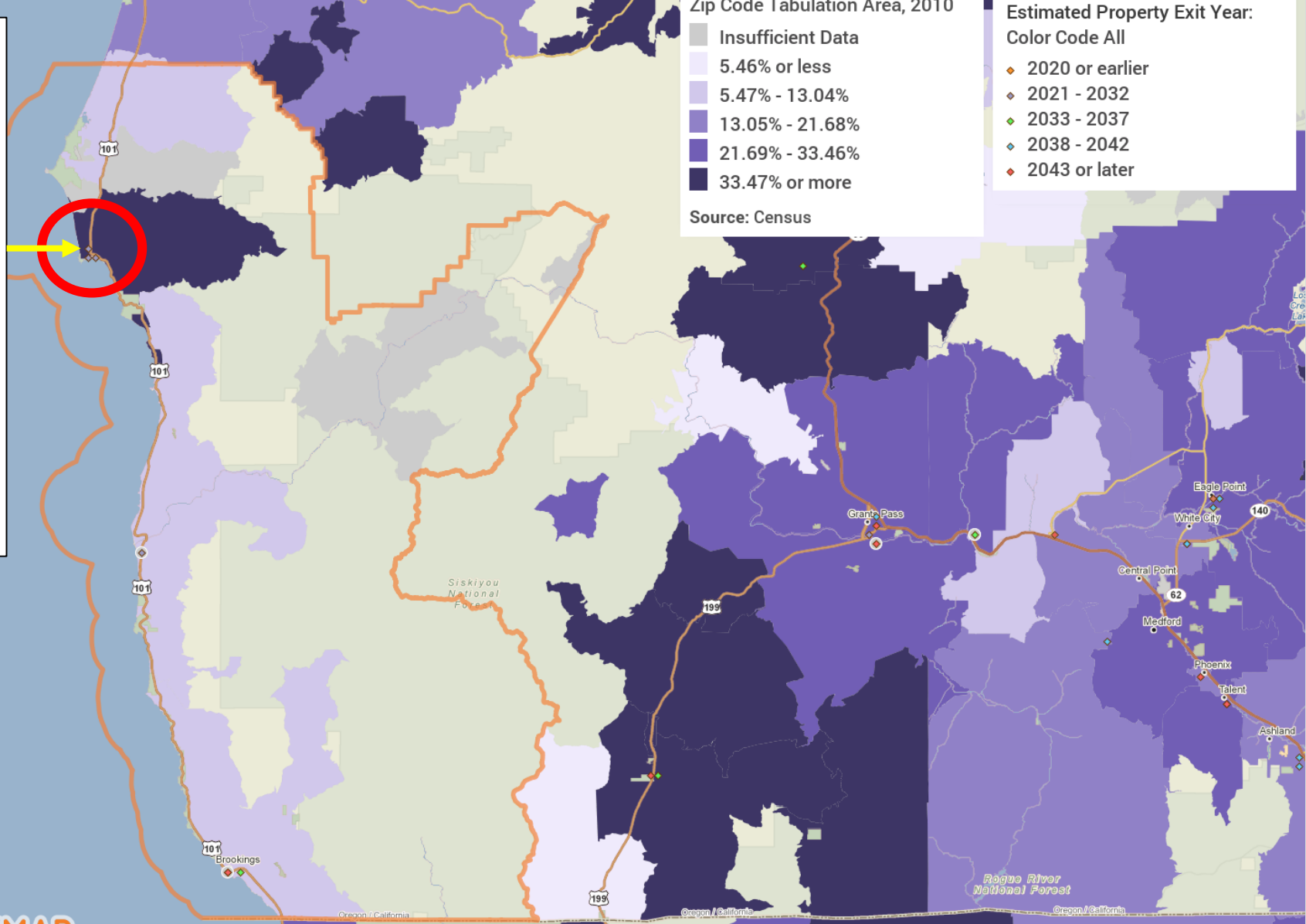
- Insufficient Data
- 5.46% or less
- 5.47% - 13.04%
- 13.05% - 21.68%
- 21.69% - 33.46%
- 33.47% or more

Source: Census

Section 515 Rural Rental Multifamily
Source: USDA RHS

Points filtered by:
Estimated Property Exit Year:
Color Code All

- 2020 or earlier
- 2021 - 2032
- 2033 - 2037
- 2038 - 2042
- 2043 or later



Expiring USDA Multi-Family Properties in Zip Codes with High Child Poverty, Wise County, TX

Percent People Under 18 in Poverty
Year: 2014
Shaded by: Census Tract, 2010

- Insufficient Data
- 5.27% or less
- 5.28% - 13.17%
- 13.18% - 23.31%
- 23.32% - 38.26%
- 38.27% or more

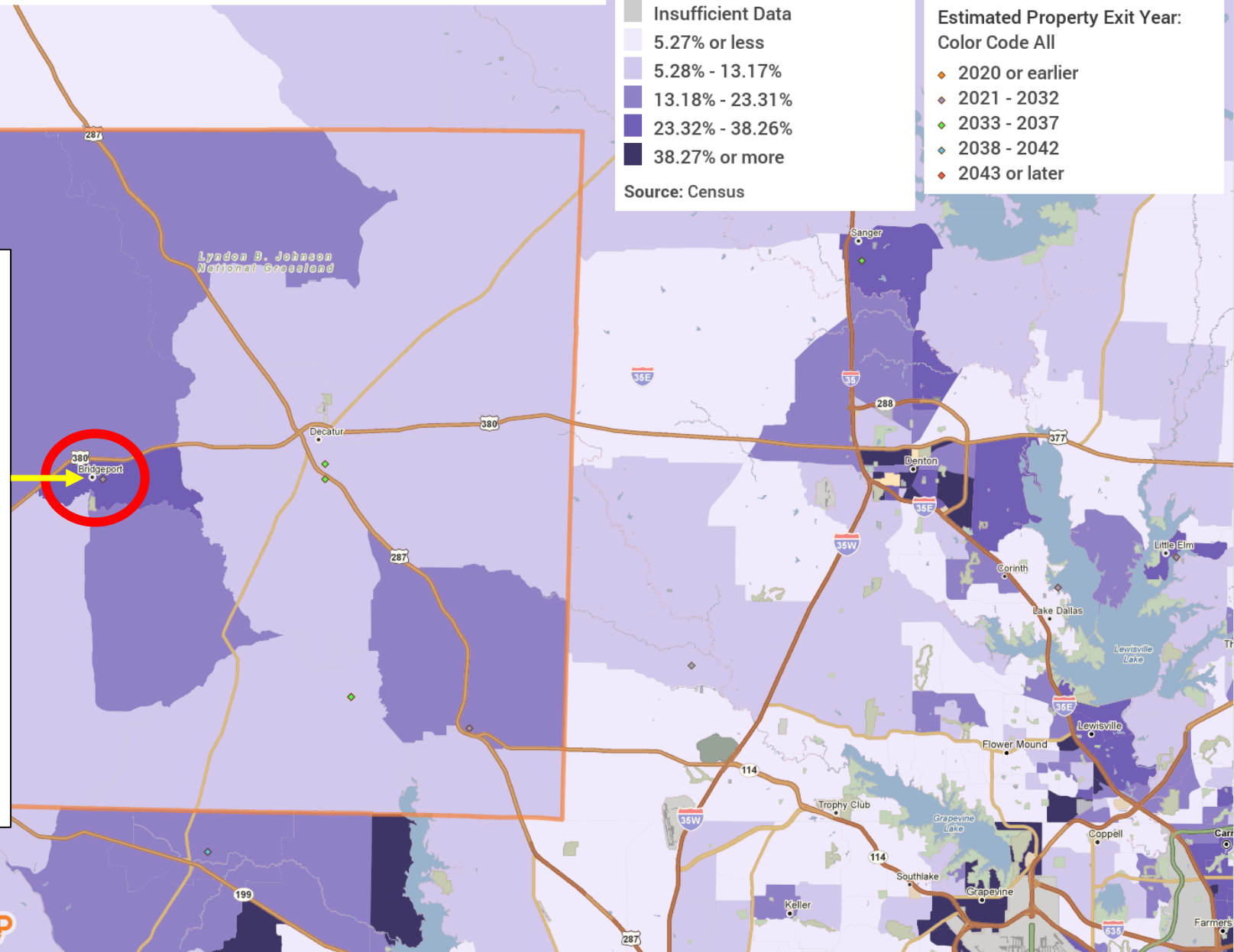
Source: Census

Section 515 Rural Rental Multifamily
Source: USDA RHS

Points filtered by:
Estimated Property Exit Year:
Color Code All

- 2020 or earlier
- 2021 - 2032
- 2033 - 2037
- 2038 - 2042
- 2043 or later

Project Name: HENDERSON TERRACE
Address: 1205 HENDERSON
City State Zip: BRIDGEPORT, TX 76426
Units: 24
Project Type: Family
Date of Operation: 1997
Tenants: 52
Avg. Annual Income: \$13,185
Female Head-of-Household: 18
Designated Minors: 26
Estimated Property Exit Year: 2032



RURAL IMPACT COUNTY CHALLENGE

Monthly Webinar Series

October 27, 2016

www.NACo.org/RICC