

Counties for Kids



National
Collaborative
for Infants
& Toddlers

www.countiesforkids.org



NATIONAL
ASSOCIATION
of COUNTIES
NACo.
© NATIONAL ASSOCIATION OF COUNTIES
RESEARCH FOUNDATION, INC.

Resources

The National Collaborative for Infants & Toddlers

THE ABCs OF PRENATAL-TO-THREE FOR COUNTY OFFICIALS

The daily decisions that counties make not only shape community conditions but often set a trajectory for success for their youngest residents. When infants are born healthy into safe and nurturing environments with parents who are well-supported, a whole community can benefit from improved social, economic and health outcomes.

County officials play a key role in helping young children to grow, learn and thrive – and to prioritize and promote the programs and policies necessary to support healthy development. If your county is just starting out or looking to expand upon existing efforts, this resource, “The ABCs of Prenatal-to-Three for County Officials,” offers policymakers a range of ideas for prioritizing investments that set young children up for success.

While there is no set process for advancing a prenatal-to-three agenda, the National Association of Counties (NACo) Research Foundation (NACoRF) has learned from counties across the nation about some of the most effective ways to get started. No matter where you are in your journey, NACoRF can support you by providing relevant information, connecting you to best practices and local leaders who have made meaningful progress.

QUESTIONS FOR COUNTY LEADERS TO CONSIDER

- **Is there strong leadership for infants and toddlers in your county?** One way county boards can demonstrate bipartisan community support for their youngest residents is through a public statement of support.
- **Does your county have an active early childhood stakeholder group?** Connecting to or convening a diverse stakeholder team can build broad-based community support and cultivate champions for young children. Counties may establish a new or identify an existing group that is committed to shared vision and developing a strategic plan of action for children from prenatal to age three. To further support their cross-sector stakeholder group, counties may explore opportunities for establishing a dedicated early childhood system coordinator to strategically drive initiatives in the community.
- **Does your county have a vision for improving outcomes for children that includes infants and toddlers?** Oftentimes, planning for school readiness begins at preschool or even earlier. County leaders can work with the early childhood stakeholder group to develop a shared vision and help to support the full continuum of a child's development by facilitating the integration of prenatal-to-three stakeholders and priorities within broader conversations around school readiness.

Prenatal-to-Three County Leader Toolkit



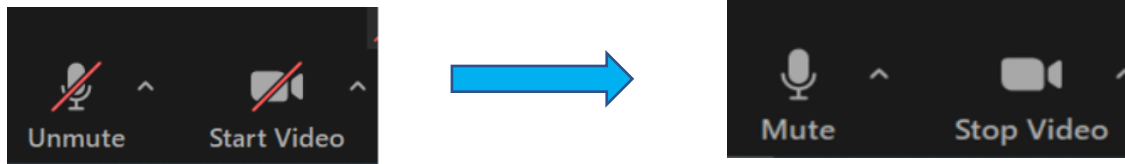
Counties Getting Started: A Prenatal-to-Three Guidebook



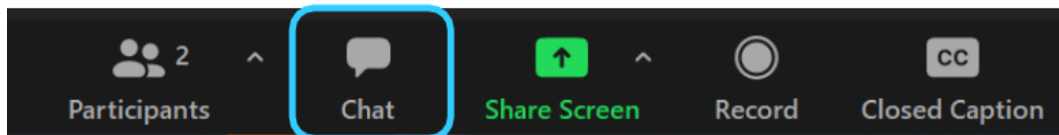
www.countiesforkids.org

Instructions

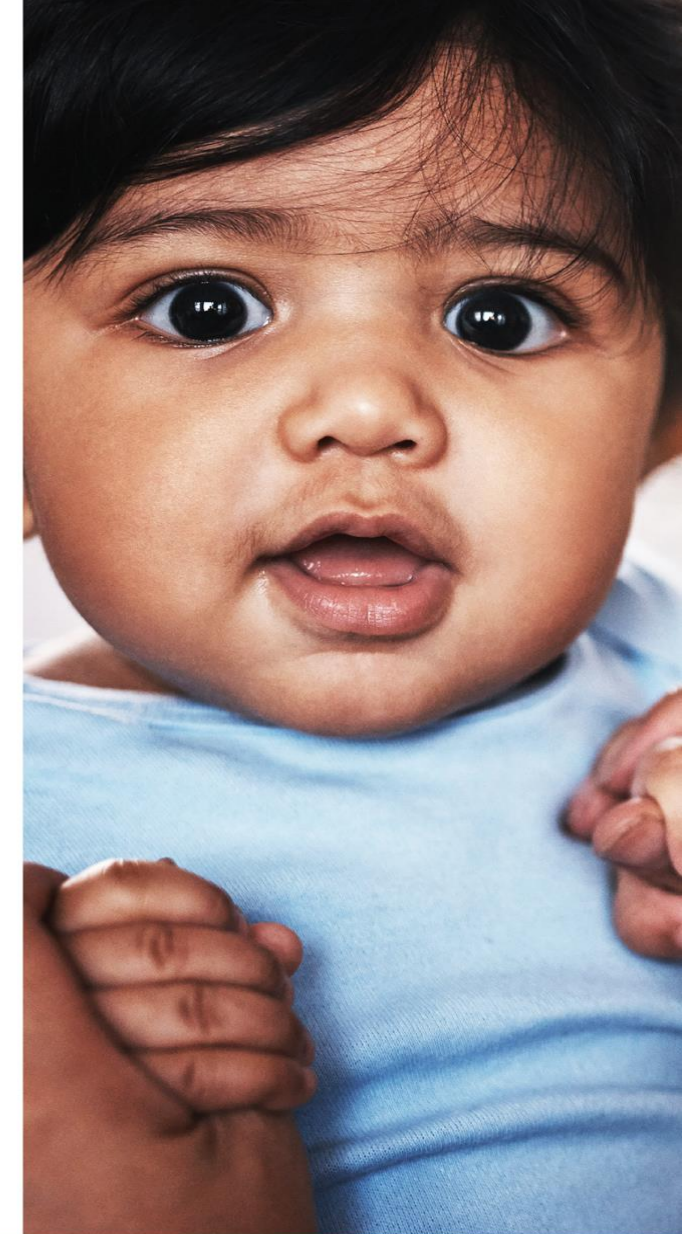
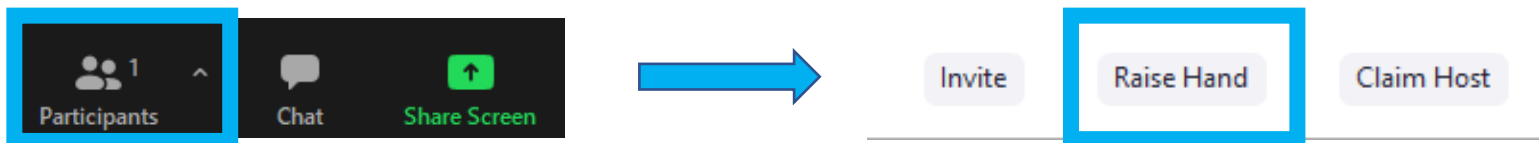
To mute/unmute and start/stop video:



To access the chat box:



To raise/lower your hand:



Agenda: PN-3 Peer Learning Network

- Welcome
- ARPA Overview
- Questions & Interactive Discussion
- Conclusion



COUNTIES MATTER FOR INFANTS AND TODDLERS

- Counties invest \$63 billion annually in federal, state and local funding in human services
- Administer key federal safety net programs serving young children:
 - [The Child Care and Development Fund \(CCDF\)](#) (in 8 states)
 - [The Social Services Block Grant](#) (9 states)
 - [Temporary Assistance for Needy Families \(TANF\)](#) (9 states)
 - [Supplemental Nutrition Assistance Program \(SNAP\)](#) (10 states)
- Serve as Head Start agencies or contribute local dollars to expand Head Start programs
- Function as clinic sites for the Special Supplemental Nutrition Program for Women, Infants and Children (WIC)
- Fully or partially oversee the child welfare system in 11 states
- Invest in core policies and services that align and strengthen PN-3 systems

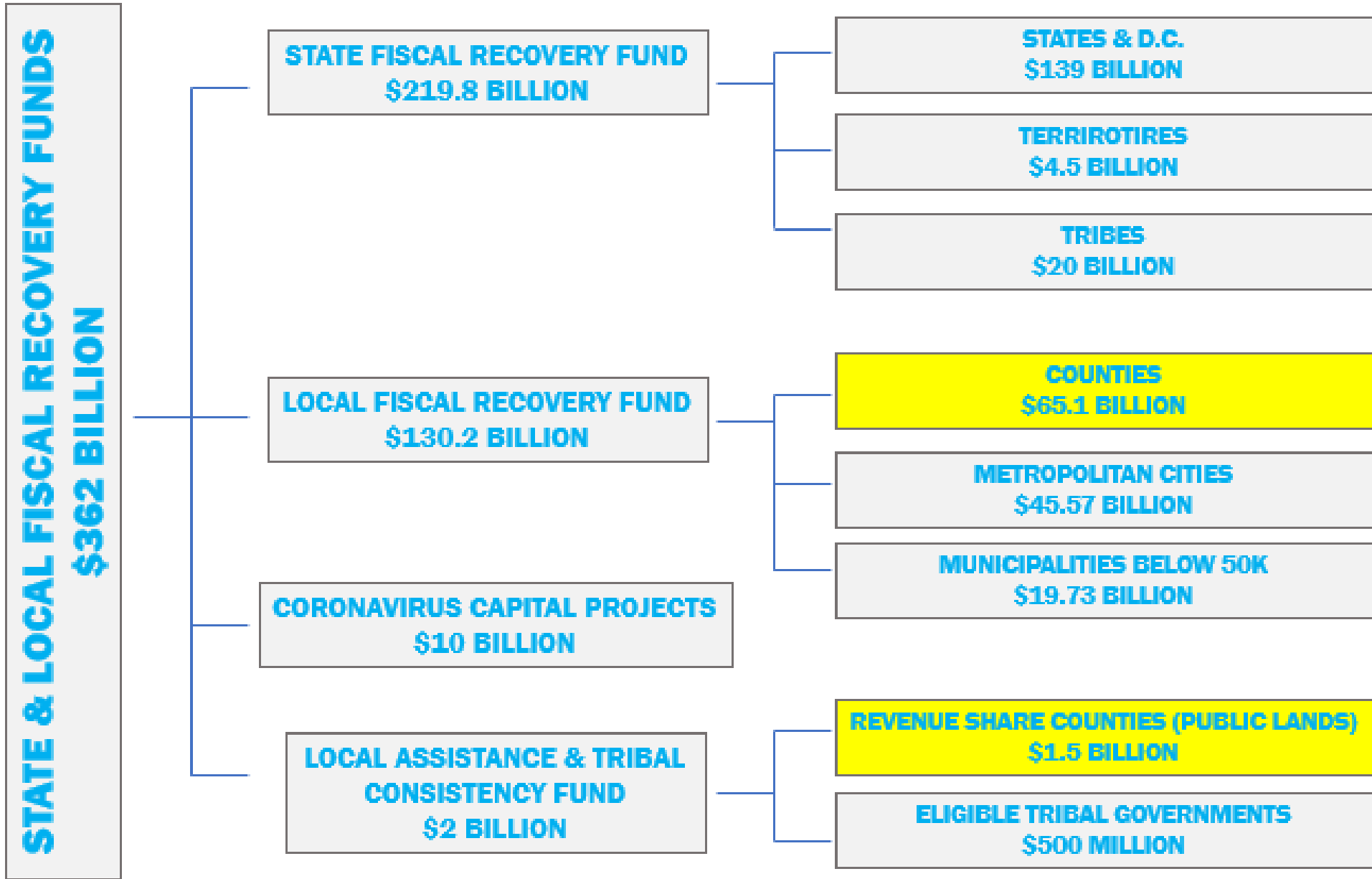
AMERICAN RESCUE PLAN ACT OF 2021

American Rescue Plan Act Funding Breakdown

This interactive tool helps navigate the roughly \$1.5 trillion in county related funding from the American Rescue Plan Act of 2021

[LEARN MORE](#)

- Counties will interact with various funding supports under the ARP
- [Click here](#) for NACo's interactive funding breakdown
- Most critical for counties: direct funding via the State & Local Fiscal Recovery Funds



ADDRESS NEGATIVE ECONOMIC IMPACTS

1

WORKERS & FAMILIES

- Assistance to unemployed workers and job training
- Food, housing, cash and other assistance to households (proportionate)
- Survivor's benefits for family members of COVID-19 victims

2

SMALL BUSINESS

- Loans and grants to mitigate financial hardship
- Loans, grants and in-kind assistance to implement COVID-19 prevention or mitigation tactics
- Technical assistance

3

PUBLIC SECTOR

- Rehire staff
- Replenish state unemployment insurance funds
- Administer economic relief programs

4

IMPACTED INDUSTRIES

- Tourism, travel and hospitality
- Other similarly affected sectors

PROVIDE EQUITY-FOCUSED SERVICES

1

ADDRESSING HEALTH DISPARITIES

- Community health workers and public benefits navigators
- Remediation of lead paint and other lead hazards
- Community violence intervention programs

2

HOUSING & NEIGHBORHOODS

- Services to support individuals experiencing homelessness
- Affordable housing development
- Housing vouchers, residential counseling, navigation assistance

3

EDUCATIONAL DISPARITIES

- New or expanded early learning services
- Expanded resources for high-poverty school districts
- Educational services like tutoring and afterschool programs

4

PROMOTING HEALTHY CHILDHOOD ENVIRONMENTS

- New and expanded high quality childcare
- Home visiting programs for families with young children
- Services for child welfare-involved families and foster youth

SUPPORT PUBLIC HEALTH RESPONSE

- **COVID-19 mitigation and containment:** includes schools, homeless facilities, residential foster care facilities, group living facilities and other congregate settings.
- **Behavioral healthcare:** includes services for mental health and substance misuse
- **Public health and safety staff:** payroll and covered benefit expenses for *employee's time spent mitigating or responding* to the COVID-19 public health emergency, including **human services** staff.

ADDRESS NEGATIVE ECONOMIC IMPACTS

- **Direct assistance to households:**
 - Proportionate cash assistance
 - Food assistance
 - Rent, mortgage, or utility assistance
 - Counseling and legal aid to prevent eviction or homelessness
 - Emergency assistance for burials
 - Home repairs, weatherization, or other needs
 - Internet access or digital literacy assistance

ADDRESS NEGATIVE ECONOMIC IMPACTS

- **Assistance to nonprofit organizations** that responds to the negative economic impacts of the COVID-19 public health emergency
- **Assistance to unemployed workers**, including job training
- **Survivor's benefits** for family members of COVID-19 victims

ADDRESS DISPARITIES

A wide range of services are eligible if provided to in/to [Qualified Census Tracts](#) (communities with high proportion of low-income) or communities with a **demonstrably disproportionate** economic or health outcome due to the pandemic. These include (but are not limited to):

- **Programs or services that facilitate access to health and social services**
 - Assistance accessing or applying for public benefits or services
 - Remediation of lead paint or other lead hazards
 - Community violence intervention programs

ADDRESS DISPARITIES

- **Programs or services that address housing insecurity, lack of affordable housing, or homelessness**
 - Supportive housing or other housing programs for homeless individuals
 - Affordable housing development
 - Housing vouchers and neighborhood relocation assistance
- **Programs or services that address the impact of COVID-19 on education**
 - New or expanded early learning services
 - Assistance to high-poverty school districts to advance equitable funding
 - Educational and evidence-based services to address the academic, social, emotional, and mental health needs of students

ADDRESS DISPARITIES

- **Programs or services that address or mitigate the impacts COVID-19 on childhood health or welfare**
 - New or expanded child care
 - Home visiting programs that provide education and assistance for economic support, health needs, or child development
 - Services for child-welfare involved families and foster youth to provide support and education on child development, positive parenting, coping skills, or recovery for mental health and substance use

PREMIUM PAY

- **Recipients may provide premium pay** (\$13/per hour) to eligible workers performing essential work during the COVID-19 public health emergency or provide grants to third-party employers with eligible workers performing essential work.
- Definition of essential employees includes:
 - Any work performed by an employee of the state, local or tribal government
 - Childcare workers, educators, and other school staff
 - Social service and human services staff

PREMIUM PAY

- Treasury is defining essential work as **regular in-person interactions** or regular physical handling of items that were also handled by others
- A worker would NOT be engaged in essential work and accordingly may not receive premium pay, for telework performed from a residence
- Premium pay **can be retroactive**
- Recipients have discretion to designate additional sectors
- Additional reporting requirements in certain cases (*grants to third-party employers*)

REPLACE LOST REVENUE

- Recovery Funds may be used to provide government services **to the extent of reduction in revenue** experienced due to COVID-19
- Recipients can use funds to support governments services with **broad flexibility**, including (but not limited to) **school or educational services, health services**, environmental remediation, public safety services and cybersecurity
- Important guidance on the calculation of “lost revenue” [can be found here](#).

KEY DATES RELATED TO THE RECOVERY FUND

- **January 27, 2020:** Declaration of the public health crisis
- **March 3, 2021:** Beginning of the Recovery Fund “covered period”
- **July 16, 2021:** Deadline to comment on U.S. Treasury’s *Interim Final Rule* on Recovery Fund
- **August 31, 2021:** Deadline to submit first Interim Report to U.S. Treasury
- **August 31, 2021:** Deadline to submit first *Recovery Plan Performance Report* to U.S. Treasury
- **Applies to COUNTIES ABOVE 250,000 POPULATION ONLY**
- **October 31, 2021:** Deadline to submit first *Quarterly Project and Expenditure Report*
- **Applies to ALL COUNTIES**
- **December 31, 2024:** Recovery Funds must be obligated (**NOT incurred**)
- **December 31, 2026:** Recovery Funds must be spent & all work/performance must be completed

SUPPORTING INFANTS AND TODDLERS WITH ARP RECOVERY FUNDS

KEY CONSIDERATIONS FOR LOCAL STAKEHOLDERS:

- County boards as key decisionmakers for county recovery funds
- Consider what worked well and what didn't with CRF programs
- Create realistic goals/expectations based on legislative parameters and Treasury guidance – visit www.naco.org/covid-19-recovery-clearinghouse
- Importance of a “supplement, not supplant” mentality
- Account for other federal COVID relief dollars – where are there gaps?
- Coordination with municipalities and state governments

Questions?

Arabella Pluta-Ehlers

Program Manager, Children, Youth & Families

202.942.4227

aplutaehlers@naco.org

Counties for Kids: www.countiesforkids.org

Eryn Hurley

Associate Legislative Director, Finance, Pensions and Intergovernmental Affairs | Immigration

571.262.9015

ehurley@naco.org

NACo COVID-19 Recovery Clearinghouse:

<https://www.naco.org/covid-19-recovery-clearinghouse>