

OCTOBER 25-27 | SNOWBIRD RESORT | SALT LAKE COUNTY, UTAH

2017 LARGE URBAN COUNTY CAUCUS SYMPOSIUM

SPONSORED BY qualtrics.







WELCOME

Dear Members, Partners and Guests of the Large Urban County Caucus,

Welcome to the 2017 LUCC Symposium! We appreciate the time you've taken to join us here in Salt Lake County at the premier annual forum for urban county officials, and we look forward to your participation in a series of timely programs that we hope will inform the work you undertake daily when you return to your home county.

Over the course of our three days together in Salt Lake County, we will explore **big ideas** – like how the laws of physics govern growth in metropolitan areas – **pressing issues** – like the economic impact of natural disasters, or the role of litigation in the local response to the opioid epidemic – and **forward-thinking solutions** – like impact investment partnerships and data-collection tools that can help to improve the services we provide to our residents and the outcomes those services help to achieve.

Ultimately, each of these conversations aims to strengthen our ability, as urban county officials, to help make our communities more livable, sustainable and equitable. We are glad that you have joined us to represent your county in these important discussions, and we look forward to your participation.

As we kick off this Symposium, we are grateful for the ongoing support of **Salt Lake County** and the **Utah Association of Counties**, whose partnership has enabled us to put together a program that addresses nationwide issues in part by highlighting innovative and impactful solutions launched here in Utah.

We are also excited to partner with **Qualtrics**, the Symposium's title sponsor and one of the leading residents of Utah's "Silicon Slopes," to host this event and to highlight how the company's concept of "experience management" can help urban counties transform the services we provide to our residents.

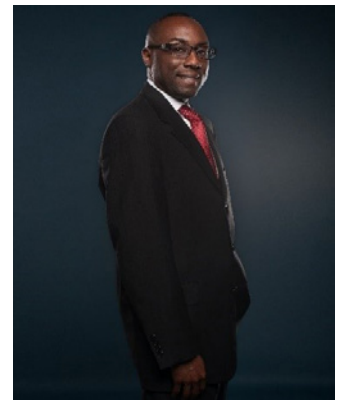
Thank you for your engagement with the Large Urban County Caucus, and we hope you enjoy your time here in Salt Lake County.

Sincerely,



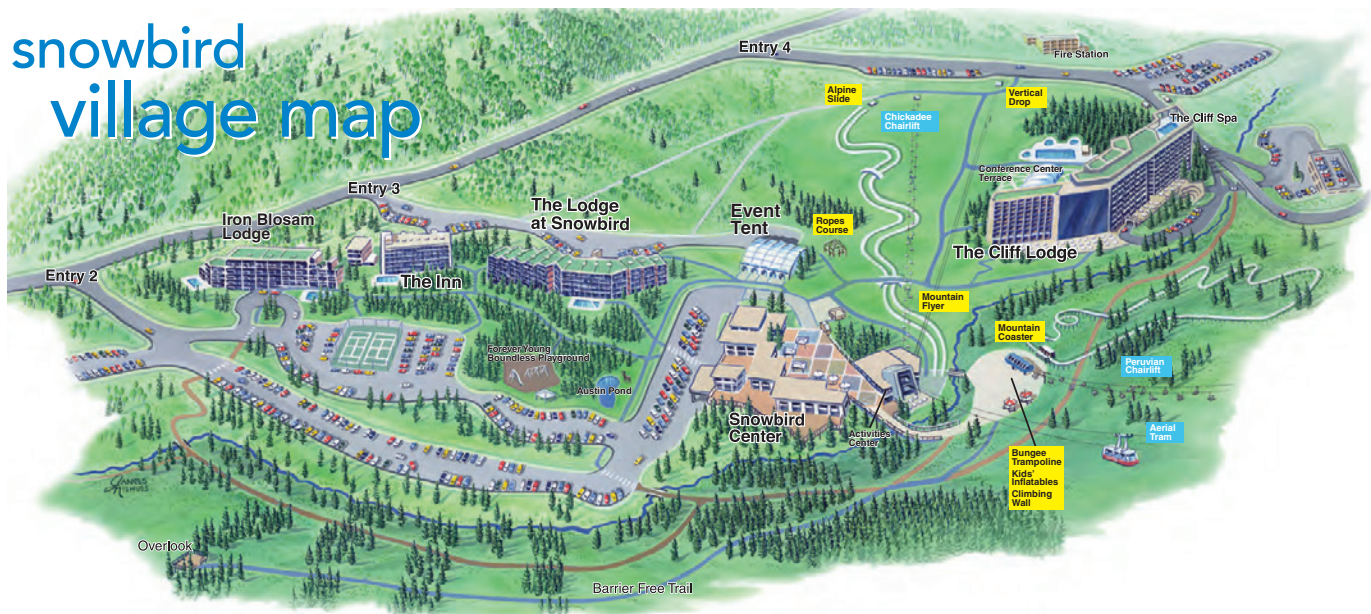
LARRY JOHNSON

Chair, Large Urban County Caucus
Commissioner, DeKalb County, Georgia



EVENT LOCATION

snowbird village map



Meetings & Banquets

The Cliff Lodge Meeting & Banquet Rooms
Snowbird Center
The Lodge at Snowbird

Outdoor Meeting Venues

Conference Center Terrace Tent
Creekside Terrace
Event Tent
Plaza Deck
Skier's Bridge

Dining & Nightlife

The Cliff Lodge
The Atrium
The Aerie
El Chanate Restaurant & Tequila Bar

The Lodge at Snowbird

The Lodge Bistro
Bistro Lounge

Snowbird Center

The Forklift
Baked & Brewed
General Gritts
Tram Car Pizza
Steak Pit
Tram Club

Hidden Peak (Top of the Tram)

The Summit

Shops

The Cliff Lodge
Cliff Sundries
Marco Polo
Cliff Spa Shop

Snowbird Center

Wine & Liquor Store
Pipeline
Center Sundries
Christy Sports
Powder Shots
Snowbird Sports
General Gritts

Hidden Peak (Top of the Tram)

The Summit Shop

The Cliff Spa

The Cliff Lodge
Fitness Room & Classes
Roof Top Pool & Hot Tub
Spa Salon

Summer Activities

Aerial Tram
Peruvian Chairlift & Tunnel
Alpine Slide
Mountain Flyer
Mountain Coaster
Vertical Drop
Ropes Course
Climbing Wall
Bungee Trampolines
Kids' Inflatables
Wasatch Mining Co.
Forever Young Boundless Playground

Services

The Cliff Lodge
Wi-Fi
ATM
Public Safety
Valet Parking

Snowbird Center

Wi-Fi
ATM
Post Office
Pharmacy
Public Safety
Wasatch Adaptive Sports

Fire Station



AGENDA

TUESDAY, OCTOBER 24

5:00 P.M. – 7:00 P.M. REGISTRATION OPEN IN LOBBY

[Lobby]

WEDNESDAY, OCTOBER 25

7:30 A.M. – 5:00 P.M. REGISTRATION OPEN IN LOBBY

[Lobby]

8:30 A.M. – 9:00 A.M. BREAKFAST AVAILABLE IN LOBBY

[Lobby]

9:00 A.M. – 9:45 A.M. OPENING PLENARY SESSION

[Ballroom 3]

To kick off the 2017 Symposium, leaders from the state of Utah and Salt Lake County will welcome LUCC members and join us to begin conversations that will continue throughout the symposium: what lies ahead for urban counties, and how can we proactively prepare for the changes to come? What are the new challenges that we are likely to face, and what innovative solutions are developing for our existing challenges?

- **Commissioner Roy C. Brooks**, Tarrant County, Texas; NACo President
- **Commissioner Larry Johnson**, DeKalb County, Ga.; LUCC Chair
- **Mayor Ben McAdams**, Salt Lake County, Utah

10:00 A.M. – 10:45 A.M. EXPERIENCE MANAGEMENT: A CONVERSATION WITH QUALTRICS CEO RYAN SMITH

[Ballroom 3]

Among the leading residents of Utah's burgeoning "Silicon Slopes," Qualtrics partners with thousands of entities across the globe – including two-thirds of the Fortune 100 – to improve the experiences of citizens, customers, employees and stakeholders. At the company's helm is Ryan Smith, recently featured in *Fortune Magazine's* "40 under 40" and recognized as one of the pioneers of Silicon Slopes. Ryan will join us in conversation with longtime NACo partner Lew Cramer to discuss "experience management" and how the concept can help urban counties transform the services they provide to their citizens.

- **Mr. Ryan Smith**, CEO, Qualtrics
- **Mr. Lew Cramer**, CEO and President, Coldwell Banker Commercial Advisors

11:00 A.M. – 12:00 P.M. **ACCELERATING SUSTAINABLE SOCIAL CHANGE THROUGH IMPACT INVESTING**
[Ballroom 3]

Accelerating measurable change for at-risk and under-served populations, innovative public-private partnerships backed by data and evidence have evolved from a novel concept to a sustainable Pay for Performance sector focusing on issues ranging from poverty and job creation to renewable energy and affordable housing. Leaders from Sorenson Impact and Maycomb Capital will join LUCC to discuss the lessons learned from pioneering efforts in the Pay for Performance sector, the field of impact investment, and emerging opportunities for urban counties to partner with the private sector and philanthropic foundations to build solutions that have a positive and sustainable community impact.

- **Mr. James Lee Sorenson**, Chairman, Board of Directors, Sorenson Impact Foundation
- **Mr. Jeremy Keele**, President and CEO, Sorenson Impact Center
- **Ms. Andi Phillips**, Founder and Managing Partner, Maycomb Capital

12:15 P.M. – 1:30 P.M. **LUNCHEON: APPLYING LAWS OF GROWTH TO URBAN EXPANSION AND SUSTAINABILITY**
[Ballroom 2]

Dr. Geoffrey West, a leading theoretical physicist and one of *Time Magazine's* 100 most influential people, contends that the growth of metropolitan areas is subject to the same set of universal and physical laws that govern growth in natural organisms. Dr. West will join us to discuss his research to support this contention, and its implications for local governments charged with overseeing sustainable and equitable urban growth. A limited number of Dr. West's *Scale: The Universal Laws of Growth, Innovation, Sustainability, and the Pace of Life in Organisms, Cities, Economies, and Companies* will be available for purchase and signing by the author.

- **Dr. Geoffrey West**, Distinguished Professor and Past President, Santa Fe Institute

1:45 P.M. – 3:00 P.M. **CONCURRENT BREAKOUT SESSIONS**

[Wasatch A] **ENVISION UTAH: EMPOWERING COMMUNITY ENGAGEMENT IN GROWTH**

In 1997, Envision Utah began an unprecedented conversation about growth in Utah, utilizing interviews, mapping exercises, surveys and other means to foster public engagement in decision-making related to local development and expansion. This breakout session, led by Envision Utah President and CEO Robert Grow, will provide an overview of the organization's unique approach, leading to a discussion of how urban counties can effectively garner residents' input and support as they pursue growth and development that serves community needs and reflects local values.

- **Mr. Robert Grow**, President and CEO, Envision Utah

[Wasatch B]

BIPARTISAN POLICY CENTER FOCUS GROUP ON BUILDING A 21st CENTURY WORKFORCE

Counties across the country have been overwhelmed by rapid economic change, leaving many communities with a workforce ill-suited for the 21st-century job market. These conditions have created broader economic and social consequences, particularly for the “working poor,” who are often just one paycheck away from financial ruin. In response, communities are pursuing innovative approaches for building a modern workforce by leveraging advanced technologies, crafting policies that successfully connect with federal programs, and partnering with businesses and educators. The Bipartisan Policy Center is exploring ways to more effectively link federal policies to the needs of local communities as they work to build and sustain a skilled 21st-century workforce. This breakout session is an opportunity for urban county officials to present their perspective on these challenges and to share best practices in (re)developing a skilled local workforce that no longer has to face looming economic insecurity.

- **Mr. Sandy Davis**, Senior Advisor, Bipartisan Policy Center

[White Pine]

SORENSEN IMPACT FOCUS GROUP ON SOCIAL IMPACT INVESTING

Following the plenary session discussion, leaders from Sorenson Impact will convene a smaller group of LUCC members for a deep dive into Pay for Performance models that leverage impact investing to achieve measurable positive outcomes at scale. The perception of models like Pay for Success is that they are complex and costly to develop. However, the sector has identified how to streamline best practices and leverage existing federal and state dollars to serve those most in need. This facilitated discussion will focus not only on how to develop these projects, but also on the value proposition for stakeholders including elected officials, service populations, and private funders and philanthropists. In addition to focusing on value and mechanics, the session will focus on Sorenson Impact’s work on developing enabling legislation that accelerates a performance-driven social sector.

- **Ms. Andi Phillips**, Founder and Managing Partner, Maycomb Capital
- **Dr. Jack Robinson**, Chief Research Officer, Sorenson Impact Center

3:30 P.M. – 5:00 P.M. LUCC STEERING COMMITTEE BUSINESS MEETING

[Ballroom 2]

Open to all Symposium attendees, this meeting of the LUCC Steering Committee will focus on the future and strategic direction of LUCC. Discussions will include federal policy priorities, key partnerships in a new Administration and locations for upcoming LUCC symposiums. These discussions will inform LUCC programming and advocacy in the coming year.

- **Chair Larry Johnson**, Commissioner, DeKalb County, Ga.

6:00 P.M. – 8:30 P.M. SCENIC SUNSET TRAM RIDE, HAPPY HOUR AND DINNER AT SNOWBIRD SUMMIT

*[Meet in Lobby at 6:00 P.M.
to Depart as Group]*

Located 11,000 feet above sea level, the Snowbird Summit atop Hidden Peak provides spectacular panoramic views of the surrounding Wasatch-Cache National Forest. Following a sunset tram ride to the Summit, we will gather for a scenic happy hour followed by a group dinner. Although drinks and dinner will be indoors, you may want to bundle up for this voyage, as temperatures atop Hidden Peak are significantly lower than those at the base of the mountain.

THURSDAY, OCTOBER 26

7:30 A.M. – 2:00 P.M. REGISTRATION OPEN IN LOBBY

[Lobby]

8:30 A.M. – 9:00 A.M. BREAKFAST AVAILABLE IN LOBBY

[Lobby]

9:00 A.M. – 10:00 A.M. OPIOID LITIGATION OVERVIEW: ACCOUNTABILITY AND DETERRENCE

[Ballroom 3]

An effective local response to the opioid epidemic is multifaceted, containing prevention strategies, treatment options, recovery resources, and – in an increasing number of counties – lawsuits against the manufacturers and distributors of prescription painkillers. This session will explore: 1) the pharmaceutical practices under question in these lawsuits, 2) the impact of these practices on local governments, and 3) how litigation against the pharmaceutical industry can help to curb the opioid epidemic.

- **Professor Teneille Ruth Brown**, SJ Quinney College of Law, University of Utah
- **Commissioner Sharon Meieran**, Multnomah County, Ore.
- **Mr. Danny Chou**, Assistant County Counsel, Santa Clara County, Calif.
- **Ms. Harriet Ryan**, Reporter, Los Angeles Times

10:15 A.M. – 11:00 A.M. FORECASTING THE ECONOMIC OUTLOOK FOR URBAN COUNTIES

[Ballroom 3]

The U.S. economy has entered its eighth consecutive year of growth since the Great Recession. As we reach new post-recession heights, many are turning their attention to the next recession, an exercise which reflects heightened national policy uncertainty. Policymakers in Washington and state capitals throughout the country are grappling with tax and healthcare reform, while the Federal Reserve is setting precedent with regard to extraordinary monetary policy measures. This session will explore: 1) where is the national economy going? 2) what will this mean for urban county economies? 3) how do all of these factors translate into county budgets?

- **Mr. Dan White**, Director, Moody's Analytics

11:15 A.M. – 12:15 P.M. THE ECONOMICS OF DISASTER: ACHIEVING MITIGATION AND ENSURING EQUALITY
[Ballroom 3]

Even before Harvey and Irma wrought havoc on our shores, a “disastrous pattern” had come into focus throughout the country: natural disasters occurring with greater frequency, with each disaster seemingly costlier than the last. This pattern threatens the economic vitality of urban counties, and its wrath is often felt most acutely by disadvantaged residents within our counties. This session will explore: 1) the economic impact of natural disasters, 2) how disasters can have disparate impacts on communities, and 3) how urban counties can work to lessen the economic impact and inequity of disasters when they strike.

- **Ms. Margaret Larson**, Emergency Management Consultant, EY
- **Councilman Matt Schellenberg**, Jacksonville/Duval County, Fla.
- **Mr. Nick Crossley**, Emergency Management Director, Hamilton County, Ohio

12:30 P.M. – 1:30 P.M. NETWORKING LUNCHEON
[Ballroom 2]

2:00 P.M. SALT LAKE COUNTY MOBILE WORKSHOPS

*[Meet in Lobby,
Buses Depart
by 2:15 P.M.]*

HOMELESSNESS / VOLUNTEERS OF AMERICA YOUTH RESOURCE CENTER

888 South 400 West, Salt Lake City

Salt Lake County is engaged in a multi-partner effort to address the homelessness crisis in Utah. Using a “Collective Impact” approach, the county is working with service providers and numerous other stakeholders to set a common agenda, determine shared outcome measures, and foster a culture of continuous improvement in homeless service delivery. This mobile workshop will provide a high-level overview of this effort, highlighting major challenges, key accomplishments and the path forward, and demonstrating ways in which Salt Lake County’s work on homelessness is influencing statewide policies and practices. The workshop will be held at Volunteers of America Utah’s new Youth Resource Center.

NEW AMERICANS / SPICE KITCHEN INCUBATOR

2180 300 West, Unit 102, Salt Lake City

The Salt Lake County Mayor’s Office for New Americans embraces “Utah’s proud tradition of welcoming newcomers” by working to maximize the economic, social and civic potential of the county’s New Americans. The office pursues these goals through a New Americans Task Force, which has formulated a Welcoming Plan that sets forth proposed actions including cultural competency training for county staff and industry-specific language courses. This workshop will provide an overview of the New Americans Task Force, in addition to a tour of the Spice Kitchen, an innovative culinary incubator fostering integration and entrepreneurship among New Americans.

ARTS AND CULTURE / ECCLES THEATER

131 South Main Street, Salt Lake City

The Salt Lake County Center for the Arts supports the operation of historic and newly-constructed cultural facilities, helping to bring world class arts and culture to the county and its surrounding communities. Considering these facilities a key part of its community planning and development, the county utilizes public-private partnerships to facilitate their ownership and operation. This workshop will provide an overview of how Salt Lake County leverages public-private partnerships to support cultural facilities, as well as a tour of the newly-opened Eccles Theater, a state-of-the-art performing arts center that hosts touring Broadway shows, concerts and comedy shows.

5:30 P.M. DINNER UNDER THE CAPITOL ROTUNDA

[Utah State Capitol]

350 State Street, Salt Lake City

For more than a century, the Utah State Capitol has been one of Utah's most prominent landmarks. The building was completed in 1916, and a massive restoration project was undertaken between 2004 and 2008. LUCC members will convene for dinner under the splendid rotunda of the capitol building.

7:30 P.M. BUSES RETURN TO SNOWBIRD

[Meet Outside Capitol]

8:15 P.M. NETWORKING DESSERT & DRINKS HOUR AT SNOWBIRD

[Atrium at Cliff Lodge]

FRIDAY, OCTOBER 27

7:30 A.M. – 8:30 A.M. BREAKFAST AVAILABLE IN LOBBY

[Lobby]

8:30 A.M. BUSES DEPART FOR QUALTRICS HQ

[Meet in Lobby]

9:15 A.M. – 2:30 P.M. QUALTRICS EXECUTIVE LEADERSHIP SYMPOSIUM

[Qualtrics HQ]

333 West River Park Drive, Provo

Great focus has been placed in recent years on data-driven solutions and how they can help counties improve operations and service delivery. During this one-of-a-kind event, we will receive a practical overview of how urban counties are putting these concepts into practice. The event will conclude with a beer garden barbecue in the shadows of Mount Timpanogos. [Detailed event agenda on following pages]

2:30 P.M. BUS 1 DEPARTS QUALTRICS HQ FOR SALT LAKE CITY INTERNATIONAL AIRPORT

2:30 P.M. BUS 2 DEPARTS QUALTRICS HQ FOR SNOWBIRD

The Qualtrics / NACo

Executive Leadership Symposium

Learn how counties are thriving by continuously collecting and acting on experience data from their citizens and employees.

Schedule for Friday, October 27

8:30 AM BUSES DEPART

Shuttle from Snowbird Resort to Qualtrics Headquarters.

9:30 AM QUALTRICS WELCOME AND HISTORY**10:15 AM CITIZEN EXPERIENCE - MIAMI-DADE COUNTY**

Learn how to engage citizens at every touchpoint. Monitor, respond to, and improve every interaction along the citizen journey.

10:50 AM EMPLOYEE EXPERIENCE - LOS ANGELES COUNTY

Drive county employee excellence by measuring and optimizing every stage of the employee lifecycle. Learn the basics of employee engagement.

11:25 AM BRAND EXPERIENCE - ECONOMIC DEVELOPMENT

Test and improve county image, and identify your essential brand drivers. "Counties Matter."

12:10 AM VOICE OF THE CITIZEN - HOW TO GAIN CITIZEN BUY-IN

Learn the basics of Voice of the Citizen (VoC) data science to inspire bold ideas within your constituencies. Gain insights from the popular Voice of the Citizen program.

12:45 PM LUNCH

Enjoy world-famous Bam Bams BBQ and individual tours of the Qualtrics campus.

1:30 PM BEER GARDEN ACTIVITIES

Join us for the end-of-week festivities in the shadows of Mount Timpanogos. We promise to have 90% of the alcohol in Utah County for this party.

2:30 PM LEADERSHIP SYMPOSIUM FAREWELL

Receive your NACo / Qualtrics Symposium Certificate of Graduation and tokens of appreciation.

2:45 PM BUSES DEPART

Shuttle from Qualtrics back to Snowbird Resort.



ABOUT QUALTRICS EXPERIENCE MANAGEMENT

The Qualtrics Experience Management Platform allows organizations to continuously improve the experiences they provide to stakeholders. Our business customers use Qualtrics to identify key drivers of the customer, employee, product, and brand experience and use those insights to set themselves apart.

Our county customers use Qualtrics to optimize the experiences they provide to citizens and employees. With Qualtrics, counties have the flexibility to run all of their research projects on one platform—distributing surveys and digital forms, measuring citizen satisfaction and employee engagement, tracking county image, evaluating programs, and much more.

QUALTRICS PARTNERS WITH



100

federal customers across 50
agencies and departments



8,500+

customers in 90 countries



2/3

of the Fortune 100



1,800

universities and colleges
worldwide that teach Qualtrics

“We were trying to figure out how to get resident information as quickly as possible. Qualtrics gives us **REPRESENTATIVE DATA** in real time so that we can improve the **QUALITY OF LIFE** for all our residents, not just those who show up to city council meetings.”

JOHN CURTIS

Mayor of Provo City

SPEAKER & PRESENTER BIOGRAPHIES

WEDNESDAY, OCTOBER 25

SESSION: EXPERIENCE MANAGEMENT: A CONVERSATION WITH QUALTRICS CEO RYAN SMITH

MR. RYAN SMITH, CEO, QUALTRICS



Ryan Smith co-founded Qualtrics in 2002 with the goal of making sophisticated research simple. As CEO, he has grown the company from a basement startup to one of the fastest-growing technology companies in the world. Qualtrics has more than 8,500 enterprise customers, including 2/3 of the Fortune 100, thousands of colleges and universities worldwide, and 99 of the top 100 business schools. In 2013, Ryan was named one of Forbes' "America's Most Promising CEOs Under 35," and in 2016, he was listed #12 on *Forbes'* 40 under 40 list. Under Ryan's leadership, Qualtrics is focused on driving "Experience Management" by providing software that allows organizations – including an increasing number of urban counties – to assess and improve the experiences they provide to a variety of stakeholders.

MR. LEW CRAMER, CEO, COLDWELL BANKER COMMERCIAL ADVISORS



Lew Cramer serves as the CEO of Coldwell Banker Commercial Advisors, which is recognized as the fastest growing mid-sized commercial real estate brokerage in the nation. In 2016, Lew was honored by Utah Business as its CEO of the year. Prior to his current role, Lew was the Founding President of World Trade Center Utah, where he continues to serve as Vice Chairman. No stranger to counties, Lew is a long-time NACo partner and currently serves as a Director on the NACo Financial Services Corporation's Board of Directors.

SESSION: ACCELERATING SUSTAINABLE SOCIAL CHANGE THROUGH IMPACT INVESTING

MR. JAMES LEE SORENSON, CHAIRMAN, BOARD OF DIRECTORS, SORENSON IMPACT FOUNDATION



Jim Sorenson is a world-renowned entrepreneur, business leader and societal innovator. In 2013, he provided the David Eccles School of Business at the University of Utah with a \$13 million gift to create Sorenson Impact, with a mission of marshalling capital for social good. Jim has helped to develop several new industry categories in today's business world, including digital video compression software and video relay service for deaf and hard-of-hearing individuals. He enjoys combining innovative and worthwhile ideas with talented management teams to produce growing new enterprises.

MR. JEREMY KEELE, PRESIDENT AND CEO, SORENSON IMPACT CENTER



Jeremy Keele's work as President and CEO of the Sorenson Impact Center is dedicated to advising stakeholders from philanthropy, government, investment and nonprofits on innovative and data-driven approaches to solving difficult social problems in their communities. Under Jeremy's leadership, the Center has grown from three employees in 2014 to 35 in 2017. Prior to joining the Sorenson Impact Center, Jeremy worked as senior advisor to Salt Lake County Mayor Ben McAdams, advising the Mayor on all of his key policy initiatives, including social policy, transportation and homelessness.

MS. ANDI PHILLIPS, MANAGING PARTNER, MAYCOMB CAPITAL LP



Andi Phillips is the Co-Founder and Managing Partner of Maycomb Capital LP, a new impact investing platform under which she has launched the Community Outcomes Fund, the first U.S. outcomes-based financing fund. Previously, Andi worked as a Vice President in the Urban Investment Group at Goldman Sachs, where she launched and managed the Goldman Sachs Social Impact Fund and led signature social impact bond investments for the firm, including investment in the Rikers Island Social Impact Bond, the first such transaction ever executed in the U.S. market.

SESSION: APPLYING LAWS OF GROWTH TO URBAN EXPANSION AND SUSTAINABILITY

DR. GEOFFREY WEST, DISTINGUISHED PROFESSOR, SANTA FE INSTITUTE



Geoffrey West is a renowned theoretical physicist who serves as Distinguished Professor and Past President of the Santa Fe Institute and previously founded and led the high energy physics group at the Los Alamos National Laboratory. In 2006, he was chosen as one of Time Magazine's 100 most influential people in the world. Geoffrey's long-term fascination in general scaling phenomena has led to a recent focus on the applicability of universal scaling laws to social organizations – like metropolitan areas – and their implications for long-term sustainability of urban growth and expansion.

SESSION: ENVISION UTAH: EMPOWERING COMMUNITY ENGAGEMENT IN GROWTH

MR. ROBERT GROW, PRESIDENT AND CEO, ENVISION UTAH



Robert Grow is the President and CEO and primary architect of Envision Utah, a private-public quality growth partnership founded in 1997 and widely recognized as one of the nation's most successful public involvement efforts for the development of a broad-based, long-term growth strategy for a major metropolitan area. Over the course of a distinguished career, Robert has worked with more than 80 metropolitan regions throughout the country, and has played leading roles in visioning teams for San Diego, Laie, Hawaii, Traverse City, Michigan and Southern Louisiana.

SESSION: BIPARTISAN POLICY CENTER FOCUS GROUP ON 21ST CENTURY WORKFORCE

MR. SANDY DAVIS, SENIOR ADVISOR, BIPARTISAN POLICY CENTER



Sandy Davis is a senior advisor with the Economic Policy Project of the Bipartisan Policy Center (BPC), a Washington, D.C.-based think tank focused on driving bipartisan policy solutions through rigorous analysis and negotiation. In role at BPC, Sandy focuses on “evidence-based budgeting” as a means to more effectively target public funds. Prior to joining BPC, Sandy served as the associate director for legislative affairs at the Congressional Budget Office (CBO) from 2003 until 2015, serving as CBO’s principal liaison to Congress and its budgetary committees.

SESSION: SORENSON IMPACT FOCUS GROUP ON SOCIAL IMPACT INVESTING

DR. JACK PETERSON, CHIEF RESEARCH OFFICER, SORENSON IMPACT CENTER



Jack Robinson is the Chief Research Officer at Sorenson Impact, where he aligns the organization’s mission, research agenda, and strategic goals. He supports teams across the Center’s platforms from project conception to implementation and provides high-level advisory services on the variety of project models, finance vehicles, and data-driven strategies deployed across the Center. In his work at Sorenson Impact and in previous private sector consulting, he has advised on infrastructure, regional economic development, and measurement systems for impact and sustainability. Jack holds a Ph.D. in City and Regional Planning from the University of Pennsylvania and teaches City and Metropolitan Economics at the University of Utah’s College of Architecture and Planning.

THURSDAY, OCTOBER 26

SESSION: OPIOID LITIGATION OVERVIEW: ACCOUNTABILITY AND DETERRENCE

PROFESSOR TENEILLE RUTH BROWN, SJ QUINNEY COLLEGE OF LAW, UNIVERSITY OF UTAH



Teneille Ruth Brown is a professor at the SJ Quinney College of Law, focusing on a wide range of issues at the intersection of law, biotechnology, medicine and ethics, including pharmaceutical litigation and product liability. Teneille joined the College of Law faculty in 2009 following two years as a fellow at Stanford University, where she was a post-doctoral scholar in the medical school’s Center for Biomedical Ethics and a fellow with the law school’s Center for Law and the Biosciences, and has also worked as a fellow with the MacArthur Foundation’s Law and Neuroscience Project. She is a graduate of the University of Michigan School of Law.

COMMISSIONER SHARON MEIERAN, MULTNOMAH COUNTY, OREGON



Sharon Meieran represents the residents of District 1 on the Multnomah County Board of County Commissioners, with priorities that include homelessness, addictions, mental illness and improving access to meaningful health care. She is “a doctor, a lawyer and a mom” who works as an emergency room doctor with first-hand experience in pain management and the prescription of opioids, with a background in complex civil litigation. She has been a leading voice in Multnomah County’s efforts – which include the recent filing of a lawsuit against an opioid manufacturer – to “hold those who caused the opioid epidemic accountable.”

MR. DANNY CHOU, ASSISTANT COUNTY COUNSEL, SANTA CLARA COUNTY, CALIFORNIA



Danny Chou supervises the Health & Hospital, Impact Litigation & Social Justice, and Probate sections of the Santa Clara’s Office of the County Counsel. Since joining the office, Danny has been involved in litigation against opioid manufacturers that led to a recent \$1.6 million settlement, and has served as a lead public lawyer in a case that resulted in a judgment establishing a \$1.15 billion fund dedicated to the abatement of residential lead paint. Prior to joining Santa Clara County, Danny served as the Chief of Complex and Special Litigation at the San Francisco City Attorney’s Office. He is a graduate of Harvard Law School.

MS. HARRIET RYAN, REPORTER, LOS ANGELES TIMES



Harriet Ryan has worked as an investigative reporter for the Los Angeles Times since 2008. Since joining the publication, she has written about high-profile people, including Phil Spector and Michael Jackson, and institutions, including the Catholic Church, the Kabbalah Centre and Purdue Pharma, the manufacturer of OxyContin. Harriet was the lead reporter of The Times' widely acclaimed 2016 investigative series about the production and abuse of OxyContin, titled 'You Want a Description of Hell? OxyContin's 12-Hour Problem.' The series was honored with a bronze award at the Bartlett & Steele Awards for Investigative Journalism.

SESSION: FORECASTING THE ECONOMIC OUTLOOK FOR URBAN COUNTIES

MR. DAN WHITE, DIRECTOR, MOODY'S ANALYTICS.



Dan White is a director at Moody's Analytics, responsible for directing government consulting and economic research with an emphasis on public finance and fiscal policy. He works closely with a number of governments and policymakers in an advisory role and teaches economics at Villanova University. He has covered local and state fiscal issues in numerous media outlets, including Bloomberg Television and the Wall Street Journal. Prior to joining Moody's, Dan was a financial economist for the State of New Mexico, where he forecast revenues and analyzed a wide range of policy issues related to economic development, public investment and debt management.

SESSION: THE ECONOMICS OF DISASTER: ACHIEVING MITIGATION AND ENSURING EQUALITY

MS. MARGARET LARSON, EMERGENCY MANAGEMENT CONSULTANT, EY



Margaret Larson serves as an emergency management consultant at EY, dedicated to assisting governmental, nonprofit and corporate entities to expedite financial recovery and mitigation after catastrophic loss. She has expertise on federal disaster recovery programs, including those administered by the Federal Emergency Management Agency (FEMA) and the U.S. Department of Housing and Urban Development. Margaret also serves as the Western Program Director for Witt O'Brien's, a global leader in preparedness, crisis management and disaster response. She is a frequent partner of NACo on matters related to emergency management and disaster recovery.

COUNCILMAN MATT SCHELLENBERG, CITY OF JACKSONVILLE, FLORIDA



Matt Schellenberg represents the residents of District 6 on the Jacksonville City Council and chairs the council's Land Use & Zoning Committee. Since he joined the council in 2011, Jacksonville has experienced two major natural disasters: Hurricane Matthew in 2016 and Hurricane Irma earlier this year. Each hurricane was followed by massive flooding that wreaked havoc on the Jacksonville metropolitan area, leaving residents without power and in some cases in need of rescue. Matt has been a Jacksonville resident for decades and was selected as a 2017 Presidential Advocate by the Florida Association of Counties.

MR. NICK CROSSLEY, DIRECTOR, EMERGENCY MANAGEMENT AND HOMELAND SECURITY AGENCY, HAMILTON COUNTY, OHIO



Nick Crossley leads the coordination and administration of countywide all-hazards emergency management and disaster preparedness functions for Hamilton County and its political subdivisions. Under Nick's leadership, the Hamilton County Emergency Management and Homeland Security Agency focuses on a "Whole Community" approach to emergency management that leverages all available resources to meet the needs of the entire community before, during and after disasters. Nick currently serves as the First Vice President of the International Association of Emergency Manager's (IAEM).



LUCC STEERING COMMITTEE

CHAIR

LARRY L. JOHNSON
Commissioner
DeKalb County, Georgia

VICE CHAIRS

CHRIS ABELE
County Executive
Milwaukee County, Wisconsin

KATHRYN BARGER
Supervisor
Los Angeles County, California

EDWARD M. EMMETT
County Judge
Harris County, Texas

MARK H. LUTTRELL, JR.
County Mayor
Shelby County, Tennessee

JOHN O'GRADY
Commissioner
Franklin County, Ohio

DENISE WINFREY
Board Member
Will County, Illinois

EXECUTIVE COMMITTEE LIAISON

MARY ANN BORGESON
Commissioner
Douglas County, Nebraska

IMMEDIATE PAST CHAIR

JIM MCDONOUGH
Commissioner
Ramsey County, Minnesota

MEMBERS

IKAIKA ANDERSON
Council Member
Honolulu City and County, Hawaii

RUSHERN L. BAKER III
County Executive
Prince George's County, Maryland

LISA BARTLETT
Supervisor, Chairwoman
Orange County, California

ALISHA R. BELL
Commissioner
Wayne County, Michigan

MARY LOU BERGER
Commissioner
Palm Beach County, Florida

GEORGE F. BOWMAN, SR.
Commissioner
Jefferson County, Alabama

KEVIN BOYCE
Commissioner
Franklin County, Ohio

ROY CHARLES BROOKS
Commissioner
Tarrant County, Texas

MARILYN BROWN
Commissioner
Franklin County, Ohio

KEITH CARSON

Supervisor
Alameda County, California

TONI CARTER

Commissioner
Ramsey County, Minnesota

KATIE S. CASHION

Commissioner
Guilford County, North Carolina

C. MARTY CASSINI

Legislative Counsel
Broward County, Florida

IRMA CLARK-COLEMAN

Commissioner
Wayne County, Michigan

THERESA M. DANIEL

Commissioner
Dallas County, Texas

DAVID DENNIS

Commissioner
Sedgwick County, Kansas

DENA R. DIORIO

County Manager
Mecklenburg County, North Carolina

GEORGE DUNLAP

Commissioner
Mecklenburg County, North Carolina

REAGAN DUNN

Councilmember
King County, Washington

AUDREY EDMONSON

Commissioner
Miami-Dade County, Florida

ED EILERT

Commissioner
Johnson County, Kansas

VERONICA ESCOBAR

County Judge
El Paso County, Texas

JARED N. EVANS

Council Member
Indianapolis and Marion County,
Indiana

GARY FICKES

Commissioner
Tarrant County, Texas

RICH FITZGERALD

County Executive
Allegheny County, Pennsylvania

NANCY FLOREEN

Council Member
Montgomery County, Maryland

STEVE GALLARDO

Supervisor
Maricopa County, Arizona

GREGG GOSLIN

Commissioner
Cook County, Illinois

SHARON GREEN MIDDLETON

Council Vice-President
Baltimore City, Maryland

MARION GREENE

Commissioner
Hennepin County, Minnesota

SCOTT HAGGERTY

Supervisor
Alameda County, California

ANDREA HARRISON

Council Member
Prince George's County, Maryland

SUZANNE HART

Board Member
Will County, Illinois

JAMES D. HEALY

Board Member
DuPage County, Illinois

SALLY A. HEYMAN

Commissioner
Miami-Dade County, Florida

LINDA HIGGINS

Commissioner
Hennepin County, Minnesota

JIM HOWELL

Commissioner
Sedgwick County, Kansas

BRENDA HOWERTON

Commissioner
Durham County, North Carolina

CHRISTOPHER HUDAK

Freeholder
Union County, New Jersey

SIG HUTCHINSON

Commissioner
Wake County, North Carolina

NANCY JACKSON

Commissioner
Arapahoe County, Colorado

CLAY JENKINS

County Judge
Dallas County, Texas

DIANE JONES

Commissioner
Kent County, Michigan

MARILYN KIRKPATRICK

Commissioner
Clark County, Nevada

CHIP LAMARCA

Commissioner
Broward County, Florida

KATHY LAMBERT

Councilmember
King County, Washington

DOUG LASHER

County Treasurer
Clark County, Washington

CHRISTOPHER J. LAUZEN

Board Chairman
Kane County, Illinois

STEVE LAVAGNINO

Supervisor
Santa Barbara County, California

AARON LAWLOR

Board Chair
Lake County, Illinois

VILMA D. LEAKE

Commissioner
Mecklenburg County, North Carolina

DANIELLA LEVINE CAVA

Commissioner
Miami-Dade County, Florida

DEBORAH A. LIEBERMAN

Commissioner
Montgomery County, Ohio

JOEY MANAHAN

Council Member
Honolulu City and County, Hawaii

ERNEST Y. MARTIN

Council Member
Honolulu City and County, Hawaii

BEN MCADAMS

County Mayor
Salt Lake County, Utah

MARY JO MCGUIRE

Commissioner
Ramsey County, Minnesota

PETER MCLAUGHLIN

Commissioner
Hennepin County, Minnesota

DONALD MORAN

Board Member
Will County, Illinois

JAMES G. MOUSTIS

Board Member
Will County, Illinois

DAVID L. NICHOLSON

Circuit Court Clerk
Louisville Jefferson County Metro
Government, Kentucky

PATRICIA S. O'BANNON

Supervisor
Henrico County, Virginia

MICHAEL O'DONNELL II

Commissioner
Sedgwick County, Kansas

DENNIS O'LOUGHLIN

Supervisor
Dane County, Wisconsin

THOMAS O'NEILL III

Board Member
Peoria County, Illinois

DOLORES ORTEGA-CARTER

Treasurer
Travis County, Texas

TREVOR OZAWA

Council Member
Honolulu City and County, Hawaii

G. FREDERICK PAYNE

Council Member
Greenville County, South Carolina

RONALD PETERS

Commissioner
Tulsa County, Oklahoma

STAN PONSTEIN

Commissioner
Kent County, Michigan

TONI PRECKWINKLE

Board President
Cook County, Illinois

PAULA PRENTICE

Council Member
Summit County, Ohio

RICHARD RANZAU

Commissioner
Sedgwick County, Kansas

VICTORIA REINHARDT

Commissioner
Ramsey County, Minnesota

HANS RIEMER

Council Member
Montgomery County, Maryland

CHRISTOPHER T. RODGERS

Commissioner
Douglas County, Nebraska

DAVID SARTORI

Supervisor
Milwaukee County, Wisconsin

MATTHEW SCHELLENBERG

Council Member
Duval County/City of Jacksonville,
Florida

MICHAEL SCHOLES

County Manager
Sedgwick County, Kansas

ILENE SHAPIRO

County Executive
Summit County, Ohio

BRIGID SHEA

Commissioner
Travis County, Texas

LORETTA SMITH

Commissioner
Multnomah County, Oregon

DAVE SOMERS

County Executive
Snohomish County, Washington

LAUREN STALEY-FERRY

Board Member
Will County, Illinois

BRIAN SULLIVAN

Council Member
Snohomish County, Washington

JIM TALEN

Commissioner
Kent County, Michigan

ANTHONY TROTMAN

Assistant County Manager
Mecklenburg County, North Carolina

DAVID UNRUH

Commissioner
Sedgwick County, Kansas

BETSY VANDERLEY

Commissioner
Orange County, Florida

JESSICA VEGA PEDERSON

Commissioner
Multnomah County, Oregon

LAWRENCE WEEKLY

Commissioner
Clark County, Nevada

GLORIA D. WHISENHUNT

Commissioner
Forsyth County, North Carolina

GLEN WHITLEY

County Judge
Tarrant County, Texas

JOHN WILSON

County Assessor
King County, Washington

KENNETH WILSON

County Administrator
Franklin County, Ohio

AIMEE WINDER NEWTON

Council Member
Salt Lake County, Utah

STEPHANIE WRIGHT

Council Member
Snohomish County, Washington

KEN YEAGER

Supervisor
Santa Clara County, California

NACo STAFF LIAISONS**DEBORAH COX**

Director of Legislative Affairs
National Association of Counties,
District of Columbia

HADI SEDIGH

Associate Legislative Director
National Association of Counties,
District of Columbia

UPCOMING EVENTS



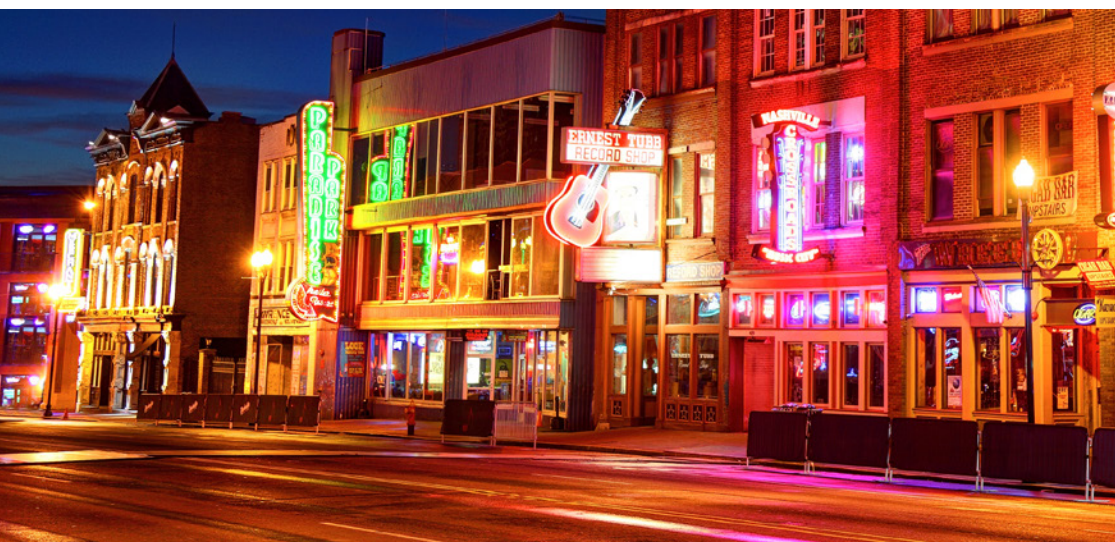
2017 POVERTY SUMMIT AND NACo FALL BOARD OF DIRECTORS MEETING

December 7-9, 2017
Worthington Renaissance
Tarrant County, Texas



NACo LEGISLATIVE CONFERENCE

March 3-7, 2018
Washington Hilton Hotel
Washington, D.C.



NACo ANNUAL CONFERENCE AND EXPOSITION

July 13-16, 2018
Gaylord Opryland
Nashville/Davidson County, Tenn.

SPONSORS

aetna®



Altria

amazon



ch2m.

COMCAST
NBCUNIVERSAL



IBM®



Netsmart
Technologies
Connecting Health and Human Services

PARSONS

PayPal

qualtrics.

RICOH
imagine. change.

The Public | Group®
Helping governments go green one click at a time.

UnitedHealthcare®

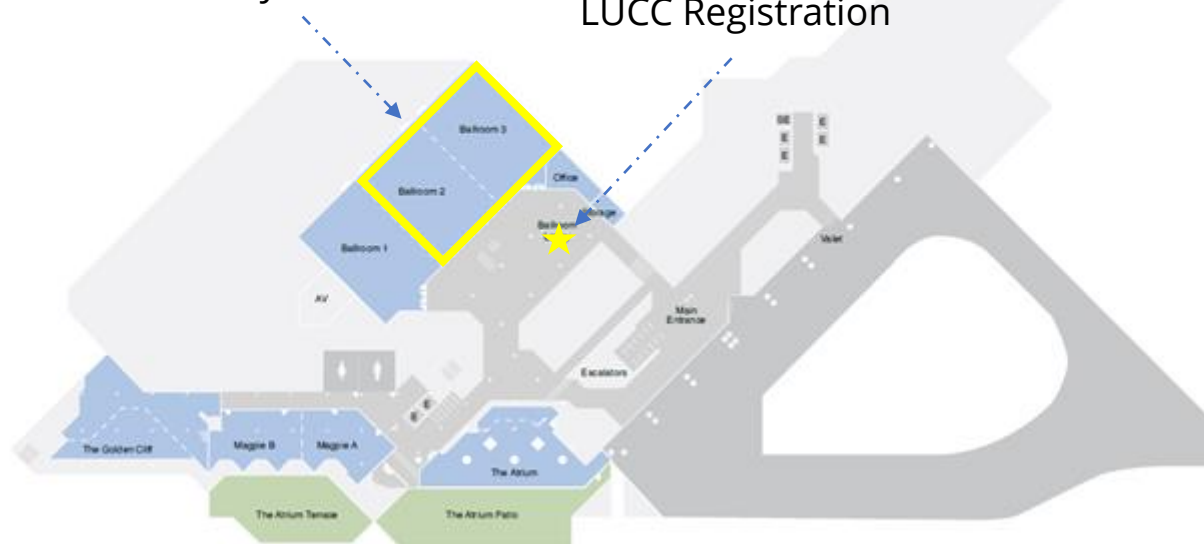
verizon✓

VISA

The Cliff Lodge Lower Level 1

LUCC Plenary Sessions

LUCC Registration



The Cliff Lodge Lobby Level

LUCC Breakout Sessions



Snowbird Restaurants

Breakfast

The Atrium

Gourmet coffees and pastries, an espresso bar and breakfast buffet. Sunday brunch on the patio during the summer. Open year-round.

The Cliff Lodge, Level B

The Forklift

American café cuisine located across the deck from the Tram. Open year-round.

Snowbird Center, Level 3

Baked & Brewed

Baked goods, sweets, gourmet coffee, espresso drinks and treats. Open year-round.

Snowbird Center, Level 2

General Gritts

A grocery store and take-out deli counter. Open year-round.

Snowbird Center, Level 1

The Aerie

A breakfast buffet with spectacular mountain views. Open winter only.

The Cliff Lodge, Level 10

Creekside Café

Specialty coffees, baked goods and more located at the base of Gad Valley. Open winter only.

Creekside Lodge

Lunch

The Atrium

Stop in slopeside for sandwiches and soups. Open winter only.

The Cliff Lodge, Level B

El Chanate Restaurant

Authentic Mexican fare and popular American favorites. Open summer only.

The Cliff Lodge, Level A

The Forklift

American café cuisine, beer, wine, cocktails and après-ski fare. Open year-round.

Snowbird Center, Level 3

General Gritts

A grocery store, take-out deli counter and liquor store. Open year-round.

Snowbird Center, Level 1

Tram Car Pizza

Handmade pizza, garlic cheese bread, hot sandwiches and drinks. Delivery is available. Open year-round.

Snowbird Center, Level 2

Birdfeeder

Sandwiches, burgers, cold beer and drinks on the Plaza Deck. Open summer weekends and daily during the winter season.

Snowbird Center, Level 3

Superior Snacks

Sandwiches, snacks, pizza and draft beer by the pool and hot tub. Open year-round.

The Cliff Lodge, Level 3

Creekside Café & Grill

Specialty coffees, baked goods, hot sandwiches, burgers, beer and more located at the base of Gad Valley. Open winter only.

Creekside Lodge

Mid-Gad Restaurant

Hamburgers, sandwiches, salads, snacks, homemade soups and chili. Open winter only.

Top of Mid-Gad Chairlift

Rendezvous

An extensive salad bar, create-your-own pasta bar, burgers, home-made soups and more. Open winter only.

Snowbird Center, Level 2

Seven Summits

A gourmet lunch buffet and après-ski overlooking Little Cottonwood Creek. Open winter only.

Snowbird Center, Level 2

Dinner

The Aerie

A modern-American gastropub complemented by an award-winning wine list and spectacular mountain vistas. Open year-round.

The Cliff Lodge, Level 10

El Chanate Restaurant

Authentic Mexican fare, American favorites, beer, wine and an award-winning tequila menu. Open year-round.

The Cliff Lodge, Level A

Steak Pit

A Snowbird icon. Prime steaks and seafood, an extensive wine list, beer and liquor. Open year-round.

Snowbird Center, Level 1

Tram Car Pizza

Handmade pizza, garlic cheese bread, hot sandwiches and drinks. Delivery is available. Open year-round.

Snowbird Center, Level 2

The Lodge Bistro

French-American cuisine, wine, draft beers and liquors. Open late November - April, late May - October.

The Lodge at Snowbird, Pool Level

Wildflower Restaurant

Italian fare and a broad selection of Italian wines, draft beers and liquors. Open late November - April, late May - October.

Iron Blossom, Level 3

Nightlife

The Aerie Lounge*

Cocktails, beer, wine, small plates, entrées and après-ski specials. Open year-round.

The Cliff Lodge, Level 10

El Chanate Cantina*

An extensive food and drink menu with one of Utah's largest tequila menus featuring over 35 selections. Open year-round.

The Cliff Lodge, Level A

The Lodge Bistro Lounge* The Lodge at Snowbird, Pool Level

Appetizers, salads, sandwiches and a full bar. Open late November - April, late May - October.

The Tram Club*

A sports bar. Beer, wine, cocktails, sports and billiards. Open year-round.

Snowbird Center, Level 1

Wildflower Lounge*

Homemade pizzas, light appetizers, billiards and more. Open winter only.

Iron Blossom, Level 3

*Lounge patrons must be at least 21 years of age.



#LUCC2017



[fb.com/NACoDC](https://www.facebook.com/NACoDC) | twitter.com/NACoTWEETS
[youtube.com/NACoVIDEO](https://www.youtube.com/NACoVIDEO) | [linkedin.com/in/NACoDC](https://www.linkedin.com/in/NACoDC)



660 NORTH CAPITAL STREET, NW | SUITE 400 | WASHINGTON, DC 20001 | 202.393.6226 | www.NACo.org