

Disrupt & innovate with Cognitive

Jeff Rogers

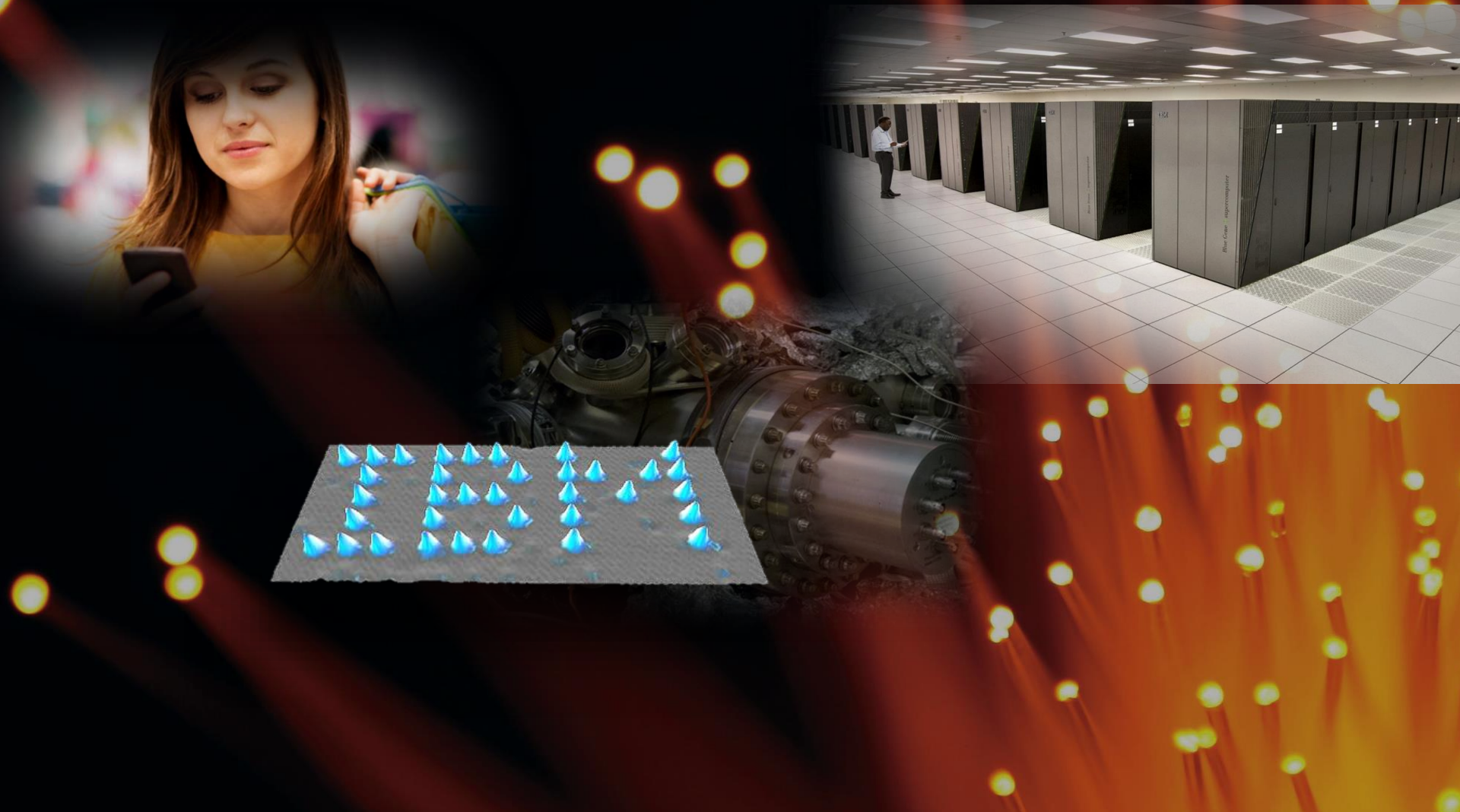
Public Sector Industry Solutions,
IBM Cognitive Solutions

 @jbrogersibm

Augmenting human capabilities



Augmenting human capabilities

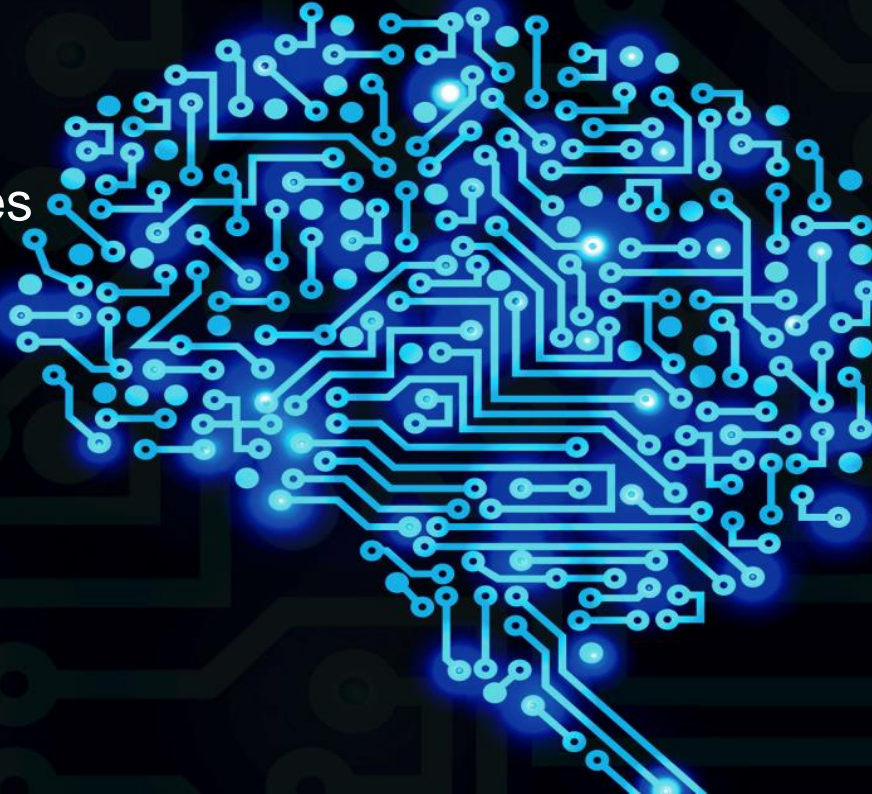


Augmenting human intelligence

Understand
multiple languages

Converse in
spoken dialogue

Comprehend
complex images



Interpret sensory
perceptions

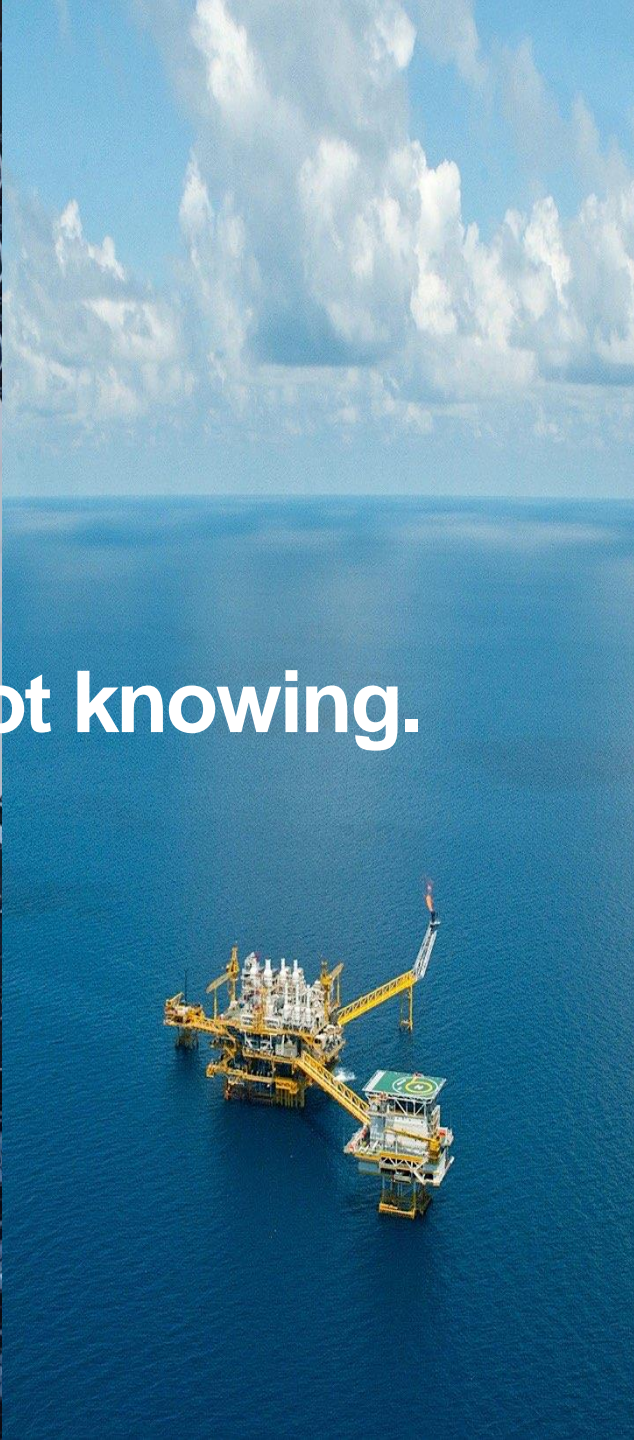
Develop domain
knowledge

Derive new insights



Overwhelming growth of unstructured data





The price of not knowing.

What is Cognitive?

Cognitive

understand, reason,
learn


Predictive

predict, decide, act

Descriptive

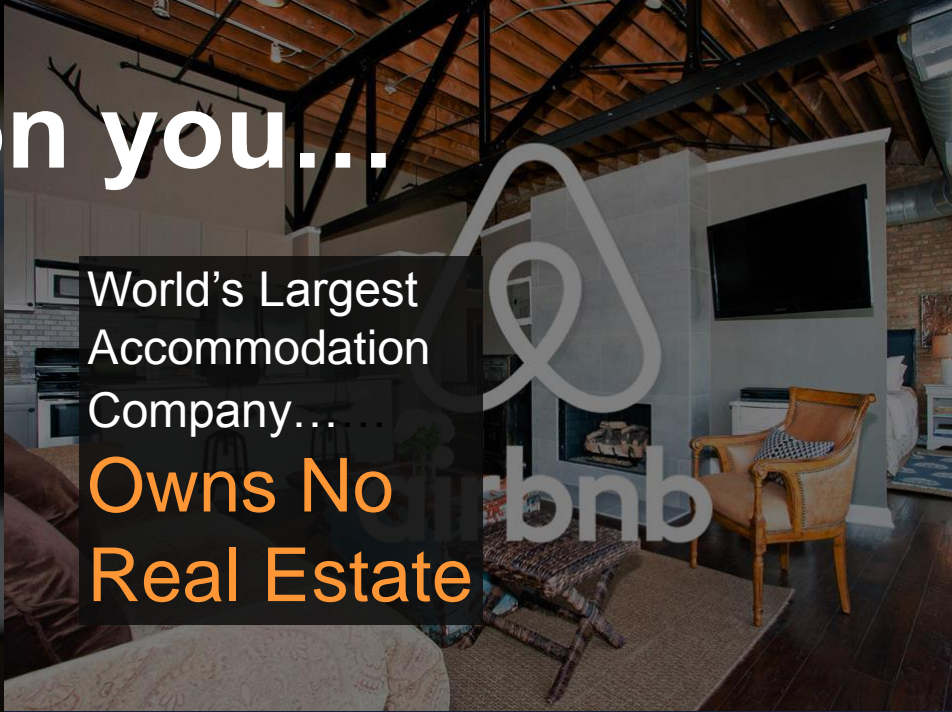
discover, report, analyze

Disruption is upon you...




World's Largest
Taxi Company...

**Owens No
Vehicles**



World's Largest
Accommodation
Company...

**Owens No
Real Estate**



World's Largest
Retailer...

**Carries No
Inventory**

World's Biggest
Media Company..

**Creates
No Content**



facebook

Oil & Gas

Modern facilities have more than **80,000** sensors in place, and a single reservoir will produce more than **15 PB** of data in its lifetime



Public Safety

New York City surveillance cameras and sensors generate **520 TB** of data per day, largely unstructured



Energy & Utilities

More than **680 million** smart meters will be installed globally by 2017 – producing more than **280 PB** of new data to be analyzed and acted upon



Healthcare

Each person will generate **1 million GB** of health-related data in their lifetime – equivalent to about **300 million** books





Human + Machine

Self-directed goals

Large-scale math

Common sense

Pattern discovery

Value judgment

Statistical reasoning

Learn at scale

The first person to post the correct answer was Gerson Carneiro, an internist in Rio de Janeiro. He said that although he hasn't seen many cases of this primarily pediatric disease in Brazil, he immediately

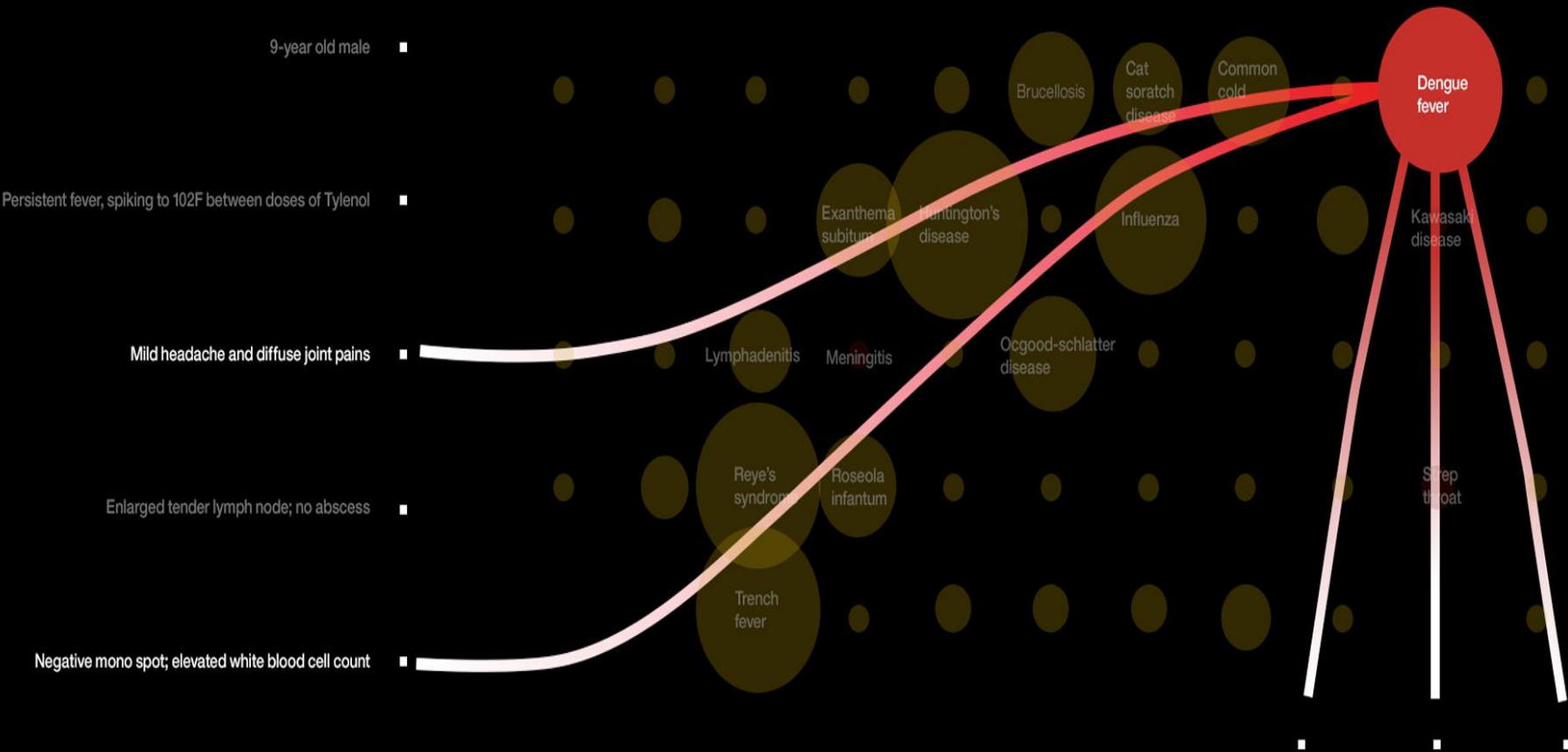
Kawasaki disease (KD) is a still somewhat mysterious inflammatory disorder seen almost exclusively in children. It was first described in 1967 by Tomisaku Kawasaki

KD is most common in boys, under age 5, of Asian or Pacific island descent.

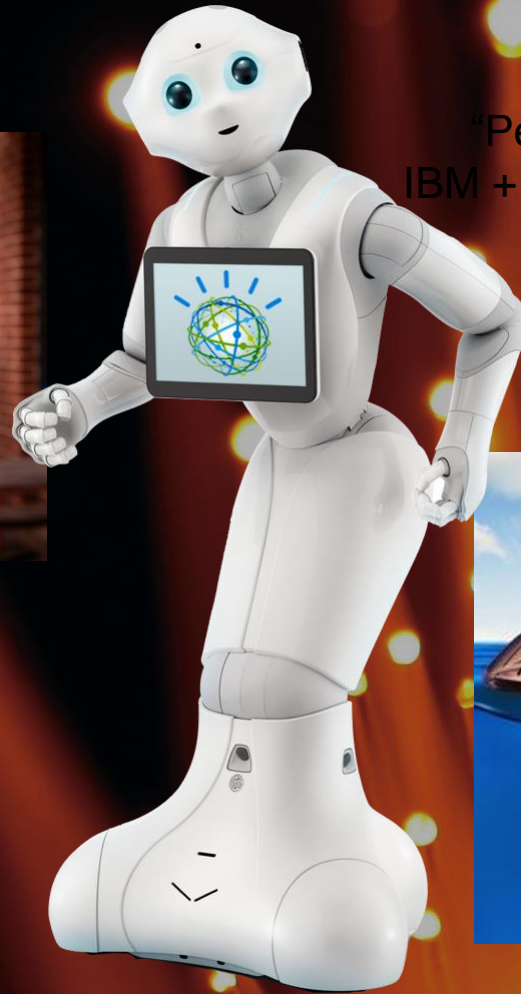
The cause of KD is still unknown, but the thinking these days is that it is an unusual immune response to a probable viral infection in children who have ...

Kawasaki disease (KD) is a still somewhat mysterious inflammatory disorder seen almost exclusively in children. It was first described in 1967 by Tomisaku Kawasaki

Reason with purpose



Cognitive IoT



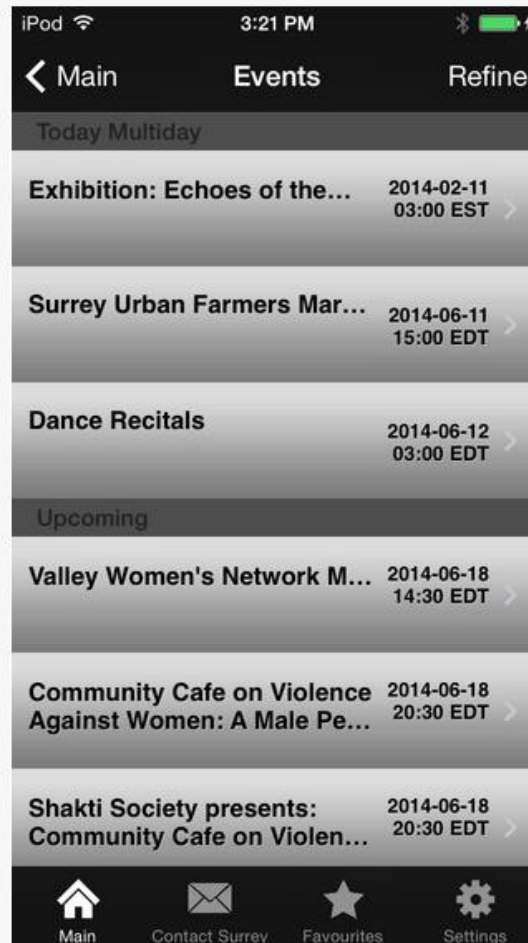
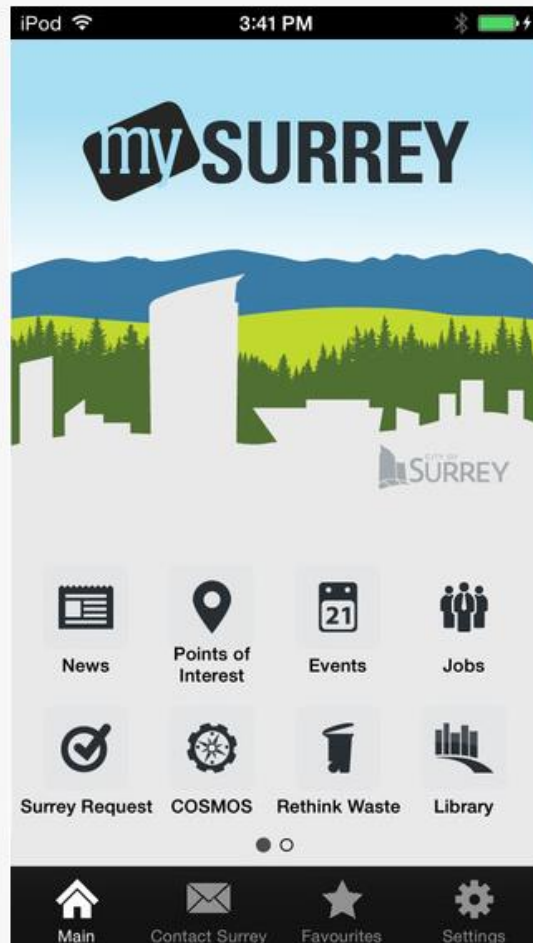
"Pepper"
IBM + SoftBank



My SURREY

powered by Watson

iPhone Screenshot



IDavatar – Nurse Sophie

powered by Watson



Government related solutions

powered by Watson

Security

- Threat Prediction and Prevention
- Cognitive Cyber Defense
- Law Enforcement
- Emergency Response

Sentiment

- Sentiment Analysis of open source data
- Personality Insights

Infrastructure

- Building Management
- Water Management
- Transportation Management
- Bridge Safety

IBM Acquisition of The Weather Company

IBM's “*moon shots*”

powered by Watson

Healthcare

Watson Health

Watson for Oncology

Watson Clinical Trial Matching

Apple HealthKit

Medtronic Diabetes Monitoring

Under Armour Digital Fitness

Education

Student Recruitment and Retention

Fundraising Campaigns

Personalized Learning

Advantages of Cognitive



Baylor
College of
Medicine

Intelligent
exploration
and discovery.



GO MOMENT

Deeper
human
engagement.



Bumrungrad
International

Elevated
expertise.



Cognitive
processes &
operations.



elemental path.

Cognitive
products
and services.

Becoming a Cognitive Government

1. Get educated

<http://www.ibm.com/cognitive/outthink/>

2. Select one area where cognitive might apply

3. Try it out in the cognitive cloud

<https://www.ibm.com/smarterplanet/us/en/ibmwatson/developercloud/>

Start your journey

Jeff Rogers, jbrogers@us.ibm.com

