



Local Implementation Grant
Chesapeake and Atlantic Coastal Bays
2010 Trust Fund

Local Implementation Grant

Chesapeake and Atlantic Coastal Bays

2010 Trust Fund



Quick Facts

Who can apply: Local Governments & Non-Governmental Organizations

What Should You Apply For: implementation of existing local watershed restoration plans that address non-point source reductions

Timeframe: Proposals are due August 29, 2008.

Projects can span 1-3 years

What Can You Request: \$600,000 - \$5 Million

Local Implementation Grant

Chesapeake and Atlantic Coastal Bays

2010 Trust Fund

Background

- Bill passed in Nov. 2007 Special Session (SB 213)
 - For FY2009- \$25M allocated
 - For FY2010 and beyond- \$50M
- Where does the \$ come from?
 - State Budget
 - Motor fuel tax revenue
 - Rental car tax revenue
- Who's in charge of the \$\$?
 - BayStat with recommendations from the Scientific Advisory Panel and State Agencies

Local Implementation Grant

Chesapeake and Atlantic Coastal Bays

2010 Trust Fund

Timeline

- **Proposals Due: August 29, 2008**
- **Review: through October 23, 2008**
- **Awards Announced: late October, 2008**

Next Steps: Once awards announced, state agencies will work with recipients to develop a workplan, detailed budget, and draw up reimbursable contracts

Local Implementation Grant

Chesapeake and Atlantic Coastal Bays

2010 Trust Fund

Guidelines

- Small Watershed
- Leveraging of funds
 - Trust Fund Programs
 - Local Capital Improvement
 - Transportation Enhancement (TEP)
 - Chesapeake Bay Trust
 - Other
- Partnerships
- Project Scale

Local Implementation Grant

Chesapeake and Atlantic Coastal Bays

2010 Trust Fund

Leveraging

- Other Trust Fund \$\$
 - Existing programs to target in selected watersheds
 - Contact MDA & MDE
- Chesapeake Bay Trust
 - Targeted Watershed Grant Program
 - Other grant programs
- Other
 - Local Capital Budgets
 - Non-Monetary- policies, evaluation strategies...etc.

Local Implementation Grant

Chesapeake and Atlantic Coastal Bays

2010 Trust Fund

Criteria

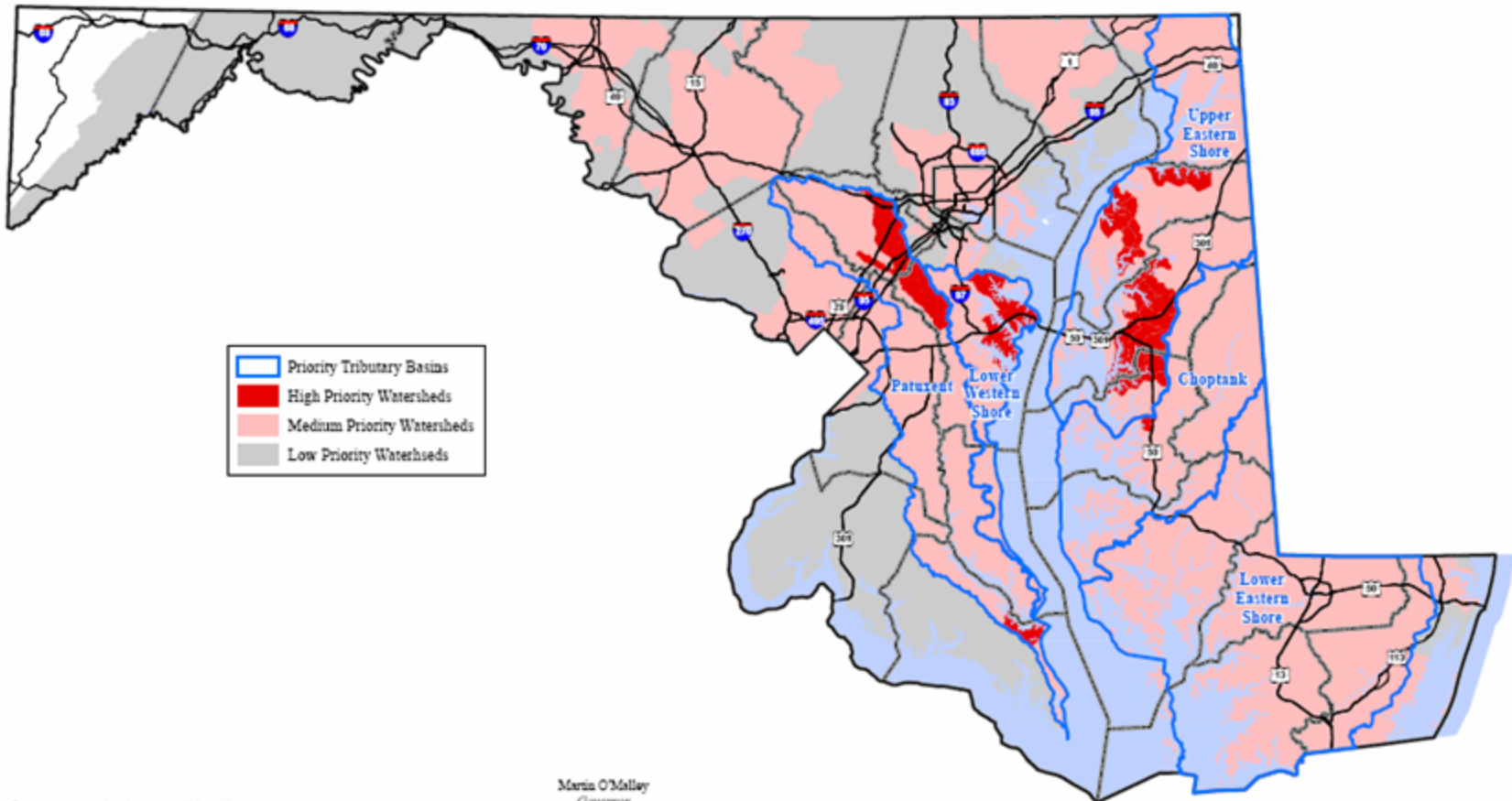
- Four Evaluation Criteria:
 - Scientific Feasibility
 - Implementation Readiness
 - Implementation Ability
 - Characteristics of the watershed
 - Size
 - Location

Local Implementation Grant

Chesapeake and Atlantic Coastal Bays
2010 Trust Fund

Priority Areas

Chesapeake & Atlantic Coastal Bays Trust Fund:
FY09-10 Priority Areas



Maryland Department of Natural Resources
Natural Resources Information Services
580 Taylor Ave. E-2 Annapolis, MD 21401
410-260-8753 or 1-877-420-4DNR 48753
dnr.maryland.gov
ENR May 2008

Martin O'Malley
Governor
Anthony G. Brown
Lt. Governor
John R. Griffin
Secretary

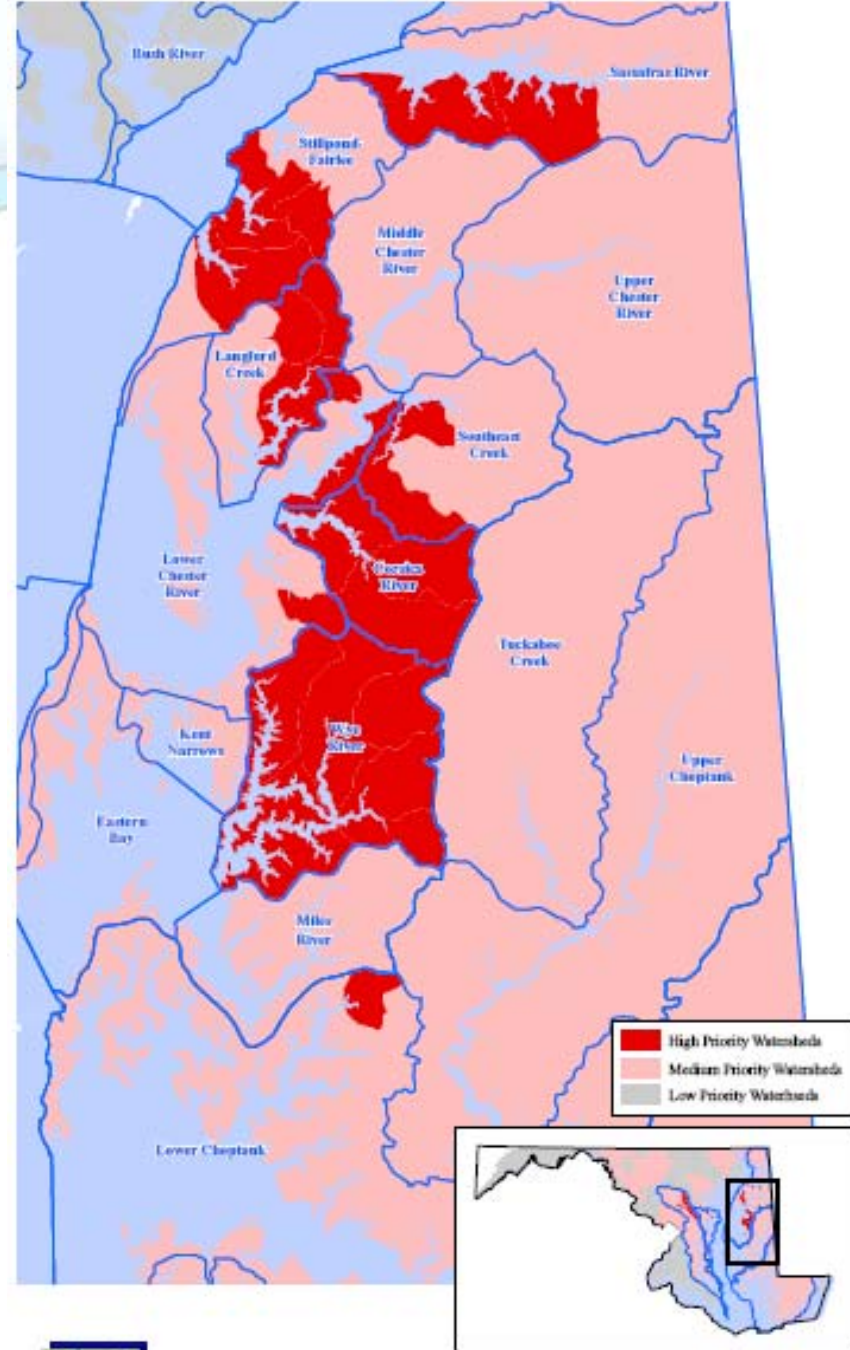
0 5 10 20 30 40
Miles



Local Implementation Grant

Chesapeake and Atlantic Coastal Bays
2010 Trust Fund

Enlarged View of the Eastern Shore



Mark O'Malley
Governor
Anthony G. Brown
Lt. Governor



Local Implementation Grant

Chesapeake and Atlantic Coastal Bays

2010 Trust Fund

Priority Areas

Top 5 Percent in 5 Basins ([13] 8-digit watersheds / [45] 12-digit watersheds)

MDE8DIGT	Name	# of 12-digit subwatersheds
2130507	Corsica River	3
2130506	Langford Creek	3
2131105	Little Patuxent River	12
2130505	Lower Chester River	3
2130403	Lower Choptank	1
2131001	Magothy River	2
2131101	Patuxent River lower	3
2130610	Sassafras River	2
2131002	Severn River	2
2131003	South River	3
2130508	Southeast Creek	2
2130611	Stillpond-Fairlee	3
2130503	Wye River	6

Local Implementation Grant

Chesapeake and Atlantic Coastal Bays

2010 Trust Fund

Anticipated Applications

Applicant	Partner	Watershed	Priority
Anne Arundel Co.		Magothy River	High
Baltimore City	GFWA JFWA HRWA	Gwynns Falls Jones Falls Herring Run	Medium
Baltimore Co.			
Chester River Association	Washington College/ Kent County	Middle Chester	Med/High
City of Annapolis		Spa, College, Weems & Back Creeks	High
Coastal Bays Program	Worcester Co.		Med/Low
Frederick Co.	Potomac Conservancy	Lower Monocacy	Medium
Harford Co.	CBNERR	Wheel Creek	Medium
Howard Co./ Columbia Assoc.	General Growth Properties (GGP)	Little Patuxent	High
Howard Co. Soil Conservation District/ Montgomery Co SCD		Patuxent Reservoir	Medium

Local Implementation Grant

Chesapeake and Atlantic Coastal Bays

2010 Trust Fund

Anticipated Applications

Montgomery/Prince George Cos.		Sligo Creek	Medium
Queen Anne's Co.		Corsica River	High
Queen Anne's Co.		Kerwin Creek	High
Severn RiverKeeper	Spa Creek Conservancy	Severn River	High
South River Federation	Center for Watershed Protection	South River	High
Talbot County	Town of Easton/Environmental Concern	Tred Avon	High

Local Implementation Grant

Chesapeake and Atlantic Coastal Bays

2010 Trust Fund



Questions?

Contact Jenn Raulin

MD DNR

410-260-8745

jraulin@dnr.state.md.us