

# Public-Private Partnerships and Business Incentives

---

Presented at

## National Association of Counties County Climate Change Protection Forum

September 20, 2007

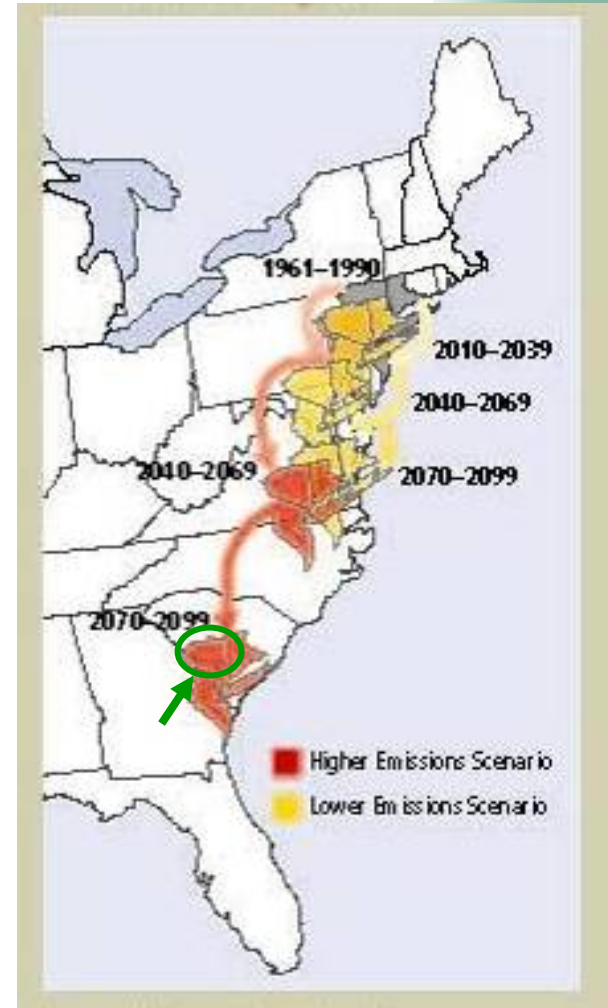
Presented by

Robert Funicello

Environmental Project Director  
Westchester County, New York

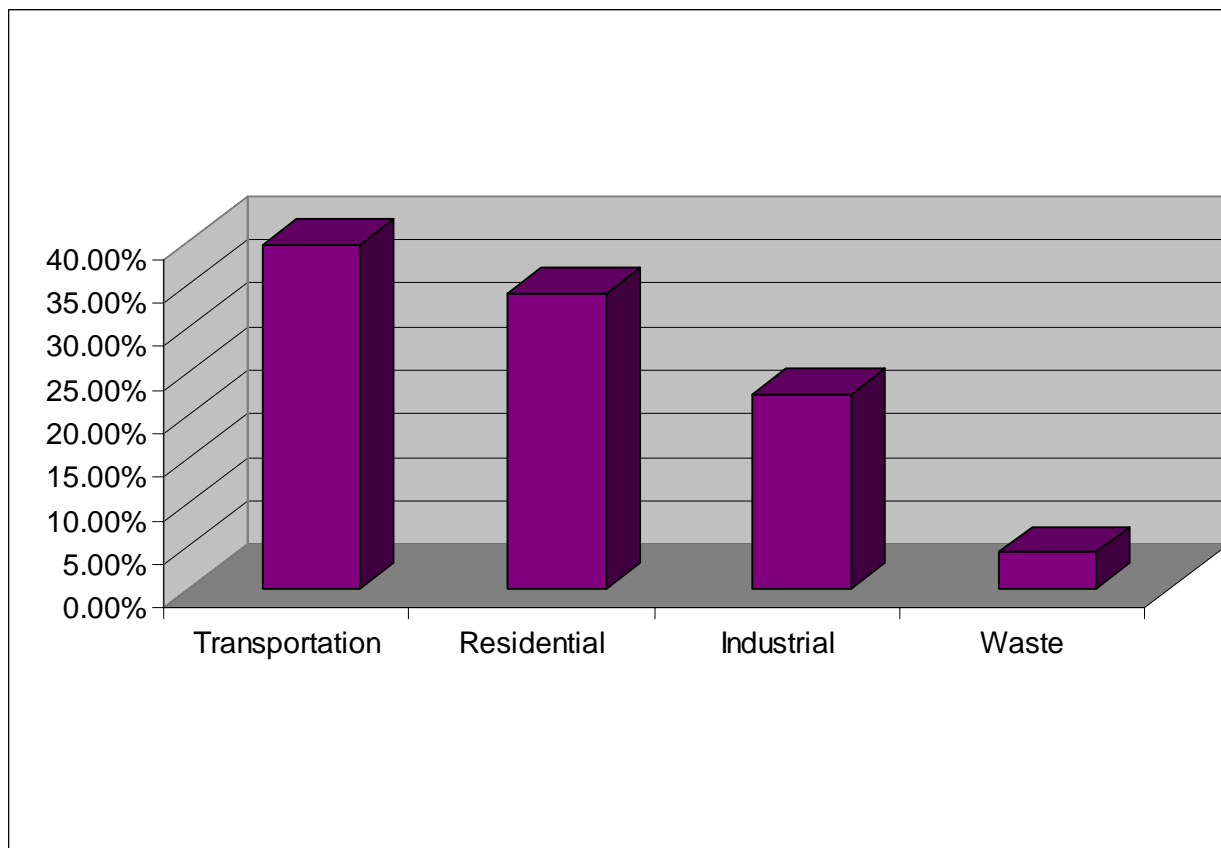
# Why a Westchester County Task Force?

- \* Climate change is real, ongoing, and results from our activities.
- \* What this means to Westchester:
  - ~3 ft. sea level rise
    - \* Population centers and infrastructure along shoreline at risk
    - \* Loss of shoreline/wetlands
  - Severe storms and floods (more 100-yr storms)
    - \* Damage to homes, infrastructure, roads, utilities
    - \* Property loss
  - Rising temperatures
    - \* Marine impacts
  - Up to 40% decrease in agricultural yield
  - Ecosystem disruption
    - \* Sugar maples



# Westchester County GHG Emissions Inventory

**Community Greenhouse Gas Emissions in 2005 Summary Report**  
**Total Emissions: 13,775,000 tons of CO<sub>2</sub>**



# ICLEI Cities for Climate Protection Campaign

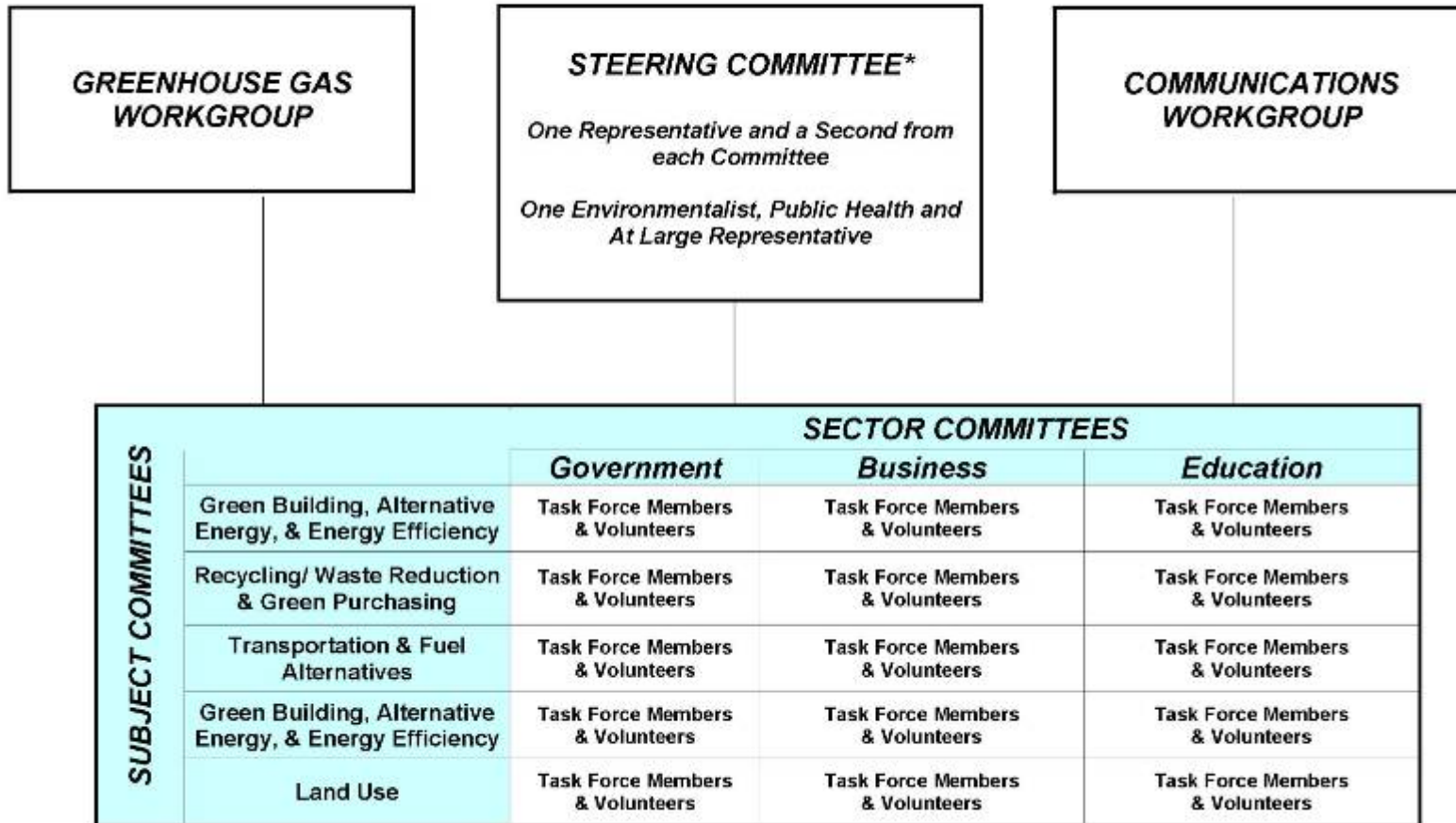
As a member of the ICLEI Cities for Climate Protection Campaign, the County requested the Task Force to:

- Update a 2001 inventory of total greenhouse gas produced in Westchester.
- Recommend a greenhouse gas emissions reduction goal and a strategy to achieve the goal.
- Recommend actions to achieve the goal specific to each sector, government, education, business, and general public as well as to individual households.
- Recommend a sustainable development program for Westchester to reduce energy and water consumption, improve air and water quality, reduce solid waste and the use of toxic materials and promote land use compatible with these priorities.
- Develop a plan to monitor progress.

<http://www.iclei.org/co2/>

# Structure

## Climate Protection: Global Warming Task Force Organizational Chart



# Westchester County Global Warming Task Force Timetable of Activities

2007		
January 6	Organizational Meeting of Task Force	Steering Committee Meetings
January – July	Subject Committee Meetings	
January – August	Sector Committee Meetings	
August – September	Committee Work Products Integrated	
October - December	Action Plan Finalized	
2008		
January 9	Action Plan Presented to Task Force	Steering Committee Meetings
January 30	Action Plan Launched Countrywide	

# Lessons Learned

- ★ County Executive established a broad based consortium/partnership within the community.
- ★ As a result “whole community benefits” are derived from the structure and process of the GWTF.
- ★ Westchester’s multi-stakeholder process could be adopted by *any* community, with *any* demographic.

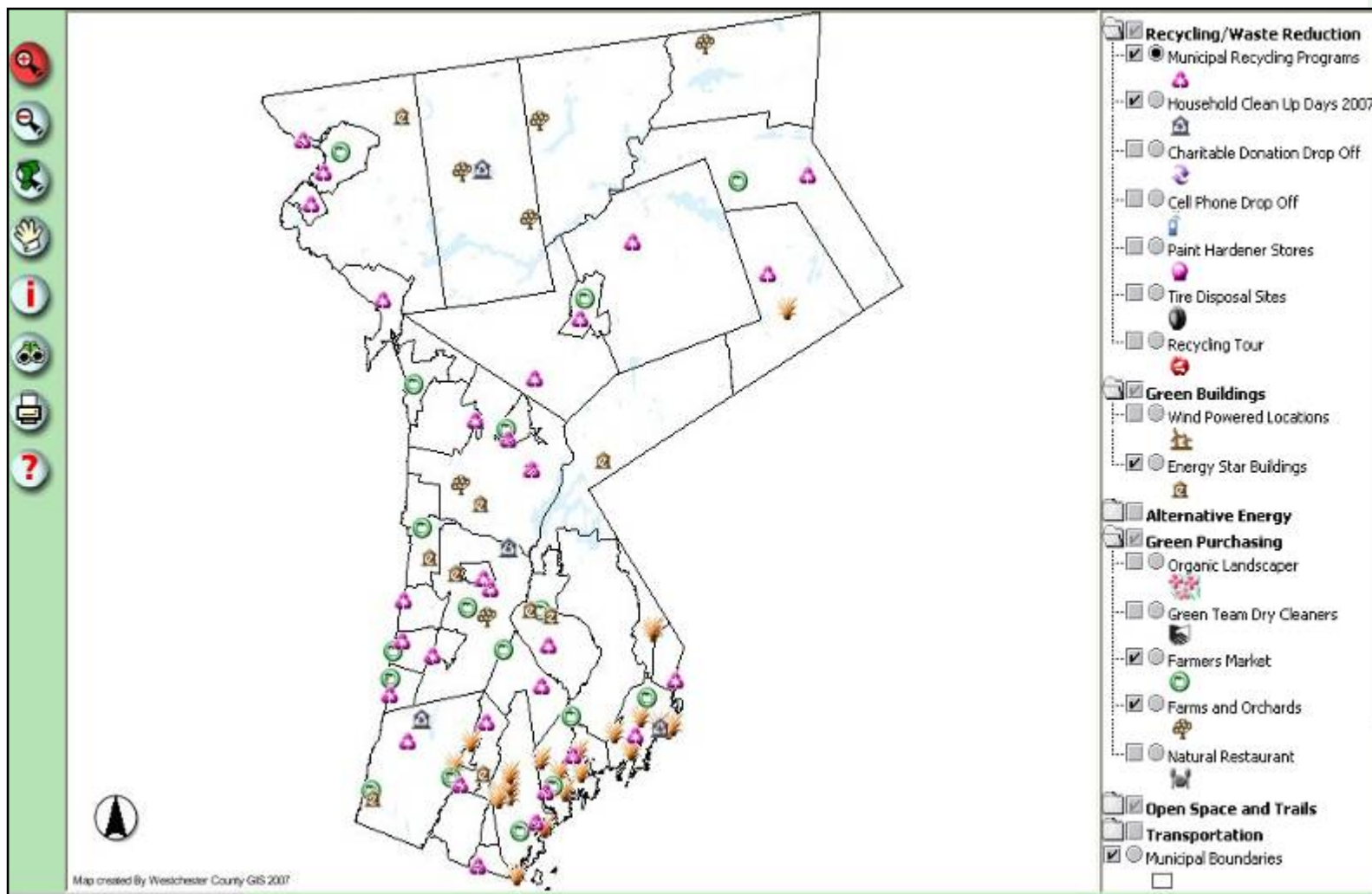
# Next Steps

- ★ Westchester's County Executive and Westchester's Business Sector were each examining San Francisco's "Green Business" model.

<http://www2.sfenvironment.org/greenbiz/how.htm>

- ★ Through the WCGWTF, they have come together to collaborate in fitting the model to Westchester.
- ★ Westchester's Green Business program will be proposed as one of the implementation tools for the for the Business Sector climate protection action plan.

# Westchester County Green Map



# Westchester County Green Map (Zoom)

The screenshot shows the Westchester County Green Map application. The map displays various green building and recycling locations in White Plains. A pop-up window titled "Charitable Donation Drop Off" provides details for a specific location.

Field	Value
#	1
NAME	Coachman Family Center
ADDRESS	123 E Post Rd
CITY	White Plains
ZIP	10601
PHONE	940-1000
ACCEPTS	Clothing, Furniture
WEBSITE	<a href="http://www.westchestergov.com/envfaciV/pdf/files/QuickRec.pdf">http://www.westchestergov.com/envfaciV/pdf/files/QuickRec.pdf</a>
WEBSITE2	<a href="http://www.westchestergov.com/envfaciV">http://www.westchestergov.com/envfaciV</a>

The map interface includes a "DATA LAYERS" panel on the right with the following options:

- Recycling/Waste Reduction
  - Municipal Recycling Programs
  - Household Clean Up Days 2007
  - Charitable Donation Drop Off
  - Cell Phone Drop Off
  - Paint Hardener Stores
  - Tire Disposal Sites
  - Recycling Tour
- Green Buildings
- Alternative Energy
- Green Purchasing
- Open Space and Trails
- Transportation
  - Municipal Boundaries
  - Major Lakes
- Aerial Photos

Buttons for "Refresh Map" and "Auto Refresh" are also present.

# Conclusion

- ★ Westchester's climate protection and sustainable development program seeks to use existing technology and resources to:
  - cut criteria air pollutants
  - reduce greenhouse gas emissions
  - save money
  - improve energy security
  - promote sustainable development
- ★ Using a broad based community partnership including representatives from the business, education and local government sectors, and private citizens, has been invaluable in developing the county's action plan and makes it more likely to succeed.